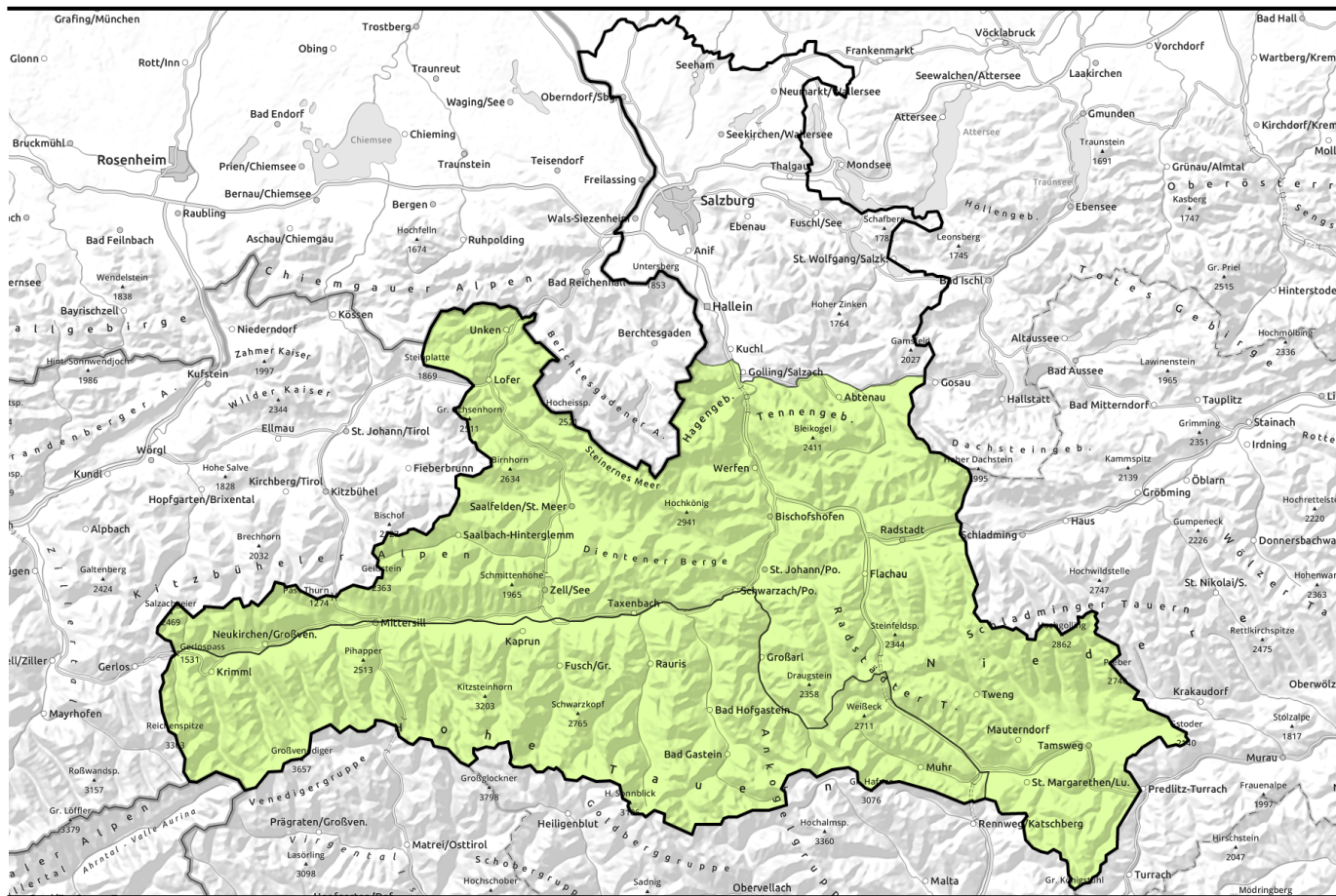


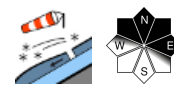
# Avalanche report for Saturday, 07.01.2023



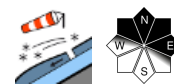
## Low avalanche danger over widespread areas



Großenedigergruppe Alpenhauptkamm, Glocknergruppe Alpenhauptkamm, Goldberggruppe Alpenhauptkamm, Ankogelgruppe, Muhr, Großenedigergruppe Nord, Glocknergruppe Nord, Goldberggruppe Nord



Chiemgauer Alpen, Heutal, Reiteralpe, Loferer und Leoganger Steinberge, Steinernes Meer, Hochkönig, Hagengebirge, Göllstock, Tennengebirge, Gosaukamm, Niedere Tauern Süd, Oberpinzgauer Grasberge, Kitzbüheler Alpen, Glemmtal, Dientner Grasberge, Pongauer Grasberge, Nockberge, Niedere Tauern Nord, Niedere Tauern Alpenhauptkamm



### Avalanche problems



### Danger ratings

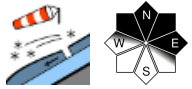


### Expositions

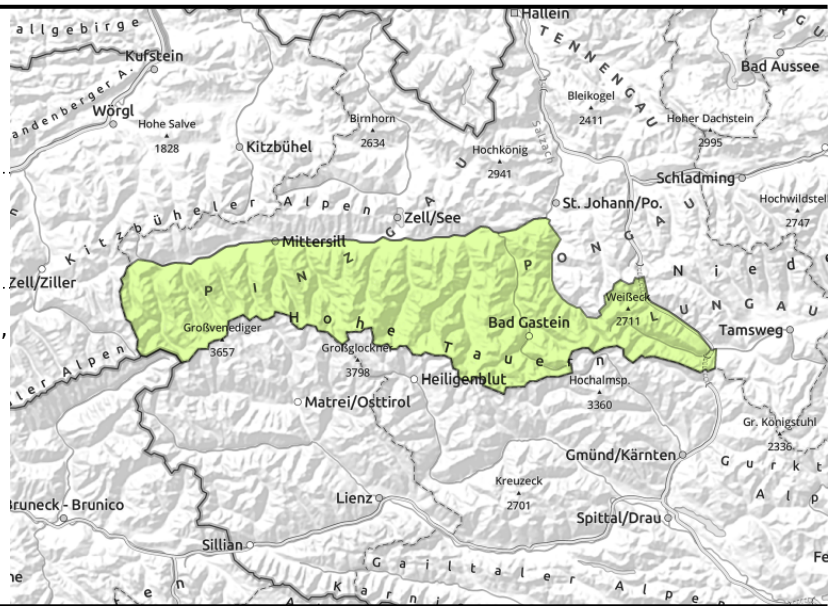


# Avalanche report for **Saturday, 07.01.2023**

**Großvenedigergruppe Alpenhauptkamm, Glocknergruppe Alpenhauptkamm, Goldberggruppe Alpenhauptkamm, Ankogelgruppe, Muhr, Großvenedigergruppe Nord, Glocknergruppe Nord, Goldberggruppe Nord**



isolated, in gullies, steep bowls, above about 2200 m



## Very few avalanche prone locations

Avalanche danger is LOW. As a result of strong-to-stormy westerly winds, small trigger-sensitive snowdrift accumulations have been generated above 2200 m in gullies and bowls. Caution is urged particularly in terrain where it is possible to take a fall.

Weak layers in the old snow can be triggered in isolated cases, i.e. superficially release a freshly formed slab which then fractures down to a more deeply embedded layer. This applies particularly to wind-protected zones, areas at the foot of rock walls, and wind-protected bowls in northern aspects (NE-N-NW) above 2500 m. Avalanches which release rarely attain medium size.

## Snowpack structure

The snowpack at high altitudes shows pronounced effects of wind. Melt-freeze crusts and loose snow alternate over the smallest of spaces. Between shallow snowdrifts and melt-freeze crusts (on sunny slopes) there are soft layers embedded which tend to fracture only seldom. In addition, the required slab atop of it is usually lacking. Larger cohesive snowpack surfaces are limited to leeward bowls. Above 2500 m the layering is unfavourable due to a weak fundament with soft, faceted crystals and depth hoar. This applies particularly to wind-protected terrain. Snow depths are below average. Below 1800 m there is hardly any snow on the ground.

## Weather

On Saturday, frequent sunshine in the mountains, and good visibility. In high altitude Tauern terrain a brisk SW wind will be blowing. It will be relatively mild: at 2000 m, +5 degrees; at 3000 m: -1 degree.

## Outlook

No significant change. Temperatures will recede somewhat on Sunday.

### Avalanche problems



### Danger ratings

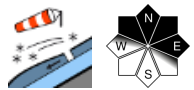
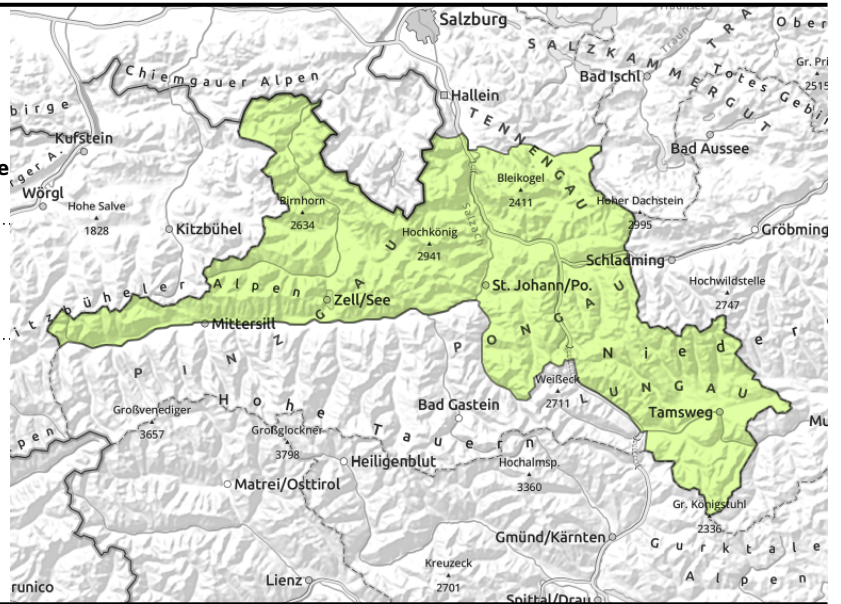


### Expositions



# Avalanche report for **Saturday, 07.01.2023**

**Chiemgauer Alpen, Heutal, Reiteralpe, Loferer und Leoganger Steinberge, Steinernes Meer, Hochkönig, Hagengebirge, Göllstock, Tennengebirge, Gosaukamm, Niedere Tauern Süd, Oberpinzgauer Grasberge, Kitzbüheler Alpen, Glemmtal, Dientner Grasberge, Pongauer Grasberge, Nockberge, Niedere Tauern Nord, Niedere Tauern Alpenhauptkamm**



distant from ridgelines, in gullies, steep bowls, above 2000 m

## Small snowdrift patches at high altitudes, esp. in Northern Alps

Avalanche danger is LOW. As a result of strong-to-stormy westerly winds, small trigger-sensitive snowdrift accumulations have been generated above 2200 m in gullies and bowls. Risks of taking a fall and suffering injuries outweigh those of being buried in snow masses.

### Snowpack structure

The snowpack shows pronounced effects of wind and higher temperatures, melt-freeze crusts of all types tend to dominate. On Thursday up to 10 cm of fresh snow was deposited (Northern Alps) atop wind-impacted surfaces. Fresh snowdrifts on Thursday were deposited on Thursday by strong-to-stormy westerly winds in gullies and bowls and behind abrupt discontinuities in the terrain, also distant from ridgelines. Snowdrifts are small but, particularly on shady slopes, prone to triggering in isolated cases. Weak layers more deeply embedded inside the snowpack are unlikely to trigger currently. Snow depths are highly varied. Below 1800 m there is very little snow on the ground. A gliding snowpack is no longer being observed.

### Weather

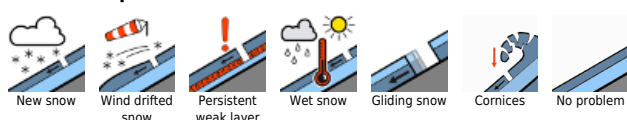
On Saturday, frequent sunshine in the mountains, and good visibility. In high altitude Tauern terrain a brisk SW wind will be blowing. It will be relatively mild: at 2000 m, +5 degrees; at 3000 m: -1 degree.

### Outlook

No significant change. Temperatures will recede somewhat on Sunday.

Translated by Jeffrey McCabe, [www.creativtrans.com](http://www.creativtrans.com)

#### Avalanche problems



#### Danger ratings



#### Expositions

