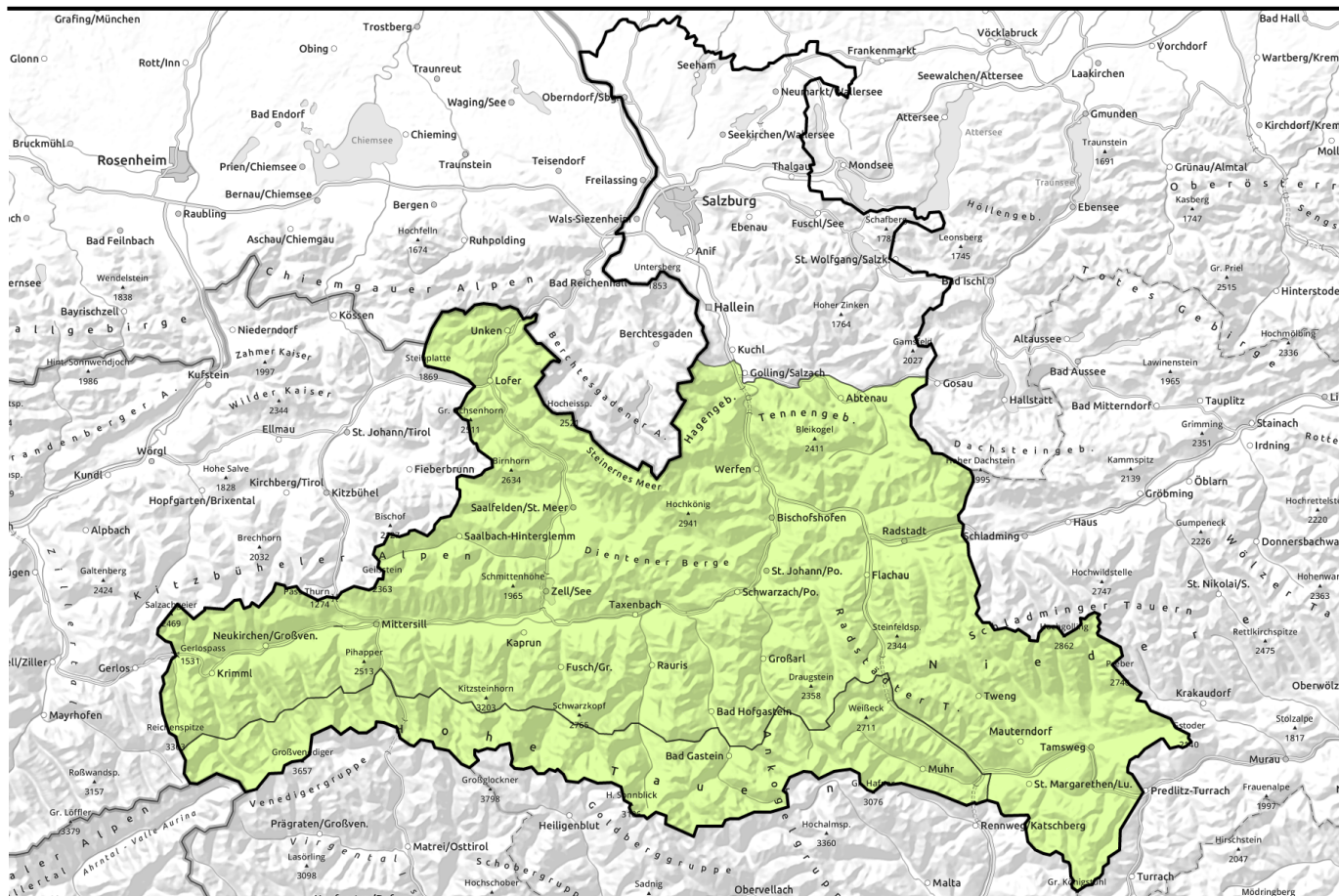


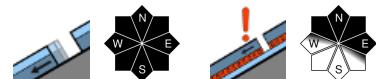
Avalanche report for Wednesday, 04.01.2023



Not much snow, lots of melt-freeze crusts



Großvenedigergruppe Alpenhauptkamm, Glocknergruppe Alpenhauptkamm, Goldberggruppe Alpenhauptkamm, Ankogelgruppe, Muhr



Oberpinzgauer Grasberge, Kitzbüheler Alpen, Glemmtal, Dientner Grasberge, Pongauer Grasberge, Niedere Tauern Nord, Niedere Tauern Alpenhauptkamm, Niedere Tauern Süd, Nockberge, Chiemgauer Alpen, Heutal, Reiteralpe, Loferer und Leoganger Steinberge, Steinernes Meer, Hochkönig, Hagengebirge, Göllstock, Tennengebirge, Gosaukamm, Goldberggruppe Nord, Glocknergruppe Nord, Großvenedigergruppe Nord



Avalanche problems



Danger ratings



Expositions



Avalanche report for **Wednesday, 04.01.2023**

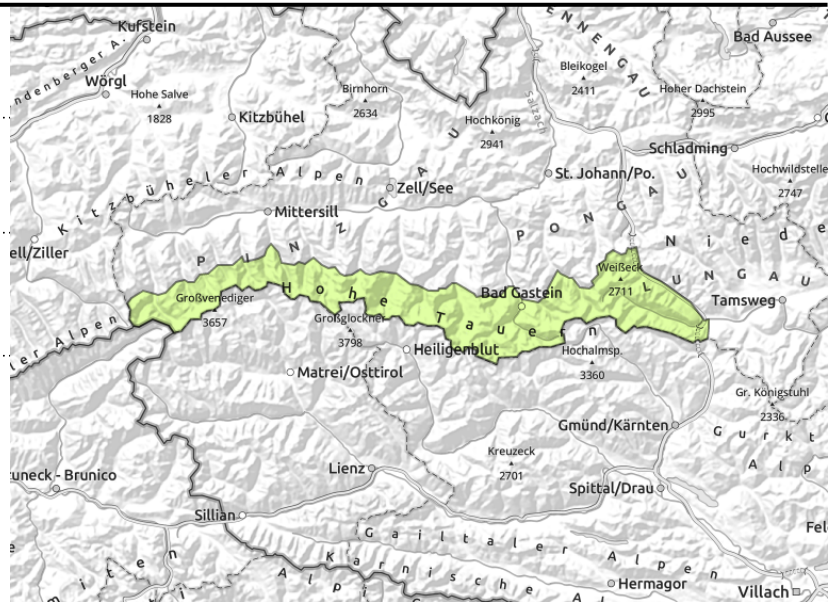
Großvenedigergruppe Alpenhauptkamm, Glocknergruppe Alpenhauptkamm, Goldberggruppe Alpenhauptkamm, Ankogelgruppe, Muhr



from smooth steep slopes which have not yet discharged



old snowpack near the ground is very weak in small areas



Isolated glide-snow avalanches, small persistent weak layer

Avalanche danger above 2500 m is LOW.

Weak layers inside the old snowpack can on shady slopes above approximately 2500 m still can be easily triggered in very isolated cases, particularly on wind-protected slopes at the foot of rock walls or behind abrupt discontinuities in the terrain. Avalanches can attain medium size.

From smooth slopes which have not yet discharged (grass-covered, rock plates) small glide-snow avalanches can release in isolated cases.

Snowpack structure

On north-facing (NW-N-NE) slopes above 2500 m the snowpack layering is unfavourable due to a sequence of melt-freeze crusts and faceted crystals in the fundament, or else depth hoar. This applies particularly to wind-protected slopes. Overall the snowpack has settled well and is quite compact. Melt-freeze crusts dominate. Snow depths are highly varied. Below 1800 m there is little snow on the ground.

Weather

Above the early-morning fogbanks, good visibility and sunshine on Wednesday until afternoon. In the afternoon, clouds will move in from the west, dampen the sun. Westerly winds will be light to moderate, sometimes brisk towards evening. At 2000 m: +1 degree; at 3000 m: -5 degrees.

On Thursday, stormy westerly winds (reaching speeds of 80 km/hr), heavy clouds and reduced visibility. Intermittent rainfall. Snowfall level above 1800 m. At 2000 m: 0 degrees; at 3000 m; -6 degrees.

Outlook

Only a few centimetres of fresh snow (5 cm at high altitudes) will generate at most shallow snowdrifts. Light rise in risks on Thursday due to freshly generated snowdrifts.

Avalanche problems



New snow



Wind drifted snow



Persistent weak layer



Wet snow



Gliding snow



Cornices



No problem

Danger ratings



1

low



2

moderate



3

considerable



4

high



5

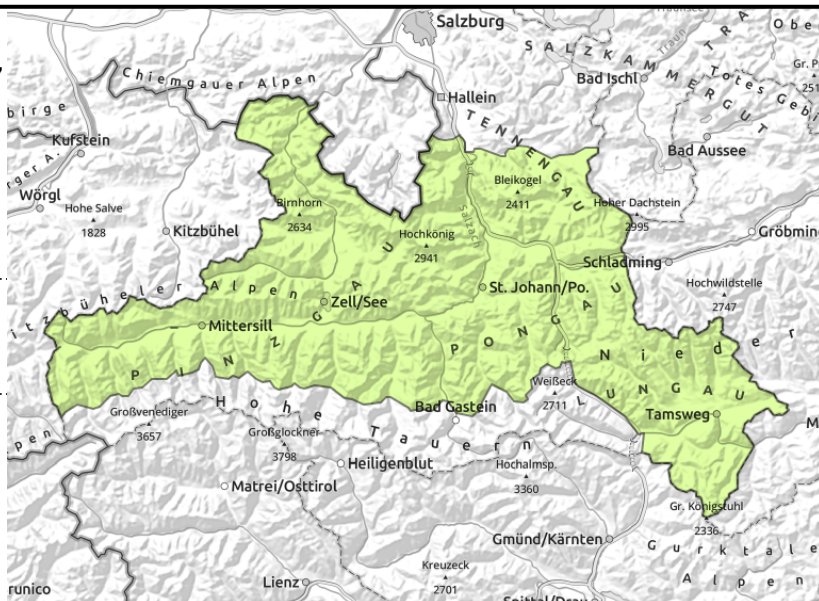
very high

Expositions



Avalanche report for **Wednesday, 04.01.2023**

Oberpinzgauer Grasberge, Kitzbüheler Alpen, Glemmtal, Dientner Grasberge, Pongauer Grasberge, Niedere Tauern Nord, Niedere Tauern Alpenhauptkamm, Niedere Tauern Süd, Nockberge, Chiemgauer Alpen, Heutal, Reiteralpe, Loferer und Leoganger Steinberge, Steinernes Meer, Hochkönig, Hagengebirge, Göllstock, Tennengebirge, Gosaukamm, Goldberggruppe Nord, Glocknergruppe Nord, Großvenedigergruppe Nord



from smooth steep slopes that have not yet discharged

Not much snow, only isolated danger zones

Avalanche danger is LOW. From steep smooth slopes which have not yet discharged (grassy slopes, rock plates) isolated small glide-snow avalanches can be released. The snowdrifts which were recently generated are unlikely to trigger as avalanches, most are mere patches. Caution where falls are possible. Snow depths are highly varied. Below 1800 m there is little snow on the ground.

Snowpack structure

The snowpack has settled and consolidated in the warm temperatures. Melt-freeze crusts of all types dominate. Weak layers more deeply embedded inside the snowpack are unlikely to trigger. More likely is that the snowpack will glide away as a whole over the smooth ground. Snow depths are highly varied. Below 1800 m there is hardly any snow on the ground.

Weather

Above the early-morning fogbanks, good visibility and sunshine on Wednesday until afternoon. In the afternoon, clouds will move in from the west, dampen the sun. Westerly winds will be light to moderate, sometimes brisk towards evening. At 2000 m: +1 degree; at 3000 m: -5 degrees. On Thursday, stormy westerly winds (reaching speeds of 80 km/hr), heavy clouds and reduced visibility. Intermittent rainfall. Snowfall level above 1800 m. At 2000 m: 0 degrees; at 3000 m; -6 degrees.

Outlook

Only a few centimetres of fresh snow (5 cm at high altitudes) will generate at most shallow snowdrifts. Light rise in risks on Thursday due to freshly generated snowdrifts.

Translated by Jeffrey McCabe, www.creativtrans.com

Avalanche problems



Danger ratings



Expositions

