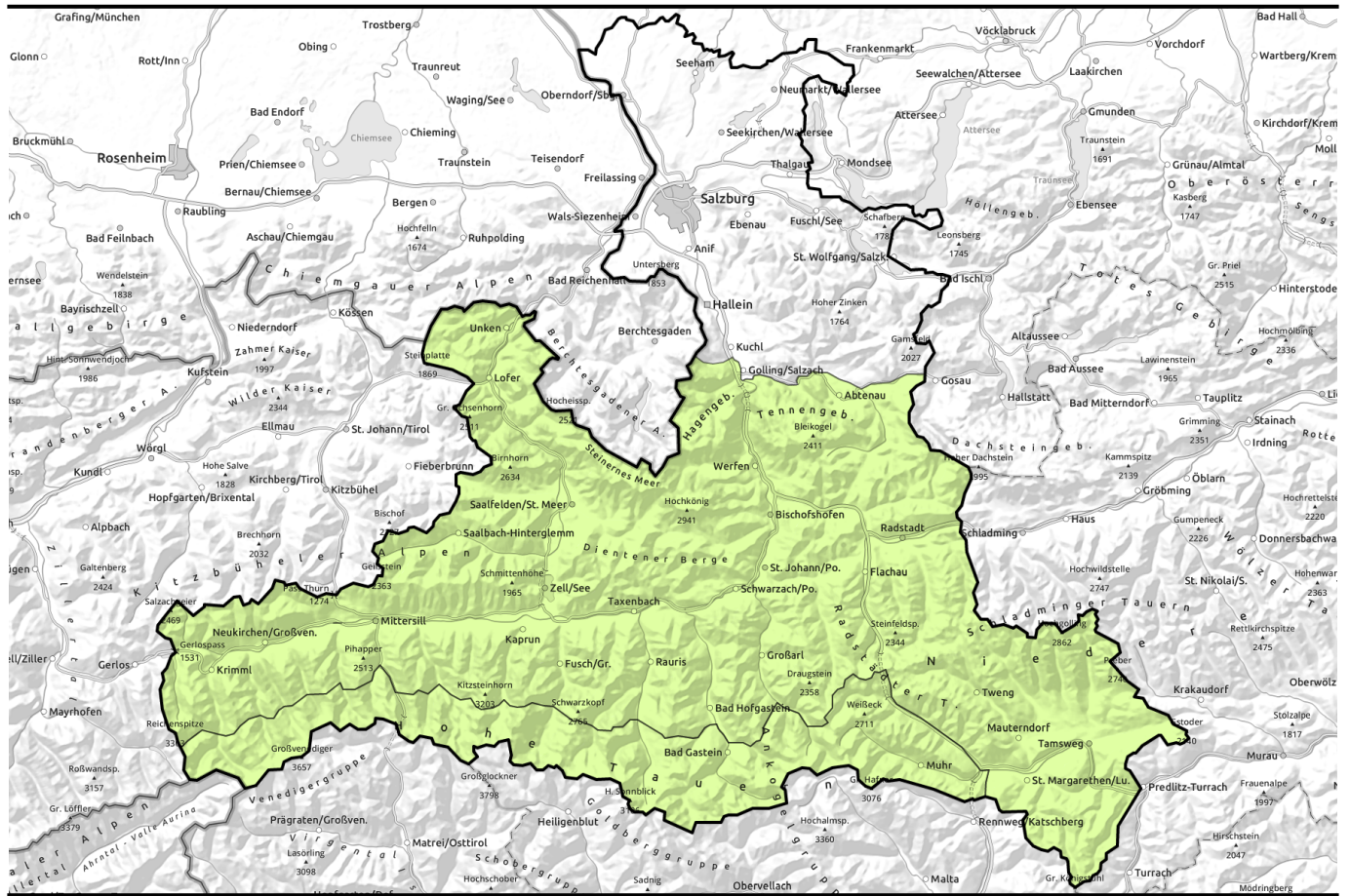


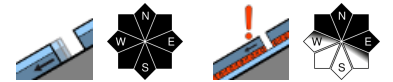
# Avalanche report for Tuesday, 03.01.2023



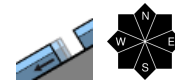
## Not much snow



Großenedigergruppe Alpenhauptkamm, Glocknergruppe Alpenhauptkamm, Goldberggruppe Alpenhauptkamm, Ankogelgruppe, Muhr



Oberpinzgauer Grasberge, Kitzbüheler Alpen, Glemmtal, Dientner Grasberge, Pongauer Grasberge, Niedere Tauern Nord, Niedere Tauern Alpenhauptkamm, Niedere Tauern Süd, Nockberge, Chiemgauer Alpen, Heutal, Reiteralpe, Loferer und Leoganger Steinberge, Steinernes Meer, Hochkönig, Hagengebirge, Göllstock, Tennengebirge, Gosaukamm, Goldberggruppe Nord, Glocknergruppe Nord, Großenedigergruppe Nord



### Avalanche problems



### Danger ratings



### Expositions



# Avalanche report for Tuesday, 03.01.2023

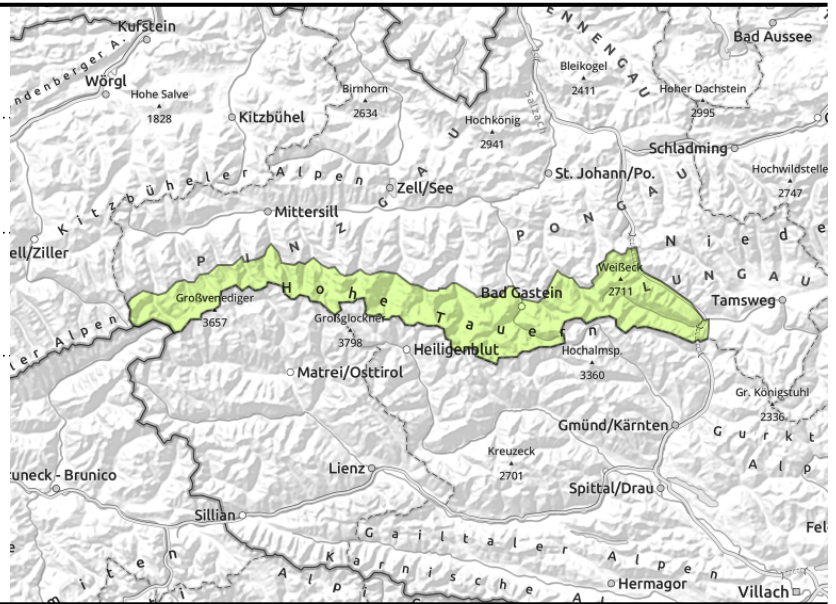
Großvenedigergruppe Alpenhauptkamm,  
Glocknergruppe Alpenhauptkamm, Goldberggruppe  
Alpenhauptkamm, Ankogelgruppe, Muhr



from smooth steep slopes  
which have not yet discharged



old snowpack near the ground  
is very weak in small areas



## Isolated glide-snow avalanches, small persistent weak layer

Avalanche danger above 2500 m is LOW.

Weak layers inside the old snowpack can on shady slopes above approximately 2500 m still can be easily triggered in very isolated cases, particularly on wind-protected slopes at the foot of rock walls or behind abrupt discontinuities in the terrain. Avalanches can attain medium size.

From smooth slopes which have not yet discharged (grass-covered, rock plates) small glide-snow avalanches can release in isolated cases.

### Snowpack structure

On north-facing slopes above 2500 m the snowpack layering is unfavourable due to a sequence of melt-freeze crusts and faceted crystals in the fundament, or else depth hoar. This applies particularly to wind-protected slopes.

Overall the snowpack has settled well and is quite compact. Melt-freeze crusts dominate.

Snow depths are highly varied. Below 1800 m there is little snow on the ground.

### Weather

On Tuesday the peaks will be partly shrouded in fog, but little precipitation is expected. In the afternoon, clouds will disperse, visibility will improve. A light to moderate westerly wind will be blowing. At 2000 m: 0 degrees; at 3000 m, -6 degrees.

On Wednesday, sunshine above the fogbanks, cloudless skies, clouds will move in during the afternoon. Westerly winds at light to moderate strength, brisker in the evening. At 2000 m: +2 degrees, at 3000 m, -4 degrees.

### Outlook

Little change expected. We are waiting for snowfall.

#### Avalanche problems



New snow



Wind drifted snow



Persistent weak layer



Wet snow



Gliding snow



Cornices



No problem

#### Danger ratings



1  
low



2  
moderate



3  
considerable



4  
high



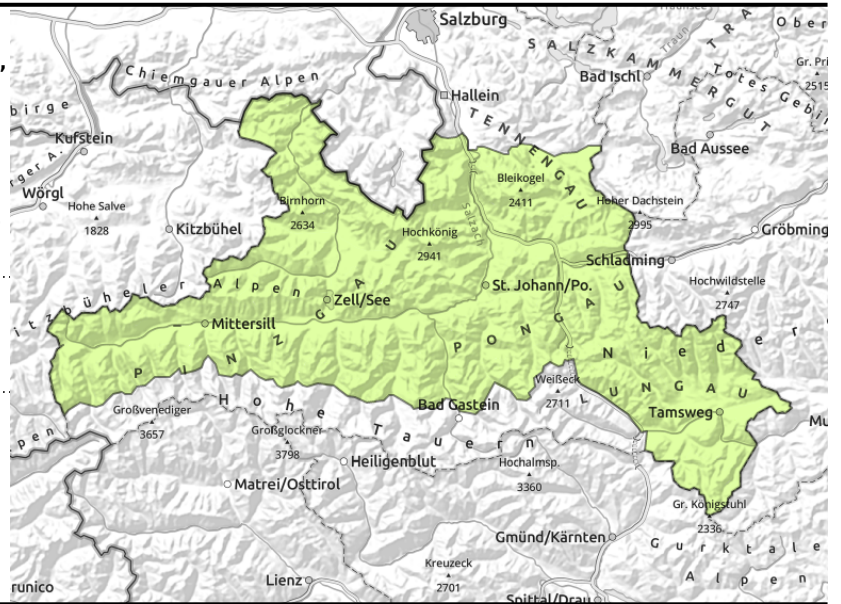
5  
very high

#### Expositions



# Avalanche report for Tuesday, 03.01.2023

**Oberpinzgauer Grasberge, Kitzbüheler Alpen, Glemmtal, Dientner Grasberge, Pongauer Grasberge, Niedere Tauern Nord, Niedere Tauern Alpenhauptkamm, Niedere Tauern Süd, Nockberge, Chiemgauer Alpen, Heutal, Reiteralpe, Loferer und Leoganger Steinberge, Steinernes Meer, Hochkönig, Hagengebirge, Göllstock, Tennengebirge, Gosaukamm, Goldberggruppe Nord, Glocknergruppe Nord, Großvenedigergruppe Nord**



from smooth steep slopes that have not yet discharged

## Not much snow, only isolated danger zones

Avalanche danger is LOW.

From steep smooth slopes which have not yet discharged (grassy slopes, rock plates) isolated small glide-snow avalanches can be released.

The snowdrifts which were recently generated are unlikely to trigger as avalanches, most are mere patches. Caution where falls are possible.

Snow depths are highly varied. Below 1800 m there is little snow on the ground.

### Snowpack structure

The snowpack has settled and consolidated in the warm temperatures. Melt-freeze crusts of all types dominate.

Weak layers more deeply embedded inside the snowpack are unlikely to trigger. More likely is that the snowpack will glide away as a whole over the smooth ground.

Snow depths are highly varied. Below 1800 m there is hardly any snow on the ground.

### Weather

On Tuesday the peaks will be partly shrouded in fog, but little precipitation is expected. In the afternoon, clouds will disperse, visibility will improve. A light to moderate westerly wind will be blowing. At 2000 m: 0 degrees; at 3000 m, -6 degrees.

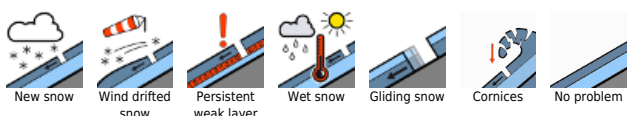
On Wednesday, sunshine above the fogbanks, cloudless skies, clouds will move in during the afternoon. Westerly winds at light to moderate strength, brisker in the evening. At 2000 m: +2 degrees, at 3000 m, -4 degrees.

### Outlook

Little change expected. We are waiting for snowfall.

Translated by Jeffrey McCabe, [www.creativtrans.com](http://www.creativtrans.com)

#### Avalanche problems



#### Danger ratings



#### Expositions

