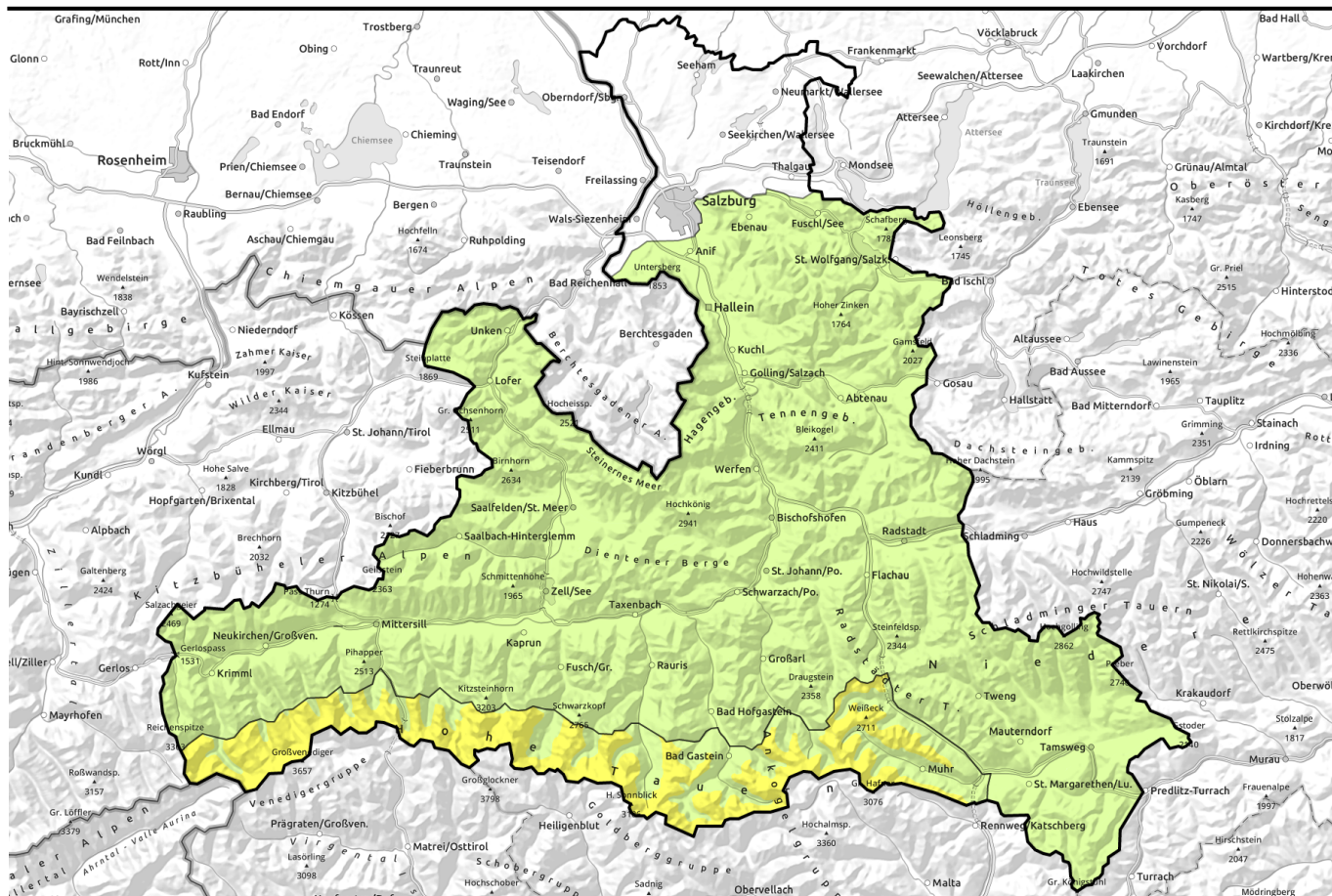
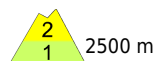


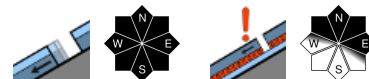
# Avalanche report for Sunday, 01.01.2023



## Very mild: foehn conditions



Großenedigergruppe Alpenhauptkamm, Glocknergruppe Alpenhauptkamm, Goldberggruppe Alpenhauptkamm, Ankogelgruppe, Muhr



Oberpinzgauer Grasberge, Kitzbüheler Alpen, Glemmtal, Dientner Grasberge, Pongauer Grasberge, Niedere Tauern Nord, Niedere Tauern Alpenhauptkamm, Niedere Tauern Süd, Nockberge, Osterhorngruppe, Gamsfeldgruppe, Chiemgauer Alpen, Heutal, Reiteralpe, Untersbergstock, Loferer und Leoganger Steinberge, Steinernes Meer, Hochkönig, Hagengebirge, Göllstock, Tennengebirge, Gosaukamm, Goldberggruppe Nord, Glocknergruppe Nord, Großenedigergruppe Nord



### Avalanche problems



### Danger ratings

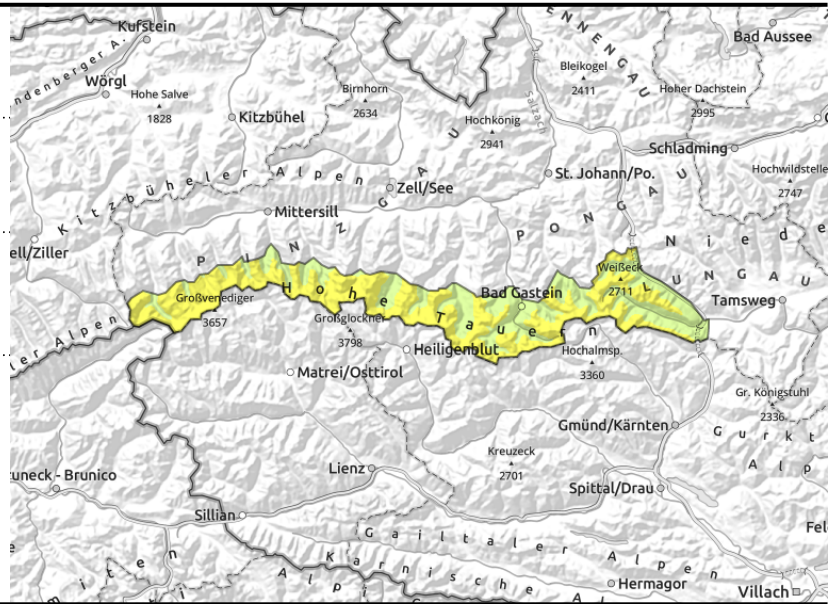
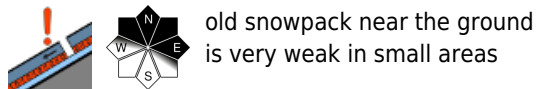
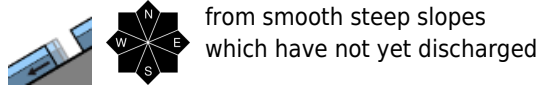
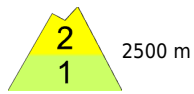


### Expositions



# Avalanche report for Sunday, 01.01.2023

Großvenedigergruppe Alpenhauptkamm,  
Glocknergruppe Alpenhauptkamm, Goldberggruppe  
Alpenhauptkamm, Ankogelgruppe, Muhr



## Isolated glide-snow avalanches, small persistent weak layer

Avalanche danger above 2500 m is MODERATE, below that altitude danger is LOW.

Weak layers inside the old snowpack can on shady slopes above approximately 2500 m still can be easily triggered, particularly on wind-protected slopes at the foot of rock walls or behind abrupt discontinuities in the terrain. Avalanches can attain medium size.

From smooth slopes which have not yet discharged (grass-covered, rock plates) small glide-snow avalanches can release in isolated cases.

### Snowpack structure

On north-facing slopes above 2500 m the snowpack layering is unfavourable due to a sequence of melt-freeze crusts and faceted crystals in the fundament, or else depth hoar. This applies particularly to wind-protected slopes.

Overall the snowpack has settled well and is quite compact. Melt-freeze crusts dominate. Snow depths are highly varied. Below 1800 m there is little snow on the ground.

### Weather

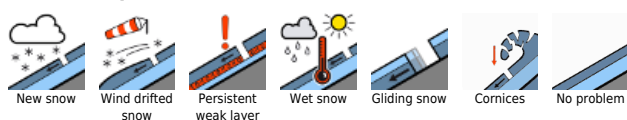
On Sunday, good visibility and sunshine. Only in the Tauern and Nockberge will there be cloud cover. Winds will be light to moderate from the south, on the Tauern Main Ridge reaching speeds of 30-50 km/hr. At 2000 m: 4-8 degrees; at 3000 m, 3 degrees.

On Monday, sunshine above the fog. Only thin cirrus clouds, visibility will be good. Foehn southerly wind at moderate to brisk strength. At 2000 m: 6 degrees; at 3000 m: 0 degrees.

### Outlook

Little change expected. We are waiting for snowfall.

#### Avalanche problems



#### Danger ratings

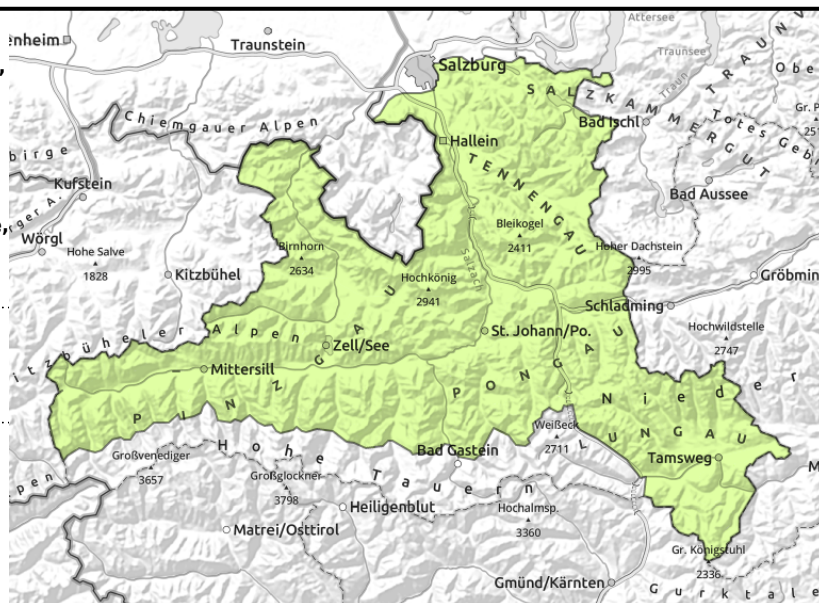


#### Expositions



# Avalanche report for Sunday, 01.01.2023

**Oberpinzgauer Grasberge, Kitzbüheler Alpen, Glemmtal, Dientner Grasberge, Pongauer Grasberge, Niedere Tauern Nord, Niedere Tauern Alpenhauptkamm, Niedere Tauern Süd, Nockberge, Osterhorngruppe, Gamsfeldgruppe, Chiemgauer Alpen, Heutal, Reiteralpe, Untersbergstock, Loferer und Leoganger Steinberge, Steinernes Meer, Hochkönig, Hagengebirge, Göllstock, Tennengebirge, Gosaukamm, Goldberggruppe Nord, Glocknergruppe Nord, Großvenedigergruppe Nord**



from smooth steep slopes which have not yet discharged

## Not much snow, only isolated danger zones

Avalanche danger is LOW.

From steep smooth slopes which have not yet discharged (grassy slopes, rock plates) isolated small glide-snow avalanches can be released.

The snowdrifts which were recently generated are unlikely to trigger as avalanches, most are mere patches. Caution where falls are possible.

### Snowpack structure

The snowpack as settled and consolidated due to higher temperatures and solar radiation.

Weak layers more deeply embedded inside the snowpack are currently unlikely to trigger, but the snow can glide as a mass over the smooth ground.

Snow depths are below average. Below 1800 m there is hardly any snow on the ground.

### Weather

On Sunday, good visibility and sunshine. Only in the Tauern and Nockberge will there be cloud cover. Winds will be light to moderate from the south, on the Tauern Main Ridge reaching speeds of 30-50 km/hr. At 2000 m: 4-8 degrees; at 3000 m, 3 degrees.

On Monday, sunshine above the fog. Only thin cirrus clouds, visibility will be good. Foehn southerly wind at moderate to brisk strength. At 2000 m: 6 degrees; at 3000 m: 0 degrees.

### Outlook

Little change expected. We are waiting for snowfall.

Translated by Jeffrey McCabe, [www.creativtrans.com](http://www.creativtrans.com)

#### Avalanche problems



#### Danger ratings



#### Expositions

