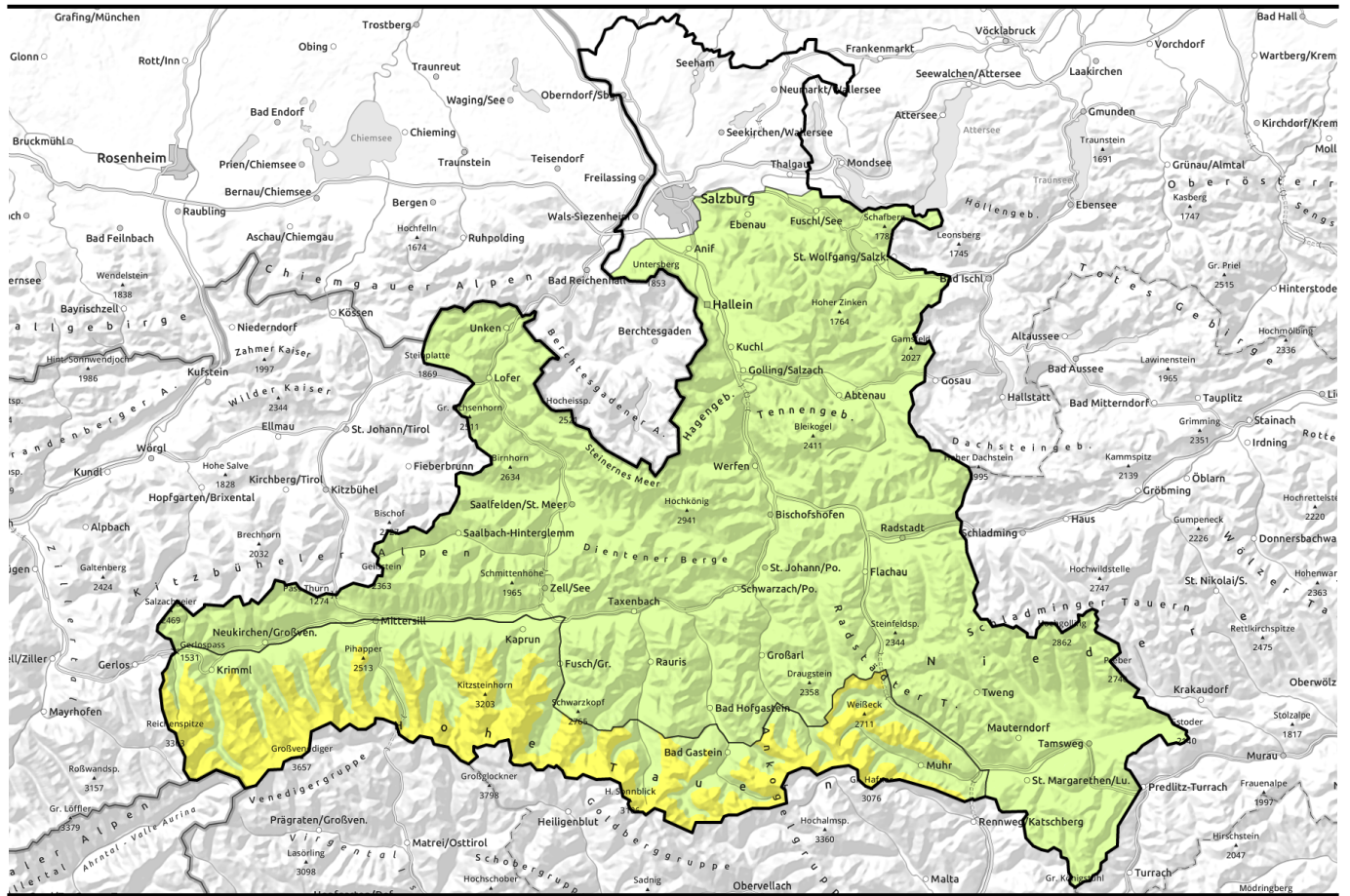


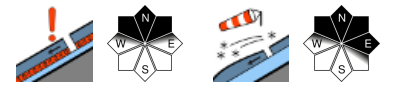
Avalanche report for Friday, 30.12.2022



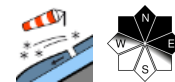
Apart from Hohe Tauern low avalanche danger



2300 m
Großenedigergruppe Alpenhauptkamm, Glocknergruppe Alpenhauptkamm, Goldberggruppe Alpenhauptkamm, Ankogelgruppe, Muhr, Großenedigergruppe Nord, Glocknergruppe Nord



Oberpinzgauer Grasberge, Kitzbüheler Alpen, Glemmtal, Dientner Grasberge, Pongauer Grasberge, Tennengebirge, Gosaukamm, Goldberggruppe Nord, Niedere Tauern Nord, Niedere Tauern Alpenhauptkamm, Niedere Tauern Süd, Nockberge, Osterhorngruppe, Gamsfeldgruppe, Chiemgauer Alpen, Heutal, Reiteralpe, Untersbergstock, Loferer und Leoganger Steinberge, Steinernes Meer, Hochkönig, Hagengebirge, Göllstock



Avalanche problems



Danger ratings

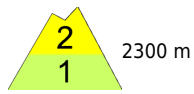


Expositions



Avalanche report for Friday, 30.12.2022

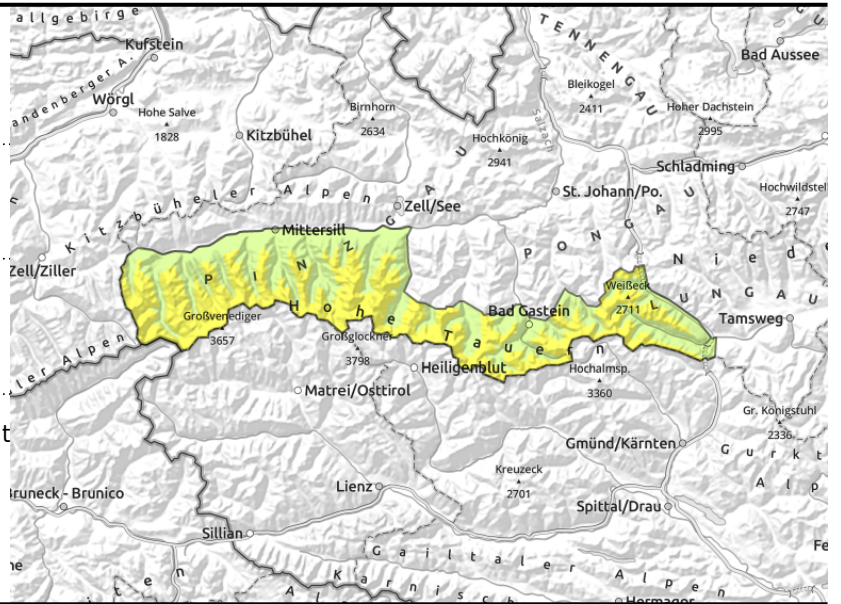
Großvenedigergruppe Alpenhauptkamm,
Glocknergruppe Alpenhauptkamm, Goldberggruppe
Alpenhauptkamm, Ankogelgruppe, Muhr,
Großvenedigergruppe Nord, Glocknergruppe Nord



unfavourable layering in high alpine regions: faceted, soft layers in the fundament



shallow, small drifted masses at high altitudes



Persistent weak layer and small snowdrifts

Avalanche danger above 2300 m is MODERATE, below that altitude danger is LOW.

Weak layers inside the old snowpack can on shady slopes above approximately 2300 m still can be easily triggered, particularly on wind-protected slopes at the foot of rock walls or behind abrupt discontinuities in the terrain. Avalanches can attain medium size.

In addition, fresh snowdrift accumulations are prone to triggering, particularly on steep (>35°) N/E facing slopes above 2300 m. Danger zones occur behind abrupt discontinuities in the terrain, in gullies and bowls. Difficult to recognize danger zones, particularly in early morning. Caution wherever falls are possible.

Reports from the relevant regions with regard to the persistent weak layer are few and far between currently (due to the snow situation); for that reason, these estimates are uncertain.

Snowpack structure

On north-facing slopes above 2300 m the snowpack layering is unfavourable due to a sequence of melt-freeze crusts and faceted crystals in the fundament, or else depth hoar. This applies particularly to wind-protected slopes.

Winds from southerly directions are forming small snowdrift accumulations anew, behind abrupt discontinuities in the terrain and in ridgeline gullies and bowls, on shady slopes atop a loose snowpack surface where they can be triggered in places. Snow depths are below average.

Below 1800 m there is little snow on the ground.

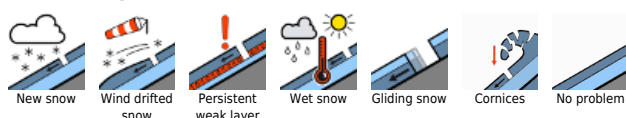
Weather

On Friday, visibility particularly in the Northern Alps will be reduced due to heavy cloud and light precipitation. The snowfall level lies at 1200 m. During the morning hours the cloud cover will disperse, visibility improve, the sun come out. During the day, brisk southerly winds will com up. At 2000 m: -1 to +4 degrees; at 3000 m, -6 degrees.

Outlook

Little change expected.

Avalanche problems



Danger ratings

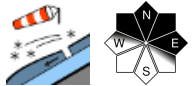
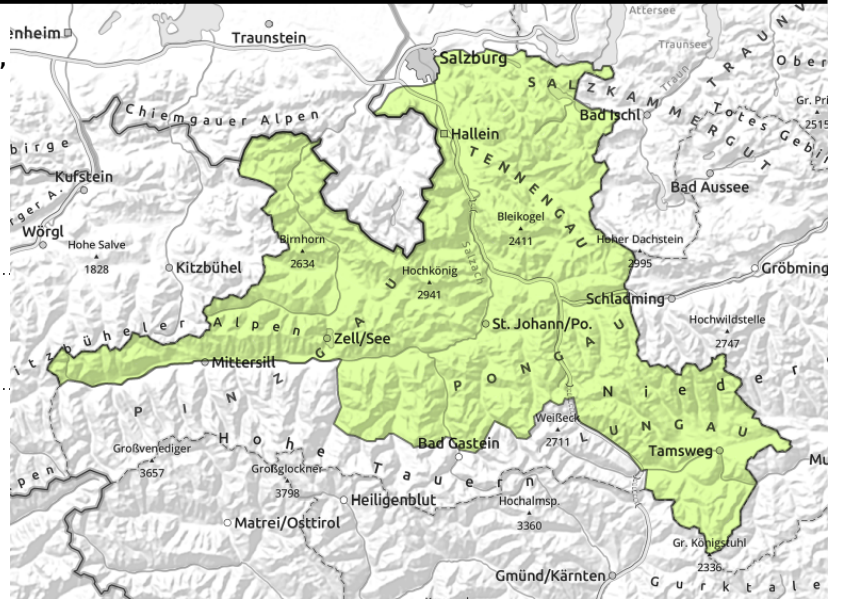


Expositions



Avalanche report for Friday, 30.12.2022

Oberpinzgauer Grasberge, Kitzbüheler Alpen, Glemmtal, Dientner Grasberge, Pongauer Grasberge, Tennengebirge, Gosaukamm, Goldberggruppe Nord, Niedere Tauern Nord, Niedere Tauern Alpenhauptkamm, Niedere Tauern Süd, Nockberge, Osterhorngruppe, Gamsfeldgruppe, Chiemgauer Alpen, Heutal, Reiteralpe, Untersbergstock, Loferer und Leoganger Steinberge, Steinernes Meer, Hochkönig, Hagengebirge, Göllstock



thin small drifts near ridgelines

Isolated avalanche prone locations

Avalanche danger is LOW.

Small fresh snowdrift patches can be triggered in isolated cases on very steep (>35°) N/E facing slopes. Trigger-sensitivity increases with ascending altitude. Avalanche prone locations are mostly near ridgelines and, pending good visibility, are easily recognized. Caution urged in terrain where falls are possible.

Snowpack structure

The old snowpack has settled and consolidated amid the higher temperatures and solar radiation. More deeply embedded weak layers are no longer likely to trigger.

The mostly small snowdrift accumulations from the beginning of this week have consolidated by and large. Only on shady ridgeline slopes at high altitudes are they still insufficiently bonded with the snowpack and can on very steep slopes (>35°) still be prone to triggering. Weak layers deeper down inside the snowpack are currently unlikely to trigger.

Snow depths are highly irregular. Below 1800 m there is not much snow on the ground.

Weather

On Friday, visibility particularly in the Northern Alps will be reduced due to heavy cloud and light precipitation. The snowfall level lies at 1200 m. During the morning hours the cloud cover will disperse, visibility improve, the sun come out. During the day, brisk southerly winds will come up. At 2000 m: -1 to +4 degrees; at 3000 m, -6 degrees.

Outlook

Strong winds will generate fresh, small snowdrift patches. These require attentiveness particularly in zones at high altitude where a fall is possible.

Translated by Jeffrey McCabe, www.creativtrans.com

Avalanche problems



Danger ratings



Expositions

