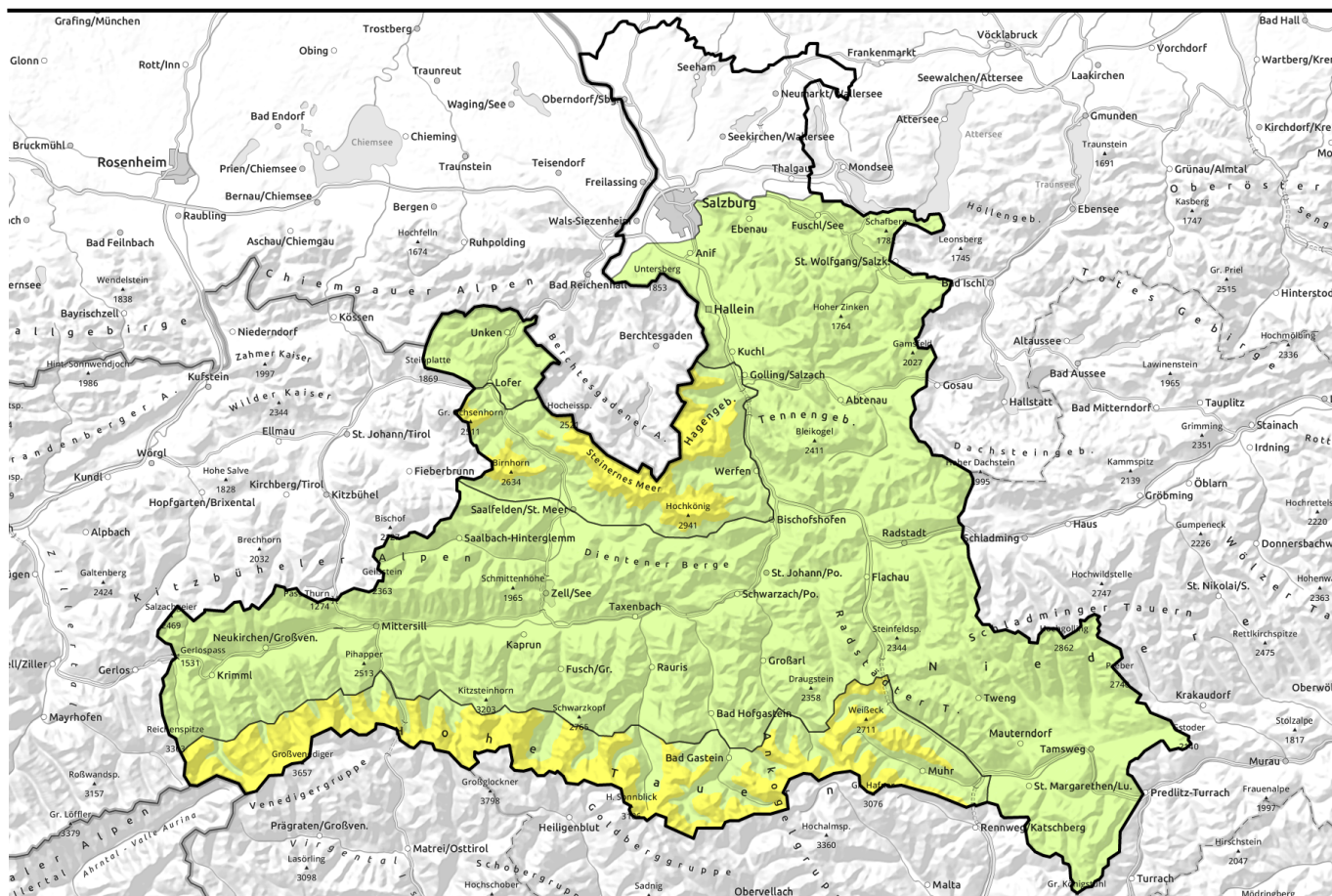


Avalanche report for Wednesday, 28.12.2022



Small snowdrift masses at high altitudes

- 2300 m

Großenedigergruppe Alpenhauptkamm, Glocknergruppe Alpenhauptkamm, Goldberggruppe Alpenhauptkamm, Ankogelgruppe, Muhr
- 2500 m

Loferer und Leoganger Steinberge, Steinernes Meer, Hochkönig, Hagengebirge, Göllstock
- Oberpinzgauer Grasberge, Kitzbüheler Alpen, Glemmtal, Dientner Grasberge, Pongauer Grasberge, Tennengebirge, Gosaukamm, Großenedigergruppe Nord, Glocknergruppe Nord, Goldberggruppe Nord, Niedere Tauern Nord, Niedere Tauern Alpenhauptkamm, Niedere Tauern Süd, Nockberge, Osterhorngruppe, Gamsfeldgruppe, Chiemgauer Alpen, Heutal, Reiteralpe, Untersbergstock

Avalanche problems



Danger ratings

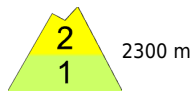



Expositions




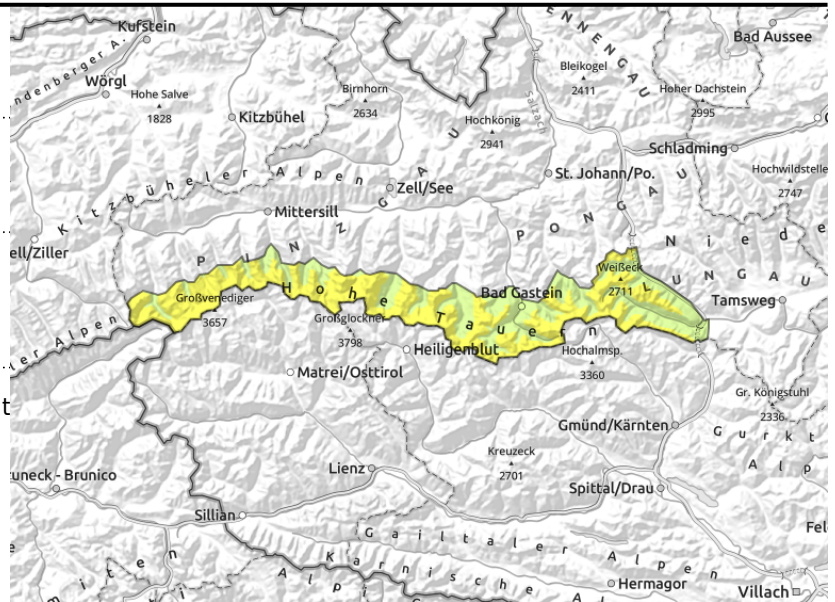
Avalanche report for **Wednesday, 28.12.2022**

Großvenedigergruppe Alpenhauptkamm, Glocknergruppe Alpenhauptkamm, Goldberggruppe Alpenhauptkamm, Ankogelgruppe, Muhr



 unfavourable layering in high alpine regions: faceted, soft layers in the fundament

 shallow, small drifted masses at high altitudes



Persistent weak layer and small snowdrifts

Avalanche danger above 2300 m is MODERATE, below that altitude danger is LOW. Weak layers inside the old snowpack can on shady slopes above approximately 2300 m still can be easily triggered, particularly on wind-protected slopes at the foot of rock walls or behind abrupt discontinuities in the terrain. Avalanches can attain medium size. In addition, fresh snowdrift accumulations are prone to triggering, particularly on steep (>35°) N/E facing slopes above 2500 m. Danger zones occur behind abrupt discontinuities in the terrain, in gullies and bowls. Difficult to recognize danger zones, particularly in early morning. Caution wherever falls are possible. Isolated small glide-snow avalanches are possible on steep grassy slopes as well as small wet loose-snow avalanches, due to a thoroughly wet snowpack, sunshine and warmth. *Reports from the relevant regions with regard to the persistent weak layer are few and far between currently (due to the snow situation); for that reason, these estimates are uncertain.*

Snowpack structure

On high-alpine north-facing slopes the snowpack layering is unfavourable due to a sequence of melt-freeze crusts and faceted crystals in the fundament above 2300 m. This applies particularly to wind-protected slopes. By Tuesday there was 5-10 cm of fresh snow registered amid moderate to strong westerly winds. Small snowdrifts accumulated behind crests and in ridgeline gullies and bowls, particularly on shady slopes they lie atop a loose snowpack surface and can be triggered in places. Snow depths are below average. Below 1800 m there is little snow on the ground.

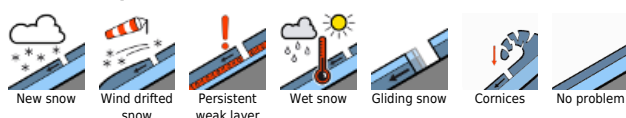
Weather

On Wednesday, heavy clouds will pass through, light conditions can become diffuse. These will move eastwards during the morning, sunny weather and good visibility will set in. Winds will remain weak. At 2000 m: -2 degrees; at 3000 m: -6 degrees.

Outlook

Fresh snowdrift accumulations are consolidating. Little change expected.

Avalanche problems



Danger ratings

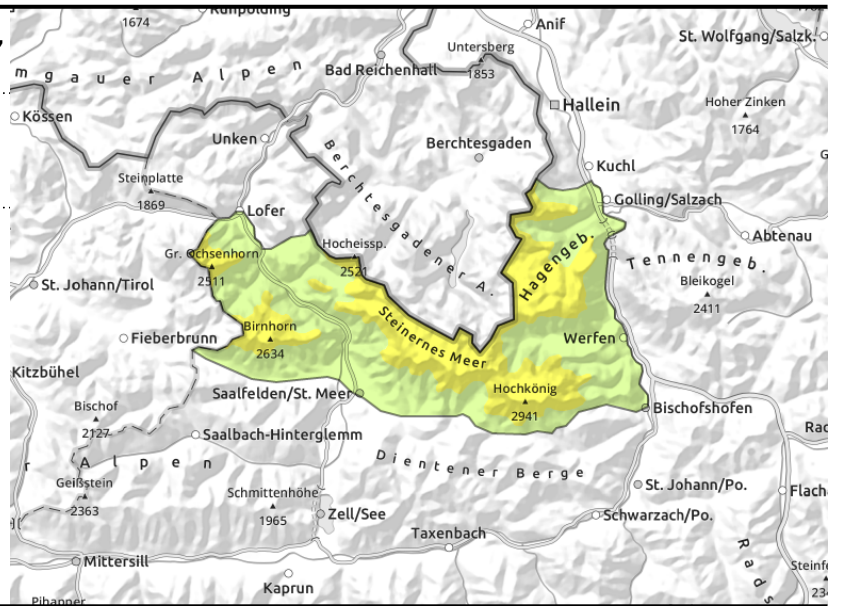
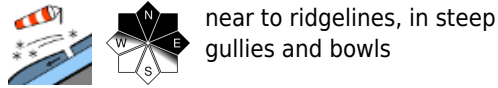


Expositions



Avalanche report for **Wednesday, 28.12.2022**

Loferer und Leoganger Steinberge, Steinernes Meer, Hochkönig, Hagengebirge, Göllstock



Fresh snowdrifts triggerable in some places

As a result of fresh snow and wind, small fresh snowdrift accumulations have been generated since Tuesday, deposited on steep (>35°) N/E slopes where in places they can be easily triggered. Size and trigger-sensitivity increase with ascending altitude. Above 2500m moderate avalanche danger prevails. Danger zones occur behind abrupt discontinuities in the terrain, in ridgeline gullies and bowls. Pending good visibility the avalanche prone locations are easily recognized.

Snowpack structure

The old snowpack has settled and consolidated amid the higher temperatures and solar radiation. By Tuesday there was 10-15 cm of fresh snow registered. Winds were moderate to strong from the west, transporting the loose snow, generating fresh snowdrift accumulations. There were deposited on wind-protected shady slopes atop a loose snowpack surface where they are prone to triggering. Snow depths are below average. Below 1800 m there is little snow on the ground.

Weather

On Wednesday, heavy clouds will pass through, light conditions can become diffuse. These will move eastwards during the morning, sunny weather and good visibility will set in. Winds will remain weak. At 2000 m: -2 degrees; at 3000 m: -6 degrees.

Outlook

Fresh snowdrift accumulations are consolidating. Avalanche danger will decrease.

Avalanche problems



Danger ratings

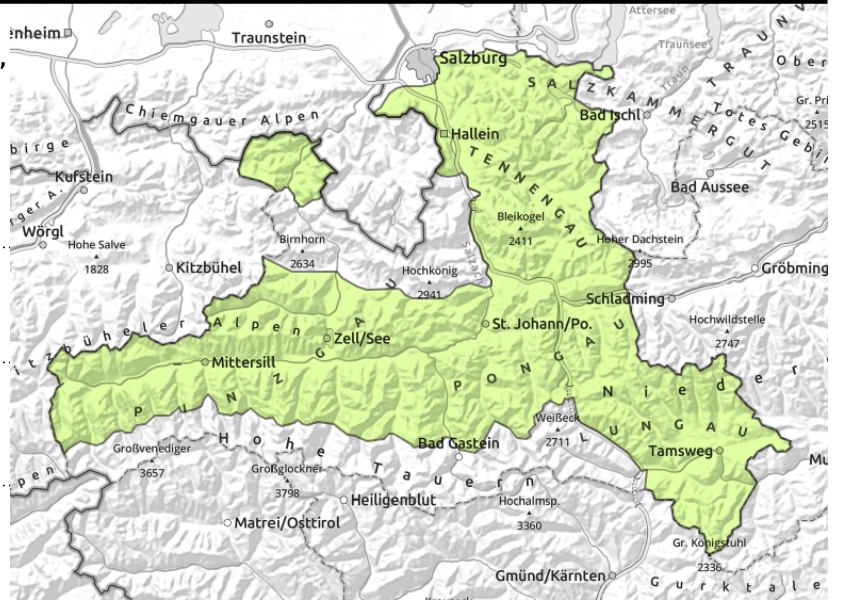


Expositions



Avalanche report for **Wednesday, 28.12.2022**

Oberpinzgauer Grasberge, Kitzbüheler Alpen, Glemmtal, Dientner Grasberge, Pongauer Grasberge, Tennengebirge, Gosaukamm, Großvenedigergruppe Nord, Glocknergruppe Nord, Goldberggruppe Nord, Niedere Tauern Nord, Niedere Tauern Alpenhauptkamm, Niedere Tauern Süd, Nockberge, Osterhorngruppe, Gamsfeldgruppe, Chiemgauer Alpen, Heutal, Reiteralpe, Untersbergstock



thin small drifts near ridgelines



seldom, in extremely steep terrain

Isolated avalanche prone locations

Avalanche danger is LOW.

Small fresh snowdrift patches can be triggered on extremely N/E slopes (>35°) above 2000 m.

Trigger-sensitivity increases with ascending altitude. Avalanche prone locations are mostly near ridgelines and easily recognized, pending adequate visibility. Caution in terrain where you can fall.

On steep grassy slopes, isolated small glide-snow avalanches are possible, particularly below 2400 m.

Snowpack structure

The old snowpack has settled and consolidated amid the higher temperatures and solar radiation. More deeply embedded weak layers are no longer likely to trigger.

North of the Main Alpine Ridge there was by Tuesday there was 10-15 cm of fresh snow registered.

Winds were moderate to strong from the west, transporting the loose snow, generating fresh snowdrift accumulations. There were deposited on wind-protected shady slopes atop a loose snowpack surface where they are prone to triggering.

Snow depths are below average. Below 1800 m there is little snow on the ground.

Weather

On Wednesday, heavy clouds will pass through, light conditions can become diffuse. These will move eastwards during the morning, sunny weather and good visibility will set in. Winds will remain weak.

At 2000 m: -2 degrees; at 3000 m: -6 degrees.

Outlook

Fresh snowdrift accumulations are consolidating. Avalanche danger will remain low.

Translated by Jeffrey McCabe, www.creativtrans.com

Avalanche problems



Danger ratings



Expositions

