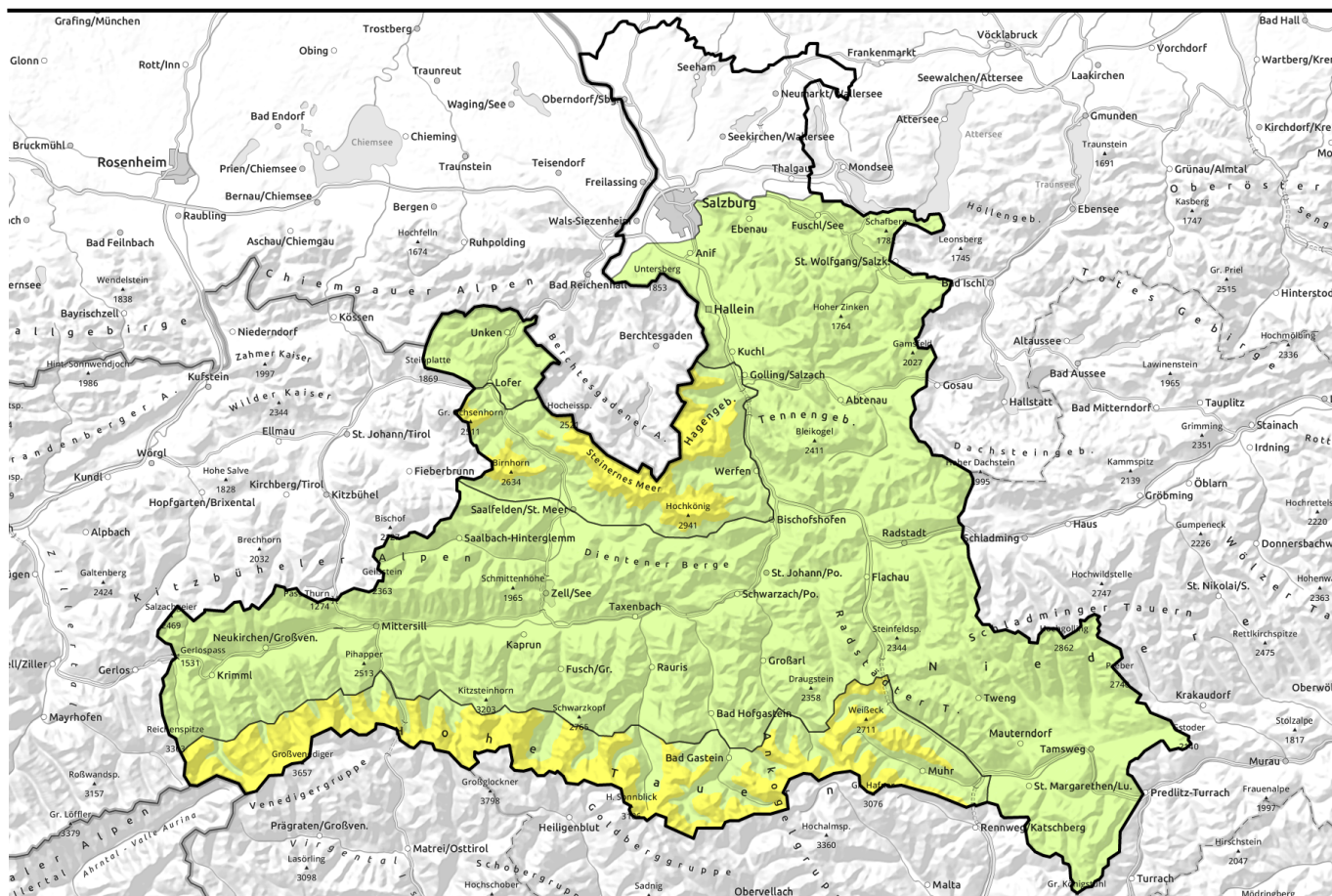

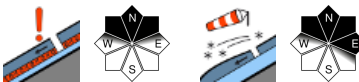






Avalanche report for Tuesday, 27.12.2022



Fresh snowdrift masses due to fresh snow and wind

- 
2300 m
 Großvenedigergruppe Alpenhauptkamm, Glocknergruppe Alpenhauptkamm, Goldberggruppe Alpenhauptkamm, Ankogelgruppe, Muhr
 
- 
2500 m
 Loferer und Leoganger Steinberge, Steinernes Meer, Hochkönig, Hagengebirge, Göllstock
 
- 
1
 Oberpinzgauer Grasberge, Kitzbüheler Alpen, Glemmtal, Dientner Grasberge, Pongauer Grasberge, Tennengebirge, Gosaukamm, Großvenedigergruppe Nord, Glocknergruppe Nord, Goldberggruppe Nord, Niedere Tauern Nord, Niedere Tauern Alpenhauptkamm, Niedere Tauern Süd, Nockberge, Osterhorngruppe, Gamsfeldgruppe, Chiemgauer Alpen, Heutal, Reiteralpe, Untersbergstock
 

Avalanche problems



Danger ratings

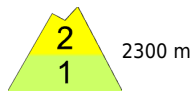


Expositions



Avalanche report for Tuesday, 27.12.2022

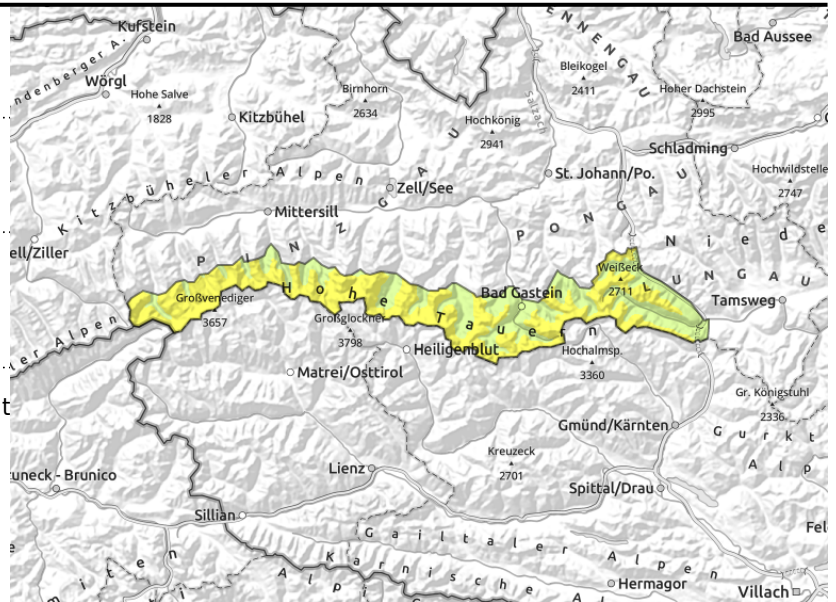
Großvenedigergruppe Alpenhauptkamm,
Glocknergruppe Alpenhauptkamm, Goldberggruppe
Alpenhauptkamm, Ankogelgruppe, Muhr



unfavourable layering in high alpine regions: faceted, soft layers in the fundament



shallow, small drifted masses at high altitudes



Persistent weak layer and small snowdrifts

Avalanche danger above 2300 m is MODERATE, below that altitude danger is LOW.

Weak layers inside the old snowpack can on shady slopes above approximately 2300 m still can be easily triggered, particularly on wind-protected slopes at the foot of rock walls or behind abrupt discontinuities in the terrain. Avalanches can attain medium size. In addition, fresh snowdrift accumulations are prone to triggering, particularly on steep (>35°) N/E facing slopes above 2500 m. Danger zones occur behind abrupt discontinuities in the terrain, in gullies and bowls. Difficult to recognize danger zones, particularly in early morning. Caution wherever falls are possible.

Isolated small glide-snow avalanches are possible on steep grassy slopes as well as small wet loose-snow avalanches, due to a thoroughly wet snowpack, sunshine and warmth.

Reports from the relevant regions with regard to the persistent weak layer are few and far between currently (due to the snow situation); for that reason, these estimates are uncertain.

Snowpack structure

On high-alpine north-facing slopes the snowpack layering is unfavourable due to a sequence of melt-freeze crusts and faceted crystals in the fundament above 2300 m. This applies particularly to wind-protected slopes. Snowdrift accumulations which have been generated since Saturday lie atop soft layers, particularly on shady slopes at high altitude, and are prone to triggering in places. Warm temperatures help the snowpack to settle, consolidate the drifts.

On Monday night, 5-10 cm of fresh snow is anticipated amid strong NW winds. Small snowdrift accumulations will be generated behind abrupt discontinuities in the terrain, in gullies and bowls. On shady slopes - also in other aspects in high alpine terrain - they will be deposited atop a loose old snowpack surface and can be triggered in places. Snow depths are below average. Below 1800 m there is little snow on the ground.

Weather

On Tuesday, heavy clouds will shroud the summits in fog, reduce visibility severely, light snowfall from place to place. In the Nockberge, adequate visibility from the start. During the course of the day, visibility will improve, sunny weather will prevail. Winds initially brisk to strong from the west, slackening off later on. At 2000 m: -5 degrees; at 3000 m, -10 degrees.

Avalanche problems



Danger ratings



Expositions

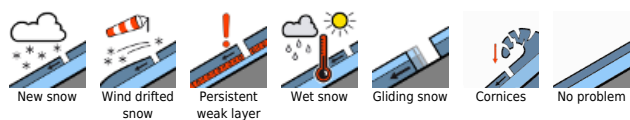


Avalanche report for **Tuesday, 27.12.2022**

Outlook

Fresh snowdrift accumulations are consolidating.

Avalanche problems



Danger ratings



Expositions

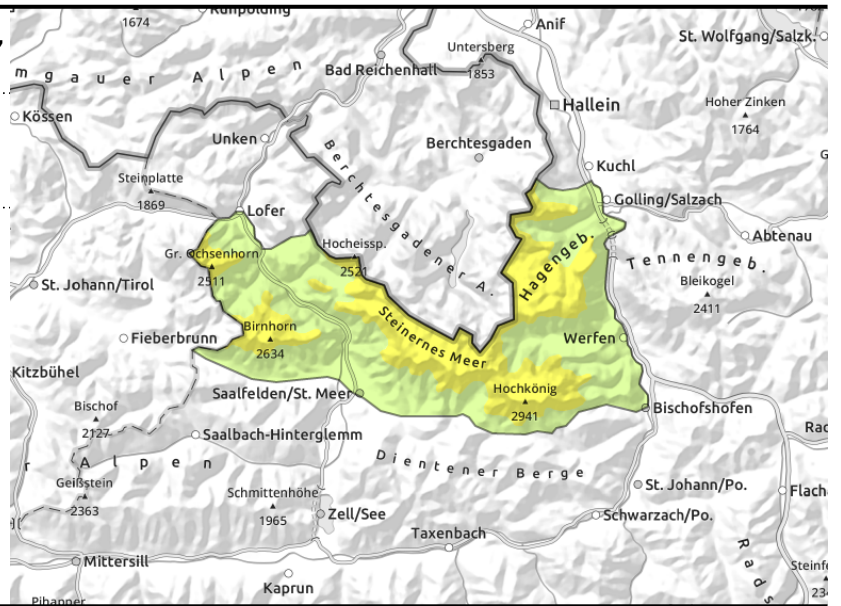


Avalanche report for **Tuesday, 27.12.2022**

Loferer und Leoganger Steinberge, Steinernes Meer, Hochkönig, Hagengebirge, Göllstock



near to and distant from ridgelines, in gullies and steep bowls



Fresh snowdrifts triggerable in some places

Avalanche danger above 2500 m is MODERATE, below that altitude danger is LOW.

As a result of fresh snow and wind, small fresh snowdrifts have been generated, deposited on very steep N/E slopes where they can often be easily triggered. Size of drifts and trigger-sensitivity increase with ascending altitude. Avalanche prone locations lie behind abrupt discontinuities in the terrain, in gullies and bowls. Particularly in early morning, the danger zones are difficult to recognise due to poor visibility.

Snowpack structure

The old snow has settled and consolidated since Sunday, due to higher temperatures and solar radiation. On Monday night, 10-15 cm of fresh snow is anticipated, accompanied by strong NW winds. Fresh snowdrift accumulations will be generated, deposited on wind-protected shady slopes where they will be prone to triggering. Snow depths are highly varied. Below 1800 m there is not much snow on the ground.

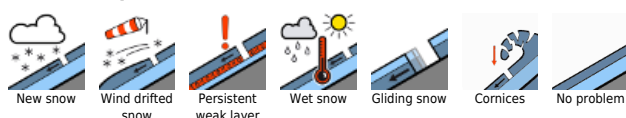
Weather

On Tuesday, heavy clouds will shroud the summits in fog, reduce visibility severely, light snowfall from place to place. In the Nockberge, adequate visibility from the start. During the course of the day, visibility will improve, sunny weather will prevail. Winds initially brisk to strong from the west, slackening off later on. At 2000 m: -5 degrees; at 3000 m, -10 degrees.

Outlook

Fresh snowdrift accumulations are consolidating.

Avalanche problems



Danger ratings

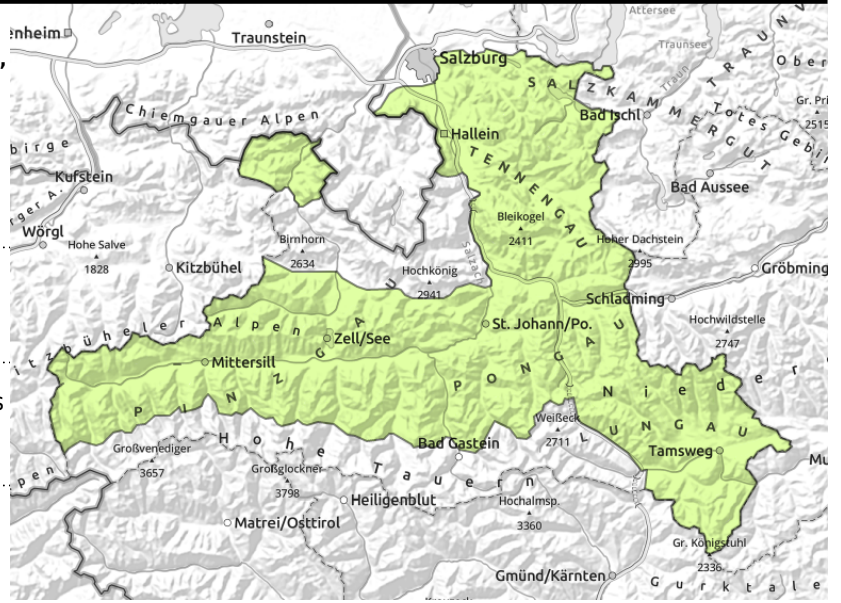


Expositions



Avalanche report for Tuesday, 27.12.2022

Oberpinzgauer Grasberge, Kitzbüheler Alpen, Glemmtal, Dientner Grasberge, Pongauer Grasberge, Tennengebirge, Gosaukamm, Großvenedigergruppe Nord, Glocknergruppe Nord, Goldberggruppe Nord, Niedere Tauern Nord, Niedere Tauern Alpenhauptkamm, Niedere Tauern Süd, Nockberge, Osterhorngruppe, Gamsfeldgruppe, Chiemgauer Alpen, Heutal, Reiteralpe, Untersbergstock



shallow small snowdrift masses near ridgelines



seldom, in extremely steep terrain

Isolated danger zones

Low avalanche danger.

Small fresh snowdrift patches on very steep (>35°) N/E slopes above 2000 m can be triggered in isolated places. Trigger-sensitive increases with ascending altitude. Most danger zones are near ridgelines and are easily recognised. Caution in terrain where falls are possible.

On steep grassy slopes small slide-snow avalanches continue to be possible, particularly below 2400 m

Snowpack structure

The old snow has settled and consolidated since Sunday, due to higher temperatures and solar radiation. On Monday night, 10-15 cm of fresh snow is anticipated, accompanied by strong NW winds. Fresh snowdrift accumulations will be generated, deposited on wind-protected shady slopes where they will be prone to triggering. Snow depths are highly varied. Below 1800 m there is not much snow on the ground.

Weather

On Tuesday, heavy clouds will shroud the summits in fog, reduce visibility severely, light snowfall from place to place. In the Nockberge, adequate visibility from the start. During the course of the day, visibility will improve, sunny weather will prevail. Winds initially brisk to strong from the west, slackening off later on. At 2000 m: -5 degrees; at 3000 m, -10 degrees.

Outlook

Fresh snowdrift accumulations are consolidating. Low avalanche danger continues.

Translated by Jeffrey McCabe, www.creativtrans.com

Avalanche problems



New snow



Wind drifted snow



Persistent weak layer



Wet snow



Gliding snow



Cornices



No problem

Danger ratings



1 low



2 moderate



3 considerable



4 high



5 very high

Expositions

