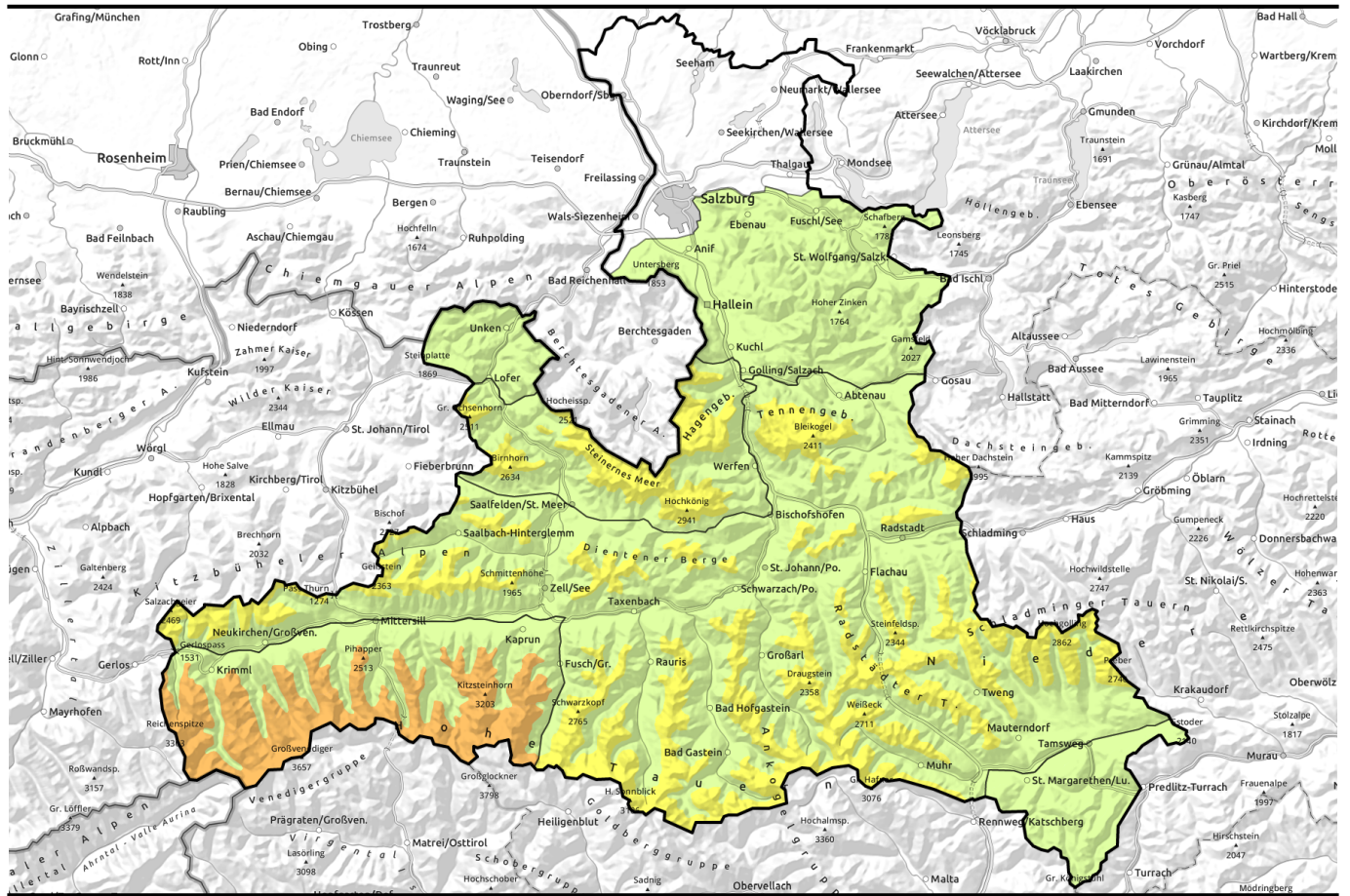


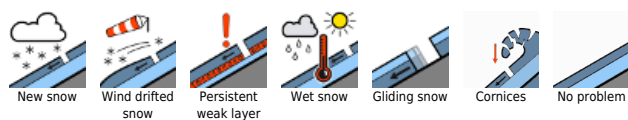
Avalanche report for Sunday, 25.12.2022



Considerable avalanche danger regionally

	<p>2300 m Großenedigergruppe Alpenhauptkamm, Glocknergruppe Alpenhauptkamm, Großenedigergruppe Nord, Glocknergruppe Nord</p>	
	<p>2300 m Kitzbüheler Alpen, Glemmtal, Dientner Grasberge, Pongauer Grasberge, Oberpinzgauer Grasberge, Goldberggruppe Nord, Niedere Tauern Nord, Niedere Tauern Alpenhauptkamm, Niedere Tauern Süd, Ankogelgruppe, Muhr, Goldberggruppe Alpenhauptkamm, Tennengebirge, Gosaukamm</p>	
	<p>2300 m Steinernes Meer, Hochkönig, Hagengebirge, Göllstock, Loferer und Leoganger Steinberge</p>	
	<p>Nockberge</p>	
	<p>Osterhorngruppe, Gamsfeldgruppe, Untersbergstock, Chiemgauer Alpen, Heutal, Reiteralpe</p>	

Avalanche problems



Danger ratings

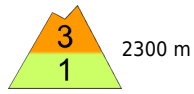


Expositions



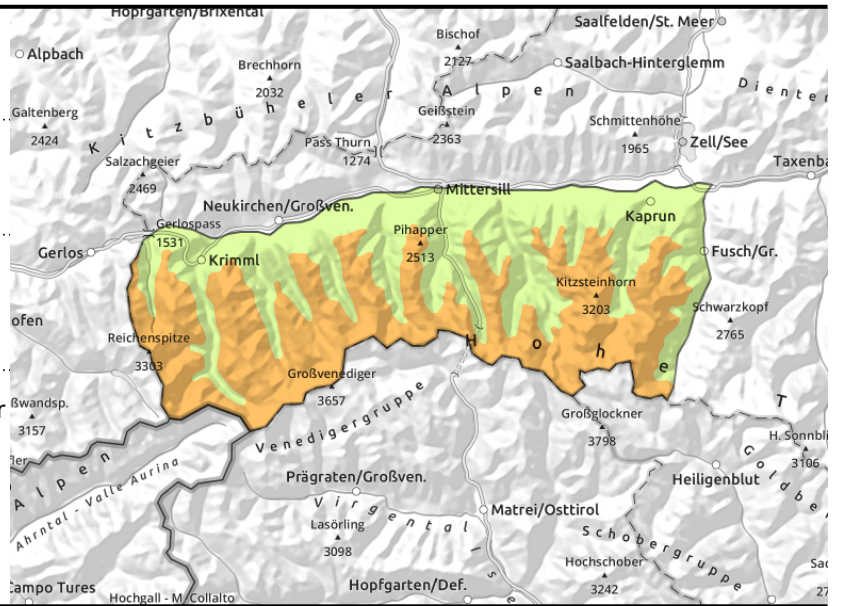
Avalanche report for Sunday, 25.12.2022

**Großvenedigergruppe Alpenhauptkamm,
Glocknergruppe Alpenhauptkamm,
Großvenedigergruppe Nord, Glocknergruppe Nord**



unfavourable layering in high alpine regions: faceted, soft layers in the fundament

in gullies and steep bowls, near to and distant from ridgelines



Persistent weak layer in high alpine regions

Avalanche danger above 2300 m is CONSIDERABLE, below that altitude danger is LOW. Weak layers inside the old snowpack can on shady slopes above approximately 2300 m still be triggered, particularly on wind-protected slopes at the foot of rock walls or behind abrupt discontinuities in the terrain. Avalanches can attain medium size. In addition, fresh snowdrift accumulations are prone to triggering, particularly on steep (>30°) N/E facing slopes above 2200 m. Danger zones occur behind abrupt discontinuities in the terrain, in gullies and bowls, the size and trigger-sensitivity increasing with ascending altitude. Fractures down to deeper layers is possible. Small glide-snow avalanches are still possible.

Reports from the relevant regions with regard to the persistent weak layer are few and far between currently (due to the snow situation); for that reason, these estimates are uncertain.

Snowpack structure

There has been 10-15 cm of fresh snow registered, amid strong-to-stormy winds which transported the snow in highly irregular fashion. The snowdrifts were deposited in gullies and bowls; the crests and ridges are snowblown bare. The snowdrifts lie particularly atop soft layers, on shady slopes at high altitudes. On high-alpine north-facing slopes the layer above 2300 m is often unfavourable due to a sequence of melt-freeze crusts and faceted crystals. This applies particularly to wind-protected slopes.

Below 2300 m the precipitation often fell as rain, which is leading to increasingly frequent wet-snow and glide-snow avalanches. Due to the dropping temperature on Saturday, the snowpack has stabilised. On Sunday it will be quite mild, the zero-degree level will ascend to above 3000 m. Thereby the snowdrifts will rapidly consolidate. Below 1800 m there is little snow on the ground.

Weather

Sunday: On Christmas Day, very fine weather with lots of sunshine. Residual cloud and fogbanks will recede, visibility will be unhindered. Winds will be light. It will be very mild. At 2000 m: 2-7 degrees; at 3000 m at midday, 0 degrees.

Monday: Above the layers of fog, visibility on Boxing Day will be very good, only some cirrus clouds far above summit level. Winds will be mostly light except on the Main Tauern Ridge (30-40 km/hr) from the south. Still mild: at 2000 m at midday 4 degrees, at 3000 m 0 degrees.

Avalanche problems



Danger ratings



Expositions



Avalanche report for **Sunday, 25.12.2022**

Outlook

Avalanche danger will decrease somewhat. Snowdrift accumulations are prone to triggering only in isolated cases in high alpine regions.

Avalanche problems



Danger ratings

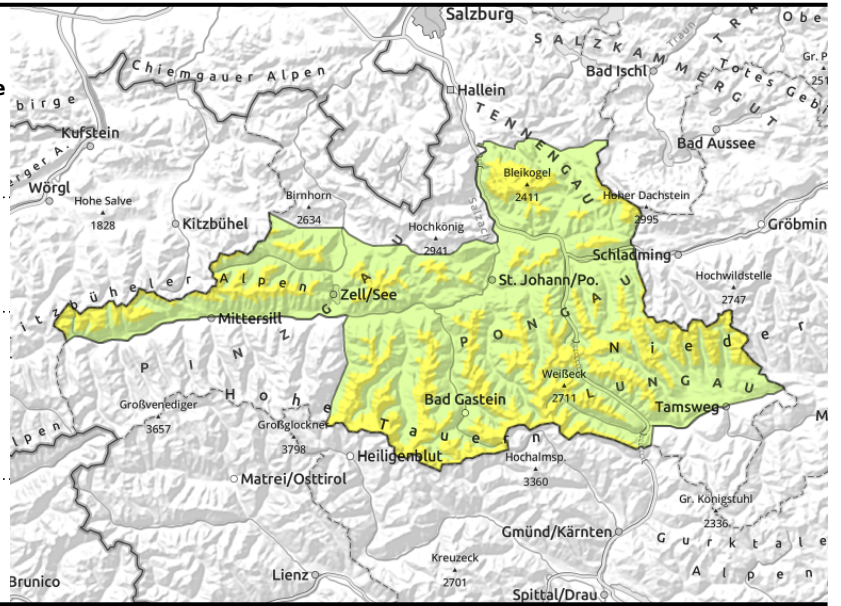




Expositions





Avalanche report for Sunday, 25.12.2022

Kitzbüheler Alpen, Glemmtal, Dientner Grasberge, Pongauer Grasberge, Oberpinzgauer Grasberge, Goldberggruppe Nord, Niedere Tauern Nord, Niedere Tauern Alpenhauptkamm, Niedere Tauern Süd, Ankogelgruppe, Muhr, Goldberggruppe Alpenhauptkamm, Tennengebirge, Gosaukamm



  near to and distant from ridgelines, trigger-sensitivity increases with ascending altitude

  avoid zones below glide cracks

Snowdrift problem, esp. at high altitude

Avalanche danger above 2300 m is MODERATE, below that altitude LOW.

As a result of snowfall and strong westerly winds, fresh snowdrift masses have been formed, prone to triggering, particularly on steep (>30°) N/E facing slopes above 2200 m. Danger zones occur behind abrupt discontinuities in the terrain, in gullies and bowls, the size and trigger-sensitivity increasing with ascending altitude. In the areas where snowfall has been heaviest the danger zones are larger and more numerous, the danger correspondingly higher.

On steep grassy slopes small-to-medium glide snow avalanches continue to be possible. Avoid zones below glide cracks. In addition, due to solar radiation in the areas where snowfall has been heavy, small naturally triggered loose-snow avalanches can be expected in steep rocky terrain.

Snowpack structure

There has been 10-20 cm of fresh snow registered, amid strong-to-stormy winds which transported the snow in highly irregular fashion. The snowdrifts were deposited in gullies and bowls; the crests and ridges are snowblown bare. The snowdrifts lie particularly atop soft layers, on shady slopes at high altitudes. On high-alpine north-facing slopes the layer above 2300 m is often unfavourable due to a sequence of melt-freeze crusts and faceted crystals. This applies particularly to wind-protected slopes.

Below 2300 m the precipitation often fell as rain, which is leading to increasingly frequent wet-snow and glide-snow avalanches. Due to the dropping temperature on Saturday, the snowpack has stabilised. On Sunday it will be quite mild, the zero-degree level will ascend to above 3000 m. Thereby the snowdrifts will rapidly consolidate. Below 1800 m there is little snow on the ground.

Weather

Sunday: On Christmas Day, very fine weather with lots of sunshine. Residual cloud and fogbanks will recede, visibility will be unhindered. Winds will be light. It will be very mild. At 2000 m: 2-7 degrees; at 3000 m at midday, 0 degrees.

Monday: Above the layers of fog, visibility on Boxing Day will be very good, only some cirrus clouds far above summit level. Winds will be mostly light except on the Main Tauern Ridge (30-40 km/hr) from the south. Still mild: at 2000 m at midday 4 degrees, at 3000 m 0 degrees.

Avalanche problems



Danger ratings



Expositions



Avalanche report for **Sunday, 25.12.2022**

Outlook

Avalanche danger will decrease somewhat. Snowdrift accumulations are prone to triggering only in isolated cases in high alpine regions.

Avalanche problems



Danger ratings



Expositions



Avalanche report for Sunday, 25.12.2022

Steinernes Meer, Hochkönig, Hagengebirge, Göllstock, Loferer und Leoganger Steinberge



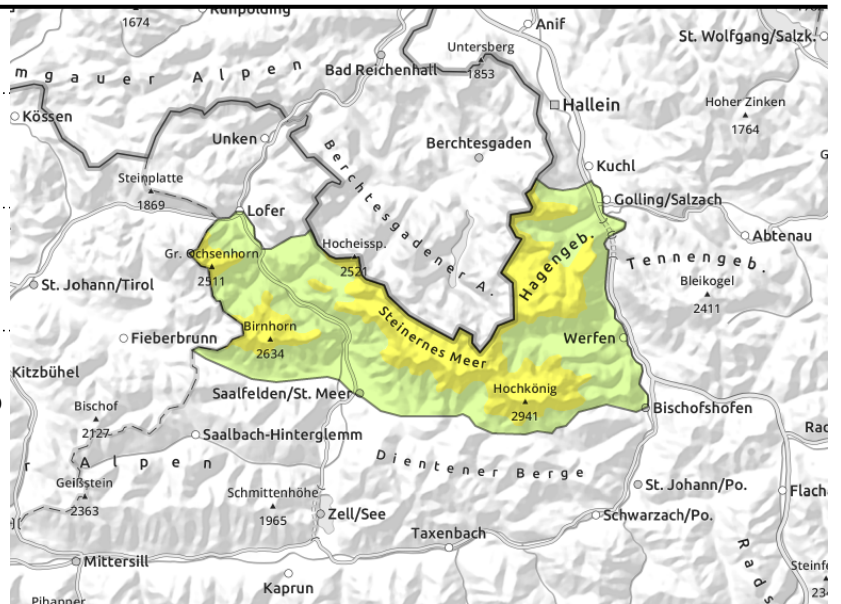
2300 m



caution urged towards covered snowdrifts



naturally triggered loose-snow avalanches on extremely steep sunny slopes (>40°)



Blanketed snowdrift accumulations and naturally triggered loose-snow avalanches

Avalanche danger above 2300 m is MODERATE, below that altitude danger is LOW. As the result of large amounts of fresh snow plus wind from the west, widespread snowdrift accumulations have been generated: trigger-sensitive particularly on N/E slopes, triggerable even by one sole winter sports enthusiast. Danger zones occur above 2300 m behind abrupt discontinuities in the terrain, in gullies and bowls. They will get blanketed on Saturday night, no longer be visible to the naked eye. Likelihood of triggering increases with ascending altitude. Avalanches can grow to medium size. Due to solar radiation and higher temperatures, small-to-medium loose-snow avalanches can be expected on extremely steep E/S/W slopes.

Snowpack structure

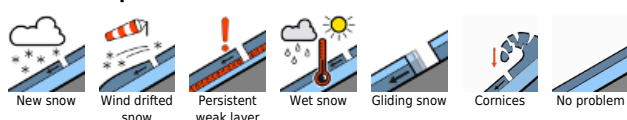
There has been 20-40 cm of fresh snow registered, more from place to place, amid strong-to-stormy winds which transported the snow in highly irregular fashion. The snowdrifts were deposited in gullies and bowls; the crests and ridges are snowblown bare. The snowdrifts lie particularly atop soft layers, on shady slopes at high altitudes. As a result of 5-10 cm of additional snowfall on Christmas Eve the snowdrift accumulations will get blanketed. Below 1900 m the precipitation will fall as rain. Below 2300 m the precipitation often fell as rain, which is leading to increasingly frequent wet-snow and glide-snow avalanches. Due to the dropping temperature on Saturday, the snowpack has stabilised. On Sunday it will be quite mild, the zero-degree level will ascend to above 3000 m. Thereby the snowdrifts will rapidly consolidate. Below 1800 m there is little snow on the ground.

Weather

Sunday: On Christmas Day, very fine weather with lots of sunshine. Residual cloud and fogbanks will recede, visibility will be unhindered. Winds will be light. It will be very mild. At 2000 m: 2-7 degrees; at 3000 m at midday, 0 degrees.

Monday: Above the layers of fog, visibility on Boxing Day will be very good, only some cirrus clouds far above summit level. Winds will be mostly light except on the Main Tauern Ridge (30-40 km/hr) from the south. Still mild: at 2000 m at midday 4 degrees, at 3000 m 0 degrees.

Avalanche problems



Danger ratings



Expositions



Avalanche report for **Sunday, 25.12.2022**

Outlook

Avalanche danger will decrease somewhat. Snowdrift accumulations are prone to triggering only in isolated cases in high alpine regions.

Avalanche problems



Danger ratings



Expositions

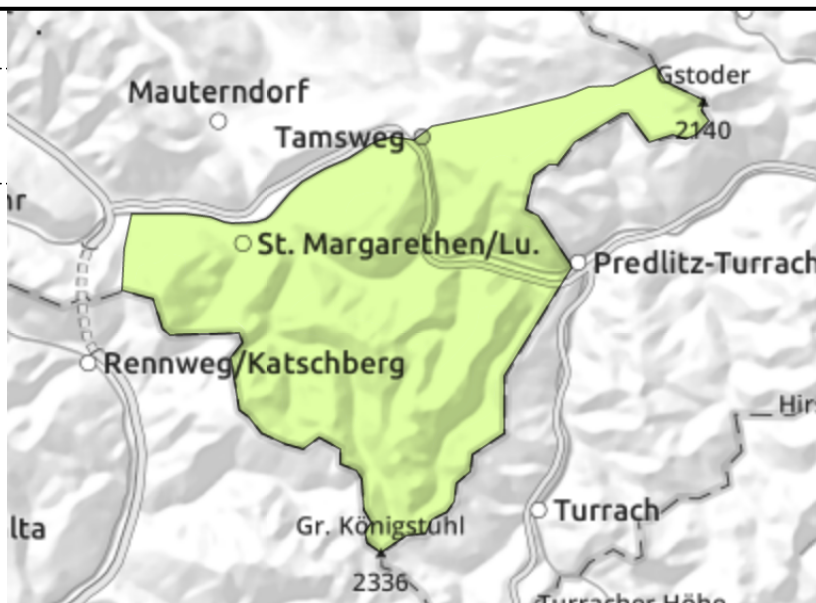


Avalanche report for **Sunday, 25.12.2022**

Nockberge



isolated, small, on extremely steep grassy slopes



Isolated small glide-snow avalanches

Avalanche danger is LOW. On extremely steep grassy slopes, isolated small glide-snow avalanches are possible.

Snowpack structure

The snowpack is thoroughly set due to rainfall and warmth. Fresh snow has not been added to it. At high altitudes the surface was able to consolidate somewhat with the lower temperatures. Sunshine and warmth on Sunday will swiftly soften the surface, especially on sunny slopes. Snow depths are below average. Not much snow at low altitudes.

Weather

Sunday: On Christmas Day, very fine weather with lots of sunshine. Residual cloud and fogbanks will recede, visibility will be unhindered. Winds will be light. It will be very mild. At 2000 m: 2-7 degrees; at 3000 m at midday, 0 degrees.

Monday: Above the layers of fog, visibility on Boxing Day will be very good, only some cirrus clouds far above summit level. Winds will be mostly light except on the Main Tauern Ridge (30-40 km/hr) from the south. Still mild: at 2000 m at midday 4 degrees, at 3000 m 0 degrees.

Outlook

LOW avalanche danger continues.

Avalanche problems



Danger ratings

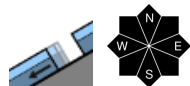


Expositions

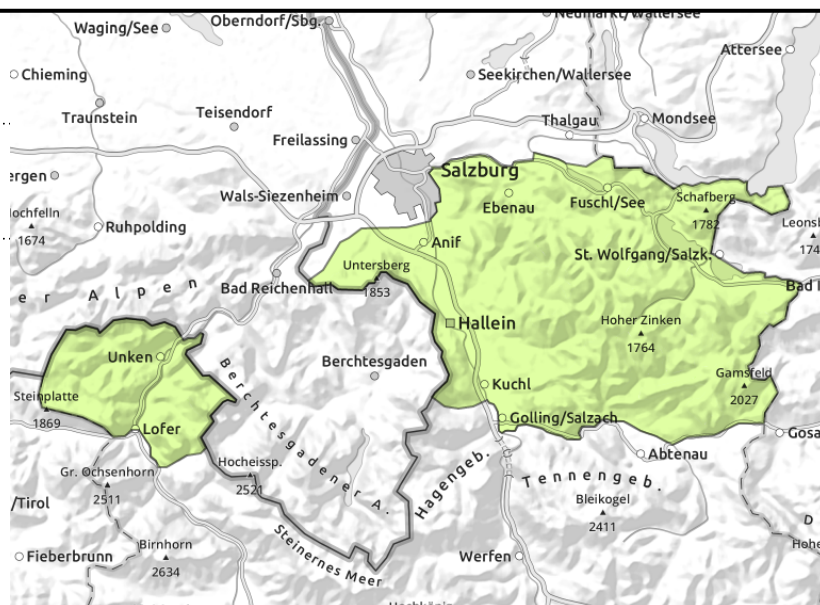


Avalanche report for Sunday, 25.12.2022

Osterhorngruppe, Gamsfeldgruppe, Untersbergstock, Chiemgauer Alpen, Heutal, Reiteralpe



very isolated, in extremely steep grassy terrain



Low avalanche danger

Avalanche danger is predominantly LOW. Only isolated steep slopes which have not yet discharged will have naturally triggered small wet loose-snow avalanches or glide-snow avalanches. Due to the below average snow depths, touring possibilities are reduced.

Snowpack structure

The snowpack was made thoroughly wet by rainfall, often wet down to the ground. At higher altitudes the surface was able to consolidate somewhat on Saturday. Sunshine and warmth on Sunday will swiftly soften the surface, especially on sunny slopes. Snow depths are below average. Not much snow at low altitudes.

Weather

Sunday: On Christmas Day, very fine weather with lots of sunshine. Residual cloud and fogbanks will recede, visibility will be unhindered. Winds will be light. It will be very mild. At 2000 m: 2-7 degrees; at 3000 m at midday, 0 degrees.

Monday: Above the layers of fog, visibility on Boxing Day will be very good, only some cirrus clouds far above summit level. Winds will be mostly light except on the Main Tauern Ridge (30-40 km/hr) from the south. Still mild: at 2000 m at midday 4 degrees, at 3000 m 0 degrees.

Outlook

LOW avalanche danger

Translated by Jeffrey McCabe, www.creativtrans.com

Avalanche problems



Danger ratings



Expositions

