


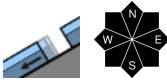

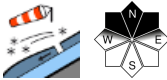


Palpable moistening of the snowpack at high altitudes

- 
2300 m
Großenedigergruppe Alpenhauptkamm, Glocknergruppe Alpenhauptkamm, Goldberggruppe Alpenhauptkamm, Ankogelgruppe, Muhr

- 
Chiemgauer Alpen, Heutal, Reiteralpe, Osterhorngruppe, Gamsfeldgruppe, Untersbergstock, Kitzbüheler Alpen, Glemmtal, Dientner Grasberge, Pongauer Grasberge, Tennengebirge, Gosaukamm, Loferer und Leoganger Steinberge, Oberpinzgauer Grasberge, Großenedigergruppe Nord, Glocknergruppe Nord, Goldberggruppe Nord, Niedere Tauern Nord, Niedere Tauern Alpenhauptkamm, Niedere Tauern Süd, Steinernes Meer, Hochkönig, Hagengebirge, Göllstock

- 
2000 m
Nockberge


Avalanche problems



Danger ratings



Expositions



Tuesday, 20.12.2022

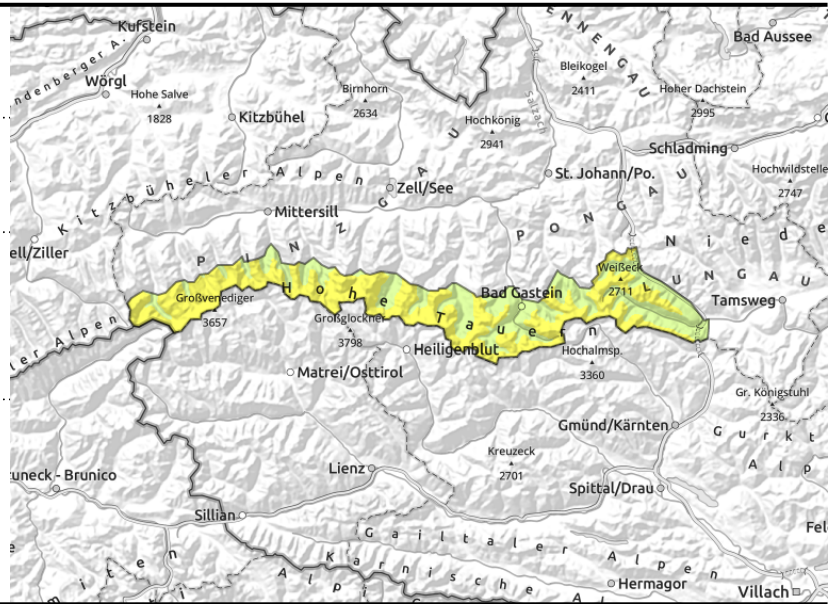
Großvenedigergruppe Alpenhauptkamm, Glocknergruppe Alpenhauptkamm, Goldberggruppe Alpenhauptkamm, Ankogelgruppe, Muhr



unfavourable layering in high alpine regions: faceted, soft layers and often embedded surface hoar



on steep grass-covered slopes. avoid zones beneath glide cracks



Isolated persistent weak layer on shady high altitudes slopes

Weak layers inside the old snowpack can on shady slopes above approximately 2300 m still be triggered, particularly on wind-protected slopes at the foot of rock walls or behind abrupt discontinuities in the terrain. Danger zones are rare, difficult to recognize. Avalanches can grow to medium size.

The no longer fresh snowdrift accumulations of recent days can not be quite as easily triggered, except in very steep ridgeline shady terrain above about 2600 m. The danger zones are generally easy to recognize, should be circumvented most of all in terrain where one could be forced to take a fall.

In addition, the rising temperatures and some sunshine make some naturally triggered loose-snow slides likely on extremely steep slopes or hillsides, as well as glide-snow avalanches on steep grass-covered slopes. This applies to above 2400 m. Due to the shallow snowpack, releases will remain small-sized.

Snowpack structure

The snowpack is unfavourable over widespread areas and still shallow. On high alpine shady slopes the layering is often unfavourable: a sequence of melt-freeze crusts and faceted crystals inside the fundament, in places with blanketed surface hoar. This applies particularly to wind-protected terrain. Fresh and new snowdrifts from the end of last week have settled thanks to mild temperatures, they are no longer prone to triggering. The rising southerly winds along the Main Alpine Ridge on Monday night will not be able to transport much snow. Only on the very steep shady slopes at high altitudes, isolated small snowdrift accumulations can be generated and older snowdrifts be triggered.

Due to the warm temperatures the snowpack has been moistened up to high altitudes. On Tuesday the trend will continue. As a result of increasing moistening of the shallow snowpack, slides of the unbonded snow masses on extremely steep slopes will occur, as well as increasing glide-snow avalanche activity on steep grassy slopes.

Weather

Tuesday: good visibility, lots of sunshine, high cloudbanks will pass through above summit level, provide diffuse light conditions. Winds will be southerly and light. At 2000 m: 7 degrees, at 3000 m: 3 degrees.

Avalanche problems



Danger ratings



Expositions



Tuesday, 20.12.2022

Wednesday: still good visibility in the morning hours, despite some cloudbanks. In the afternoon, visibility will deteriorate, rainfall/snowfall will set in. The snowfall level will lie at 1600 m. Winds will be brisk from S/W. Temperatures will recede: at 2000 m, 0 degrees, at 3000 m, -3 degrees.

Outlook

No significant change.

Avalanche problems



Danger ratings

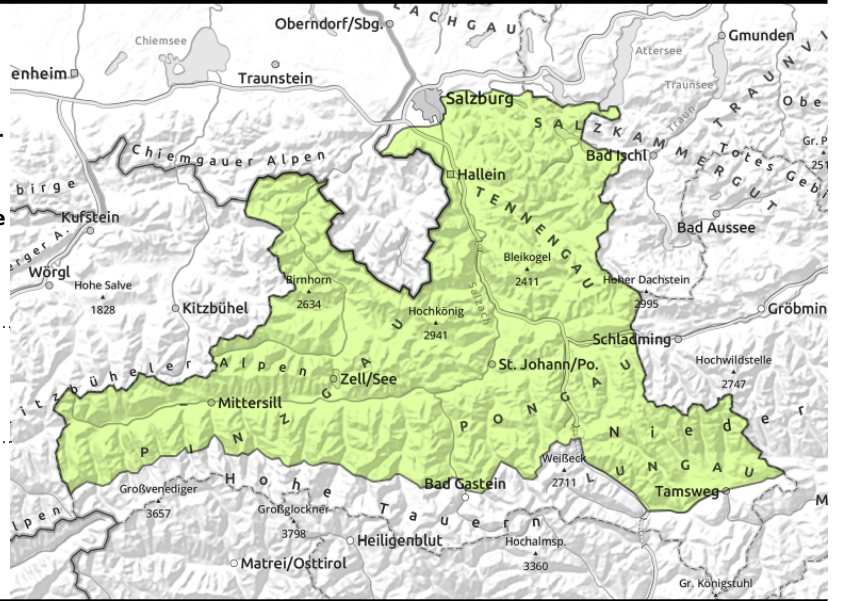


Expositions



Tuesday, 20.12.2022

Chiemgauer Alpen, Heutal, Reiteralpe, Osterhorngruppe, Gamsfeldgruppe, Untersbergstock, Kitzbüheler Alpen, Glemmtal, Dientner Grasberge, Pongauer Grasberge, Tennengebirge, Gosaukamm, Loferer und Leoganger Steinberge, Oberpinzgauer Grasberge, Großvenedigergruppe Nord, Glocknergruppe Nord, Goldberggruppe Nord, Niedere Tauern Nord, Niedere Tauern Alpenhauptkamm, Niedere Tauern Süd, Steinernes Meer, Hochkönig, Hagengebirge, Göllstock



isolated, small, in very steep grassy terrain

Only isolated danger zones

Avalanche danger is LOW. Isolated avalanche prone locations for a slab are found in extremely steep gullies and slopes above 2600 m. The risks of being swept along outweigh those of being buried in snow masses.

In sun-drenched rocky steep terrain, naturally triggered moist, small loose-snow avalanches are possible. In isolated cases, glide-snow avalanches are possible but will remain small, due to the shallow snowpack.

Snowpack structure

Fresh and new snowdrifts from the end of last week have settled thanks to mild temperatures, they are no longer prone to triggering. They blanket the shallow old snowpack which is often expansively metamorphosed (faceted) and weakened by blanketed surface hoar. The weak layers are small. In isolated cases, the entire snowpack glides over the smooth grassy slopes.

Weather

Tuesday: good visibility, lots of sunshine, high cloudbanks will pass through above summit level, provide diffuse light conditions. Winds will be southerly and light. At 2000 m: 7 degrees, at 3000 m: 3 degrees.

Wednesday: still good visibility in the morning hours, despite some cloudbanks. In the afternoon, visibility will deteriorate, rainfall/snowfall will set in. The snowfall level will lie at 1600 m. Winds will be brisk from S/W. Temperatures will recede: at 2000 m, 0 degrees, at 3000 m, -3 degrees.

Outlook

No significant change.

Avalanche problems



Danger ratings



Expositions

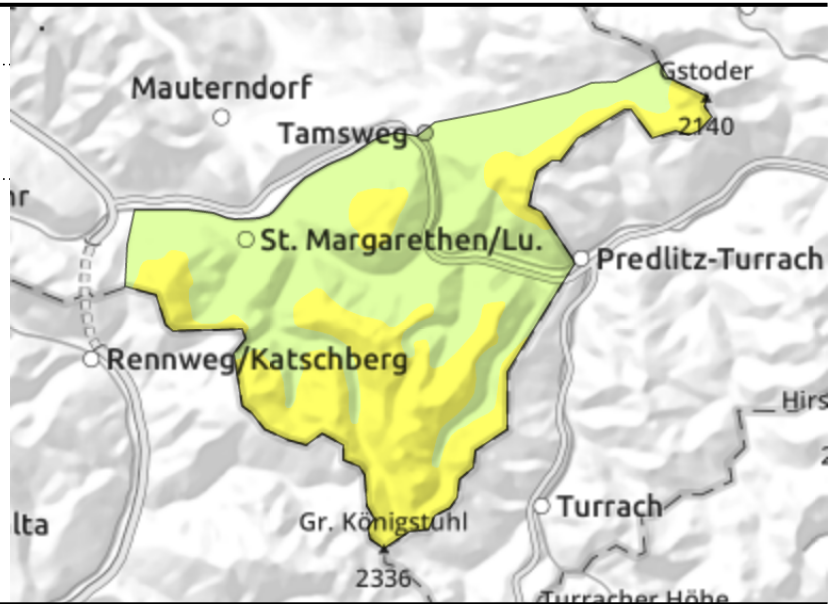


Tuesday, 20.12.2022

Nockberge



near to and distant from ridgelines, in gullies and steep bowls



Older snowdrifts often still triggerable

As of about 2000 m, avalanche danger is MODERATE, below that altitude risks are LOW. Snowdrifts are near to and distant from ridgelines, the frequency of avalanche prone locations increases with ascending altitude. Superficially fractured small slab avalanches can in isolated cases fracture down to more deeply embedded layers inside the snowpack.

Very isolated small naturally triggered glide-snow avalanches are possible in sun-drenched rocky terrain. In isolated cases, also small glide-snow avalanches are possible.

Snowpack structure

The snowdrift masses on east-facing and south-facing slopes are well bonded with the old snowpack, are not likely to trigger. In purely shady terrain the blanketed surface hoar provides a weak layer for slab avalanches.

Due to the warm temperatures, the snowpack has been moistened up to high altitudes. On Tuesday the trend will continue. As a result of increasing moistening of the shallow snowpack, slides of the unbonded snow masses on extremely steep slopes will occur, as well as increasing glide-snow avalanche activity on steep grassy slopes.

Weather

Tuesday: good visibility, lots of sunshine, high cloudbanks will pass through above summit level, provide diffuse light conditions. Winds will be southerly and light. At 2000 m: 7 degrees, at 3000 m: 3 degrees.

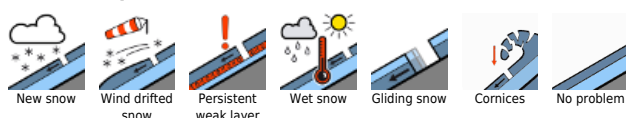
Wednesday: still good visibility in the morning hours, despite some cloudbanks. In the afternoon, visibility will deteriorate, rainfall/snowfall will set in. The snowfall level will lie at 1600 m. Winds will be brisk from S/W. Temperatures will recede: at 2000 m, 0 degrees, at 3000 m, -3 degrees.

Outlook

No significant change.

Translated by Jeffrey McCabe, www.creativtrans.com

Avalanche problems



Danger ratings



Expositions

