

Widespread cloud banks and mild air masses

	<p>2500 m Großvenedigergruppe Alpenhauptkamm, Glocknergruppe Alpenhauptkamm, Goldberggruppe Alpenhauptkamm, Ankogelgruppe, Muhr</p>	
	<p>Chiemgauer Alpen, Heutal, Reiteralpe, Osterhorngruppe, Gamsfeldgruppe, Untersbergstock, Kitzbüheler Alpen, Glemmtal, Dientner Grasberge, Pongauer Grasberge, Tennengebirge, Gosaukamm, Steinernes Meer, Hochkönig, Hagengebirge, Göllstock, Loferer und Leoganger Steinberge, Oberpinzgauer Grasberge, Großvenedigergruppe Nord, Glocknergruppe Nord, Goldberggruppe Nord, Niedere Tauern Nord, Niedere Tauern Alpenhauptkamm, Niedere Tauern Süd</p>	
	<p>2000 m Nockberge</p>	

Avalanche problems



Danger ratings



Expositions



Monday, 19.12.2022

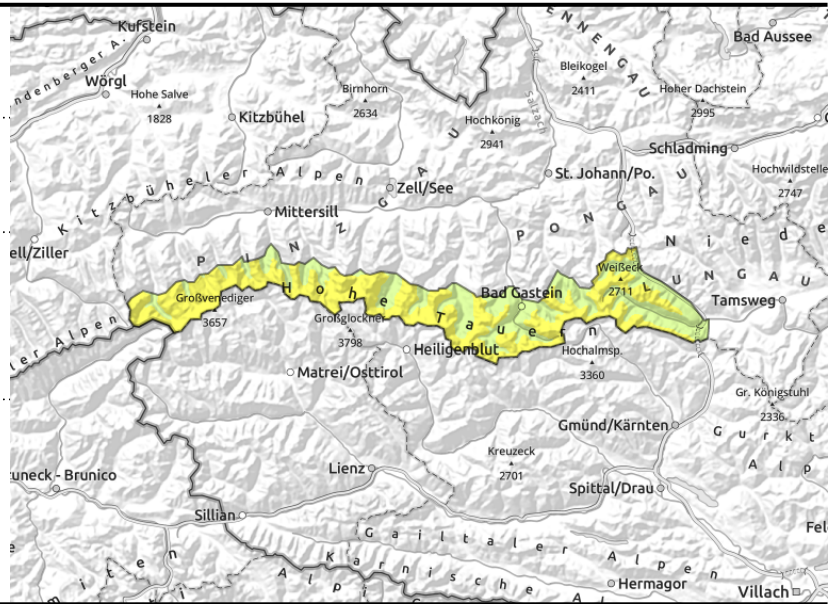
Großvenedigergruppe Alpenhauptkamm, Glocknergruppe Alpenhauptkamm, Goldberggruppe Alpenhauptkamm, Ankogelgruppe, Muhr



unfavourable layering in high alpine regions: faceted, soft layers and often embedded surface hoar



unfavourable layering of old snowpack in high alpine regions: faceted, soft layers and often embedded hoar



Heed snowdrift accumulations near ridgelines

Avalanche danger about 2500 m is MODERATE, below that altitude danger is LOW. Danger stems mostly from fresh snowdrift accumulations, mostly on ridgeline slopes, in gullies and bowls, often easily triggered. The frequency of avalanche prone locations increases with ascending altitude. Slabs are generally small-sized, sometimes medium-size where there is more snow. Fractures down to more deeply embedded layers inside the snowpack will be highly rare. Naturally triggered loose-snow avalanches are possible on sun-drenched rocky steep slopes. In isolated cases, small glide-snow avalanches are possible.

Snowpack structure

The fresh snow from Friday and freshly generated snowdrifts from NW winds have settled, thanks to rising temperatures. This often blanketed an irregular shallow snowpack, particularly in the wind-loaded gullies and bowls in all aspects. On high alpine shady slopes the layering is unfavourable due to a sequence of melt-freeze crusts and faceted crystals inside the snowpack fundament, sometimes with blanketed surface hoar. In those places, older hardened snowpack masses also occur. On steep grasse-covered slopes the entire snowpack glides over the ground.

Weather

During the night, widespread cloud layers will move in. On Monday, visibility will be mostly adequate, the clouds will remain above summit level. Light conditions can be diffuse in the morning hours. No precipitation. Winds will be southerly, possibly reaching 30 km/hr. Temperatures will rise another notch: at 2000 m, 5 degrees; at 3000 m -1 degree.

On Tuesday, good visibility, mostly sunshine. Thin, high-altitude cirrus clouds above the summits will not disturb. Winds will remain light. At 2000 m: 6 degrees; at 3000 m: 3 degrees.

Outlook

No significant change is expected.

Avalanche problems



Danger ratings

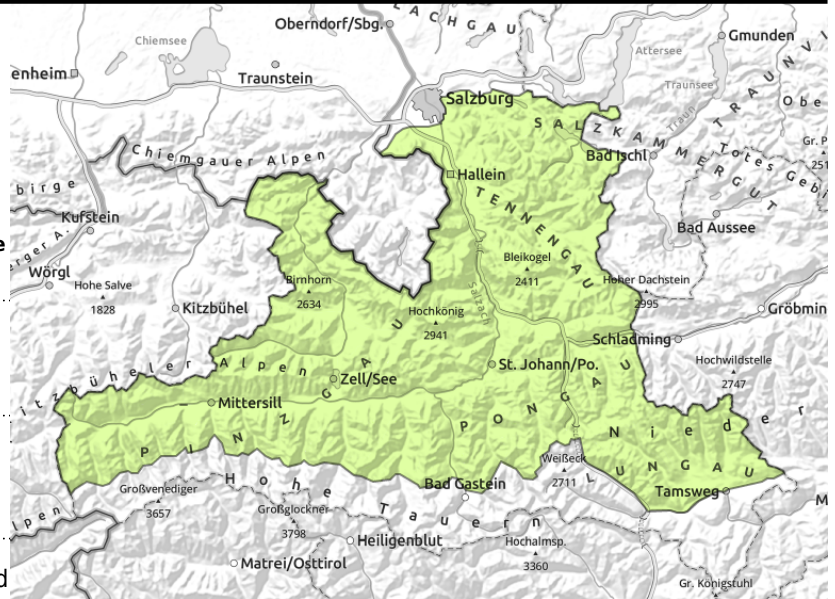


Expositions



Monday, 19.12.2022

Chiemgauer Alpen, Heutal, Reiteralpe, Osterhorngruppe, Gamsfeldgruppe, Untersbergstock, Kitzbüheler Alpen, Glemmtal, Dientner Grasberge, Pongauer Grasberge, Tennengebirge, Gosaukamm, Steinernes Meer, Hochkönig, Hagengebirge, Göllstock, Loferer und Leoganger Steinberge, Oberpinzgauer Grasberge, Großvenedigergruppe Nord, Glocknergruppe Nord, Goldberggruppe Nord, Niedere Tauern Nord, Niedere Tauern Alpenhauptkamm, Niedere Tauern Süd



very isolated, especially near ridgelines, shallow drifts



isolated, in steep grass-covered terrain

Only isolated danger zones

Avalanche danger is LOW. Isolated avalanche prone locations for a slab are found in extremely steep gullies. The risks of being swept along outweigh those of being buried in snow masses.. Glide-snow avalanches are possible but will remain small, due to the shallow snowpack.

Snowpack structure

The fresh snow from Friday and freshly generated snowdrifts from NW winds have settled, thanks to rising temperatures. Bonding of the little fresh snow to the base (melt-freeze crusts or powder), depending on altitude and aspect, is generally sufficient. On high alpine shady slopes the layering is unfavourable due to a sequence of melt-freeze crusts and faceted crystals inside the snowpack fundament, sometimes with blanketed surface hoar. In those places, older hardened snowpack masses also occur. On steep grass-covered slopes the entire snowpack glides over the ground.

Weather

During the night, widespread cloud layers will move in. On Monday, visibility will be mostly adequate, the clouds will remain above summit level. Light conditions can be diffuse in the morning hours. No precipitation. Winds will be southerly, possibly reaching 30 km/hr. Temperatures will rise another notch: at 2000 m, 5 degrees; at 3000 m -1 degree.

On Tuesday, good visibility, mostly sunshine. Thin, high-altitude cirrus clouds above the summits will not disturb. Winds will remain light. At 2000 m: 6 degrees; at 3000 m: 3 degrees.

Outlook

No significant change is expected.

Avalanche problems



Danger ratings

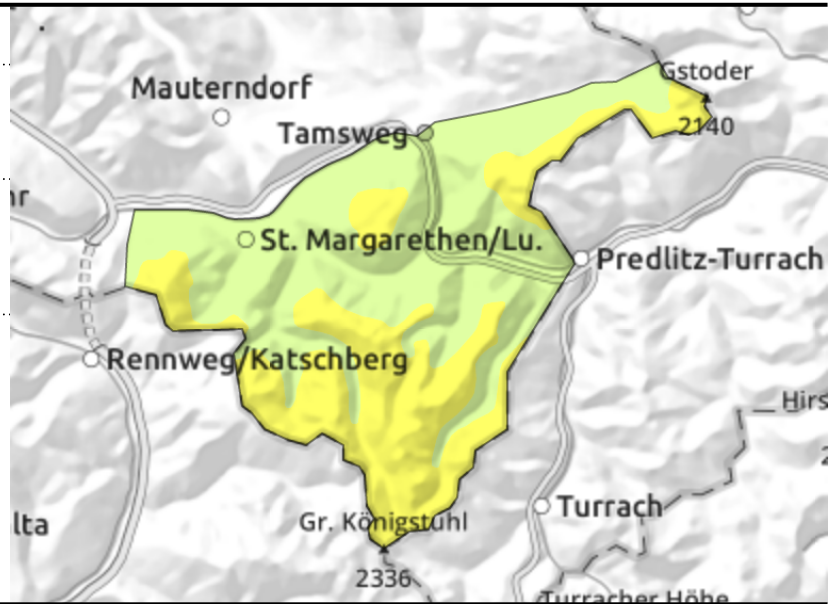
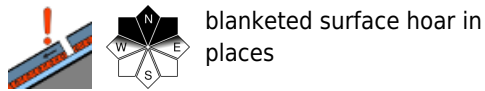
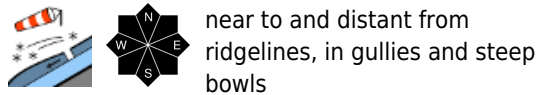


Expositions



Monday, 19.12.2022

Nockberge



Fresh + older snowdrifts

As of about 2000 m, avalanche danger is MODERATE, below that altitude risks are LOW. Snowdrifts are near to and distant from ridgelines, the frequency of avalanche prone locations increases with ascending altitude. Fractures down to more deeply embedded layers inside the snowpack will be rare. Very isolated small naturally triggered glide-snow avalanches are possible.

Snowpack structure

The fresh snow from Friday (10-20 cm) has settled, thanks to rising temperatures. Also the snowdrifts on east-facing and south-facing slopes have settled and gained firmness. New drifts blanket a shallow, often incohesive old snowpack whose surface shows pronounced effects of warmth and strong southerly foehn winds. In purely shady terrain, the blanketed surface hoar is a weak layer for slabs.

Weather

During the night, widespread cloud layers will move in. On Monday, visibility will be mostly adequate, the clouds will remain above summit level. Light conditions can be diffuse in the morning hours. No precipitation. Winds will be southerly, possibly reaching 30 km/hr. Temperatures will rise another notch: at 2000 m, 5 degrees; at 3000 m -1 degree.

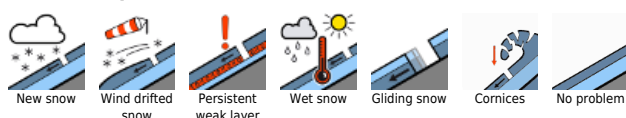
On Tuesday, good visibility, mostly sunshine. Thin, high-altitude cirrus clouds above the summits will not disturb. Winds will remain light. At 2000 m: 6 degrees; at 3000 m: 3 degrees.

Outlook

No significant change is expected.

Translated by Jeffrey McCabe, www.creativtrans.com

Avalanche problems



Danger ratings



Expositions

