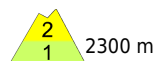
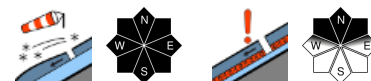


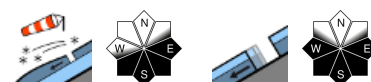
Sunshine, good visibility, little wind



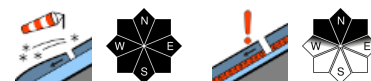
2300 m
Großvenedigergruppe Alpenhauptkamm, Glocknergruppe Alpenhauptkamm, Goldberggruppe Alpenhauptkamm, Ankogelgruppe, Muhr



Chiemgauer Alpen, Heutal, Reiteralpe, Osterhorngruppe, Gamsfeldgruppe, Untersbergstock, Kitzbüheler Alpen, Glemmtal, Dientner Grasberge, Pongauer Grasberge, Tennengebirge, Gosaukamm, Steinernes Meer, Hochkönig, Hagengebirge, Göllstock, Loferer und Leoganger Steinberge, Oberpinzgauer Grasberge, Großvenedigergruppe Nord, Glocknergruppe Nord, Goldberggruppe Nord, Niedere Tauern Nord



2000 m
Niedere Tauern Süd, Nockberge, Niedere Tauern Alpenhauptkamm



Avalanche problems



Danger ratings



Expositions



Sunday, 18.12.2022

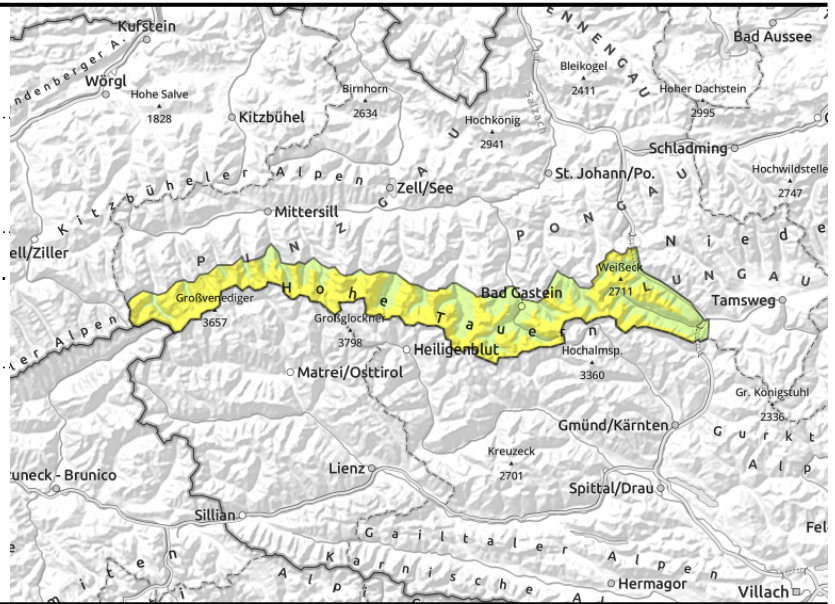
Großvenedigergruppe Alpenhauptkamm, Glocknergruppe Alpenhauptkamm, Goldberggruppe Alpenhauptkamm, Ankogelgruppe, Muhr



fresh thin drifts from NW winds.
hard snowdrifted masses on north-facing slopes



unfavourable layering of old snowpack in high alpine regions, soft faceted layers, often embedded hoar



Snowdrift accumulations steep ridgeline terrain

Avalanche danger above about 2300 m is MODERATE, below that altitude danger is LOW. Danger stems mostly from fresh snowdrift accumulations, mostly on ridgeline slopes, in gullies and bowls, often easily triggered. The frequency of avalanche prone locations increases with ascending altitude. Slabs are generally small-sized, sometimes medium-size where there is more snow. Fractures down to more deeply embedded layers inside the snowpack will be highly rare. Naturally triggered loose-snow avalanches are possible on sun-bathed rocky steep slopes. In isolated cases, small glide-snow avalanches are possible.

Snowpack structure

Maximum 10-15 cm of fresh snow fell, up to 25 cm in the Goldberg and Glockner Massifs, now blanketing in irregular and shallow old snowpack. Bonding is mostly unfavourable. Strong NW winds generated fresh snowdrifts, deposited them mostly on east-facing and south-facing slopes and in gullies. The recent warmth has settled the old snow mostly in wind-loaded gullies and bowls of all aspects. On high-alpine shady slopes the layering is unfavourable: a sequence of melt-freeze crusts and faceted crystals and, in isolated cases, embedded hoar. On steep grassy slopes the snowpack glides over the ground.

Weather

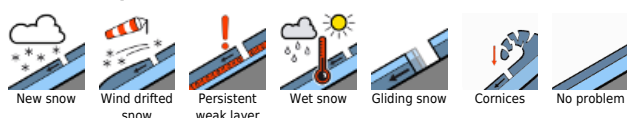
On Sunday, top visibility, sunshine. In the afternoon thin clouds will move in. Winds will remain light from the south. Temperatures will rise: at 2000 m, -1 degree; at 3000 m, -7 degrees.

On Monday, adequate visibility, most of the clouds will be above summit level. Light conditions might be diffuse in the morning. No precipitation. Winds from the south: 30 - 40 km/hr. Temperatures will continue to rise. At 2000 m, +5 degrees; at 3000 m, -1 degree.

Outlook

As a result of intensifying southerly wind, fresh drifts can accumulate on north-facing slopes in high alpine regions. Elsewhere, trigger-sensitivity will recede. At low and intermediate altitudes the snow will become moist.

Avalanche problems



Danger ratings

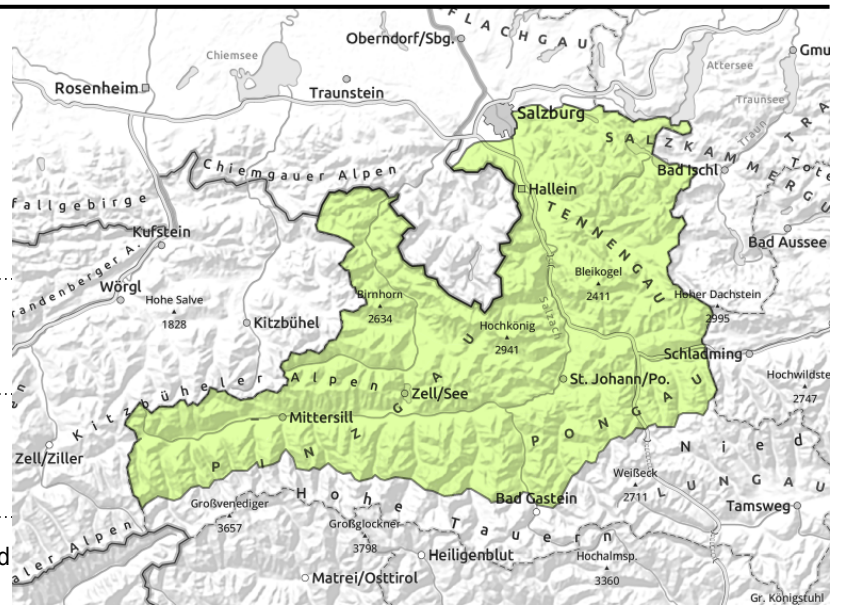


Expositions



Sunday, 18.12.2022

Chiemgauer Alpen, Heutal, Reiteralpe, Osterhorngruppe, Gamsfeldgruppe, Untersbergstock, Kitzbüheler Alpen, Glemmtal, Dientner Grasberge, Pongauer Grasberge, Tennengebirge, Gosaukamm, Steinernes Meer, Hochkönig, Hagengebirge, Göllstock, Loferer und Leoganger Steinberge, Oberpinzgauer Grasberge, Großvenedigergruppe Nord, Glocknergruppe Nord, Goldberggruppe Nord, Niedere Tauern Nord



very isolated, especially near ridgelines



isolated, in steep grass-covered terrain

Only isolated danger zones

Avalanche danger is LOW. Isolated avalanche prone locations for a slab are found in extremely steep gullies. The risks of being swept along outweigh those of being buried in snow masses. Glide-snow avalanches are possible but will remain small, due to the shallow snowpack.

Snowpack structure

5-15 cm of fresh snow blanketed the shallow old snowpack, bonding is generally adequate, only weak on isolated steep sunny slopes (cold on warm). In high alpine ridgeline terrain, NW winds have generated thin drifts. The fundament is often expansively metamorphosed or has hoar embedded. The weak layers are not extensive, not easy to trigger. In isolated cases the entire snowpack glides over the ground on steep grassy slopes.

Weather

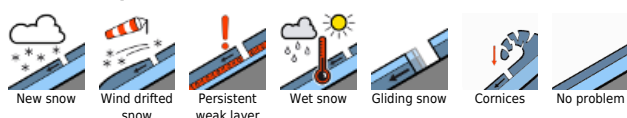
On Sunday, top visibility, sunshine. In the afternoon thin clouds will move in. Winds will remain light from the south. Temperatures will rise: at 2000 m, -1 degree; at 3000 m, -7 degrees.

On Monday, adequate visibility, most of the clouds will be above summit level. Light conditions might be diffuse in the morning. No precipitation. Winds from the south: 30 - 40 km/hr. Temperatures will continue to rise. At 2000 m, +5 degrees; at 3000 m, -1 degree.

Outlook

Low avalanche danger also on Monday, only few avalanche prone locations. At low and intermediate altitudes the snow will become moist.

Avalanche problems



Danger ratings



Expositions



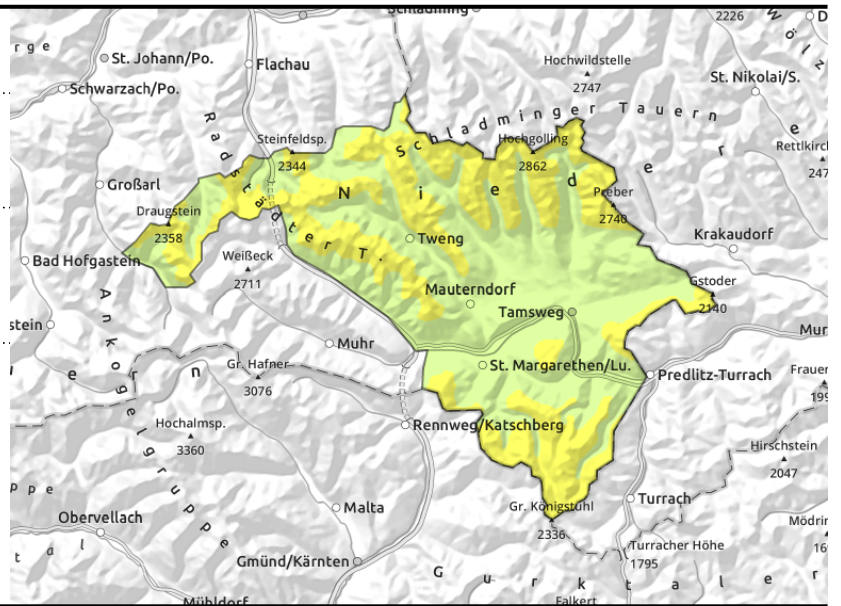
Sunday, 18.12.2022

Niedere Tauern Süd, Nockberge, Niedere Tauern Alpenhauptkamm



near to and distant from ridgelines, in gullies and steep bowls

blanketed surface hoar in places



Fresh + older snowdrifts

As of about 2000 m, avalanche danger is MODERATE, below that altitude risks are LOW. Snowdrifts are near to and distant from ridgelines, the frequency of avalanche prone locations increases with ascending altitude. Fractures down to more deeply embedded layers inside the snowpack will be rare. Very isolated small naturally triggered glide-snow avalanches are possible.

Snowpack structure

5-15 cm of fresh snow blanketed the shallow old snowpack, bonding is generally adequate, only weak on isolated steep sunny slopes (cold on warm). In high alpine ridgeline terrain, NW winds have generated thin drifts. The fundament is often expansively metamorphosed or has hoar embedded. The weak layers are not extensive, not easy to trigger. In isolated cases the entire snowpack glides over the ground on steep grassy slopes.

Weather

On Sunday, top visibility, sunshine. In the afternoon thin clouds will move in. Winds will remain light from the south. Temperatures will rise: at 2000 m, -1 degree; at 3000 m, -7 degrees.

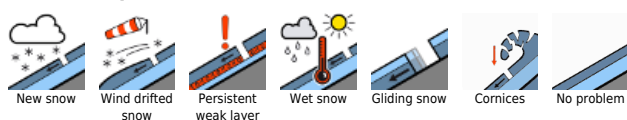
On Monday, adequate visibility, most of the clouds will be above summit level. Light conditions might be diffuse in the morning. No precipitation. Winds from the south: 30 - 40 km/hr. Temperatures will continue to rise. At 2000 m, +5 degrees; at 3000 m, -1 degree.

Outlook

As a result of intensifying southerly wind, fresh drifts can accumulate on north-facing slopes in high alpine regions. Elsewhere, trigger-sensitivity will recede. At low and intermediate altitudes the snow will become moist.

Translated by Jeffrey McCabe, www.creativtrans.com

Avalanche problems



Danger ratings



Expositions

