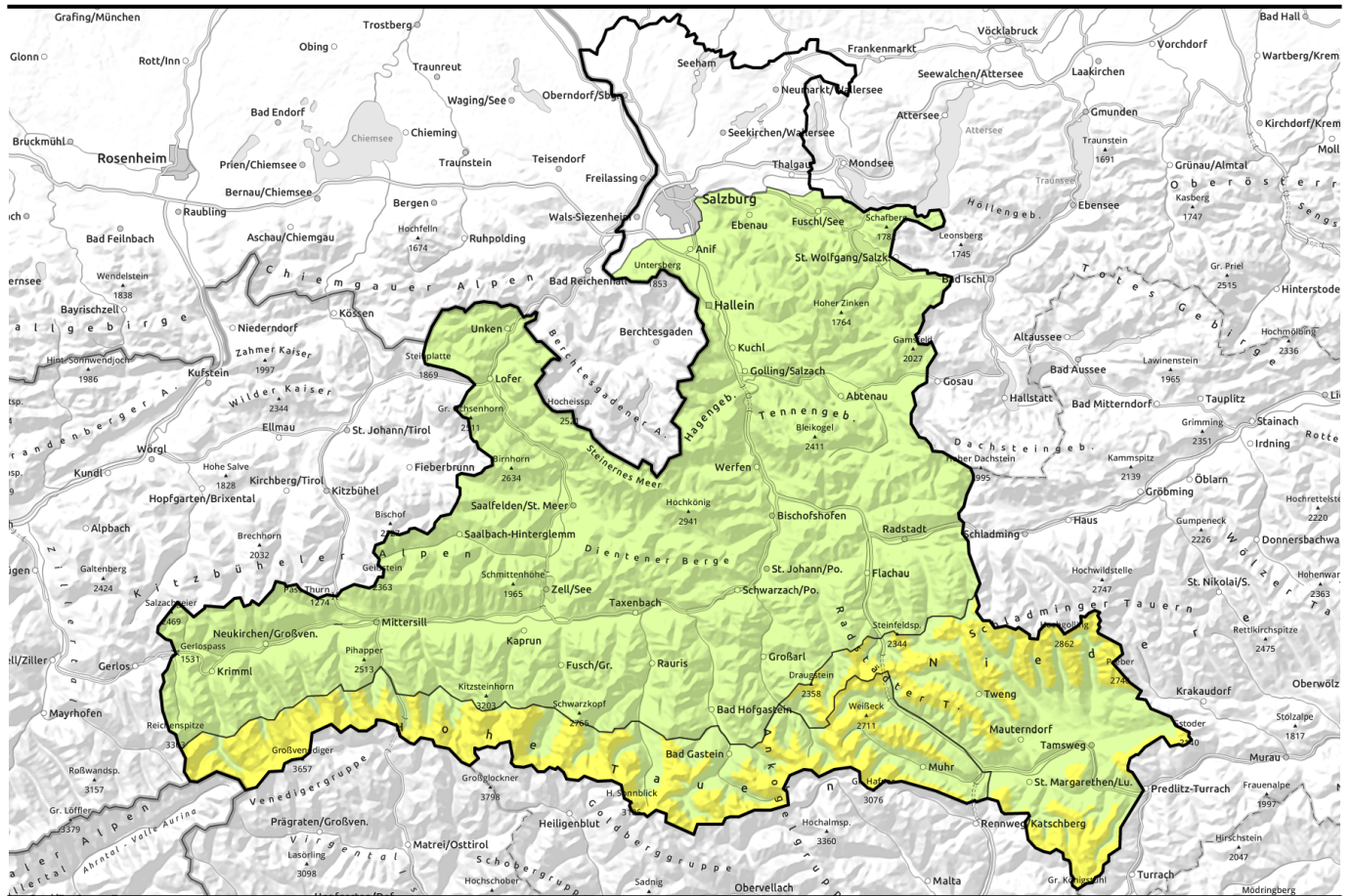


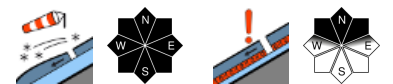
Saturday, 17.12.2022



Still not enough snow for many ski tours



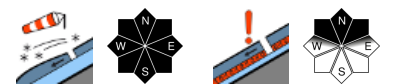
2300 m
Großvenedigergruppe Alpenhauptkamm, Glocknergruppe Alpenhauptkamm, Goldberggruppe Alpenhauptkamm, Ankogelgruppe, Muhr



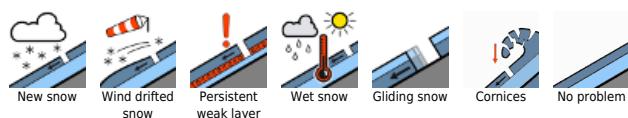
Chiemgauer Alpen, Heutal, Reiteralpe, Osterhorngruppe, Gamsfeldgruppe, Untersbergstock, Kitzbüheler Alpen, Glemmtal, Dientner Grasberge, Pongauer Grasberge, Tennengebirge, Gosaukamm, Steinernes Meer, Hochkönig, Hagengebirge, Göllstock, Loferer und Leoganger Steinberge, Oberpinzgauer Grasberge, Großvenedigergruppe Nord, Glocknergruppe Nord, Goldberggruppe Nord, Niedere Tauern Nord



2000 m
Niedere Tauern Süd, Nockberge, Niedere Tauern Alpenhauptkamm



Avalanche problems



Danger ratings

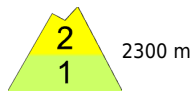


Expositions



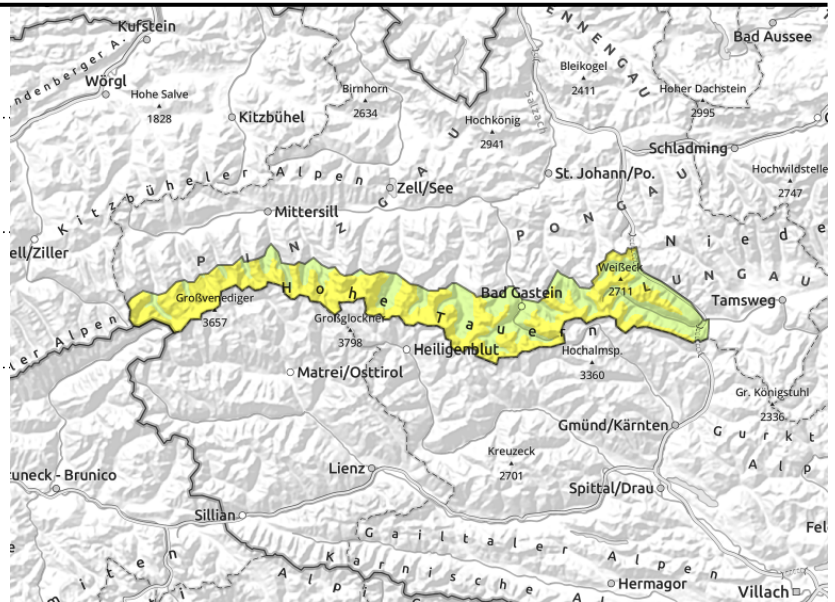
Saturday, 17.12.2022

Großvenedigergruppe Alpenhauptkamm,
Glocknergruppe Alpenhauptkamm, Goldberggruppe
Alpenhauptkamm, Ankogelgruppe, Muhr



fresh shallow drifts from NW winds. hard drifts on north-facing slopes

unfavourable layering of old snowpack in high alpine regions, soft layers, often embedded hoar



Snowdrift accumulations in many aspects

Avalanche danger above about 2300 m is MODERATE, below that altitude danger is LOW. On north-facing steep slopes (esp. gullies and bowls) the fresh snowdrifts require attentiveness, they are often easily triggered due to the shallowness of the snowpack. Slab released mostly small-to-medium. The snow plates often fracture, but fractures down to deeper layers will occur only in isolated cases.

Snowpack structure

Maximum 10-15 cm of fresh snow blanketed a shallow old snowpack which prior to the snowfall was sticky or moist up to 2600 m due to rain. Strong NW winds deposited fresh shallow drifts mostly to E/S slopes, massing them in gullies. The settled old snow (due to the warmth) is concentrated in wind-loaded gullies and bowls of all aspects. On high alpine shady slopes the layering is unfavourable due to a sequence of melt-freeze crusts and faceted crystals inside the fundament, in some cases with embedded hoar. On steep grassy slopes the snowpack glides over the ground in some places.

Weather

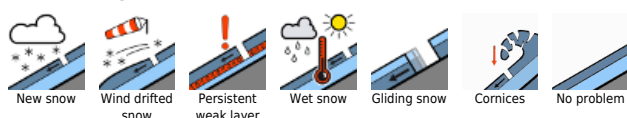
On Saturday the light snowfall will end, later on clouds will move in, sunshine is expected in the afternoon. In the Tauern the NW winds will reach 50 km/hr. At 2000 m; -11 degrees; at 3000 m; -14 degrees.

On Sunday, top visibility, great sunshine, light winds from the south, rising temperatures. At 2000 m; 0 degrees; at 3000 m; -7 degrees.

Outlook

On Sunday, small naturally triggered loose-snow avalanches are possible in sun-bathed rocky terrain. On sunny slopes the snow will become sticky up to intermediate altitude. Moderate snowdrift problem at high and high alpine altitudes.

Avalanche problems



Danger ratings

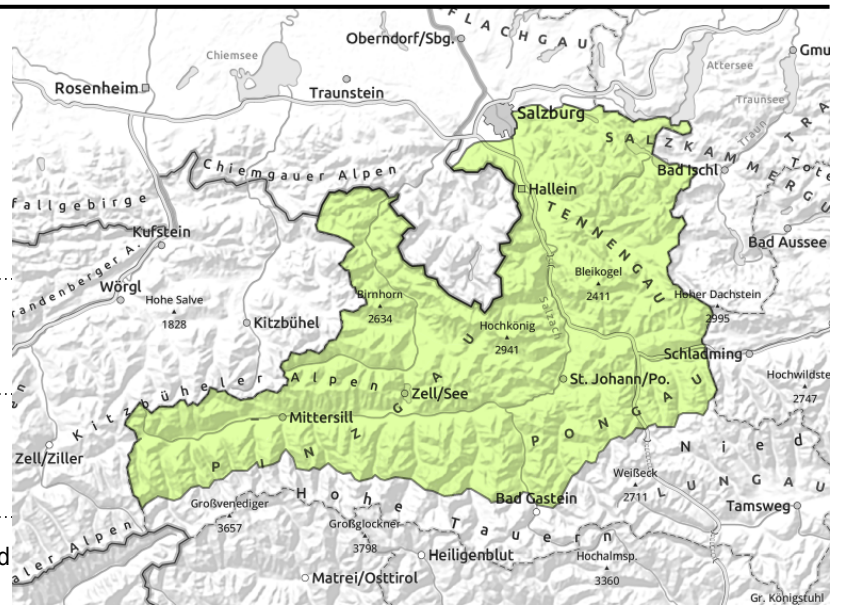


Expositions



Saturday, 17.12.2022

Chiemgauer Alpen, Heutal, Reiteralpe, Osterhorngruppe, Gamsfeldgruppe, Untersbergstock, Kitzbüheler Alpen, Glemmtal, Dientner Grasberge, Pongauer Grasberge, Tennengebirge, Gosaukamm, Steinernes Meer, Hochkönig, Hagengebirge, Göllstock, Loferer und Leoganger Steinberge, Oberpinzgauer Grasberge, Großvenedigergruppe Nord, Glocknergruppe Nord, Goldberggruppe Nord, Niedere Tauern Nord



very isolated, especially near ridgelines



isolated, in steep grass-covered terrain

Only isolated danger zones

Avalanche danger is LOW. Isolated avalanche prone locations for a slab are found in extremely steep gullies. The risks of being swept along outweigh those of being buried in snow masses. Glide-snow avalanches will remain small, due to the shallow snowpack.

Snowpack structure

5-10 cm of fresh snow blanketed the shallow old snowpack, well settled due to the warmth. In high alpine regions, small fresh ridgeline snowdrifts were deposited by NW winds. The fundament is often expansively metamorphosed or has hoar embedded. The weak layers are not extensive, not easy to trigger. In isolated cases the entire snowpack glides over the ground on steep grassy slopes.

Weather

On Saturday the light snowfall will end, later on clouds will move in, sunshine is expected in the afternoon. In the Tauern the NW winds will reach 50 km/hr. At 2000 m; -11 degrees; at 3000 m; -14 degrees.

On Sunday, top visibility, great sunshine, light winds from the south, rising temperatures. At 2000 m; 0 degrees; at 3000 m; -7 degrees.

Outlook

On Sunday, small naturally triggered loose-snow avalanches are possible in sun-bathed rocky terrain. On sunny slopes the snow will become sticky up to intermediate altitude. All in all, little change is expected.

Avalanche problems



Danger ratings



Expositions



Saturday, 17.12.2022

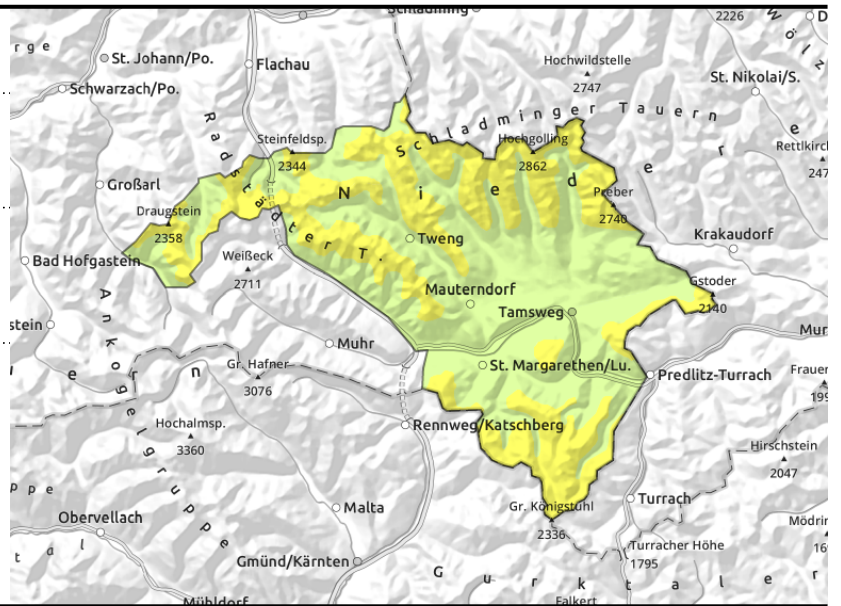
Niedere Tauern Süd, Nockberge, Niedere Tauern Alpenhauptkamm



near to and distant from ridgelines, in gullies and steep bowls



blanketed surface hoar in places



Fresh + older snowdrifts

As of about 2000 m, avalanche danger is MODERATE, below that altitude risks are LOW. Snowdrifts are near to and distant from ridgelines, the frequency of avalanche prone locations increases with ascending altitude. Slabs are generally small-to-medium sized, the plates often break, but rarely down to deep layers. Mostly large additional loading (or very unfavourable spot in the terrain, e.g. transitions from shallow to more snow in a gully) necessary to trigger a release. Very isolated small naturally triggered glide-snow avalanches are possible.

Snowpack structure

Maximum 10-15 cm of fresh snow blanketed a shallow old snowpack which prior to the snowfall was sticky or moist up to 2600 m due to rain. Strong NW winds deposited fresh shallow drifts mostly to E/S slopes, massing them in gullies. The settled old snow (due to the warmth) is concentrated in wind-loaded gullies and bowls of all aspects. On high alpine shady slopes the layering is unfavourable due to a sequence of melt-freeze crusts and faceted crystals inside the fundament, in some cases with embedded hoar. On steep grassy slopes the snowpack glides over the ground in some places.

Weather

On Saturday the light snowfall will end, later on clouds will move in, sunshine is expected in the afternoon. In the Tauern the NW winds will reach 50 km/hr. At 2000 m; -11 degrees; at 3000 m; -14 degrees.

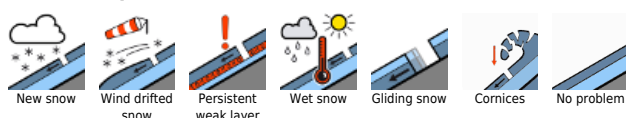
On Sunday, top visibility, great sunshine, light winds from the south, rising temperatures. At 2000 m; 0 degrees; at 3000 m; -7 degrees.

Outlook

On Sunday, small naturally triggered loose-snow avalanches are possible in sun-bathed rocky terrain. On sunny slopes the snow will become sticky up to intermediate altitude. Moderate snowdrift problem at high and high alpine altitudes.

Translated by Jeffrey McCabe, www.creativtrans.com

Avalanche problems



Danger ratings



Expositions

