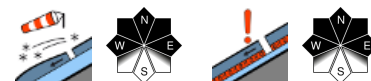


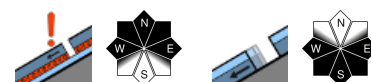
Still not enough snow for many ski tours



Großvenedigergruppe Alpenhauptkamm, Glocknergruppe Alpenhauptkamm, Goldberggruppe Alpenhauptkamm, Ankogelgruppe, Muhr



Chiemgauer Alpen, Heutal, Reiteralpe, Osterhorngruppe, Gamsfeldgruppe, Untersbergstock, Kitzbüheler Alpen, Glemmtal, Dientner Grasberge, Pongauer Grasberge, Tennengebirge, Gosaukamm, Steinernes Meer, Hochkönig, Hagengebirge, Göllstock, Loferer und Leoganger Steinberge, Oberpinzgauer Grasberge, Großvenedigergruppe Nord, Glocknergruppe Nord, Goldberggruppe Nord, Niedere Tauern Nord, Niedere Tauern Alpenhauptkamm, Niedere Tauern Süd, Nockberge



Avalanche problems



Danger ratings



Expositions



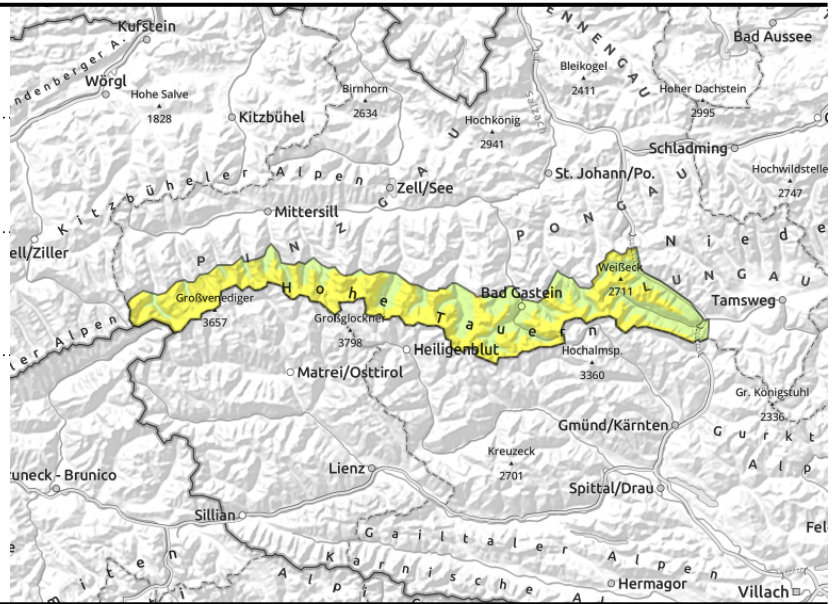
Friday, 16.12.2022

Großvenedigergruppe Alpenhauptkamm,
Glocknergruppe Alpenhauptkamm, Goldberggruppe
Alpenhauptkamm, Ankogelgruppe, Muhr



southerly foehn wind
generating snowdrifts

unfavourable layering of
shallow old snowpack, often
embedded hoar



Southerly foehn wind is generating drifts on north-facing slopes

Avalanche danger above about 2300 m is MODERATE, below that altitude danger is LOW. On north-facing steep slopes (esp. gullies and bowls) the fresh snowdrifts require attentiveness, they are often easily triggered due to the shallowness of the snowpack. The snow plates often fracture, but fractures down to deeper layers will occur only in isolated cases.

Snowpack structure

Wind exposed terrain is utterly bare, the snow is mostly in gullies and bowls. The snow cover was able to settle in the last couple of days. At high and high alpine altitudes on shady slopes the snowpack layering is often unfavourable, mostly in the lower part (of the still shallow snowpack) is a sequence of melt-freeze crusts and faceted crystals. Atop of that, fresh snowdrift accumulations on the latest batch of new snow.

Weather

The peaks will be shrouded in clouds on Friday, visibility often limited, intermittent light snowfall, increasingly slightly in the afternoon. Light NW winds will be blowing, in the Tauern also southerly to start with. At 2000 m, dropping from -2 to -7 degrees; at 3000 m, -7 degrees.

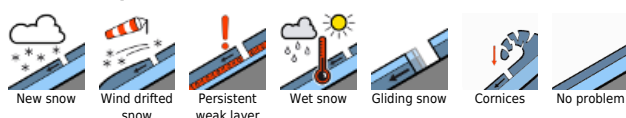
On Friday night, about 10-15 m of fresh cold snowfall is anticipated.

On Saturday the snowfall will taper off. During the daytime hours clouds will disperse, sunshine will be frequent during the afternoon. In the Tauern, the NW winds will reach speeds of 50 km/hr. At 2000 m, -11 degrees; at 3000 m, -14 degrees.

Outlook

On Friday night, about 15 cm of fresh snow is anticipated, plus NW winds on Friday. Slight increase in avalanche danger levels.

Avalanche problems



Danger ratings

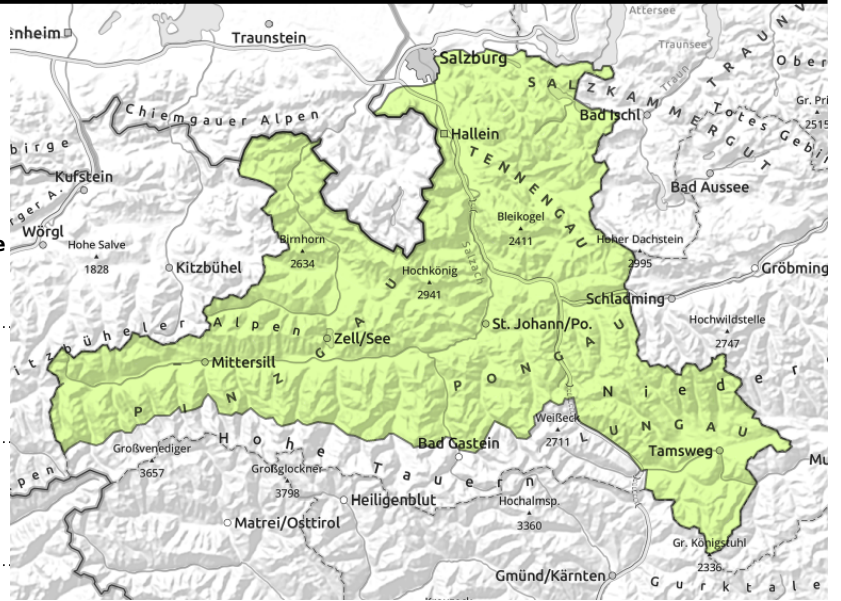


Expositions



Friday, 16.12.2022

Chiemgauer Alpen, Heutal, Reiteralpe, Osterhorngruppe, Gamsfeldgruppe, Untersbergstock, Kitzbüheler Alpen, Glemmtal, Dientner Grasberge, Pongauer Grasberge, Tennengebirge, Gosaukamm, Steinernes Meer, Hochkönig, Hagengebirge, Göllstock, Loferer und Leoganger Steinberge, Oberpinzgauer Grasberge, Großvenedigergruppe Nord, Glocknergruppe Nord, Goldberggruppe Nord, Niedere Tauern Nord, Niedere Tauern Alpenhauptkamm, Niedere Tauern Süd, Nockberge



isolated avalanche prone locations, esp. on shady slopes



isolated, small, on extremely steep grassy slopes

Only isolated avalanche prone locations

Avalanche danger is LOW, isolated avalanche prone locations for slab releases are found mostly in very-to-extremely steep gullies. The risks of being swept along and forced to take a fall outweigh those of being buried in snow masses. Glide-cracks yawn, but glide-snow avalanches remain the exception due to the shallowness of the snowpack.

Snowpack structure

The snowpack is shallow enough to settle over the last couple of days. On Thursday night and during the day on Friday, a few centimetres of fresh snow is anticipated. The old snowpack is expansively metamorphosed (faceted) to some extent, or there is surface hoar. Weak layers are small, however, relatively difficult to trigger.

Weather

The peaks will be shrouded in clouds on Friday, visibility often limited, intermittent light snowfall, increasingly slightly in the afternoon. Light NW winds will be blowing, in the Tauern also southerly to start with. At 2000 m, dropping from -2 to -7 degrees; at 3000 m, -7 degrees. On Friday night, 10-15 cm of fresh cold snow is anticipated. On Saturday the snowfall will taper off. During the daytime hours clouds will disperse, sunshine will be frequent during the afternoon. In the Tauern, the NW winds will reach speeds of 50 km/hr. At 2000 m, -11 degrees; at 3000 m, -14 degrees.

Outlook

On Friday night, about 15 cm of fresh snow is anticipated. On Friday, NW winds will intensify. Slight increase in avalanche danger levels.

Translated by Jeffrey McCabe, www.creativtrans.com

Avalanche problems



Danger ratings



Expositions

