

Still too little snow for ski tours

	2000 m	Großenedigergruppe Alpenhauptkamm, Glocknergruppe Alpenhauptkamm, Goldberggruppe Alpenhauptkamm				
	forestline	Nockberge, Niedere Tauern Süd, Ankogelgruppe, Muhr, Niedere Tauern Alpenhauptkamm				
		Chiemgauer Alpen, Heutal, Reiteralpe, Osterhorngruppe, Gamsfeldgruppe, Untersbergstock, Kitzbüheler Alpen, Glemmtal, Dientner Grasberge, Pongauer Grasberge				
	2000 m	Loferer und Leoganger Steinberge, Steinernes Meer, Hochkönig, Hagengebirge, Göllstock, Tennengebirge, Gosaukamm, Oberpinzgauer Grasberge, Großenedigergruppe Nord, Glocknergruppe Nord, Goldberggruppe Nord, Niedere Tauern Nord				

Avalanche problems



Danger ratings

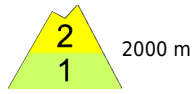


Expositions



Thursday, 15.12.2022

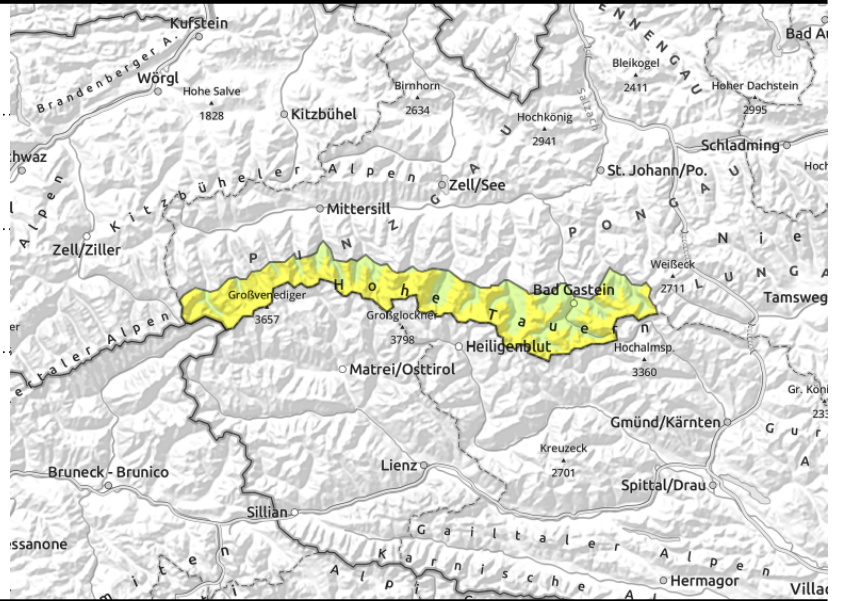
**Großvenedigergruppe Alpenhauptkamm,
Glocknergruppe Alpenhauptkamm, Goldberggruppe
Alpenhauptkamm**



southerly foehn wind
generating snowdrifts



unfavourable layering of
shallow old snowpack, often
embedded hoar



Southerly foehn wind is generating drifts on north-facing slopes

Avalanche danger above about 2000 m is MODERATE, below that altitude danger is LOW. On north-facing steep slopes (esp. gullies and bowls) the fresh snowdrifts require attentiveness, they are often easily triggered. Southerly foehn wind will intensify on Thursday, generate fresh drifts and deposit them both near to and distant from ridgelines. Slab releases will generally remain small sized (medium-sized at most) due to the shallow snowpack. Fractures down to deeper layers will occur only in isolated cases.

Snowpack structure

Wind exposed terrain is utterly bare, the snow is mostly in gullies and bowls. The snow cover was able to settle on Wednesday. At high and high alpine altitudes on shady slopes the snowpack layering is often unfavourable, mostly in the lower part (of the still shallow snowpack) is a sequence of melt-freeze crusts and faceted crystals. Atop of that, fresh snowdrift accumulations on the latest batch of new snow.

Weather

On Thursday the day will start with good visibility and lots of sun. During the afternoon, intermediate altitude clouds will move in, generate diffuse light conditions. Southerly foehn will intensify, reach speeds of 80 km/hr by evening. At 2000 m: 0 degrees.

On Friday, the peaks will often be shrouded in clouds, a bit of snowfall is possible. A moderately strong westerly wind will be blowing. At 2000 m: -2 degrees; at 3000 m: -6 degrees. Southerly winds will slacken off significantly by midday.

Outlook

Little change is anticipated. Over the next few days, only a few centimetres of snowfall is expected.

Avalanche problems



Danger ratings



Expositions



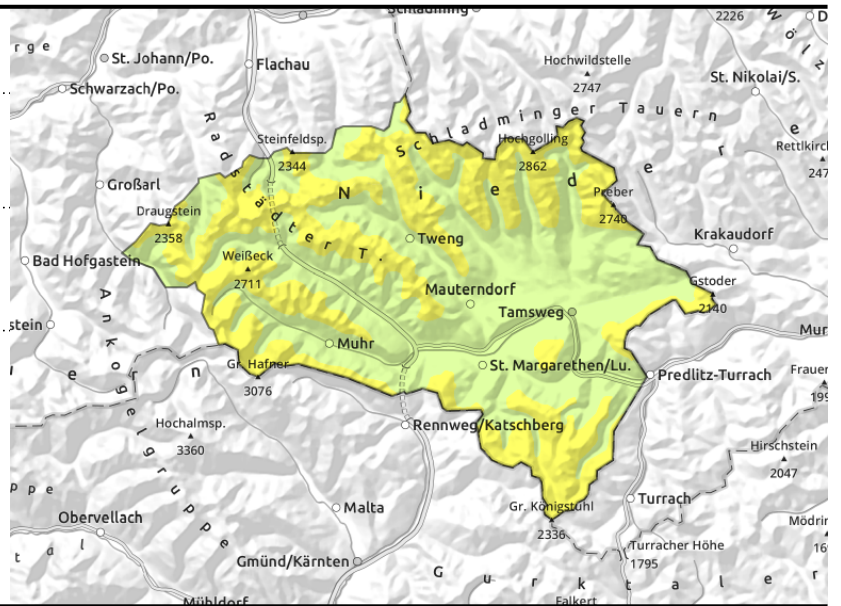
Thursday, 15.12.2022

Nockberge, Niedere Tauern Süd, Ankogelgruppe, Muhr, Niedere Tauern Alpenhauptkamm

forestline

isolated avalanche prone locations, esp. on shady slopes

snowdrift masses are prone to triggering, should be circumvented



Some snowdrift accumulations, small danger zones in the old snow

Starting at the timberline, avalanche danger is MODERATE, below that altitude danger is LOW. Two sources of risk for winter sports enthusiasts: easily recognized are the snowdrifts on north-facing and east-facing slopes. A small slab can be unleashed in steep terrain (as of 35°) even by one sole skier. Second: the old snowpack is of poor quality, particularly on shady slopes. A slab can grow to medium size.

Glide cracks can open, but the snowpack is too shallow for major releases.

Snowpack structure

The overall snow depths lie between 20 and 60 cm. There is often fine powder snow, but in places the terrain is windblown bare.

The snowpack layering is currently unfavourable. The snow is often expansively metamorphosed (faceted) down to the ground, with embedded melt-freeze crusts. At forest edges and in wind-protected terrain, the surface hoar has often been blanketed by fresh snow.

Weather

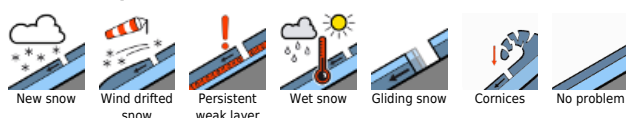
On Thursday, good visibility, frequent sunshine. Towards evening, clouds will move in. Winds will be brisk from the southeast. At 2000 m: -2 degrees.

On Friday, cloudy skies, the peaks often veiled. Winds will be light. At 2000 m: -3 degrees.

Outlook

Little change is anticipated. Over the next few days, only a few centimetres of snowfall is expected.

Avalanche problems



Danger ratings



Expositions



Thursday, 15.12.2022

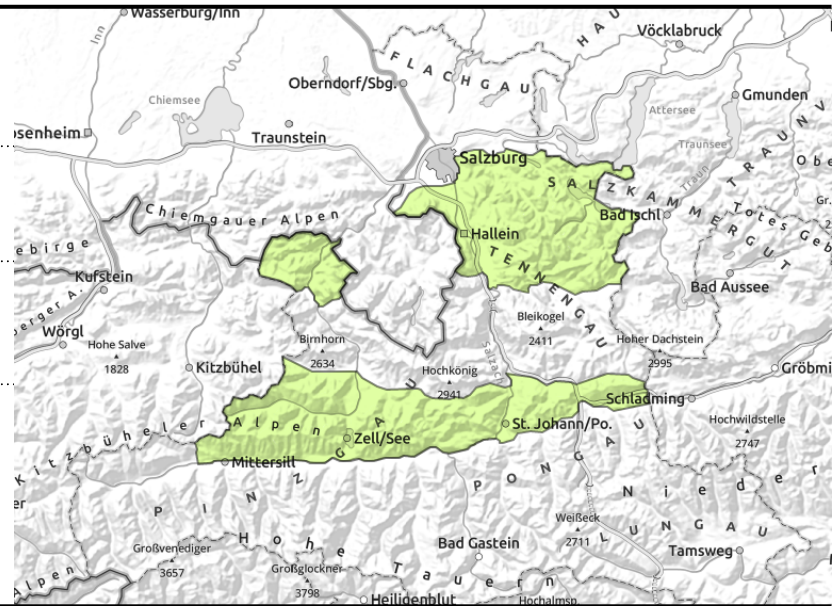
Chiemgauer Alpen, Heutal, Reiteralpe, Osterhorngruppe, Gamsfeldgruppe, Untersbergstock, Kitzbüheler Alpen, Glemmtal, Dientner Grasberge, Pongauer Grasberge



very isolated in extremely steep grassy terrain



very isolated



Only isolated danger zones

Avalanche danger is LOW. Isolated avalanche prone locations for a slab are found in extremely steep gullies. The risks of being swept along outweigh those of being buried in snow masses.. Glide-snow avalanches will remain small, due to the shallow snowpack.

Snowpack structure

The snowpack is shallow, was able to settle on Wednesday. Powder snow can still be found. The old snowpack is expansively metamorphosed (faceted) in some places, or there is surface hoar embedded. The weak layers are small, however, and not easily disturbed.

Weather

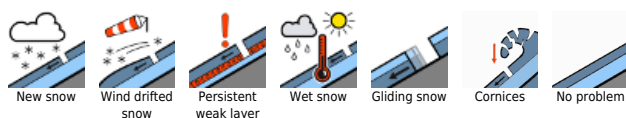
On Thursday the peaks of the Northern Alps will be wreathed in heavy clouds, visibility will improve only minimally over the course of the day. In the grassy mountains the day will start with good visibility and lots of sunshine, clouds will move in during the afternoon, generate diffuse light. A light to moderate SW wind will be blowing. At 2000 m: 0 degrees.

On Friday, peaks often shrouded in clouds, visibility often limited. Intermittent snowfall in the Northern Alps to start with. In the afternoon, the snowfall will become more frequent further south. A moderate westerly wind will be blowing. At 2000 m: -3 degrees.

Outlook

Little change is anticipated. Over the next few days, only a few centimetres of snowfall is expected.

Avalanche problems



Danger ratings

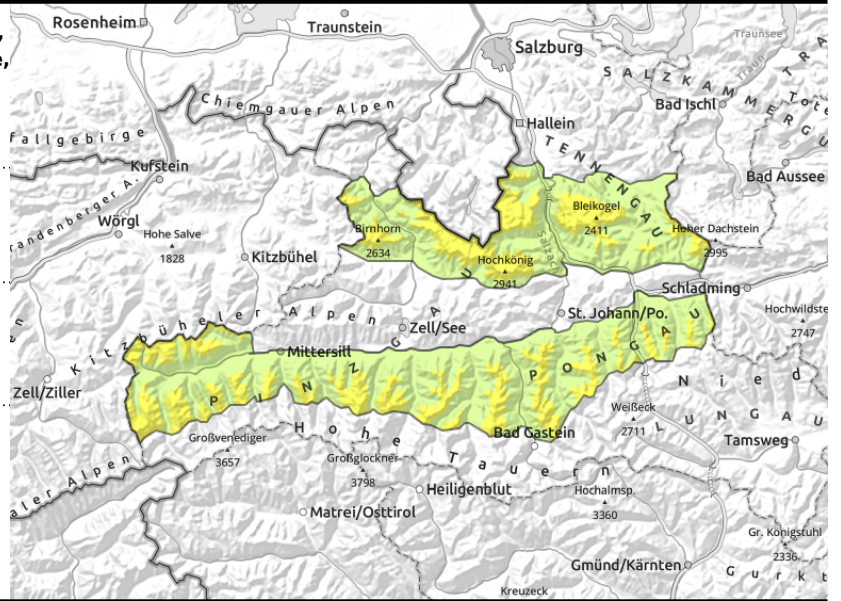
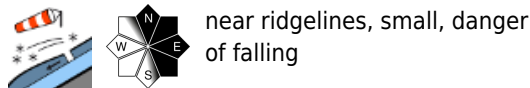
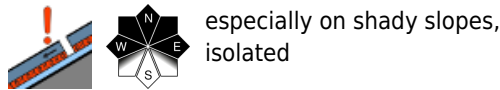


Expositions



Thursday, 15.12.2022

Loferer und Leoganger Steinberge, Steinernes Meer, Hochkönig, Hagengebirge, Göllstock, Tennengebirge, Gosaukamm, Oberpinzgauer Grasberge, Großvenedigergruppe Nord, Glocknergruppe Nord, Goldberggruppe Nord, Niedere Tauern Nord



Some snowdrifts, small danger zones in the old snow

As of about 2000 m, avalanche danger is MODERATE, below that altitude risks are LOW. Two sources of risk for winter sports enthusiasts: easily recognized are the snowdrifts on north-facing and east-facing slopes. A small slab can be unleashed here in steep terrain (as of 35°) even by one sole skier. Second: the old snowpack is of poor quality, particularly on shady slopes. A slab can grow to medium size.

Isolated glide cracks appear. Due to the shallow snowpack, glide-snow avalanches will be small.

Snowpack structure

On Wednesday the snowpack was able to settle due to the higher temperatures, powder snow is still to be found. The layers of the old snowpack are slowly bonding. But in some high altitude shady areas, weak layers (embedded hoar, faceted crystals beneath a melt-freeze crust) can still be triggered.

Weather

On Thursday the peaks of the Northern Alps will be wreathed in heavy clouds, visibility will improve only minimally over the course of the day. In the grassy mountains the day will start with good visibility and lots of sunshine, clouds will move in during the afternoon, generate diffuse light. A light to moderate SW wind will be blowing. At 2000 m: 0 degrees.

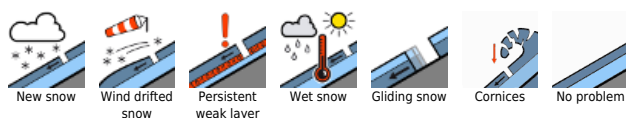
On Friday, peaks often shrouded in clouds, visibility often limited. Intermittent snowfall in the Northern Alps to start with. In the afternoon, the snowfall will become more frequent further south. A moderate westerly wind will be blowing. At 2000 m: -3 degrees.

Outlook

Little change is anticipated. Over the next few days, only a few centimetres of snowfall is expected.

Translated by Jeffrey McCabe, www.creativtrans.com

Avalanche problems



Danger ratings



Expositions

