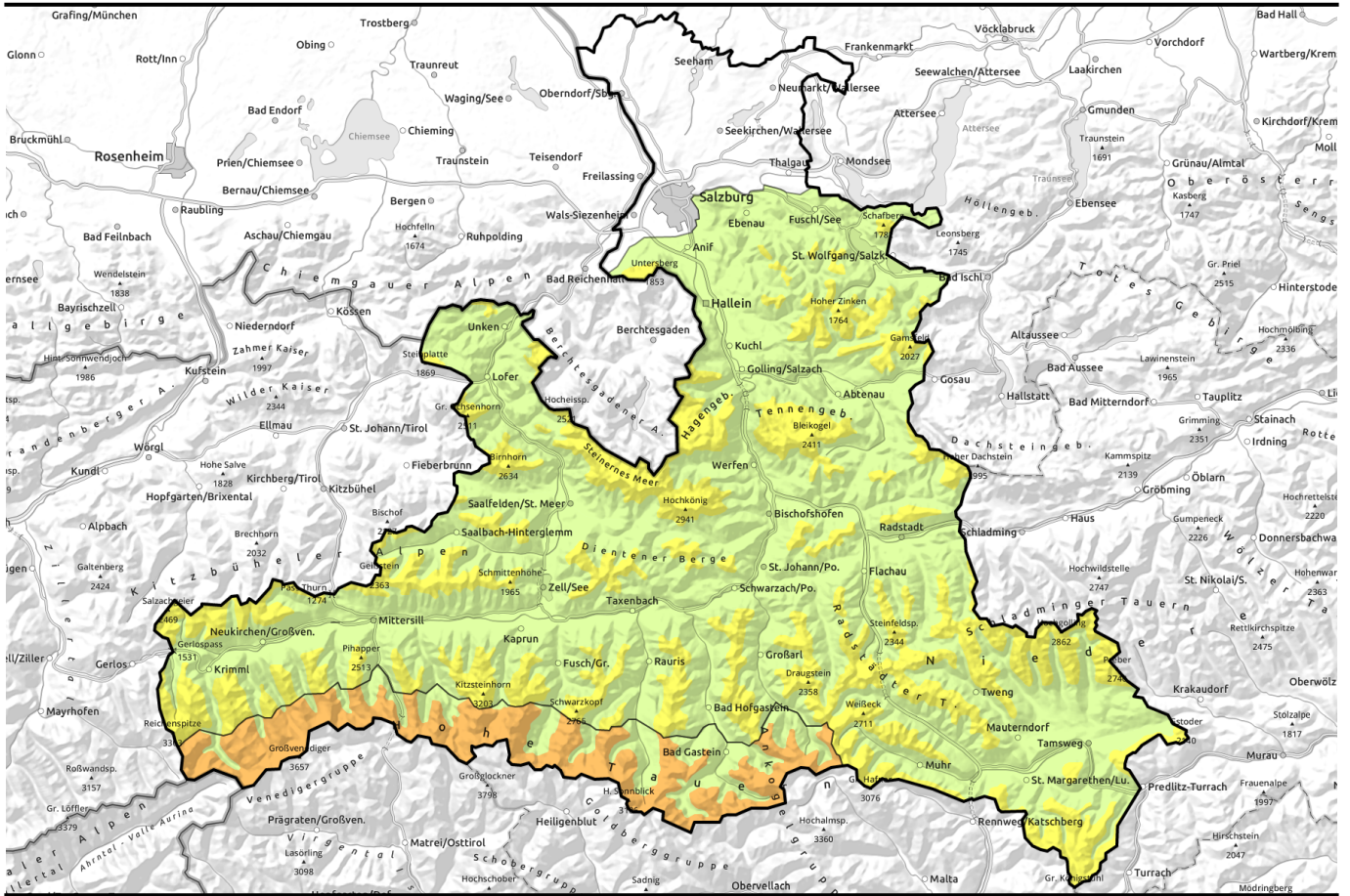


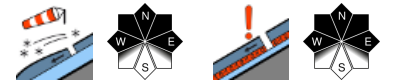
14.12.2022



Still little snow and lots of terrain



Großvenedigergruppe Alpenhauptkamm, Glocknergruppe Alpenhauptkamm, Goldberggruppe Alpenhauptkamm



Chiemgauer Alpen, Heutal, Reiteralpe, Loferer und Leoganger Steinberge, Oberpinzgauer Grasberge, Dientner Grasberge, Untersbergstock, Pongauer Grasberge, Kitzbüheler Alpen, Glemmtal, Osterhorngruppe, Gamsfeldgruppe, Steinernes Meer, Hochkönig, Hagengebirge, Göllstock, Tennengebirge, Gosaukamm, Großvenedigergruppe Nord, Glocknergruppe Nord, Goldberggruppe Nord, Niedere Tauern Nord, Niedere Tauern Alpenhauptkamm, Niedere Tauern Süd, Ankogelgruppe, Muhr, Nockberge



Avalanche problems



Danger ratings



Expositions



14.12.2022

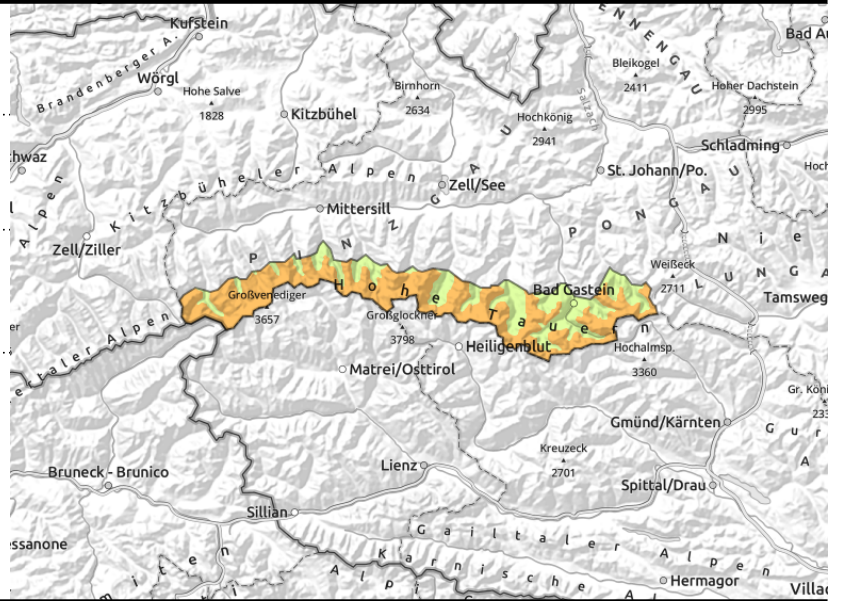
Großvenedigergruppe Alpenhauptkamm, Glocknergruppe Alpenhauptkamm, Goldberggruppe Alpenhauptkamm



southerly foehn wind generating fresh drifts



unfavourable layering of shallow snowpack, often embedded hoar



Southerly foehn winds are transporting the snow

Avalanche danger above the timberline is CONSIDERABLE, below that altitude danger is LOW. Southerly foehn winds are generating fresh drifts distant from ridgelines, easily triggered. Slabs remain small-sized (medium, at most) due to the small amounts of snow on the ground. Slabs which are triggered can fracture down to deeper layer of the snowpack.

Snowpack structure

Wind-exposed terrain is bare, most of the snow is in gullies and bowls. Particularly on shady slopes, the layering is unfavourable. In the lower part of the shallow snowpack is a sequence of melt-freeze crusts and faceted crystals which, depending on altitude, were formed over the last few weeks and months. Atop of that above the treeline, are the fresh snowdrift accumulations.

Weather

On Wednesday, good visibility, intermittent sunshine. Southerly winds will be brisk to strong. Temperature at 2000 m, -4 to 0 degrees, at 3000 m, -6 degrees. Thursday will offer good visibility and sunshine. In the course of the afternoon, intermediate-altitude clouds will move in and create diffuse visibility. Southerly foehn wind will be blowing at strong-to-stormy velocity. At 2000 m, -2 to +1 degree, at 3000 m, between -7 and -2 degrees.

Outlook

Little change is anticipated.

Avalanche problems



Danger ratings

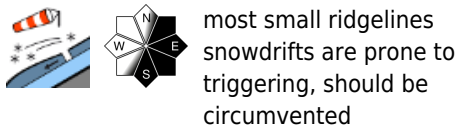
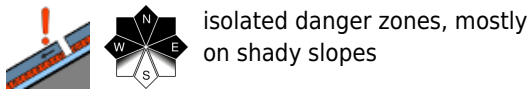
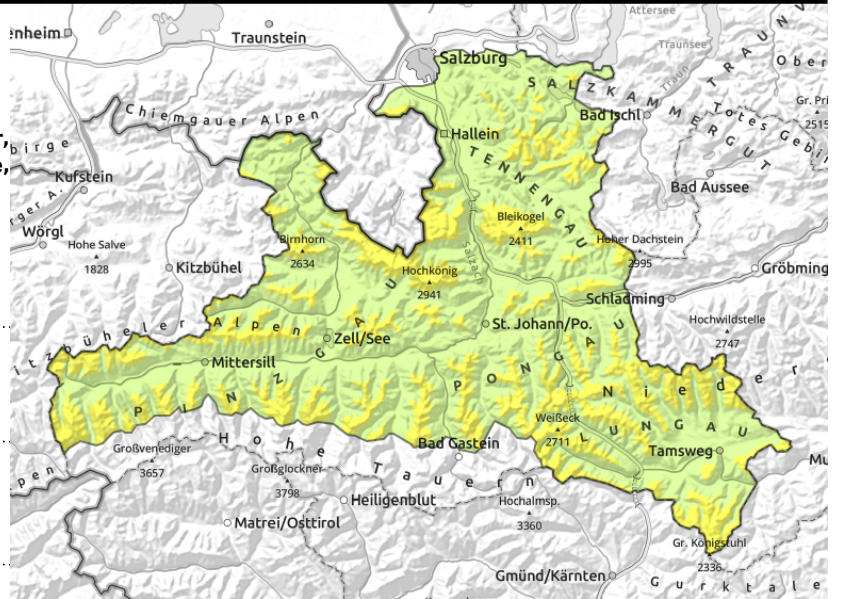


Expositions



14.12.2022

Chiemgauer Alpen, Heutal, Reiteralpe, Loferer und Leoganger Steinberge, Oberpinzgauer Grasberge, Dientner Grasberge, Untersbergstock, Pongauer Grasberge, Kitzbüheler Alpen, Glemmtal, Osterhorngruppe, Gamsfeldgruppe, Steinernes Meer, Hochkönig, Hagengebirge, Göllstock, Tennengebirge, Gosaukamm, Großvenedigergruppe Nord, Glocknergruppe Nord, Goldberggruppe Nord, Niedere Tauern Nord, Niedere Tauern Alpenhauptkamm, Niedere Tauern Süd, Ankogelgruppe, Muhr, Nockberge



Some snowdrift accumulations, small danger zones in the old snow

As of the timberline, avalanche danger is MODERATE, below that altitude danger is LOW. Two sources of risk for winter sports enthusiasts to unleash avalanches: The snowdrifts are easy to recognize, esp. on N/E/S facing slopes and near ridgelines. A small slab in very steep terrain (>35°) can be loosed by one sole person. Second, the old snowpack is of poor quality, particularly on shady slopes. A slab can grow to medium size.

As a result of the rising temperatures and solar radiation, very isolated and small naturally triggered avalanches are possible on south-facing slopes.

Snowpack structure

The overall snow depths amount to 20-60 cm. Often there is fine powder snow, in some places the terrain is windblown and bare of snow utterly.

The layering is often unfavourable. The snow is expansively metamorphosed (faceted) down towards the ground and has embedded melt-freeze crusts. Near forests and in wind-protected zones, the surface hoar has often been blanket by fresh snow.

Weather

On Wednesday in the Tauern and Lungau Nockberge, decent visibility with dispersed clouds, intermittent sunshine. In the Northern Alps, clouds are heavier, light snowfall is possible. Winds will be light to moderate from south to west. At 2000 m: -4 to 0 degrees; at 3000 m, -6 degrees.

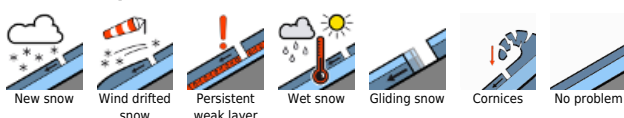
On Thursday the peaks of the Northern Alps will be shrouded in heavy cloud, dispersing over the course of the morning. In inneralpine regions the day will begin with good visibility and sunshine, but in the afternoon an intermediate-altitude layer of cloud will generate diffuse visibility. Moderately-strong SW winds will be blowing. At 2000 m: -2 to +1 degree; at 3000 m, between -7 and -2 degrees.

Outlook

Little change is anticipated.

Translated by Jeffrey McCabe, www.creativtrans.com

Avalanche problems



Danger ratings



Expositions

