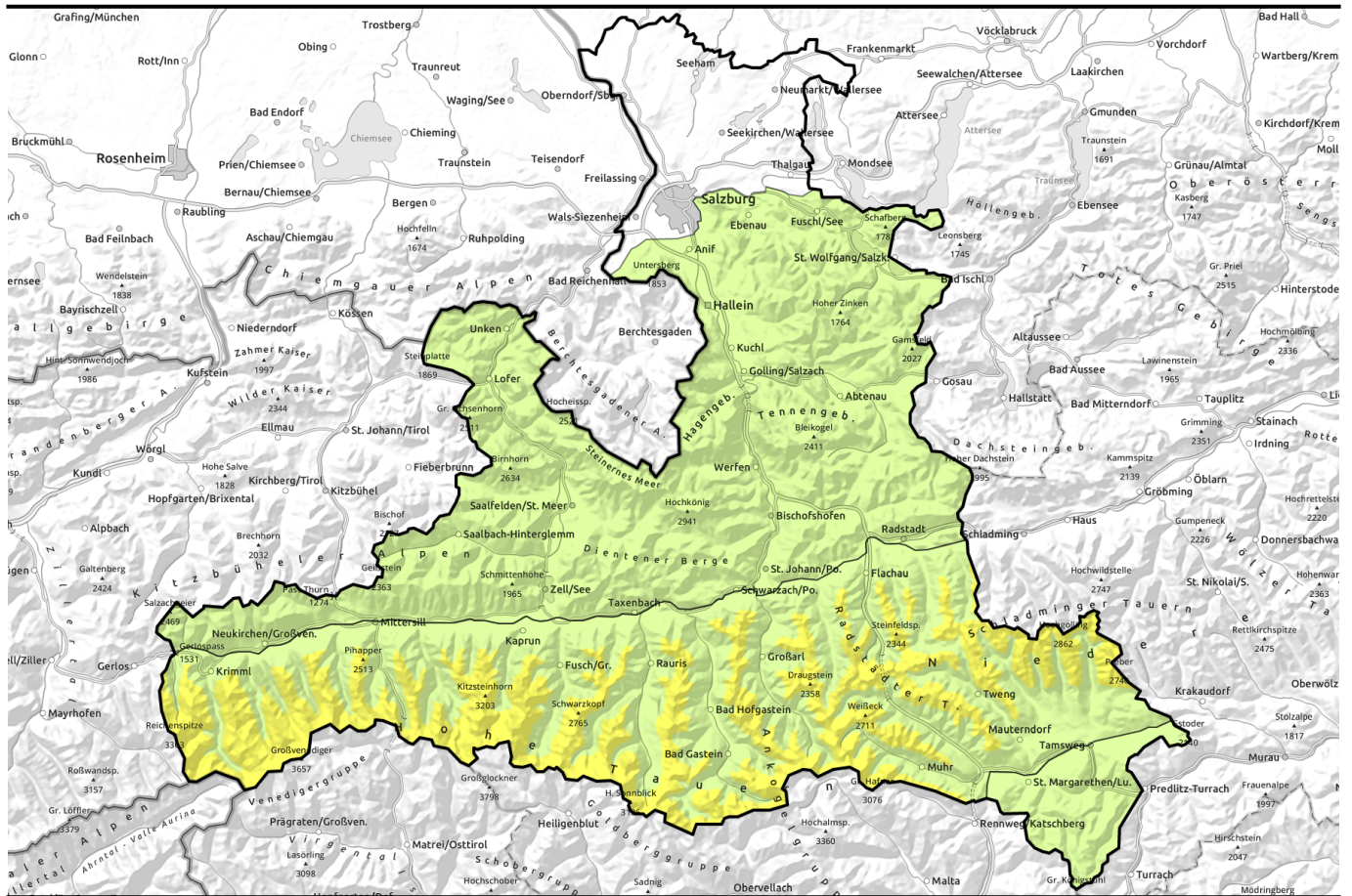


10.12.2022, morning



Avalanche danger rising



forestline
 Großvenedigergruppe Nord, Großvenedigergruppe Alpenhauptkamm, Glocknergruppe Alpenhauptkamm, Goldberggruppe Alpenhauptkamm, Goldberggruppe Nord, Glocknergruppe Nord, Ankogelgruppe, Muhr, Niedere Tauern Nord, Niedere Tauern Alpenhauptkamm, Niedere Tauern Süd



Chiemgauer Alpen, Heutal, Reiteralpe, Loferer und Leoganger Steinberge, Oberpinzgauer Grasberge, Dientner Grasberge, Untersbergstock, Pongauer Grasberge, Nockberge, Kitzbüheler Alpen, Glemmtal, Osterhorngruppe, Gamsfeldgruppe, Steinernes Meer, Hochkönig, Hagengebirge, Göllstock, Tennengebirge, Gosaukamm



Avalanche problems



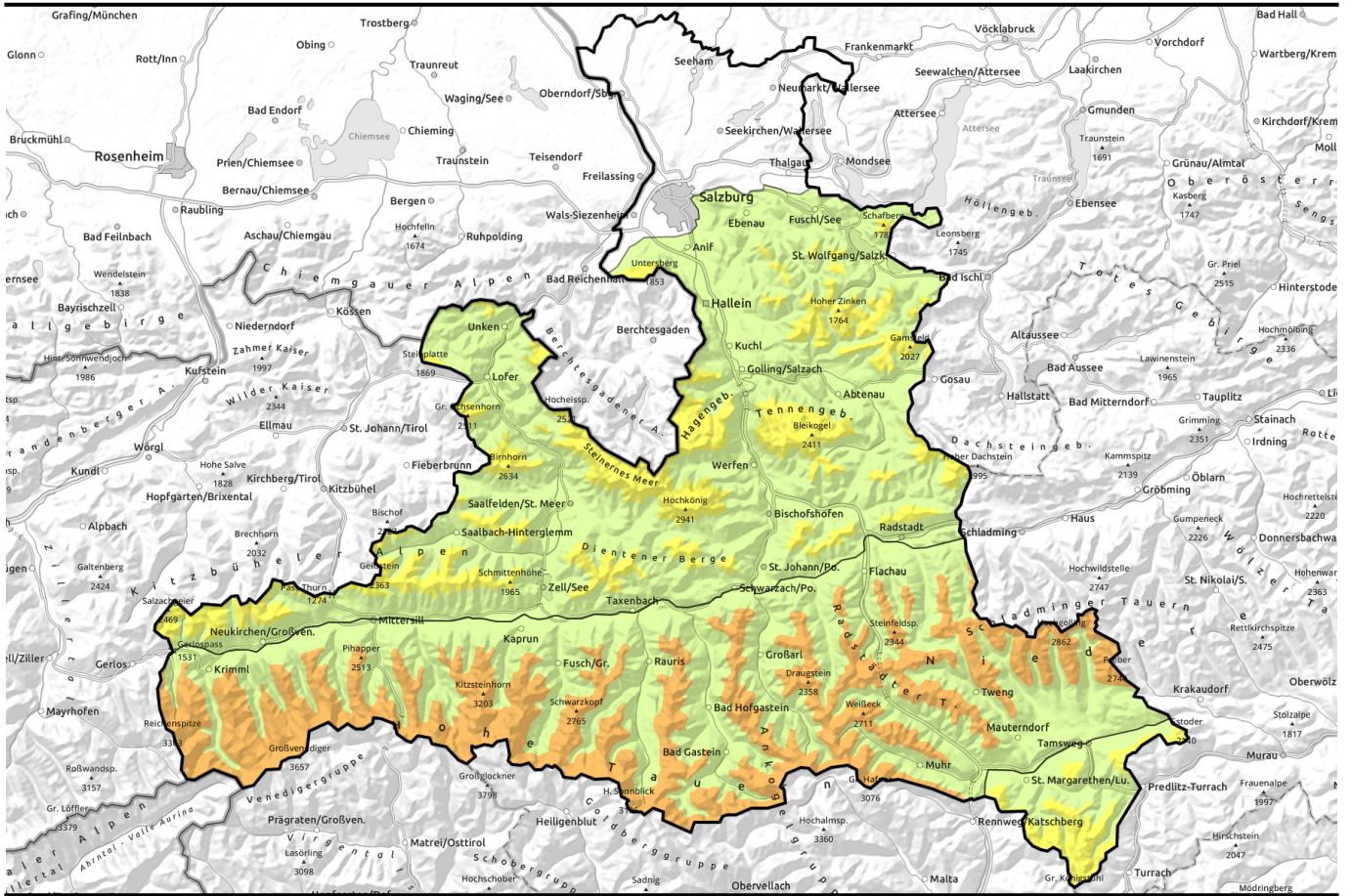
Danger ratings



Expositions



10.12.2022, afternoon



Anstieg der Lawinengefahr



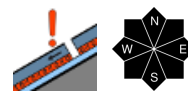
forestline

Großvenedigergruppe Nord, Großvenedigergruppe Alpenhauptkamm, Glocknergruppe Alpenhauptkamm, Goldberggruppe Alpenhauptkamm, Goldberggruppe Nord, Glocknergruppe Nord, Ankogelgruppe, Muhr, Niedere Tauern Nord, Niedere Tauern Alpenhauptkamm, Niedere Tauern Süd



forestline

Chiemgauer Alpen, Heutal, Reiteralpe, Loferer und Leoganger Steinberge, Oberpinzgauer Grasberge, Dientner Grasberge, Untersbergstock, Pongauer Grasberge, Nockberge, Kitzbüheler Alpen, Glemmtal, Osterhorngruppe, Gamsfeldgruppe, Steinernes Meer, Hochkönig, Hagengebirge, Göllstock, Tennengebirge, Gosaukamm



Avalanche problems



Danger ratings



Expositions

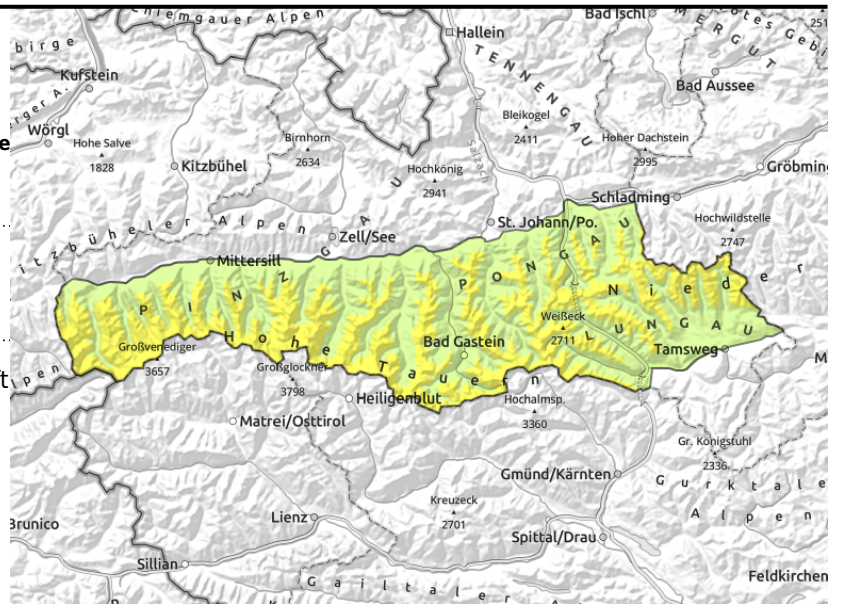


10.12.2022, morning

Großvenedigergruppe Nord, Großvenedigergruppe Alpenhauptkamm, Glocknergruppe Alpenhauptkamm, Goldberggruppe Alpenhauptkamm, Goldberggruppe Nord, Glocknergruppe Nord, Ankogelgruppe, Muhr, Niedere Tauern Nord, Niedere Tauern Alpenhauptkamm, Niedere Tauern Süd



trigger-sensitive fresh snowdrift accumulations / avoid them in steep terrain.



Danger zones increasing during the course of the day

Avalanche danger will increase in the course of the day, reach Danger Level 3 (Considerable) in the afternoon

Morning: Fresh snowdrift accumulations formed by strong-to-stormy southerly winds since Thursday are highly prone to triggering. They can be released even by one sole winter sports enthusiast particularly on shady slopes above the timberline, and grow to medium size. Danger zones are found particularly behind abrupt discontinuities in the terrain, in gullies and bowls, and in general in relatively wind-protected zones where the snowpack is distributed regularly over large areas.

Afternoon: with increasing precipitation and shifting wind direction on Saturday afternoon, avalanche prone locations will get blanketed with fresh snow, making them impossible to recognize. New, fresh snowdrift accumulations will be generated which will increase in spread and in size. They occur in all aspects.

Snowpack structure

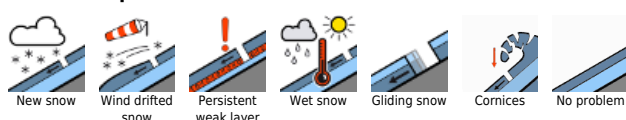
Particularly on shady slopes, the snowpack layering is currently unfavourable. Generally the lower part of the (still shallow) snowpack consists of a sequence of melt-freeze crusts and faceted crystals which (depending on altitude) have been formed over the recent weeks and months. In isolated cases the weak snowpack fundament in wind-protected terrain above the timberline is blanketed by newer snowdrift accumulations which are quite prone to triggering. Wind and fresh fallen snow will generate new snowdrift accumulations on Saturday afternoon in particular. In wind-protected terrain, near the forest zones or on high alpine meadows and in forest clearances below the treeline, there is frequently surface hoar on the snowpack surface which the fresh snow will then blanket.

In heavily wind-influenced regions (particularly from southerly foehn wind) the situation is somewhat better: the snowpack is irregularly distributed and diversified. Weak layers are less extensive, avalanche releases will be smaller. Moreover, surface hoar is not a danger there, as a potential triggerer of avalanches.

Weather

Saturday: mountains wreathed in heavy fog, a small amount of snowfall in the morning, becoming heavier in the afternoon. At high altitudes, moderately-strong NW winds will arise. At 2000 m: temperatures will drop from -3 to -8 degrees; at 3000 m, -8 degrees.

Avalanche problems



Danger ratings



Expositions



10.12.2022, morning

Sunday: the peaks will still be shrouded in clouds, a bit of intermittent snowfall anticipated. At high altitudes, NW winds will reach speeds of 80 km/hr, thus transporting the snow. It is very cold. At 2000 m, -13 degrees; at 3000 m, -17 degrees. The temperatures are further sharpened by the wind.

Outlook

Avalanche danger will increase on Saturday night. Fresh fallen snow and moderate-to-strong NW winds and low temperatures will lead to intensive snow transport. Fresh snow and fresh snowdrifts deposited atop the old snowpack are highly trigger-sensitive. Also naturally triggered avalanches are likely.

Avalanche problems



Danger ratings

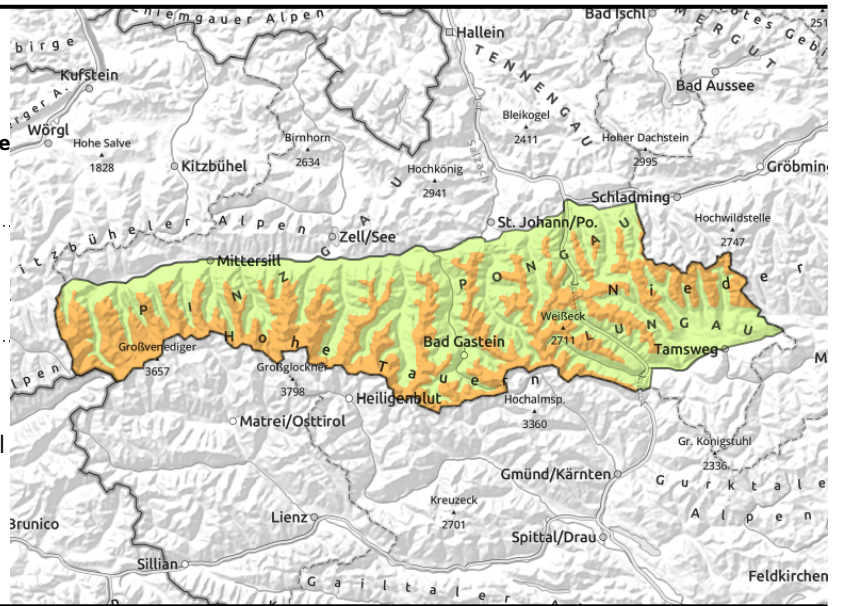


Expositions



10.12.2022, afternoon

Großvenedigergruppe Nord, Großvenedigergruppe Alpenhauptkamm, Glocknergruppe Alpenhauptkamm, Goldberggruppe Alpenhauptkamm, Goldberggruppe Nord, Glocknergruppe Nord, Ankogelgruppe, Muhr, Niedere Tauern Nord, Niedere Tauern Alpenhauptkamm, Niedere Tauern Süd



Fresh snow and snowdrifts deposited atop highly trigger-sensitive weak layers: potential for large-area fractures and avalanches

Danger zones increasing during the course of the day

Avalanche danger will increase in the course of the day, reach Danger Level 3 (Considerable) in the afternoon

Morning: Fresh snowdrift accumulations formed by strong-to-stormy southerly winds since Thursday are highly prone to triggering. They can be released even by one sole winter sports enthusiast particularly on shady slopes above the timberline, and grow to medium size. Danger zones are found particularly behind abrupt discontinuities in the terrain, in gullies and bowls, and in general in relatively wind-protected zones where the snowpack is distributed regularly over large areas.

Afternoon: with increasing precipitation and shifting wind direction on Saturday afternoon, avalanche prone locations will get blanketed with fresh snow, making them impossible to recognize. New, fresh snowdrift accumulations will be generated which will increase in spread and in size. They occur in all aspects.

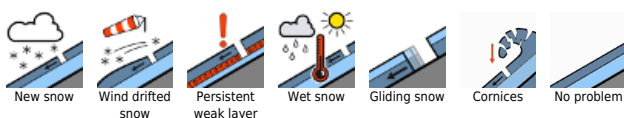
Snowpack structure

Particularly on shady slopes, the snowpack layering is currently unfavourable. Generally the lower part of the (still shallow) snowpack consists of a sequence of melt-freeze crusts and faceted crystals which (depending on altitude) have been formed over the recent weeks and months. In isolated cases the weak snowpack fundament in wind-protected terrain above the timberline is blanketed by newer snowdrift accumulations which are quite prone to triggering. Wind and fresh fallen snow will generate new snowdrift accumulations on Saturday afternoon in particular. In wind-protected terrain, near the forest zones or on high alpine meadows and in forest clearances below the treeline, there is frequently surface hoar on the snowpack surface which the fresh snow will then blanket. In heavily wind-influenced regions (particularly from southerly foehn wind) the situation is somewhat better: the snowpack is irregularly distributed and diversified. Weak layers are less extensive, avalanche releases will be smaller. Moreover, surface hoar is not a danger there, as a potential triggerer of avalanches.

Weather

Saturday: mountains wreathed in heavy fog, a small amount of snowfall in the morning, becoming heavier in the afternoon. At high altitudes, moderately-strong NW winds will arise. At 2000 m: temperatures will drop from -3 to -8 degrees; at 3000 m, -8 degrees.

Avalanche problems



Danger ratings



Expositions



10.12.2022, afternoon

Sunday: the peaks will still be shrouded in clouds, a bit of intermittent snowfall anticipated. At high altitudes, NW winds will reach speeds of 80 km/hr, thus transporting the snow. It is very cold. At 2000 m, -13 degrees; at 3000 m, -17 degrees. The temperatures are further sharpened by the wind.

Outlook

Avalanche danger will increase on Saturday night. Fresh fallen snow and moderate-to-strong NW winds and low temperatures will lead to intensive snow transport. Fresh snow and fresh snowdrifts deposited atop the old snowpack are highly trigger-sensitive. Also naturally triggered avalanches are likely.

Avalanche problems



Danger ratings

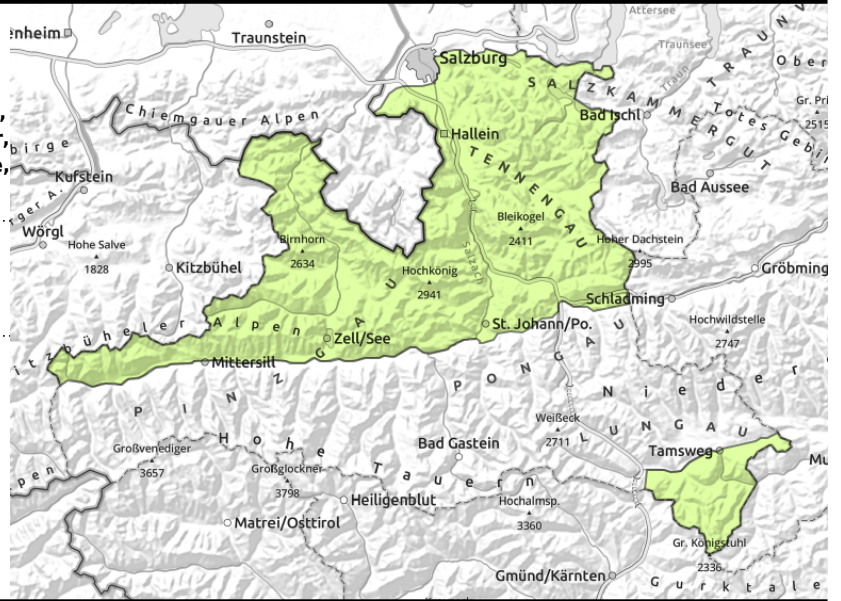


Expositions



10.12.2022, morning

Chiemgauer Alpen, Heutal, Reiteralpe, Loferer und Leoganger Steinberge, Oberpinzgauer Grasberge, Dientner Grasberge, Untersbergstock, Pongauer Grasberge, Nockberge, Kitzbüheler Alpen, Glemmtal, Osterhorngruppe, Gamsfeldgruppe, Steinernes Meer, Hochkönig, Hagengebirge, Göllstock, Tennengebirge, Gosaukamm



in extremely steep terrain (>40°) small avalanches can lead to big consequences

Avalanche prone locations increasing in size and in number to Danger Level 2, moderate, during the afternoon

Avalanche danger is rising in the afternoon due to some fresh snow and wind.

In the morning, danger stems from small, fresh snowdrift masses which can be triggered even by minimum additional loading in some places. Danger zones are to be found particularly in summit zones and on north-facing and east-facing ridgeline slopes. Avalanche releases will remain small sized. The risks of being swept along and forced to take a fall due to a release in steep terrain (>40°) outweigh those of being buried in snow masses.

In the afternoon: intensifying NW winds will generate new, trigger-sensitive snowdrift accumulations. these will grow as snowfall sets in and become dangerous for winter sports enthusiasts. Avalanche prone locations are found above the timberline, in wind-protected zones behind abrupt discontinuities in the terrain and in gullies and bowls. They are difficult to recognize.

Snowpack structure

The snowpack layering is currently unfavourable due to the shallowness of the snow cover. The snow is expansively metamorphosed (faceted) down to the ground, riddled with embedded melt-freeze crusts. On the surface there is surface hoar, particularly near forest zones, also in wind-protected areas above the treeline. New snow and snowdrifts are being deposited atop this weak snowpack surface and are correspondingly trigger-sensitive.

The situation on sunny slopes is somewhat better, also wherever the wind has generated an irregular distribution of snow.

Weather

Saturday: mountains shrouded in heavy fog, a small amount of snowfall in the morning, getting heavier in the afternoon. At high altitudes, moderately-strong NW winds will come up. At 2000 m: temperatures dropping from -3 to -8 degrees; at 3000 m, -8 degrees.

Sunday: the peaks will still be cloaked in clouds, a bit of intermittent snowfall. At high altitudes, the NW winds will reach speeds of 80 km/hr, thus transporting the snow. It is very cold. At 2000 m, -13 degrees; at 3000 m, -17 degrees. The temperatures are further sharpened by the wind.

Avalanche problems



Danger ratings



Expositions



10.12.2022, morning

Outlook

Avalanche danger will increase on Saturday night. Fresh fallen snow and moderate-to-strong NW winds and low temperatures will lead to intensive snow transport. Fresh snow and fresh snowdrifts deposited atop the old snowpack are highly trigger-sensitive.

Avalanche problems



Danger ratings

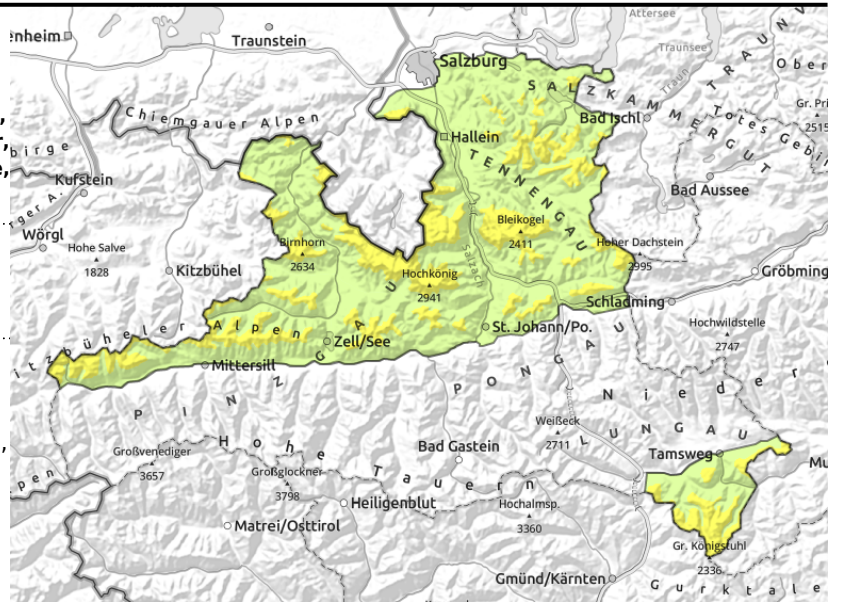


Expositions



10.12.2022, afternoon

Chiemgauer Alpen, Heutal, Reiteralpe, Loferer und Leoganger Steinberge, Oberpinzgauer Grasberge, Dientner Grasberge, Untersbergstock, Pongauer Grasberge, Nockberge, Kitzbüheler Alpen, Glemmtal, Osterhorngruppe, Gamsfeldgruppe, Steinernes Meer, Hochkönig, Hagengebirge, Göllstock, Tennengebirge, Gosaukamm



forestline



More caution urged at all altitudes: fresh snow and snowdrifts are trigger-sensitive, danger zones difficult to recognize

Avalanche prone locations increasing in size and in number to Danger Level 2, moderate, during the afternoon

Avalanche danger is rising in the afternoon due to some fresh snow and wind.

In the morning, danger stems from small, fresh snowdrift masses which can be triggered even by minimum additional loading in some places. Danger zones are to be found particularly in summit zones and on north-facing and east-facing ridgeline slopes. Avalanche releases will remain small sized. The risks of being swept along and forced to take a fall due to a release in steep terrain (>40°) outweigh those of being buried in snow masses.

In the afternoon: intensifying NW winds will generate new, trigger-sensitive snowdrift accumulations. these will grow as snowfall sets in and become dangerous for winter sports enthusiasts. Avalanche prone locations are found above the timberline, in wind-protected zones behind abrupt discontinuities in the terrain and in gullies and bowls. They are difficult to recognize.

Snowpack structure

The snowpack layering is currently unfavourable due to the shallowness of the snow cover. The snow is expansively metamorphosed (faceted) down to the ground, riddled with embedded melt-freeze crusts. On the surface there is surface hoar, particularly near forest zones, also in wind-protected areas above the treeline. New snow and snowdrifts are being deposited atop this weak snowpack surface and are correspondingly trigger-sensitive.

The situation on sunny slopes is somewhat better, also wherever the wind has generated an irregular distribution of snow.

Weather

Saturday: mountains shrouded in heavy fog, a small amount of snowfall in the morning, getting heavier in the afternoon. At high altitudes, moderately-strong NW winds will come up. At 2000 m: temperatures dropping from -3 to -8 degrees; at 3000 m, -8 degrees.

Sunday: the peaks will still be cloaked in clouds, a bit of intermittent snowfall. At high altitudes, the NW winds will reach speeds of 80 km/hr, thus transporting the snow. It is very cold. At 2000 m, -13 degrees; at 3000 m, -17 degrees. The temperatures are further sharpened by the wind.

Avalanche problems



Danger ratings



Expositions



10.12.2022, afternoon

Outlook

Avalanche danger will increase on Saturday night. Fresh fallen snow and moderate-to-strong NW winds and low temperatures will lead to intensive snow transport. Fresh snow and fresh snowdrifts deposited atop the old snowpack are highly trigger-sensitive.

Translated by Jeffrey McCabe, www.creativtrans.com

Avalanche problems



Danger ratings



Expositions

