

Trigger-sensitive snowdrifts along Main Alpine Ridge



forestline
 Großenedigergruppe Nord, Großenedigergruppe Alpenhauptkamm, Glocknergruppe Alpenhauptkamm, Goldberggruppe Alpenhauptkamm, Goldberggruppe Nord, Glocknergruppe Nord, Ankogelgruppe, Muhr, Niedere Tauern Nord, Niedere Tauern Alpenhauptkamm, Niedere Tauern Süd



Chiemgauer Alpen, Heutal, Reiteralpe, Loferer und Leoganger Steinberge, Oberpinzgauer Grasberge, Dientner Grasberge, Untersbergstock, Pongauer Grasberge, Nockberge, Kitzbüheler Alpen, Glemmtal, Steinernes Meer, Hochkönig, Hagengebirge, Göllstock, Osterhorngruppe, Gamsfeldgruppe, Tennengebirge, Gosaukamm



Avalanche problems



Danger ratings

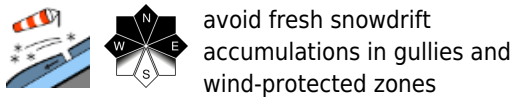
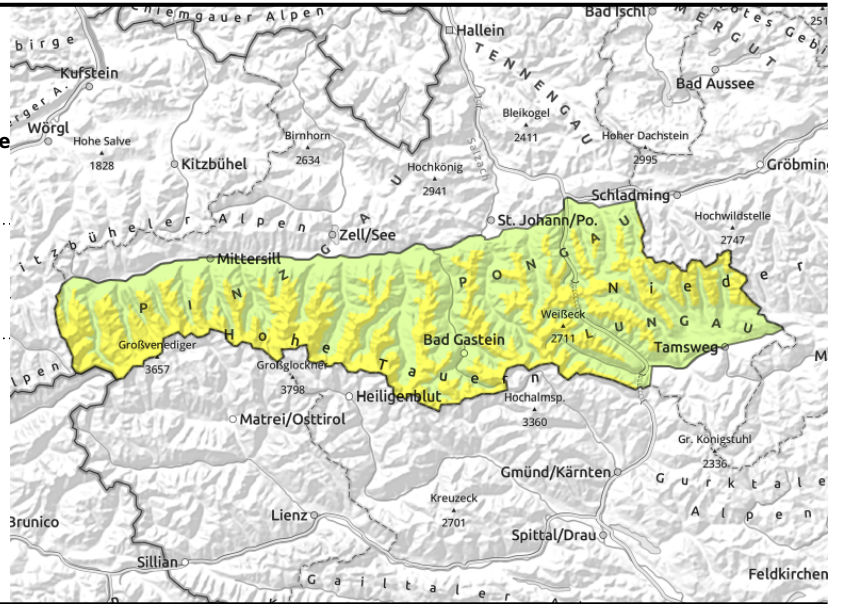


Expositions



09.12.2022

Großvenedigergruppe Nord, Großvenedigergruppe Alpenhauptkamm, Glocknergruppe Alpenhauptkamm, Goldberggruppe Alpenhauptkamm, Goldberggruppe Nord, Glocknergruppe Nord, Ankogelgruppe, Muhr, Niedere Tauern Nord, Niedere Tauern Alpenhauptkamm, Niedere Tauern Süd



Trigger-sensitive snowdrift masses in wind-protected areas

As a result of southerly winds, small and, in isolated cases, medium-sized snowdrift accumulations have been generated on west-facing, north-facing and east-facing slopes above the timberline. Also on Friday amid light snowfall and, in some places, strong-velocity winds, small snowdrift masses are being freshly generated. These masses are prone to triggering and can be released even by one single winter sports enthusiast. Danger zones are found above all in gullies and bowls, as well as in relatively wind-protected zones. Avalanches can become dangerous for skiers particularly where the snowpack is equally distributed over a widespread area.

From the point of view of skiers, most favourable at the moment are wind-protected, moderately steep slopes distant from ridges. In these zones, not only is avalanche danger negligible, but there is also loose, fresh snow which can be enjoyed in some places in the snow-filled bowls...without meeting up with (many) rocks.

Snowpack structure

Particularly on shady slopes, the snowpack layering is currently unfavourable. Generally the lower part of the (still shallow) snowpack consists of a sequence of melt-freeze crusts and faceted crystals which (depending on altitude) have been formed over the recent weeks and months. Weak layers are blanketed by drifts only in isolated cases, mostly the necessary slab is lacking. Snowdrift accumulations are found in wind-protected zones above the treeline.

In general, winter sports in outlying terrain still have insufficient snow. Above 2000 m the overall snow depth is 40 to 70 cm. The snow is distributed very irregularly: wind-exposed terrain is bare, gullies and bowls are filled to the brim.

Weather

Friday: gray skies due to heavy cloud, the summits are often free. Residual fog can limit visibility. Near the Nockberge and on the Main Alpine Ridge of the Tauern, a small amount of snowfall is possible. In high altitude Tauern regions, southerly wind will prevail (up to 80 km/hr); at 3000 m; -7 degrees.

Saturday: the peaks will be shrouded in fog, a bit of snowfall in the morning, in the afternoon this will intensify. In high alpine regions, NW winds will intensify. At 2000 m: from -5 to -9 degrees; at 3000m, -10 degrees.

Avalanche problems



Danger ratings



Expositions

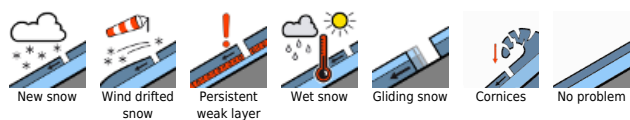


09.12.2022

Outlook

Avalanche danger will increase on the weekend as a result of precipitation and winds.

Avalanche problems



Danger ratings

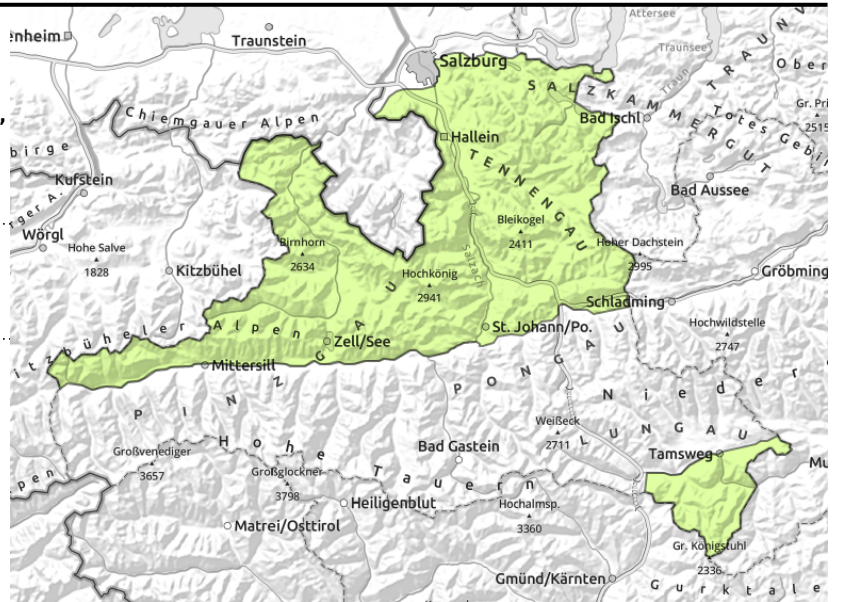


Expositions



09.12.2022

Chiemgauer Alpen, Heutal, Reiteralpe, Loferer und Leoganger Steinberge, Oberpinzgauer Grasberge, Dientner Grasberge, Untersbergstock, Pongauer Grasberge, Nockberge, Kitzbüheler Alpen, Glemmtal, Steinernes Meer, Hochkönig, Hagengebirge, Göllstock, Osterhorngruppe, Gamsfeldgruppe, Tennengebirge, Gosaukamm



in extremely steep terrain (>40°) small avalanches can lead to big consequences

Favourable situation widespread

The small fresh snowdrift masses from the beginning of the week can in isolated cases be triggered by one sole winter sports enthusiast. The danger zones are easily recognized for the most part, they occur especially in summit and on ridgeline north and east-facing slopes. Avalanches tend to remain small-sized. The risks of being swept along and forced to take a fall due to a release in steep terrain (>40°) outweigh those of being buried in snow masses.

Snowpack structure

Freshly formed snowdrift accumulations are prone to triggering in isolated cases. Particularly on north-facing and east-facing ridgeline slopes at altitudes where the snowdrifts were deposited on top of a loose snowpack surface of faceted crystals. In outlying terrain away from secured ski runs, there is still insufficient snow on the ground. Ski tours will meet up with rocks.

Weather

Friday: gray skies due to heavy cloud, the summits are often free. Residual fog can limit visibility. At high altitudes the southerly winds can reach speeds of 50 km/hr. At 2000 m: -2 degrees, at 3000 m: -7 degrees.

Saturday: the peaks will be shrouded in fog, some isolated snowfall in the morning, in the afternoon the precipitation will increase. In high alpine regions, NW winds will intensify. Temperatures will drop from -5 to -9 degrees; at 3000 m, -10 degrees.

Outlook

Avalanche danger will increase on the weekend as a result of precipitation and winds.

Translated by Jeffrey McCabe, www.creativtrans.com

Avalanche problems



Danger ratings



Expositions

