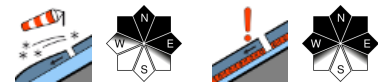


## Still moderate danger in Hohe Tauern

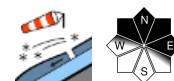


2400 m

Großenedigergruppe Nord, Großenedigergruppe Alpenhauptkamm, Glocknergruppe Alpenhauptkamm, Goldberggruppe Alpenhauptkamm, Goldberggruppe Nord, Glocknergruppe Nord, Ankogelgruppe, Muhr



Chiemgauer Alpen, Heutal, Reiteralpe, Loferer und Leoganger Steinberge, Oberpinzgauer Grasberge, Dientner Grasberge, Untersbergstock, Pongauer Grasberge, Nockberge, Niedere Tauern Süd, Kitzbüheler Alpen, Glemmtal, Niedere Tauern Nord, Steinernes Meer, Hochkönig, Hagengebirge, Göllstock, Niedere Tauern Alpenhauptkamm, Osterhorngruppe, Gamsfeldgruppe, Tennengebirge, Gosaukamm



### Avalanche problems



### Danger ratings

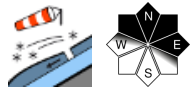


### Expositions

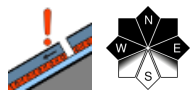


**07.12.2022**

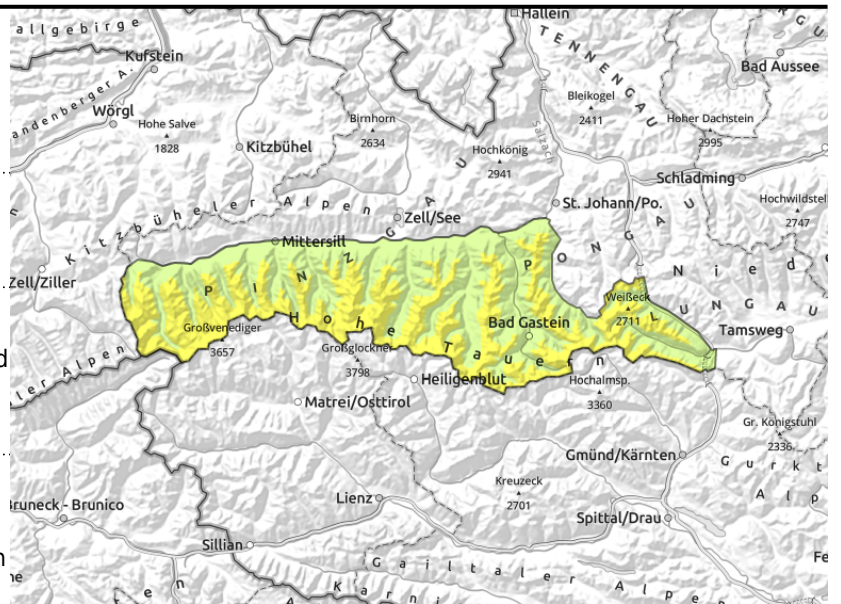
**Großvenedigergruppe Nord, Großvenedigergruppe Alpenhauptkamm, Glocknergruppe Alpenhauptkamm, Goldberggruppe Alpenhauptkamm, Goldberggruppe Nord, Glocknergruppe Nord, Ankogelgruppe, Muhr**

high-alpine regions: avoid snowdrift accumulations behind abrupt discontinuities (easily recognised)



danger zones impossible to recognise. High caution demanded in very steep terrain (>35°).



## Danger zones particularly in shady ridgeline terrain

In high alpine regions, behind abrupt discontinuities in the terrain and on wind-protected slopes at the foot of rock cliffs, fresh snowdrift accumulations have been generated from the new snow and brisk westerly winds since Tuesday, particularly on north-facing and east-facing ridgeline slopes.

Observations of fresh, also naturally-triggered avalanches on Tuesday demonstrate just how trigger-sensitive the snowdrifts are. They're mostly small, easily recognized pending good visibility. Where there has been more snowfall, avalanches can reach medium size in isolated cases and present a danger to winter sports enthusiasts.

In addition, the old now blanketed snowdrift accumulations from last weekend are still prone to triggering in isolated cases. Danger zones are found on very steep (>35°) shady slopes above 2500 m, in somewhat wind-protected terrain such as gullies and bowls. Avalanches can in isolated cases attain medium size.

From the point of view of skiers, most favourable at the moment are wind-protected, moderately steep slopes distant from ridges. In these zones the avalanche danger is minimal, but there is also loose, fresh snow which can be enjoyed in some places in the snow-filled bowls...without meeting up with rocks.

## Snowpack structure

Particularly on shady slopes, the snowpack layering is currently unfavourable. Generally the lower part (of the still shallow snowpack) is a sequence of melt-freeze crusts and faceted crystals which (depending on altitude) have been formed over the recent weeks and months. The necessary slab is still lacking to cover the potential weak layers. In isolated cases it is found in the form of older, blanketed snowdrift masses in gullies and bowls above 2400 m and in fresh, easily recognized, but highly trigger-sensitive snowdrift masses in summit zones.

In general, winter sports in outlying terrain still have insufficient snow. Above 2000 m the overall snow depth is 40 to 70 cm. The snow is distributed very irregularly: wind-exposed terrain is bare, gullies and bowls are filled to the brim.

## Weather

Wednesday: from the start, visibility is limited due to heavy cloud, although some sunshine is

### Avalanche problems



### Danger ratings



### Expositions



# 07.12.2022

expected along the Main Alpine Ridge. Winds will be moderate from the west near summit level. At 2000 m: -8 to -6 degrees; at 3000 m, -13 degrees.

Thursday: very sunny from the start. Only a few cloudbanks in the valleys will limit visibility. No precipitation. Westerly winds at summit level along the Main Alpine Ridge will be moderate. At 2000 m: -7 degrees; at 3000 m: -13 degrees.

## Outlook

Avalanche danger is not expected to change significantly. In high alpine regions, ongoing moderate danger of dry-snow avalanches.

### Avalanche problems



### Danger ratings

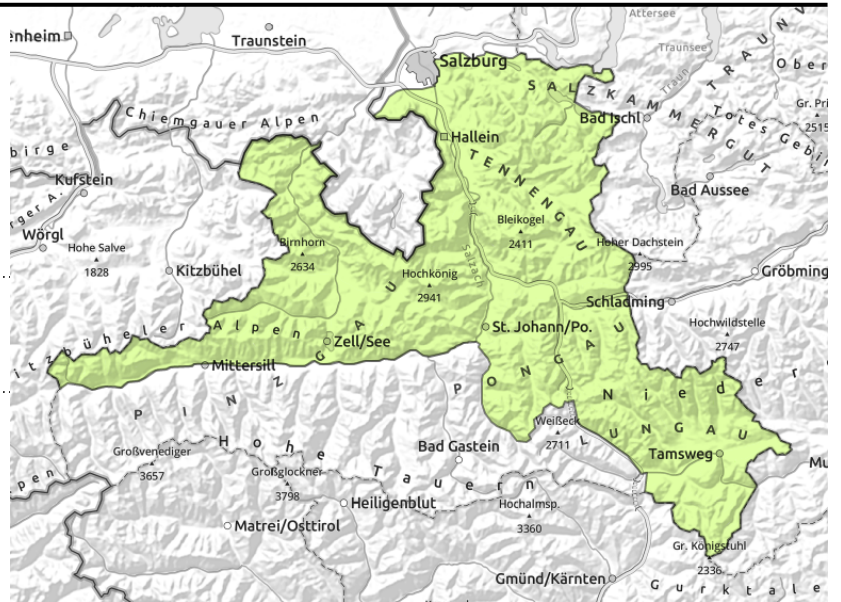


### Expositions



**07.12.2022**

**Chiemgauer Alpen, Heutal, Reiteralpe, Loferer und Leoganger Steinberge, Oberpinzgauer Grasberge, Dientner Grasberge, Untersbergstock, Pongauer Grasberge, Nockberge, Niedere Tauern Süd, Kitzbüheler Alpen, Glemmtal, Niedere Tauern Nord, Steinernes Meer, Hochkönig, Hagengebirge, Göllstock, Niedere Tauern Alpenhauptkamm, Osterhorngruppe, Gamsfeldgruppe, Tennengebirge, Gosaukamm**



in extremely steep terrain (>40°) small avalanches can lead to big consequences

## Favourable situation widespread

The small fresh snowdrift masses of the last few days can be triggered even by one single winter sports enthusiast. The generally easily-recognized danger zones are found particularly on north and east ridgeline slopes above about 2400 m. Avalanches remain small-sized. The danger of being swept along and forced to take a fall in case of a release in extremely steep (>40°) terrain outweighs that of being buried in snow masses.

## Snowpack structure

Some fresh snow and westerly wind have formed small, new snowdrift accumulations since Tuesday night. They are occasionally prone to triggering, esp. on north and east-facing ridgeline slopes at high altitude where the snowdrifts have been deposited atop a loose surface of faceted crystals. In outlying terrain, still too little snow on the ground. Ski tours will meet up with rocks.

## Weather

Wednesday: from the start, visibility is limited due to heavy cloud, although some sunshine is expected along the Main Alpine Ridge. Winds will be moderate from the west near summit level. At 2000 m: -8 to -6 degrees; at 3000 m, -13 degrees.

Thursday: very sunny from the start. Only a few cloudbanks in the valleys will limit visibility. No precipitation. Westerly winds at summit level along the Main Alpine Ridge will be moderate. At 2000 m: -7 degrees; at 3000 m: -13 degrees.

## Outlook

Avalanche danger remains low: Danger Level 1.

Translated by Jeffrey McCabe, [www.creativtrans.com](http://www.creativtrans.com)

### Avalanche problems



### Danger ratings



### Expositions

