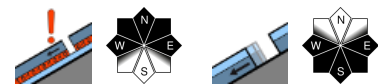


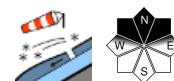
## Still moderate danger in Hohe Tauern



Großenedigergruppe Nord, Großenedigergruppe Alpenhauptkamm, Glocknergruppe Alpenhauptkamm, Goldberggruppe Alpenhauptkamm, Goldberggruppe Nord, Glocknergruppe Nord, Ankogelgruppe, Muhr



Chiemgauer Alpen, Heutal, Reiteralpe, Loferer und Leoganger Steinberge, Oberpinzgauer Grasberge, Dientner Grasberge, Untersbergstock, Pongauer Grasberge, Nockberge, Niedere Tauern Süd, Kitzbüheler Alpen, Glemmtal, Niedere Tauern Nord, Steinernes Meer, Hochkönig, Hagengebirge, Göllstock, Niedere Tauern Alpenhauptkamm, Osterhorngruppe, Gamsfeldgruppe, Tennengebirge, Gosaukamm



### Avalanche problems



### Danger ratings

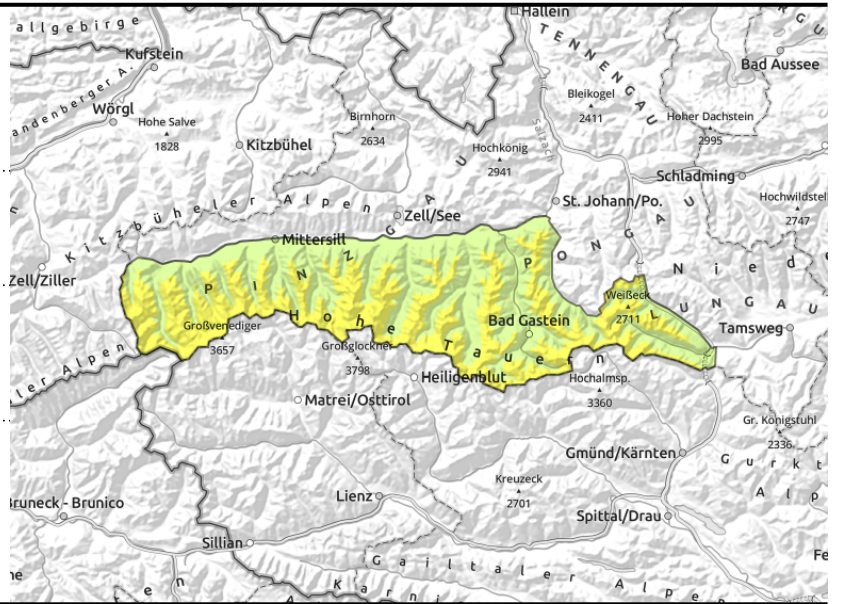


### Expositions



06.12.2022

Großvenedigergruppe Nord, Großvenedigergruppe Alpenhauptkamm, Glocknergruppe Alpenhauptkamm, Goldberggruppe Alpenhauptkamm, Goldberggruppe Nord, Glocknergruppe Nord, Ankogelgruppe, Muhr



danger zones blanketed, difficult to recognize / special caution in steep terrain (>35°)

naturally triggered on steep grassy slopes / avoid zones below glide cracks

### Blanketed danger zones at high altitudes

Isolated avalanche prone locations for dry-snow slab avalanches are found particularly on shady slopes above 2400 m, where fresh snowdrifts have been deposited in gullies and bowls from the southerly winds of the last few days. On Monday night the snowdrifts will be blanketed by fresh snow, making them difficult to recognize. Small slab avalanches can be triggered even by one single winter sports enthusiast, in some cases even medium-sized releases, particularly in steep terrain (>35°). Caution: avalanche prone locations lurk wherever skiing is possible without contact with rocks, that is, in wind-loaded areas.

In high alpine regions behind ridges and abrupt changes in the terrain, moderately strong westerly winds will form new snowdrift accumulations on Tuesday. These will be small-sized and easy to recognize, pending good visibility. In terrain where skier can be forced to take a fall, they should be avoided. As a result of solar radiation, small dry-snow loose avalanches can be expected in extremely steep terrain (>40°).

At lower altitudes, avalanche danger is low. Below 2500 m there is little risk from glide-snow avalanches, especially on steep, smooth grass-covered slopes.

### Snowpack structure

Especially on leeward shady slopes at high altitude, fresh snowdrifts from the weekend were deposited atop a quite weak snowpack surface. The wind-transported snow blankets a soft layer of mostly faceted crystals, potentially a weak layer. On Monday night, 10-15 cm of fresh snowfall is anticipated which will be blanketed over by fresh trigger-sensitive snowdrift accumulations. As a result of moderate strength westerly winds, isolated fresh snowdrift accumulations will form on the ridgelines in high alpine regions.

In general for winter sports enthusiasts active away from secured ski runs in outlying terrain: there is not much snow on the ground. Above 2000 m, the overall snow depth is 30-60- cm, but variably distributed. Wind-exposed terrain is bare, gullies and bowls are filled to the brim.

### Weather

Tuesday: on Tuesday, sunny weather will soon prevail, fog in the valleys. Visibility will be good, a brisk westerly wind will be blowing in the high alpine regions. At 2000 m, -5 to -3 degrees; at 3000 m, -10 to -8 degrees. Temperatures slowly rising during the daytime.

#### Avalanche problems



#### Danger ratings



#### Expositions



**06.12.2022**

Wednesday: Mostly dry, with some sunshine. Winds will be moderate to brisk from the northwest. At 2000 m, -7 to -5 degrees; at 3000 m, -11 degrees.

**Outlook**

Avalanche danger levels are not expected to change significantly. In high alpine regions, ongoing moderate danger of dry-snow avalanches.

**Avalanche problems**



**Danger ratings**

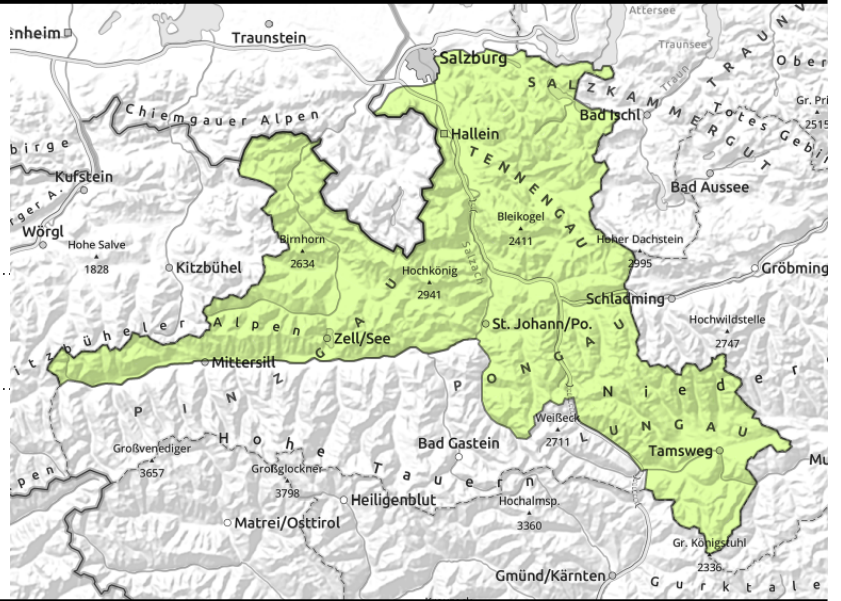


**Expositions**



06.12.2022

Chiemgauer Alpen, Heutal, Reiteralpe, Loferer und Leoganger Steinberge, Oberpinzgauer Grasberge, Dientner Grasberge, Untersbergstock, Pongauer Grasberge, Nockberge, Niedere Tauern Süd, Kitzbüheler Alpen, Glemmtal, Niedere Tauern Nord, Steinernes Meer, Hochkönig, Hagengebirge, Göllstock, Niedere Tauern Alpenhauptkamm, Osterhorngruppe, Gamsfeldgruppe, Tennengebirge, Gosaukamm



small avalanches with big consequences possible in extremely steep terrain (40°)

### Favourable situation widespread

The small, fresh snowdrift masses from the last few days can still be triggered by winter sports enthusiasts only in isolated cases. Danger zones are found particularly on shady ridgeline slopes above about 2400 m, particularly in leeward gullies and bowls. Avalanches tend to remain small-sized. The danger of being swept along and forced to take a fall in extremely steep terrain (>40°) outweighs the risks of being buried in snow masses. The snowdrift masses can be blanketed by fresher snow, making them harder to recognize.

On steep, grass-covered slopes, small, naturally-triggered avalanches are still possible.

### Snowpack structure

The small snowdrift masses which have accumulated over the last few days as a result of southerly winds, they largely consolidated on Sunday and Monday. Only in isolated cases are they still prone to triggering, particularly on shady ridgeline slopes at high altitude, where snowdrift accumulations were deposited atop a loose snowpack surface of faceted crystals. On Monday night, 5-10 cm of fresh snowfall is anticipated.

For winter sports enthusiasts there is still insufficient snow. Ski tours can expect contact with rocks.

### Weather

Tuesday: on Tuesday, sunny weather will soon prevail, fog in the valleys. Visibility will be good, a brisk westerly wind will be blowing in the high alpine regions. At 2000 m, -5 to -3 degrees; at 3000 m, -10 to -8 degrees. Temperatures slowly rising during the daytime.

Wednesday: Mostly dry, with some sunshine. Winds will be moderate to brisk from the northwest. At 2000 m, -7 to -5 degrees; at 3000 m, -11 degrees.

### Outlook

Avalanche danger remains low: Danger Level 1.

Translated by Jeffrey McCabe, [www.creativtrans.com](http://www.creativtrans.com)

#### Avalanche problems



#### Danger ratings



#### Expositions

