

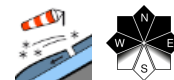
Strong foehn winds causing snowdrift problem at high altitude



2300 m
 Großenedigergruppe Nord, Großenedigergruppe Alpenhauptkamm, Glocknergruppe Alpenhauptkamm, Goldberggruppe Alpenhauptkamm, Goldberggruppe Nord, Glocknergruppe Nord, Niedere Tauern Alpenhauptkamm, Niedere Tauern Nord, Steinernes Meer, Hochkönig, Hagengebirge, Göllstock, Ankogelgruppe, Muhr



Chiemgauer Alpen, Heutal, Reiteralpe, Loferer und Leoganger Steinberge, Oberpinzgauer Grasberge, Dientner Grasberge, Osterhorngruppe, Gamsfeldgruppe, Untersbergstock, Pongauer Grasberge, Nockberge, Niedere Tauern Süd, Tennengebirge, Gosaukamm, Kitzbüheler Alpen, Glemmtal



Avalanche problems



Danger ratings

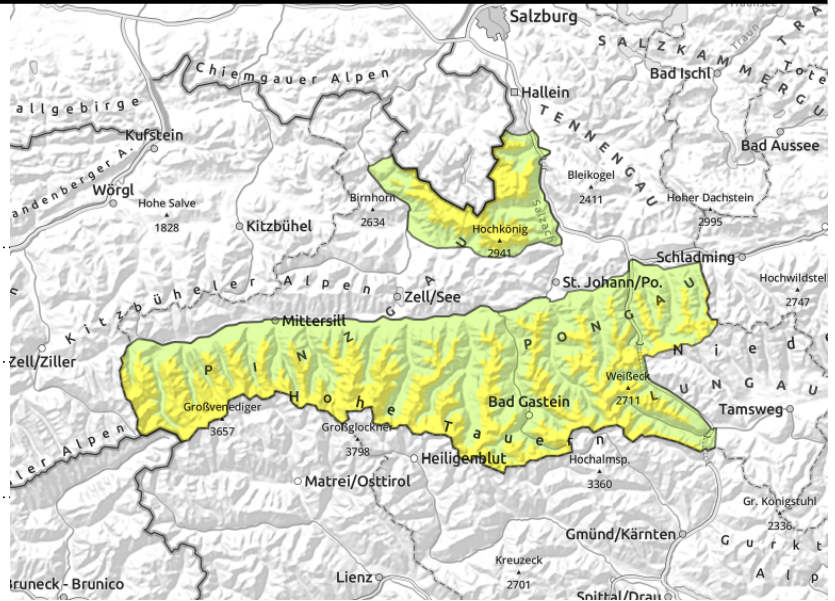


Expositions



04.12.2022 through 05.12.2022

Großvenedigergruppe Nord, Großvenedigergruppe Alpenhauptkamm, Glocknergruppe Alpenhauptkamm, Goldberggruppe Alpenhauptkamm, Goldberggruppe Nord, Glocknergruppe Nord, Niedere Tauern Alpenhauptkamm, Niedere Tauern Nord, Steinernes Meer, Hochkönig, Hagengebirge, Göllstock, Ankogelgruppe, Muhr



caution: fresh, sensitive snowdrift masses in wind-impacted terrain



naturally triggered releases on steep grassy slopes - avoid zones below glide cracks

Main danger: freshly generated snowdrift masses

Strong southerly winds are transporting the loose old and fresh snow, depositing it as drifts behind discontinuities in the terrain, in gullies and bowls. The often hardened drifts are prone to triggering, particularly on shady slopes, often can be triggered by one single winter sports enthusiast as an avalanche. Size and spread of danger zones increase with ascending altitude. Avalanches tend to be small, in isolated cases can attain medium size. Caution: danger zones in steep terrain are particularly threatening in the places where skiing is possible without meeting up with stones, i.e. wind-loaded areas. Poor visibility makes it more difficult to recognize the danger zones.

On east-facing, south-facing and west-facing slopes below 2500 m, minor danger of glide-snow avalanches, particularly on steep, smooth grassy slopes.

Snowpack structure

Particularly on shady slopes at high altitudes, fresh snowdrifts are being deposited atop a very weak snowpack in wind-protected zones. The transported snow masses now blankets the fresh fallen snow from the beginning of the week, i.e. the metamorphosed (faceted) crystals which can be a weak layer. An unfavorable sequence of layers of faceted crystals and melt-freeze crusts is to be found especially on west-facing, north-facing and east-facing slopes above 2500 m. On steep grassy slopes, the snowpack glides away from the ground in some spots.

In general, there is still too little snow in the mountains of Salzburg for winter sports. Above 2000 m, the overall snowpack is 30-60 cm deep, but the snow is irregularly distributed. Wind-exposed zones are often bare of snow, gullies and bowls often filled to the brim. Backcountry tours confront a very rough ride, including contact with stones. In forest areas there is no cohesive, area-wide snowpack.

Weather

Sunday: In Tauern and Lungau Nockberge, overcast skies, limited visibility, a few raindrops or snowflakes. Further to the north, mostly dry. Initially a bit of sunshine, later on the visibility will deteriorate. In the foehn lanes, brisk southerly winds (up to 60 km/hr). At 2000 m, 0 to 3 degrees; at 3000 m: -4 degrees.

Monday: visibility often limited right from the start. In Tauern and Lungau Nockberge, a bit of light snowfall, elsewhere it will be dry. During the late afternoon, rainfall/snowfall will set in from the

Avalanche problems



Danger ratings



Expositions



04.12.2022 through 05.12.2022

southwest, snowfall level will descend to about 1100 by evening. Initially brisk southerly foehn wind, slackening off in the morning hours. At 2000 m: -1 to +1 degree; at 3000 m, -7 degrees.

Outlook

Starting on Tuesday: snowdrift masses will bond with layers beneath them, avalanche danger will decrease.

Avalanche problems



Danger ratings

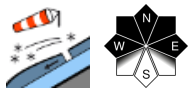
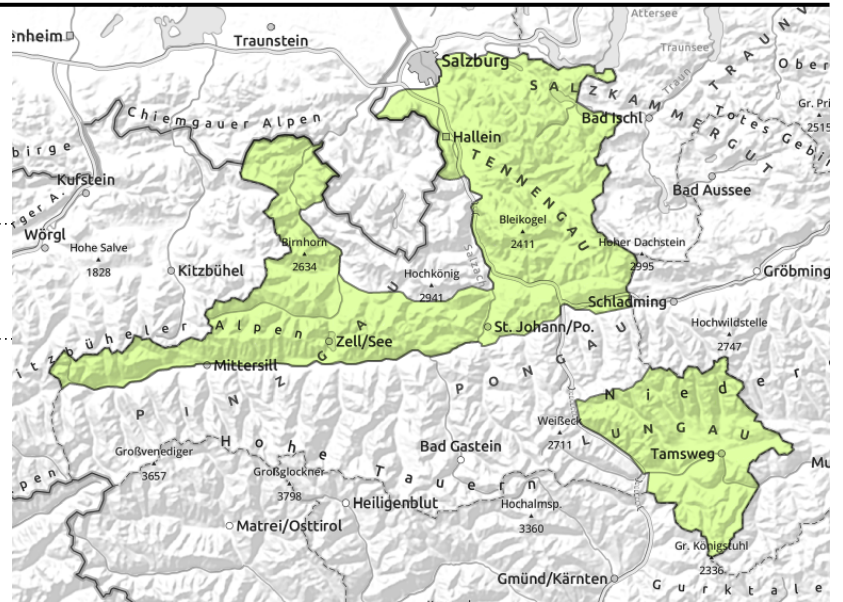


Expositions



04.12.2022 through 05.12.2022

Chiemgauer Alpen, Heutal, Reiteralpe, Loferer und Leoganger Steinberge, Oberpinzgauer Grasberge, Dientner Grasberge, Osterhorngruppe, Gamsfeldgruppe, Untersbergstock, Pongauer Grasberge, Nockberge, Niedere Tauern Süd, Tennengebirge, Gosaukamm, Kitzbüheler Alpen, Glemmtal



Mostly favourable situation

As a result of southerly winds, fresh snowdrift accumulations will form in isolated cases, mostly above 2000 m and generally in west-to-north-to-east facing terrain. In isolated cases, one single winter sports enthusiast can trigger an avalanche, but these will remain small. The risks of being swept along and forced to take a fall in steep terrain ($>40^\circ$) outweigh those of being buried in snow masses. Particularly on Sunday, due to poor visibility, the danger zones will be difficult to recognize.

Snowpack structure

As a result of southerly winds, loose snow is being transported and deposited on wind-protected shady slopes. The drifts are landing atop a loose snowpack surface consisting of fresh snow and faceted crystals which can in isolated cases be triggered.

For winter sports enthusiasts, there is still too little snow on the ground. On backcountry skiing tours, contact with the ground is certain.

Weather

Sunday: In Tauern and Lungau Nockberge, overcast skies, limited visibility, a few raindrops or snowflakes. Further to the north, mostly dry. Initially a bit of sunshine, later on the visibility will deteriorate. In the foehn lanes, brisk southerly winds (up to 60 km/hr). At 2000 m, 0 to 3 degrees; at 3000 m: -4 degrees.

Monday: visibility often limited right from the start. In Tauern and Lungau Nockberge, a bit of light snowfall, elsewhere it will be dry. During the late afternoon, rainfall/snowfall will set in from the southwest, snowfall level will descend to about 1100 by evening. Initially brisk southerly foehn wind, slackening off in the morning hours. At 2000 m: -1 to +1 degree; at 3000 m, -7 degrees.

Outlook

The small snowdrift masses will bond with the layers beneath them and no longer be at risk of triggering. Avalanche danger will remain low: Danger Level 1.

Translated by Jeffrey McCabe, www.creativtrans.com

Avalanche problems



Danger ratings



Expositions

