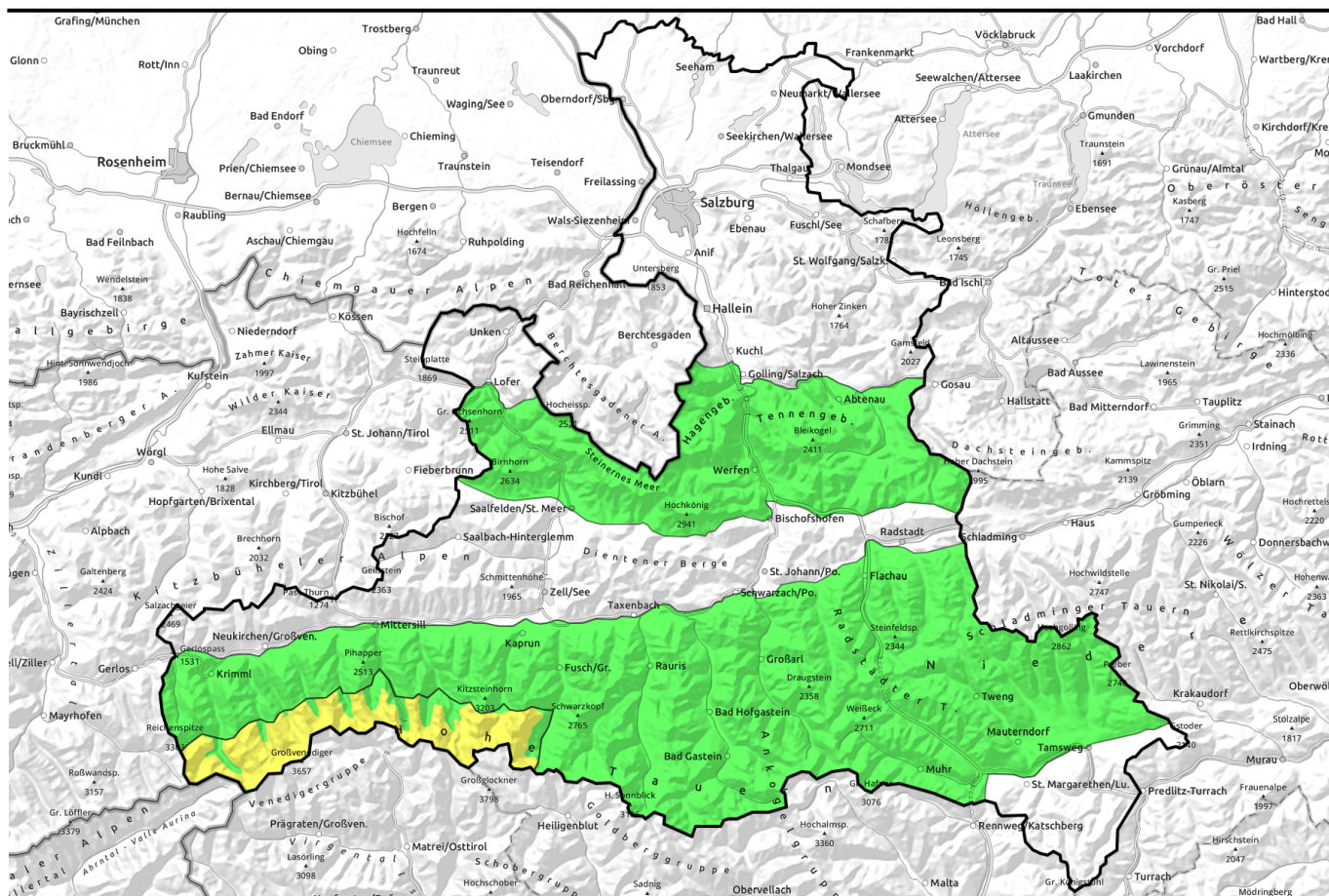


01.05.2022



Main danger: relevant fresh snow in western Hohe Tauern, variable weather, small/medium wet-snow avalanches. Final Avalanche Bulletin of winter season 2021/2022.

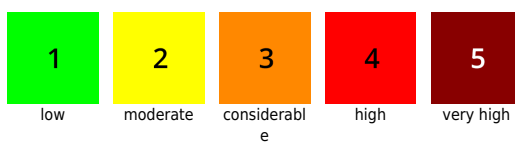
- Tennengebirge, Gosaukamm, Steinernes Meer, Hochkönig, Hagengebirge, Gölstock, Großvenedigergruppe Nord, Glocknergruppe Nord, Goldberggruppe Nord, Goldberggruppe Alpenhauptkamm, Niedere Tauern Alpenhauptkamm, Niedere Tauern Nord, Niedere Tauern Süd, Ankogelgruppe, Muhr, Loferer und Leoganger Steinberge

- 2300 m
 Großvenedigergruppe Alpenhauptkamm, Glocknergruppe Alpenhauptkamm

Avalanche problems



Danger ratings

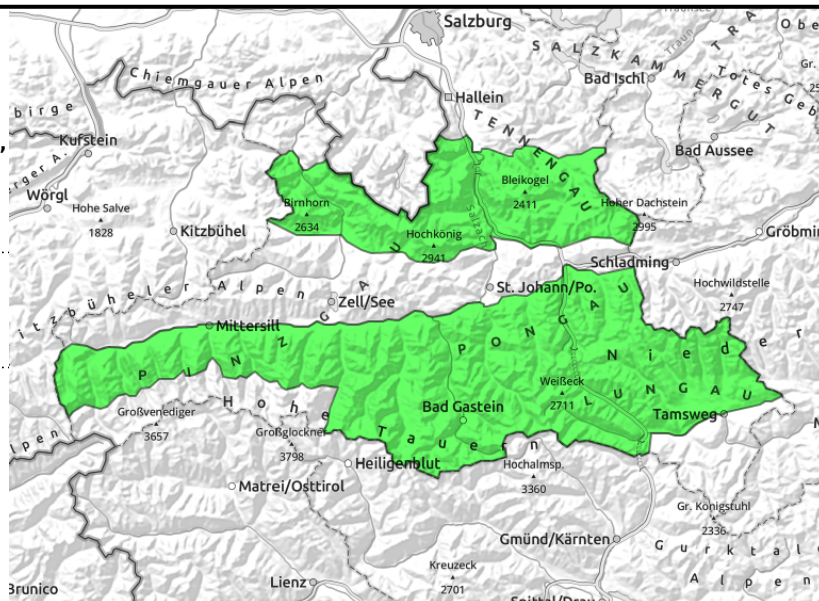


Expositions



01.05.2022

Tennengebirge, Gosaukamm, Steinernes Meer, Hochkönig, Hagengebirge, Göllstock, Großvenedigergruppe Nord, Glocknergruppe Nord, Goldberggruppe Nord, Goldberggruppe Alpenhauptkamm, Niedere Tauern Alpenhauptkamm, Niedere Tauern Nord, Niedere Tauern Süd, Ankogelgruppe, Muhr, Loferer und Leoganger Steinberge



small superficial wet-snow avalanches due to daytime warming above 2000 m

Slight wet-snow problem. FINAL Avalanche Bulletin of winter season 2021/2022.

Avalanche danger is LOW, only few avalanche prone locations. Small danger of superficial wet-snow slides and avalanches, due to daytime warming or rain showers, on extremely steep rocky slopes, triggering naturally. In high alpine regions, small moist slabs can be triggered in extremely steep terrain, esp. on north-facing slopes. Danger zones are small, potential triggerings small.

Snowpack structure

Above 2000 m, a bit of fresh snow was registered (5 cm, up to 10 cm towards the Tauern). The minor amount will swiftly become moist in the very diffuse radiation. The old snowpack beneath it is compact and isotherm. Old potential weak layers along the layer of Sahara dust are triggerable in isolated cases as the snowpack softens. Amounts of snow are variable, as is usual at the end of May.

Weather

On Saturday night, variably cloudy skies with showers and clouds.
 On Sunday, often poor visibility, repeated bouts of showers both in morning and in afternoon, with only brief bright intervals. During afternoon, short heavy thunderstorms are possible. Snowfall above 2000 m, little wind. At 2000 m: 0 degrees; at 3000 m: -6 degrees.
 On Monday, mostly adequate visibility. In afternoon, lots of convective cloud build-up, veiling the peaks in cloud. Rain showers and thunderstorms can be expected. Snowfall above 2300 m. At 2000 m: 2 degrees; at 3000 m: -4 degrees.

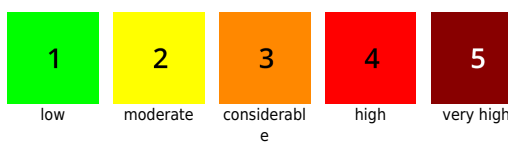
Outlook

Little change is expected in the avalanche situation. Variable weather conditions in the first week of May. Repeated rounds of snowfall up above, but followed by quickly disappearing snow on the slopes because the snow is dirty and the nights often overcast.

Avalanche problems



Danger ratings



Expositions



01.05.2022

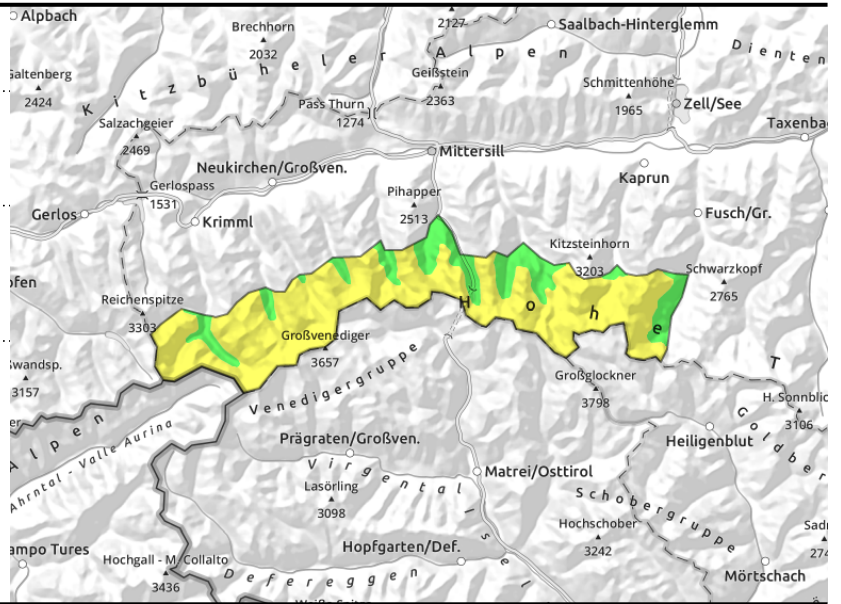
**Großvenedigergruppe Alpenhauptkamm,
Glocknergruppe Alpenhauptkamm**



small superficial wet-snow
avalanches due to daytime
warming



15-25 cm of fresh snow above
2300 m



**Wet-snow problem; fresh-snow problem further up. Final Avalanche
Bulletin of winter season 2021/2022.**

Avalanche danger is temporarily MODERATE due to fresh snow, at least above 2300m. Moderate danger of loose-snow and wet-snow avalanches. The fresh snow can trigger naturally or be triggered by skiers on very steep slopes in all aspects. Avalanches can be small or medium-sized. This applies to terrain above 2300m. In high alpine regions, small moist slabs can be triggered in extremely steep terrain, esp. on north-facing slopes. - also older snowdrift accumulations from the last 10 days - as a moist slab. Danger zones are small, potential triggerings small.

Snowpack structure

Above 2000 m the slopes have turned white again, with 10 cm of fresh snow and more. Above 2300 m, 15-25 cm widespread, with no wind. The fresh snow is bonding well with the snowpack beneath it, but quickly becomes moist in the diffuse radiation. The old snowpack is compact and isotherm. Old potential weak layers along the layer of Sahara dust are triggerable in isolated cases as the snowpack softens. Amounts of snow are variable, as is usual at the end of May.

Weather

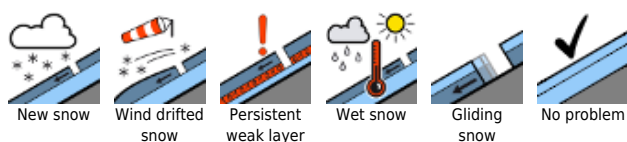
On Saturday night, variably cloudy skies with showers and clouds.
On Sunday, often poor visibility, repeated bouts of showers both in morning and in afternoon, with only brief bright intervals. During afternoon, short heavy thunderstorms are possible. Snowfall above 2000 m, little wind. At 2000 m: 0 degrees; at 3000 m: -6 degrees.
On Monday, mostly adequate visibility. In afternoon, lots of convective cloud build-up, veiling the peaks in cloud. Rain showers and thunderstorms can be expected. Snowfall above 2300 m. At 2000 m: 2 degrees; at 3000 m: -4 degrees.

Outlook

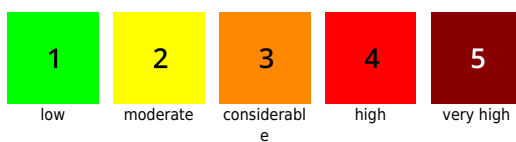
Little change is expected in the avalanche situation. Variable weather conditions in the first week of May. Repeated rounds of snowfall up above, but followed by quickly disappearing snow on the slopes because the snow is dirty and the nights often overcast.

Translated by Jeffrey McCabe, www.creativtrans.com

Avalanche problems



Danger ratings



Expositions

