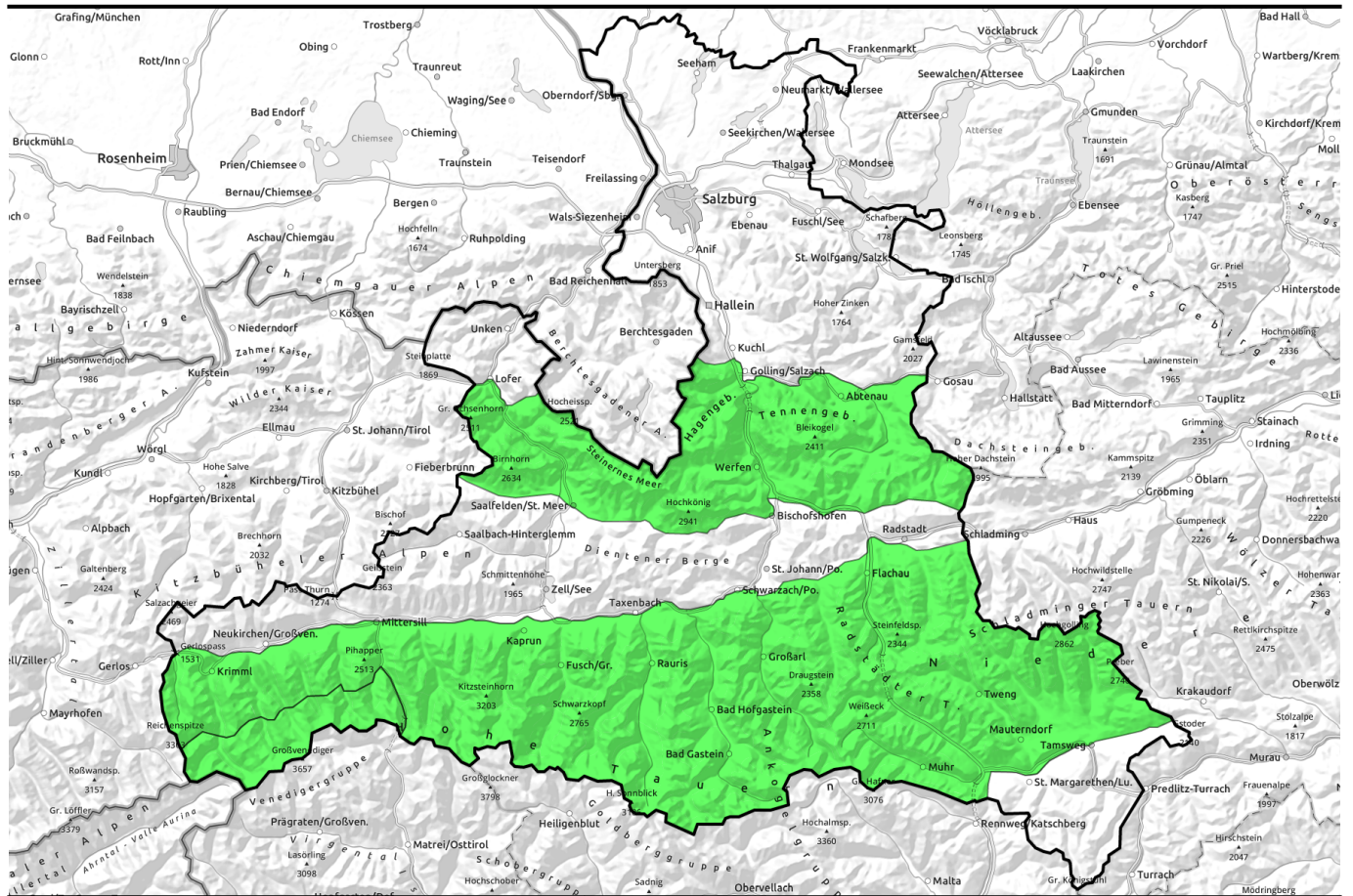


# 30.04.2022, morning



## Favorable conditions, but deteriorating weather conditions



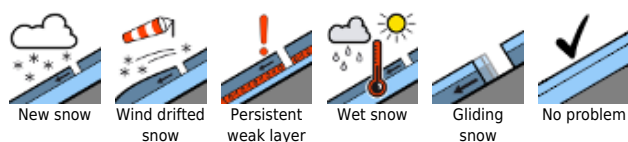
Tennengebirge, Gosaukamm, Steinernes Meer, Hochkönig, Hagengebirge, Göllstock, Großvenedigergruppe Nord, Glocknergruppe Nord, Goldberggruppe Nord, Goldberggruppe Alpenhauptkamm, Glocknergruppe Alpenhauptkamm, Niedere Tauern Alpenhauptkamm, Niedere Tauern Nord, Niedere Tauern Süd, Ankogelgruppe, Muhr, Loferer und Leoganger Steinberge



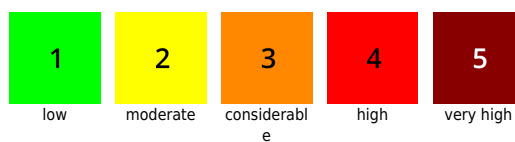
Großvenedigergruppe Alpenhauptkamm



### Avalanche problems



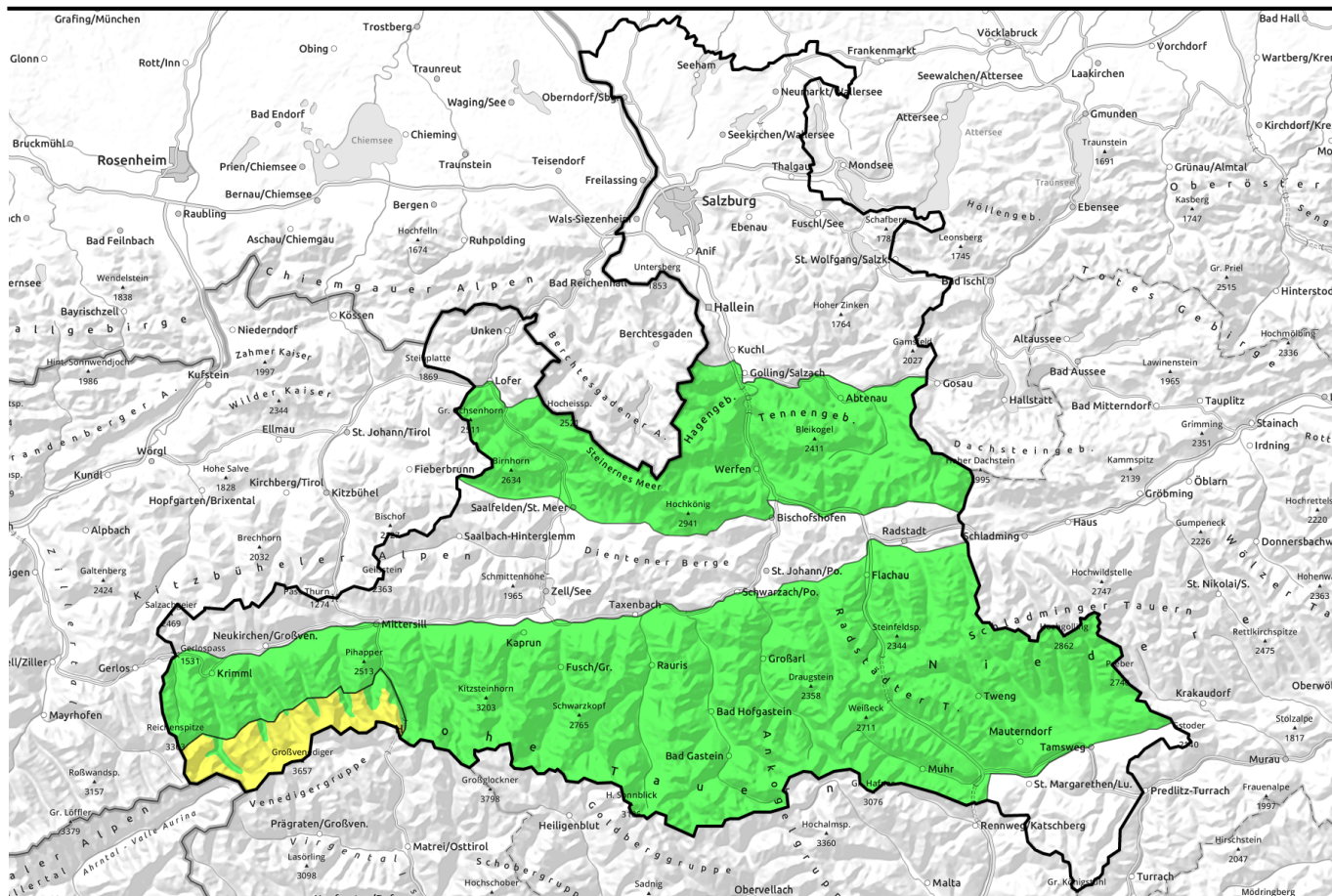
### Danger ratings



### Expositions



# 30.04.2022, afternoon



## Günstige Bedingungen, aber das Wetter verschlechtert sich



Tennengebirge, Gosaukamm, Steinernes Meer, Hochkönig, Hagengebirge, Göllstock, Großvenedigergruppe Nord, Glocknergruppe Nord, Goldberggruppe Nord, Goldberggruppe Alpenhauptkamm, Glocknergruppe Alpenhauptkamm, Niedere Tauern Alpenhauptkamm, Niedere Tauern Nord, Niedere Tauern Süd, Ankogelgruppe, Muhr, Loferer und Leoganger Steinberge

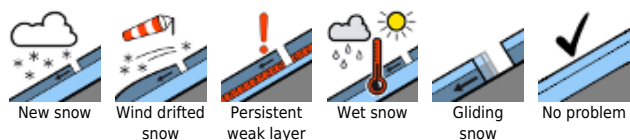


Großvenedigergruppe Alpenhauptkamm

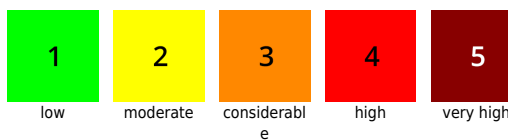


2400 m

### Avalanche problems



### Danger ratings

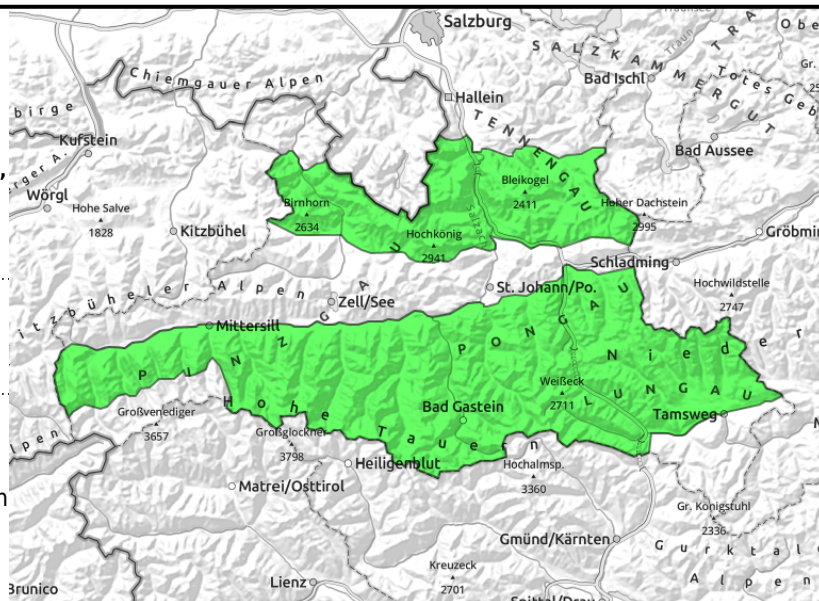


### Expositions



**30.04.2022**

Tennengebirge, Gosaukamm, Steinernes Meer, Hochkönig, Hagengebirge, Göllstock, Großvenedigergruppe Nord, Glocknergruppe Nord, Goldberggruppe Nord, Goldberggruppe Alpenhauptkamm, Glocknergruppe Alpenhauptkamm, Niedere Tauern Alpenhauptkamm, Niedere Tauern Nord, Niedere Tauern Süd, Ankogelgruppe, Muhr, Loferer und Leoganger Steinberge



small superficial wet-snow avalanches due to daytime warming in zones above 2000m

## Take advantage of the morning!

Avalanche danger is LOW all day long. Only few danger zones.

Some danger comes from near-surface wet-snow slides and avalanches (small-to-medium) which can trigger naturally due to daytime warming mostly on extremely steep, rocky slopes.

In high alpine regions above 2600 m, avoid the most recent snowdrift accumulations in extremely steep terrain. The risks of being swept along and forced to take a fall require alertness on north-facing slopes above 2400 m and on east-and-south facing slopes above 2800m.

First rainfall / snowfall in late afternoon and evening until darkness - not avalanche relevant.

## Snowpack structure

The most recent bout of fresh snow has metamorphosed and is well bonded with the base. In high alpine regions above 2600 m the near-surface snow on shady slopes is still dry; elsewhere there is a firm melt-freeze crust which turns to firn with sunshine and warmth, but not deeply.

The minor amount of fresh snow in late afternoon/evening will bond well with the base.

The old snowpack is compact and has no more reserves of cold (except on north-facing slopes above 2500m). Old potential weak layers along the Sahara-dust layer are not currently triggerable.

## Weather

On Friday night, clear skies despite thin cirrus clouds.

On Saturday, weather conditions will deteriorate during the day. Good visibility in the morning, some sunshine through high-altitude clouds, which will then become denser. As of midday, diffuse and gray. Risk of fog, some rain showers, a few thunderstorms will increase, esp. after 4:00 pm. Snowfall level at 2000 m. Only minor amounts of fresh snow (5-10 cm). Winds intensifying (30-40 km/hr). At 2000 m: 1-5 degrees; at 3000 m: -4 degrees.

On Saturday night, variably cloudy skies, isolated showers, lots of cloud.

On Sunday, often poor visibility, repeated rain showers in morning and afternoon, only brief bright intervals in between. In the afternoon, heavy showers and thunderstorms are possible. Snowfall level above 2000 m. At 2000 m: 0 degrees; at 3000 m: -6 degrees.

### Avalanche problems



New snow



Wind drifted snow



Persistent weak layer



Wet snow



Gliding snow



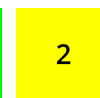
No problem

### Danger ratings



1

low



2

moderate



3

considerable



4

high



5

very high

### Expositions

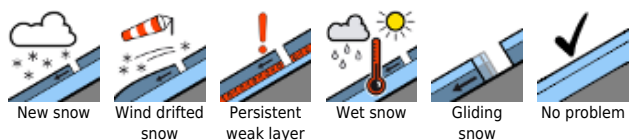


**30.04.2022**

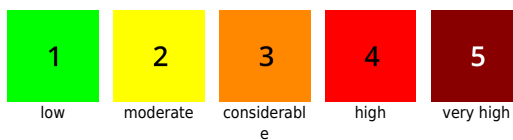
**Outlook**

On Sunday at high altitudes, possibly MODERATE danger due to fresh snow. Mostly LOW danger. Danger due to small near-surface wet-snow and loose-snow avalanches.

**Avalanche problems**



**Danger ratings**



**Expositions**



# 30.04.2022, morning

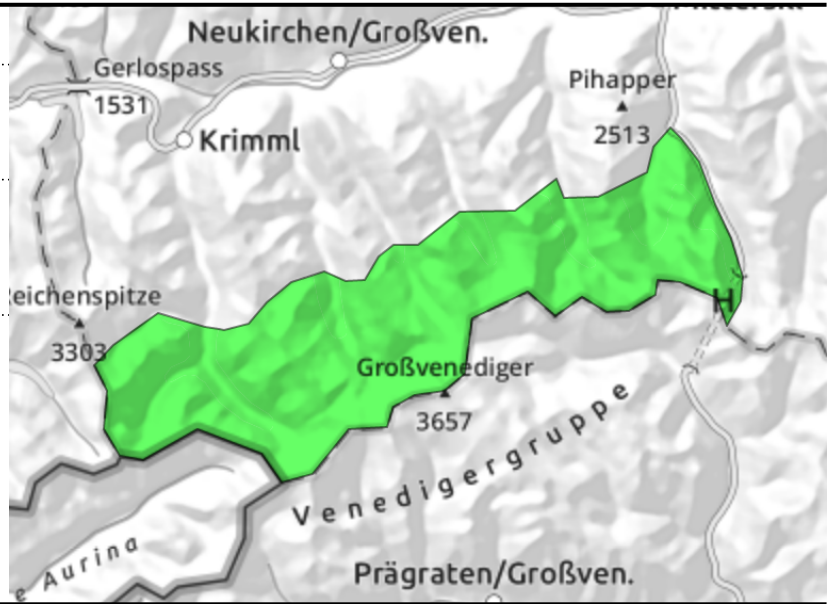
## Großvenedigergruppe Alpenhauptkamm



Kleine, oberflächliche Nassschneelawinen mit der Tageswärme



15 bis 20 cm Neuschnee am späten Nachmittag und Abend sind angesagt



## Snowpack structure

### Outlook

### Avalanche problems



New snow



Wind drifted snow



Persistent weak layer



Wet snow



Gliding snow



No problem

### Danger ratings



1

low



2

moderate



3

considerable



4

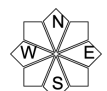
high



5

very high

### Expositions



# 30.04.2022, afternoon

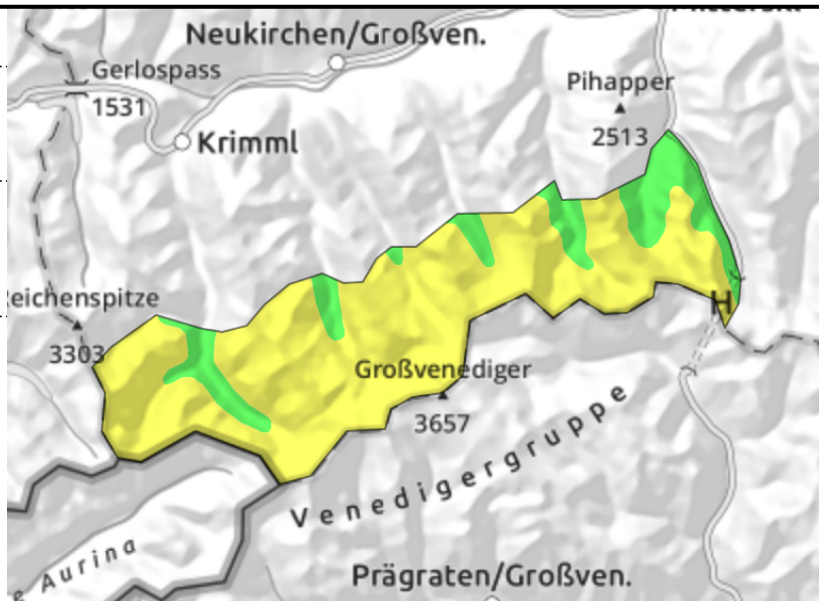
## Großvenedigergruppe Alpenhauptkamm



Kleine, oberflächliche Nassschneelawinen mit der Tageswärme



15 bis 20 cm Neuschnee am späten Nachmittag und Abend sind angesagt



## Snowpack structure

### Outlook

Translated by Jeffrey McCabe, [www.creativtrans.com](http://www.creativtrans.com)

### Avalanche problems



New snow



Wind drifted snow



Persistent weak layer



Wet snow



Gliding snow



No problem

### Danger ratings



1

low



2

moderate



3

considerabl  
e



4

high



5

very high

### Expositions

