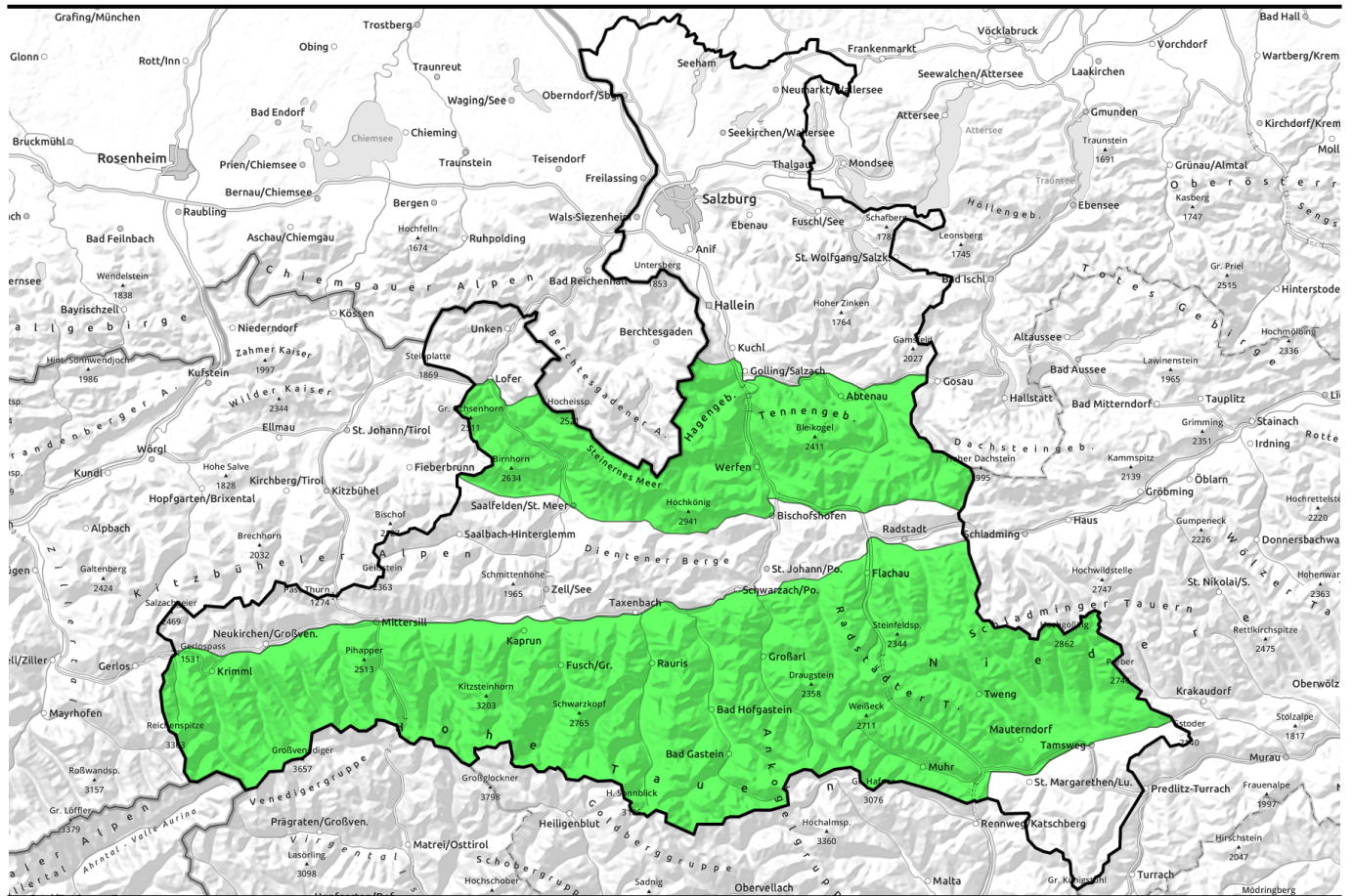


29.04.2022



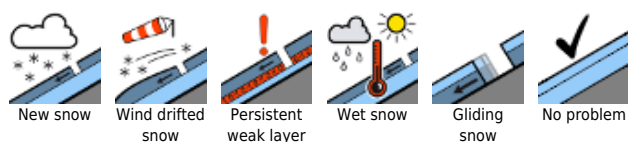
Favorable conditions, low avalanche danger



Tennengebirge, Gosaukamm, Steinernes Meer, Hochkönig, Hagengebirge, Gölstock, Loferer und Leoganger Steinberge, Großvenedigergruppe Nord, Großvenedigergruppe Alpenhauptkamm, Glocknergruppe Nord, Glocknergruppe Alpenhauptkamm, Goldberggruppe Nord, Niedere Tauern Nord, Niedere Tauern Alpenhauptkamm, Niedere Tauern Süd, Ankogelgruppe, Muhr, Goldberggruppe Alpenhauptkamm



Avalanche problems



Danger ratings

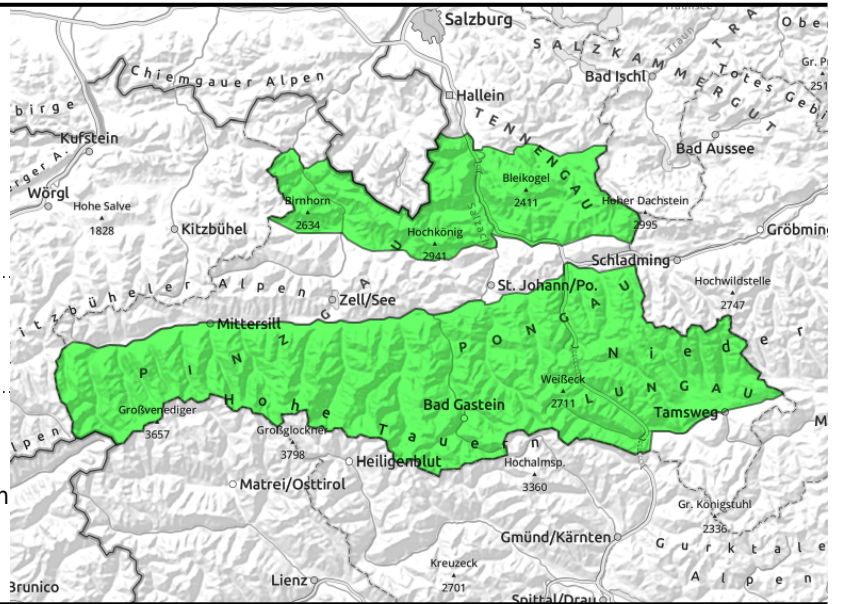


Expositions



29.04.2022

Tennengebirge, Gosaukamm, Steinernes Meer, Hochkönig, Hagengebirge, Göllstock, Loferer und Leoganger Steinberge, Großvenedigergruppe Nord, Großvenedigergruppe Alpenhauptkamm, Glocknergruppe Nord, Glocknergruppe Alpenhauptkamm, Goldberggruppe Nord, Niedere Tauern Nord, Niedere Tauern Alpenhauptkamm, Niedere Tauern Süd, Ankogelgruppe, Muhr, Goldberggruppe Alpenhauptkamm



small superficial wet-snow avalanches due to daytime warming in zones above 2000m

Stable melt-freeze encrusted snow - Small wet-snow avalanches due to daytime warming

Avalanche danger is LOW. Only few danger zones.

Some danger comes from near-surface wet-snow slides and avalanches (small-to-medium) which can trigger naturally due to daytime warming.

In high alpine regions above 2400 m, avoid the most recent snowdrift accumulations in extremely steep terrain. The risks of being swept along and forced to take a fall require alertness on north-facing slopes above 2400 m and on east-and-south facing slopes above 2800m.

Snowpack structure

The most recent bout of fresh snow has metamorphosed and is well bonded with the base. In high alpine regions above 2400 m the near-surface snow on shady slopes is still dry; elsewhere there is a firm melt-freeze crust which turns to firm with sunshine and warmth, but not deeply.

The old snowpack is compact and has no more reserves of cold (except on north-facing slopes above 2500m). Old potential weak layers along the Sahara-dust layer are not currently triggerable.

Weather

On Friday, following a night of star-studded skies, it will be sunny and clear with outstanding visibility and low air moisture. During the afternoon, some convective cloud-buildup. Light to moderate northerly winds at high altitude. At 2000m: 3 degrees; at 3000 m: -3 degrees.

On Friday night, star-studded skies. Good outgoing longwave radiation.

On Saturday, good visibility and sunshine, decent mountain weather. In the afternoon the visibility will become diffuse, towards evening the risk of rain showers (snow above 2200m) will increase. Winds will be no disturbance. At 2000 m: between 1 and 5 degrees; at 3000 m: -4 degrees.

Outlook

On Saturday: similar conditions.

On Sunday: conditions will be far more variable (also nocturnal skies on Saturday will no longer be clear).

Translated by Jeffrey McCabe, www.creativtrans.com

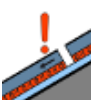
Avalanche problems



New snow



Wind drifted snow



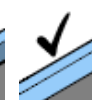
Persistent weak layer



Wet snow



Gliding snow



No problem

Danger ratings



1

low



2

moderate



3

considerable



4

high



5

very high

Expositions

