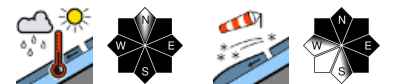


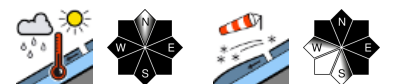
Loose-snow avalanches in steep terrain



Chiemgauer Alpen, Heutal, Reiteralpe, Kitzbüheler Alpen, Glemmtal, Oberpinzgauer Grasberge, Dientner Grasberge, Loferer und Leoganger Steinberge, Niedere Tauern Süd, Goldberggruppe Nord, Niedere Tauern Nord, Niedere Tauern Alpenhauptkamm, Großvenedigergruppe Nord, Glocknergruppe Nord, Tennengebirge, Gosaukamm



Glocknergruppe Alpenhauptkamm, Goldberggruppe Alpenhauptkamm, Großvenedigergruppe Alpenhauptkamm, Steinernes Meer, Hochkönig, Hagengebirge, Göllstock, Ankogelgruppe, Muhr



Avalanche problems



Danger ratings

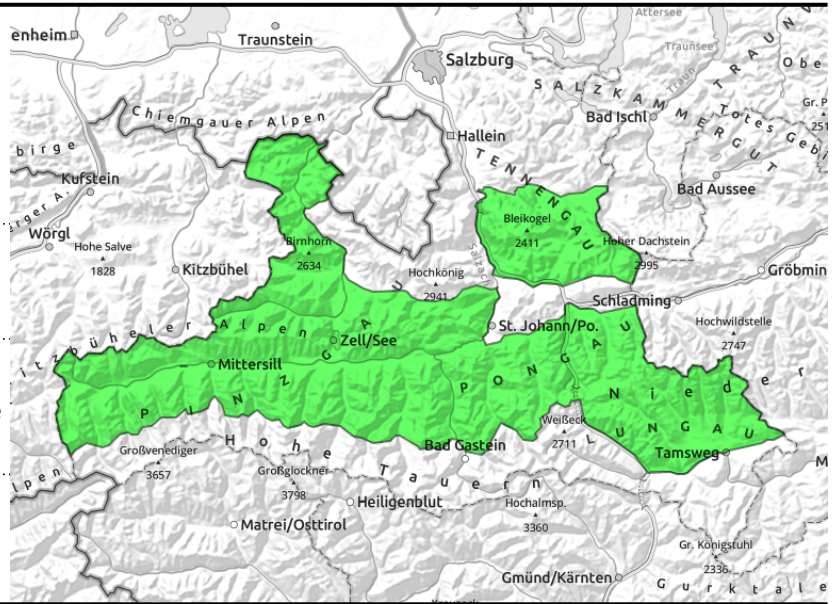


Expositions



28.04.2022

Chiemgauer Alpen, Heutal, Reiteralpe, Kitzbüheler Alpen, Glemmtal, Oberpinzgauer Grasberge, Dientner Grasberge, Loferer und Leoganger Steinberge, Niedere Tauern Süd, Goldberggruppe Nord, Niedere Tauern Nord, Niedere Tauern Alpenhauptkamm, Großvenedigergruppe Nord, Glocknergruppe Nord, Tennengebirge, Gosaukamm



superficial dry and wet loose-snow avalanches releasing due to sunshine



small shallow snowdrifts in high-altitude exposed spots

Naturally triggered loose-snow avalanches on steep slopes

LOW avalanche danger prevails. Near-surface wet (also dry, at high altitudes) loose-snow avalanches (mostly small, seldom medium) in extremely steep rocky terrain are the main danger. At high and high-alpine altitudes, especially on N/E facing slopes and in gullies, there are danger zones due to shallow snowdrift patches. Isolated naturally triggered glide-snow avalanches (small-to-medium) are possible. Risks of falling or being forced to fall due to blanketed rocks outweigh those of being buried in snow.

Snowpack structure

Atop a well consolidated base, 10-20 cm of fresh snow was registered at high altitudes; in exposed terrain it was transported by W/NW winds. Bonding of fresh snow/drifts to the old snowpack is generally good, but deteriorates with ascending altitude. The old snowpack is generally compact, but in isolated cases the melt-freeze layer has developed a weak layer with the Sahara dust at high and high-alpine altitudes. This layer is not triggerable, or if, then only with large additional loading, e.g. through a superficial avalanche.

Weather

On Thursday, frequent sunshine. Some convective cloud build-up is expected during the daytime, but visibility will remain adequate. Light to moderate northerly winds will be blowing. At 2000 m: -2 to +3 degrees; at 3000 m: -5 degrees.

On Friday, outstanding visibility and frequent sunshine. In the afternoon, thin cirrus clouds above summit level, and some harmless convective clouds. Light to moderate northerly winds. At 2000 m: +4 degrees; at 3000 m: -3 degrees.

Outlook

On Friday, following a night of clear skies, favorable conditions with a slight daytime danger cycle.

Avalanche problems



New snow



Wind drifted snow



Persistent weak layer



Wet snow



Gliding snow



No problem

Danger ratings



1

low



2

moderate



3

considerable



4

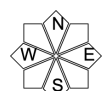
high



5

very high

Expositions

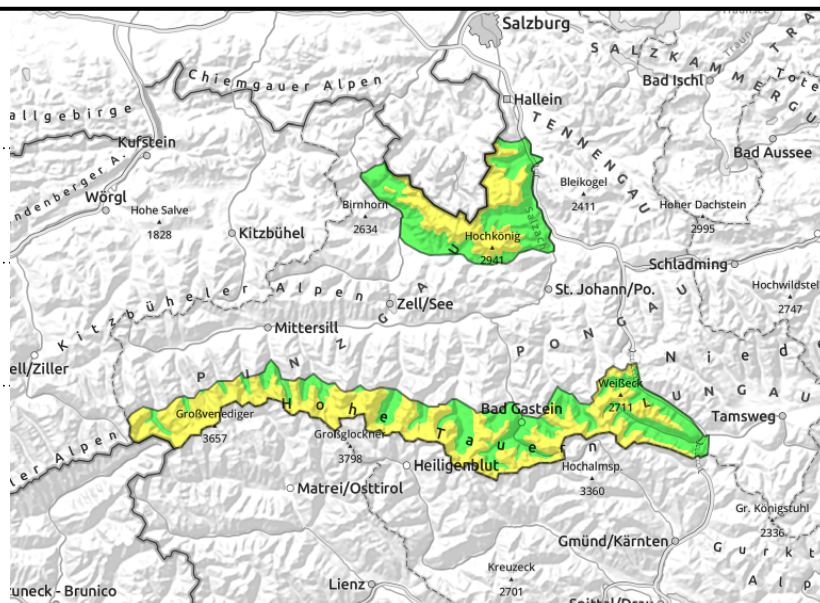


Glocknergruppe Alpenhauptkamm, Goldberggruppe Alpenhauptkamm, Großvenedigergruppe Alpenhauptkamm, Steinernes Meer, Hochkönig, Hagengebirge, Göllstock, Ankogelgruppe, Muhr



superficial loose-snow avalanches due to sunshine

thin, small snowdrift patches, near ridges, in gullies, high alpine



Naturally triggered loose-snow avalanches and some snowdrifts

Avalanche danger is MODERATE above 2400 m, below that altitude danger is LOW. Fresh snowdrifts have been deposited in gullies and north-facing bowls, often triggerable as a small-to-medium avalanche by minimum additional loading. Due to solar radiation and daytime warming, loose-snow and isolated slab avalanches or glide-snow avalanches (mostly small, seldom medium) can trigger in extremely steep terrain. Above 2400 m on shady slopes there are isolated danger zones where by large additional loading (a fall, stomping, superficial slab) a slab avalanche can trigger in the old snow which then can grow to large size.

Snowpack structure

Atop a well consolidated base, 10-20 cm of fresh snow was registered at high altitudes; in exposed terrain it was transported by W/NW winds. Bonding of fresh snow/drifts to the old snowpack is generally good, but deteriorates with ascending altitude. The old snowpack is generally compact, but in isolated cases the melt-freeze layer has developed a weak layer with the Sahara dust at high and high-alpine altitudes. This layer is not triggerable, or if, then only with large additional loading, e.g. through a superficial avalanche.

Weather

On Thursday, frequent sunshine. Some convective cloud build-up is expected during the daytime, but visibility will remain adequate. Light to moderate northerly winds will be blowing. At 2000 m: -2 to +3 degrees; at 3000 m: -5 degrees.

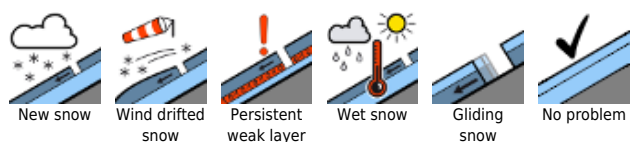
On Friday, outstanding visibility and frequent sunshine. In the afternoon, thin cirrus clouds above summit level, and some harmless convective clouds. Light to moderate northerly winds. At 2000 m: +4 degrees; at 3000 m: -3 degrees.

Outlook

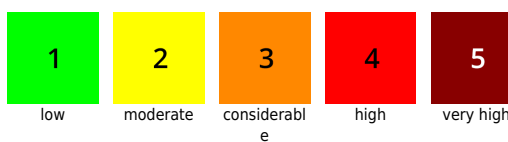
On Friday, following a night of clear skies, favorable conditions with a slight daytime danger cycle.

Translated by Jeffrey McCabe, www.creativtrans.com

Avalanche problems



Danger ratings



Expositions

