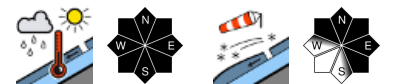


Fresh fallen snow at high altitudes, poor visibility



Chiemgauer Alpen, Heutal, Reiteralpe, Kitzbüheler Alpen, Glemmtal, Oberpinzgauer Grasberge, Dientner Grasberge, Loferer und Leoganger Steinberge, Niedere Tauern Süd, Goldberggruppe Nord, Niedere Tauern Nord, Niedere Tauern Alpenhauptkamm

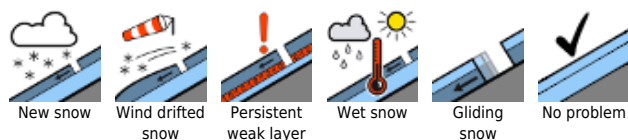


2000 m

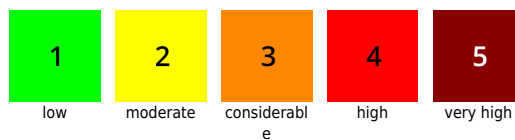
Glocknergruppe Alpenhauptkamm, Goldberggruppe Alpenhauptkamm, Großvenedigergruppe Alpenhauptkamm, Großvenedigergruppe Nord, Glocknergruppe Nord, Steinernes Meer, Hochkönig, Hagengebirge, Göllstock, Ankogelgruppe, Muhr, Tennengebirge, Gosaukamm



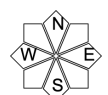
Avalanche problems



Danger ratings

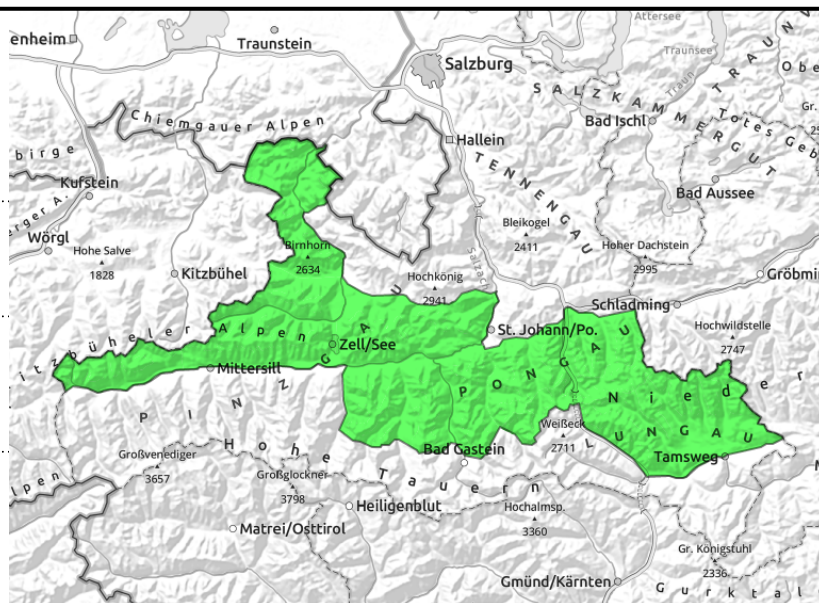


Expositions



27.04.2022

Chiemgauer Alpen, Heutal, Reiteralpe, Kitzbüheler Alpen, Glemmtal, Oberpinzgauer Grasberge, Dientner Grasberge, Loferer und Leoganger Steinberge, Niedere Tauern Süd, Goldberggruppe Nord, Niedere Tauern Nord, Niedere Tauern Alpenhauptkamm



as rainfall sets in, naturally triggered wet loose-snow avalanches



small shallow snowdrifts in high-altitude exposed spots

Naturally triggered wet loose-snow avalanches in extremely steep terrain

Avalanche danger is LOW, superficial moist loose-snow avalanches (mostly small, seldom medium-sized) in extremely steep terrain are the main danger. At high and high alpine altitudes, particularly on N/E facing slopes near ridges and in gullies thin snowdrift accumulations cause danger zones. In isolated cases, naturally triggered glide-snow avalanches (small-to-medium) are possible.

Snowpack structure

There has been 10-20 cm of fresh snow registered atop a predominantly well consolidated base, in exposed regions the snow is bonded by winds from W/NW. Snowdrifts are small, particularly on N/E facing slopes. Trigger-sensitivity increases with ascending altitude. Otherwise the snowpack is encrusted in early morning, then softens during the daytime. The old snowpack is generally compact, in places a weak layer has formed around the Sahara-dust encrusted layer, but is hardly triggered, except by large additional loading (e.g. an avalanche).

Weather

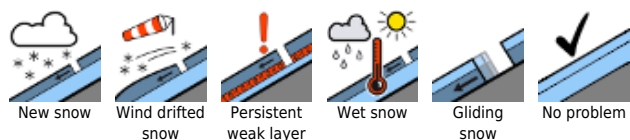
On Wednesday the peaks will often be veiled in clouds, visibility is reduced. Most rainfall/snowfall is expected in the Northern Alps. The snowfall level will ascend from 1200m to 1700 m in the course of the day. In high alpine regions, a moderate northerly wind will be blowing. At 2000 m: -4 to 0 degrees; at 3000 m, -8 degrees.

On Thursday, frequent sunshine. During the course of the day, a few convective clouds will accumulate, visibility will be adequate. A light to moderate northerly wind will be blowing. At 2000 m: -2 to +3 degrees; at 3000 m: -5 degrees.

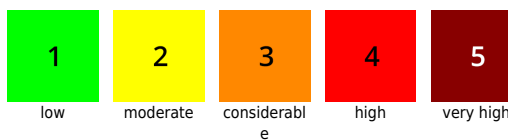
Outlook

On Thursday, numerous loose-snow avalanches are expected in sun-drenched steep terrain. Small snowdrift problem, the trigger-sensitivity will swiftly recede. Wet-snow problem at intermediate altitudes due to the fresh fallen snow rapidly becoming thoroughly wet.

Avalanche problems



Danger ratings



Expositions



27.04.2022

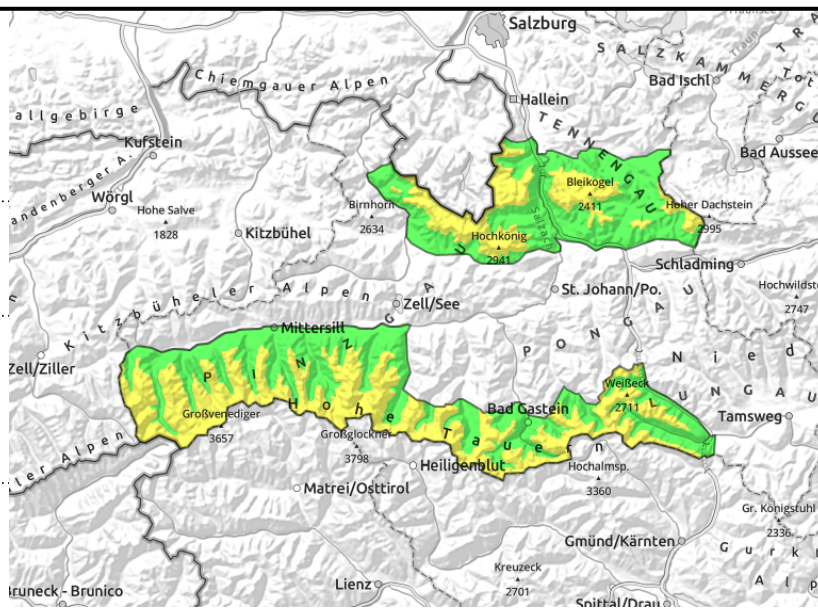
Glocknergruppe Alpenhauptkamm, Goldberggruppe Alpenhauptkamm, Großvenedigergruppe Alpenhauptkamm, Großvenedigergruppe Nord, Glocknergruppe Nord, Steinernes Meer, Hochkönig, Hagengebirge, Göllstock, Ankogelgruppe, Muhr, Tennengebirge, Gosaukamm



shallow small snowdrift patches, trigger-sensitivity increases with ascending altitude



hardly any reserves of cold, isolated naturally triggered avalanches



Fresh snowdrifts in high alpine regions, poor visibility

Avalanche danger is MODERATE above 2000 m, below that altitude danger is LOW. Fresh snowdrifts have been deposited in gullies and north-facing bowls, often triggerable as a small-to-medium avalanche by minimum additional loading. Poor visibility makes on-site evaluation more difficult. Due to diffuse radiation and daytime warming, loose-snow and isolated slab avalanches or glide-snow avalanches (mostly small, seldom medium) can trigger in extremely steep terrain. Above 2400 m on shady slopes there are isolated danger zones where by large additional loading (a fall, stomping, superficial slab) a slab avalanche can trigger in the old snow which then can grow to large size.

Snowpack structure

There has been 10-25 cm of fresh snow registered atop a predominantly well consolidated base, in exposed regions the snow is bonded by winds from W/NW. Snowdrifts are small, particularly on N/E facing slopes. Trigger-sensitivity increases with ascending altitude. Otherwise the snowpack is encrusted in early morning, then softens during the daytime. The old snowpack is generally compact, in places a weak layer has formed around the Sahara-dust encrusted layer, but is hardly triggered, except by large additional loading (e.g. an avalanche).

Weather

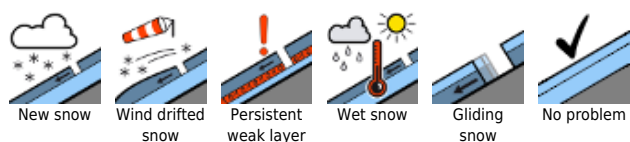
On Wednesday the peaks will often be veiled in clouds, visibility is reduced. Most rainfall/snowfall is expected in the Northern Alps. The snowfall level will ascend from 1200m to 1700 m in the course of the day. In high alpine regions, a moderate northerly wind will be blowing. At 2000 m: -4 to 0 degrees; at 3000 m, -8 degrees.

On Thursday, frequent sunshine. During the course of the day, a few convective clouds will accumulate, visibility will be adequate. A light to moderate northerly wind will be blowing. At 2000 m: -2 to +3 degrees; at 3000 m: -5 degrees.

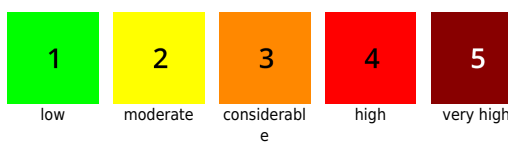
Outlook

On Thursday, numerous loose-snow avalanches are expected in sun-drenched steep terrain. Small snowdrift problem, the trigger-sensitivity will swiftly recede. Wet-snow problem at intermediate altitudes due to the fresh fallen snow rapidly becoming thoroughly wet.

Avalanche problems



Danger ratings



Expositions



27.04.2022

Translated by Jeffrey McCabe, www.creativtrans.com

Avalanche problems



New snow



Wind drifted
snow



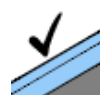
Persistent
weak layer



Wet snow



Gliding
snow



No problem

Danger ratings



1

low



2

moderate



3

considerabl
e



4

high



5

very high

Expositions

