

Rainfall/snowfall in afternoon



Chiemgauer Alpen, Heutal, Reiteralpe, Kitzbüheler Alpen, Glemmtal, Oberpinzgauer Grasberge, Dientner Grasberge, Loferer und Leoganger Steinberge, Niedere Tauern Süd, Tennengebirge, Gosaukamm, Steinernes Meer, Hochkönig, Hagengebirge, Göllstock, Großvenedigergruppe Nord, Glocknergruppe Nord, Goldberggruppe Nord, Niedere Tauern Nord, Niedere Tauern Alpenhauptkamm



Glocknergruppe Alpenhauptkamm, Goldberggruppe Alpenhauptkamm, Großvenedigergruppe Alpenhauptkamm, Ankogelgruppe, Muhr



Avalanche problems



Danger ratings

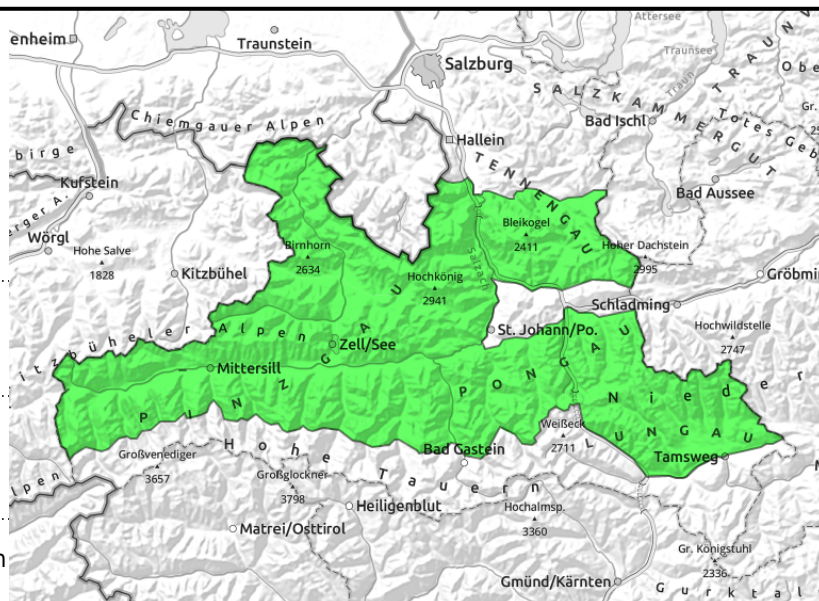


Expositions



26.04.2022

Chiemgauer Alpen, Heutal, Reiteralpe, Kitzbüheler Alpen, Glemmtal, Oberpinzgauer Grasberge, Dientner Grasberge, Loferer und Leoganger Steinberge, Niedere Tauern Süd, Tennengebirge, Gosaukamm, Steinernes Meer, Hochkönig, Hagengebirge, Göllstock, Großvenedigergruppe Nord, Glocknergruppe Nord, Goldberggruppe Nord, Niedere Tauern Nord, Niedere Tauern Alpenhauptkamm



as rain sets in



small shallow snowdrifts in high exposed places

Few danger zones, less favourable in afternoon

Avalanche danger is LOW, with daytime increase in danger within this level. Superficial moist loose-snow avalanches (mostly small, seldom medium-sized) in extremely steep terrain are the main danger, though the risks increase as showers set in. At high and high alpine altitudes, particularly on N/E facing slopes near ridges and in gullies thin snowdrift accumulations cause danger zones. In isolated cases, naturally triggered glide-snow avalanches (small-to-medium) are possible.

Snowpack structure

In high-altitude wind-exposed zones the snowpack is often hard-compacted oder windblown, in the Northern Alps a few centimetres of fresh snow lie atop of it. Fresh drifts occur in high alpine regions on N/E facing slopes, elsewehre the snowpack is encrusted in early morning and softens during the daytime. In the afternoon, rainfall can burden the stability of the snowpack, though the reserves are few. At high altitudes the fresh snow blankets the older signs of wind impact. The old snowpack is generally compact, in places a weak layer has formed around the Sahara-dust encrusted layer, but is hardly triggered, except by large additional loading (e.g. an avalanche).

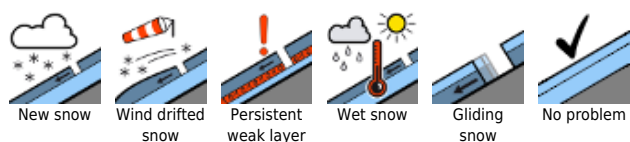
Weather

On Monday night, skies will initially be partly cloudy, then heavier cloud cover will move in. During the day on Tuesday, most of the peaks will be veiled in clouds. At midday heavy rainfall, snow showers and graupel showers will spread (snowfall level at 1500-2000m). At 2000 m: 0 degrees; at 3000 m: -6 degrees. Moderate S/W winds. By Tuesday evening, 5-15 cm of fresh snow are anticipated. On Wednesday, heavy cloud cover, intermittent rainfall or snowfall (snowfall level ascending from 1200 m to 1700m during the day). At 2000 m: -3 to 0 degrees; at 3000 m: -10 to -6 degrees.

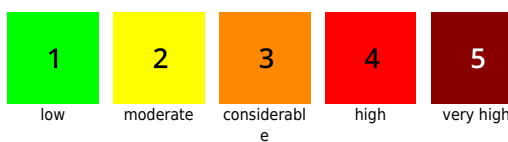
Outlook

Caution: on Wednesday at high and high-alpine altitudes, snowdrift problem, particularly in extended eastern aspects and in gullies. In extremely steep zones, naturally triggered small loose-snow avalanches are possible.

Avalanche problems



Danger ratings

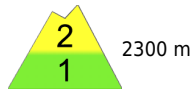


Expositions



26.04.2022

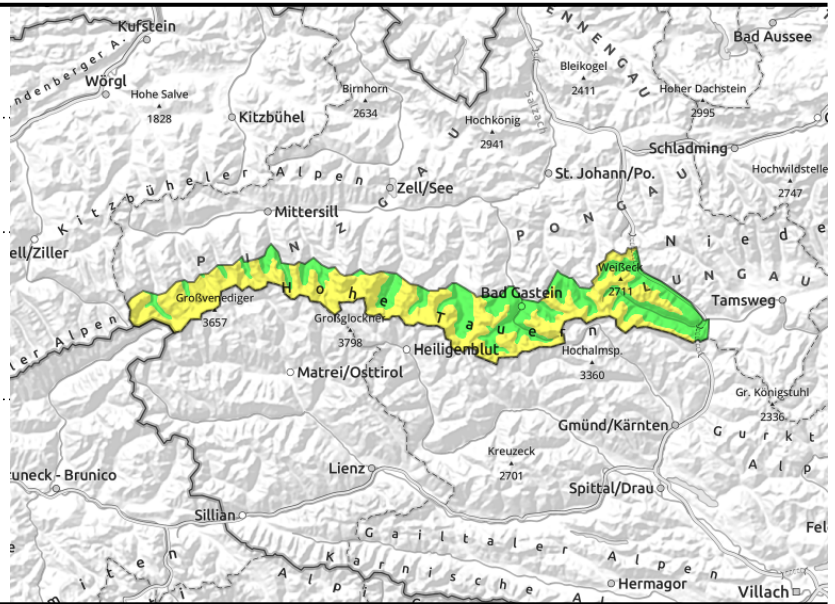
Glocknergruppe Alpenhauptkamm, Goldberggruppe Alpenhauptkamm, Großvenedigergruppe Alpenhauptkamm, Ankogelgruppe, Muhr



shallow, small snowdrift patches, triggerability increases with ascending altitude



hardly any reserves of cold, isolated naturally triggered avalanches



Fresh snowdrifts in high alpine regions, poor visibility

Avalanche danger is MODERATE above 2300 m, below that altitude danger is LOW. Fresh snowdrifts have been deposited in gullies and north-facing bowls, often triggerable as a small-to-medium avalanche by minimum additional loading. Poor visibility makes on-site evaluation more difficult. Due to diffuse radiation and daytime warming, loose-snow and isolated slab avalanches or glide-snow avalanches (mostly small, seldom medium) can trigger in extremely steep terrain. Above 2400 m on shady slopes there are isolated danger zones where by large additional loading (a fall, stomping, superficial slab) a slab avalanche can trigger in the old snow which then can grow to large size.

Snowpack structure

The snowpack at high altitudes shows pronounced effects of the storm-strength southerly foehn winds, often compacted or bonded as snowdrifts. The old snowpack is generally compact, but without reserves of cold. In isolated cases a weak layer has formed around the layer of Sahara dust, but it is not likely to trigger but in exceptional cases.

Weather

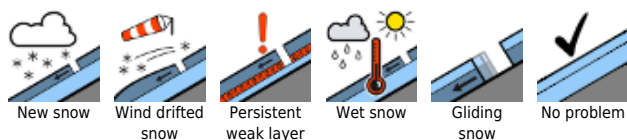
On Monday night, skies will initially be partly cloudy, then heavier cloud cover will move in. During the day on Tuesday, most of the peaks will be veiled in clouds. At midday heavy rainfall, snow showers and graupel showers will spread (snowfall level at 1500-2000m). At 2000 m: 0 degrees; at 3000 m: -6 degrees. Moderate S/W winds. By Tuesday evening, 5-15 cm of fresh snow are anticipated. On Wednesday, heavy cloud cover, intermittent rainfall or snowfall (snowfall level ascending from 1200 m to 1700m during the day). At 2000 m: -3 to 0 degrees; at 3000 m: -10 to -6 degrees.

Outlook

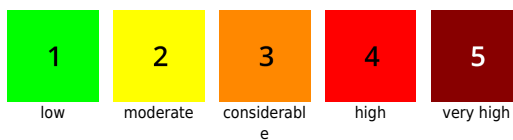
Caution: on Wednesday at high and high-alpine altitudes, snowdrift problem, particularly in extended eastern aspects and in gullies. In extremely steep zones, naturally triggered small loose-snow avalanches are possible.

Translated by Jeffrey McCabe, www.creativtrans.com

Avalanche problems



Danger ratings



Expositions

