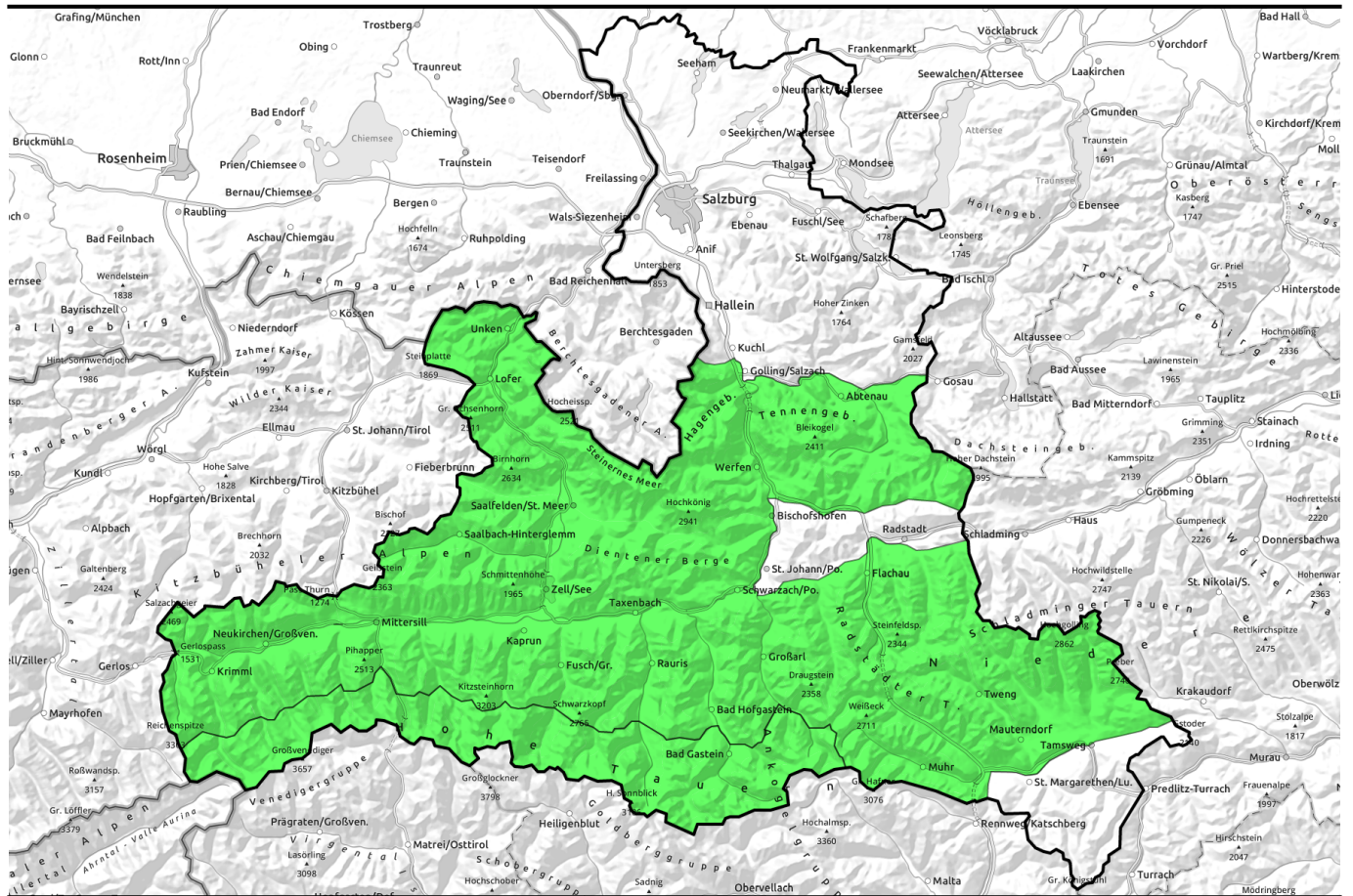


23.04.2022



Overcast skies, light precipitation from the south, isolated danger zones



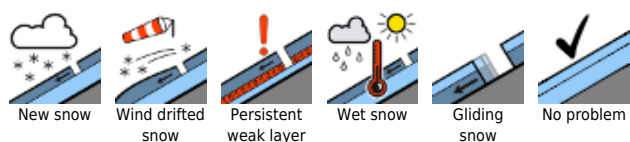
Chiemgauer Alpen, Heutal, Reiteralpe, Kitzbüheler Alpen, Glemmtal, Oberpinzgauer Grasberge, Dientner Grasberge, Goldberggruppe Nord, Loferer und Leoganger Steinberge, Glocknergruppe Nord, Großvenedigergruppe Nord, Niedere Tauern Süd, Ankogelgruppe, Muhr, Niedere Tauern Nord, Niedere Tauern Alpenhauptkamm, Tennengebirge, Gosaukamm, Steinernes Meer, Hochkönig, Hagengebirge, Gölstock



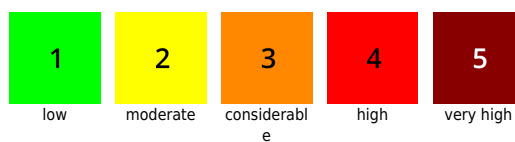
Glocknergruppe Alpenhauptkamm, Goldberggruppe Alpenhauptkamm, Großvenedigergruppe Alpenhauptkamm



Avalanche problems



Danger ratings

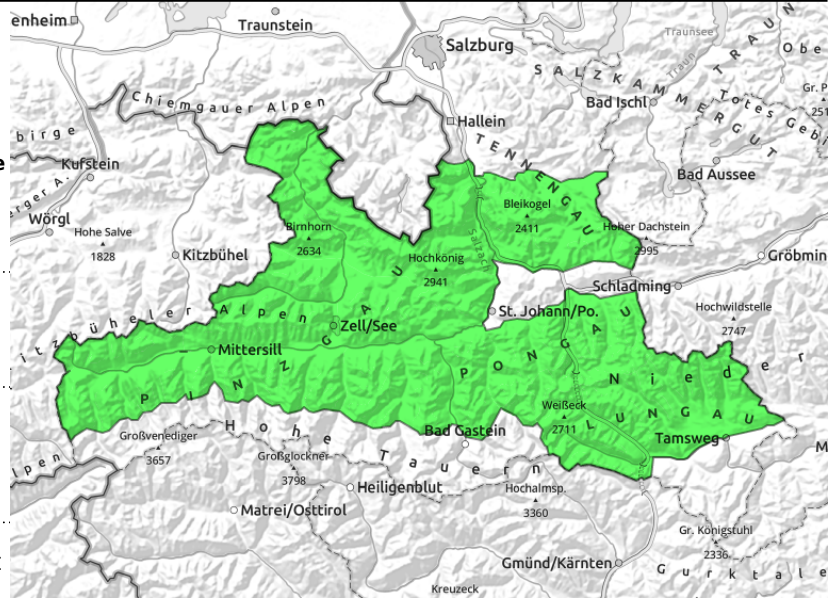


Expositions



23.04.2022

Chiemgauer Alpen, Heutal, Reiteralpe, Kitzbüheler Alpen, Glemmtal, Oberpinzgauer Grasberge, Dientner Grasberge, Goldberggruppe Nord, Loferer und Leoganger Steinberge, Glocknergruppe Nord, Großvenedigergruppe Nord, Niedere Tauern Süd, Ankogelgruppe, Muhr, Niedere Tauern Nord, Niedere Tauern Alpenhauptkamm, Tennengebirge, Gosaukamm, Steinernes Meer, Hochkönig, Hagengebirge, Gölstock



daytime loss of firmness, reinforced by afternoon showers



small ridgeline shallow drifts at high altitudes

Superficial moist loose-snow avalanches in extremely steep terrain

Avalanche danger is LOW, but will increase within that level during the course of the day. Superficial moist loose-snow avalanches (mostly small, seldom medium-sized) in extremely steep terrain are the main danger, though the risks of being swept along and falling outweigh those of being buried in snow. At high and high alpine altitudes, particularly on N/E facing slopes near ridges and in gullies thin snowdrift accumulations cause danger zones. In isolated cases, naturally triggered glide-snow avalanches (small-to-medium) are possible.

Snowpack structure

Only on north-facing slopes and in high alpine regions is there still loosely packed snow, elsewhere the snowpack is encrusted in early morning, softening during the daytime. Showers during the day can burden the stability of the snowpack. The old snowpack is largely compact, in places a weak layer has formed around the Sahara-dust encrusted layer, but is hardly triggered, except by large additional loading (e.g. an avalanche).

Weather

On Friday night, skies will be heavily overcast. On Saturday in the Lungau, cloudy skies from the start. Further north, visibility is better, southerly foehn wind will create sunny phases before cloud cover moves in again. In the Tauern region, foehn will intensify (40-60-km/hr in afternoon), elsewhere it will not disturb. In the Northern Alps, isolated showers in the afternoon, even thunderstorms are possible. At 2000m: 1-5 degrees.

On Saturday night in the Tauern and Northern Alps, strong-to-stormy southerly foehn winds accompanied by heavy cloud cover. Further north, particularly brighter skies. During the day on Sunday, sunshine and clouds. Foehn will slacken off gradually. In the Northern Alps, isolated showers and thunderstorms are possible during the afternoon. At 2000 m: 0-3 degrees.

Outlook

On Sunday, the wet-snow problem will dominate in the daytime danger cycle, reinforced if there are showers. At high/high alpine altitudes the fresh snowdrifts on north-facing slopes and in gullies can

Avalanche problems



New snow



Wind drifted snow



Persistent weak layer



Wet snow



Gliding snow



No problem

Danger ratings



1

low



2

moderate



3

considerable



4

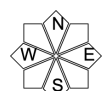
high



5

very high

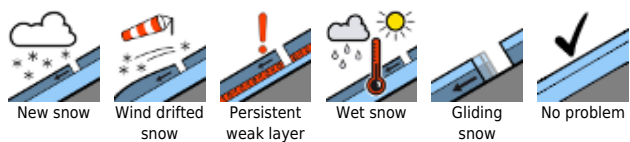
Expositions



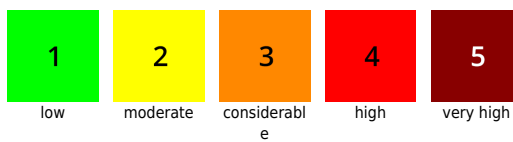
23.04.2022

generate small danger zones for slab avalanches.

Avalanche problems



Danger ratings



Expositions



23.04.2022

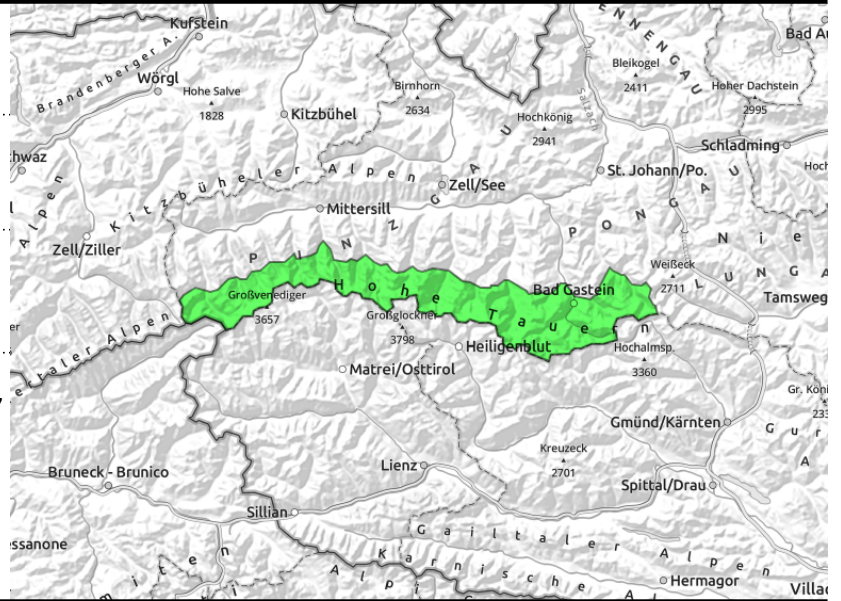
Glocknergruppe Alpenhauptkamm, Goldberggruppe Alpenhauptkamm, Großvenedigergruppe Alpenhauptkamm



hardly any reserves of cold, with diffuse radiation



small ridgeline spots, in gullies, steep bowls



Superficial avalanches in extremely steep terrain, small snowdrifts

Avalanche danger is LOW. Due to diffuse radiation and daytime warming, loose-snow avalanches in isolated slab avalanches and glide-snow avalanches (mostly small, seldom medium-sized) can trigger. Older snowdrifts are evident mostly near ridges: mostly shallow, triggerable on N/E facing slopes. Above 2400 m on shady slopes there are isolated avalanche prone locations, triggerable by large additional loading (a fall, stomping, etc.) as a slab, which could then grow to large size.

Snowpack structure

The snowpack has - at most - a breakable melt-freeze crust which rapidly softens during the day. On north-facing slopes and in high alpine regions is there still loosely packed snow, elsewhere the snowpack is encrusted in early morning, softening during the daytime. The old snowpack is largely compact, in places a weak layer has formed around the Sahara-dust encrusted layer, but is hardly triggered, except by large additional loading (e.g. an avalanche).

Weather

On Friday night, skies will be heavily overcast. On Saturday in the Lungau, cloudy skies from the start. Further north, visibility is better, southerly foehn wind will create sunny phases before cloud cover moves in again. In the Tauern region, foehn will intensify (40-60-km/hr in afternoon), elsewhere it will not disturb. Hardly any precipitation. At 2000m: 1-5 degrees; at 3000 m: -3 degrees.

On Saturday night, storm-strength southerly foehn, gusts well over 100 km/hr plus heavy clouds. On Sunday, sunshine and clouds will take turns. Foehn will be blowing in early hours at 80-100 km/hr, then gradually slacken off. At 2000 m: 0-3 degrees; at 3000 m: -7 degrees.

Outlook

In high alpine regions on Sunday, fresh snowdrift accumulations generated by southerly foehn winds deposited on north-facing slopes and in gullies may be prone to triggering. Apart from high alpine regions, the wet-snow problem will persist.

Translated by Jeffrey McCabe, www.creativtrans.com

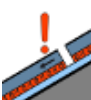
Avalanche problems



New snow



Wind drifted snow



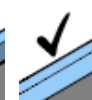
Persistent weak layer



Wet snow

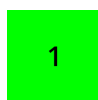


Gliding snow



No problem

Danger ratings



1

low



2

moderate



3

considerable



4

high



5

very high

Expositions

