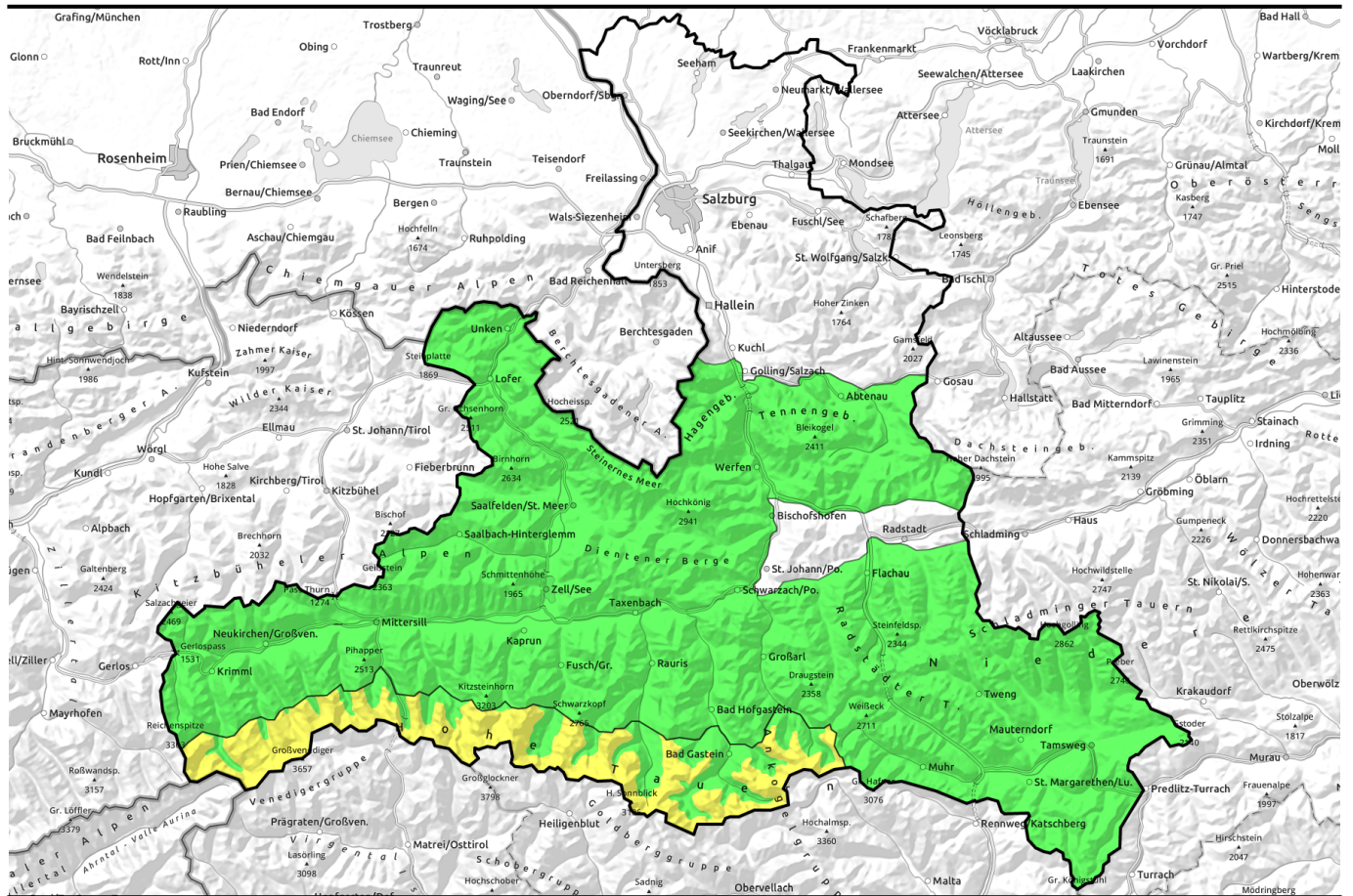


21.04.2022



Slight daytime danger cycle above 2500 m. Moderate snowdrift problem/persistent weak layer on Main Alpine Ridge

	<p>Chiemgauer Alpen, Heutal, Reiteralpe, Kitzbüheler Alpen, Glemmtal, Oberpinzgauer Grasberge, Dientner Grasberge, Nockberge, Goldberggruppe Nord, Loferer und Leoganger Steinberge, Glocknergruppe Nord, Großvenedigergruppe Nord, Niedere Tauern Süd, Ankogelgruppe, Muhr, Niedere Tauern Alpenhauptkamm, Tennengebirge, Gosaukaten, Steinernes Meer, Hochkönig, Hagengebirge, Göllstock</p>	
	<p>2500 m Glocknergruppe Alpenhauptkamm, Goldberggruppe Alpenhauptkamm, Großvenedigergruppe Alpenhauptkamm</p>	

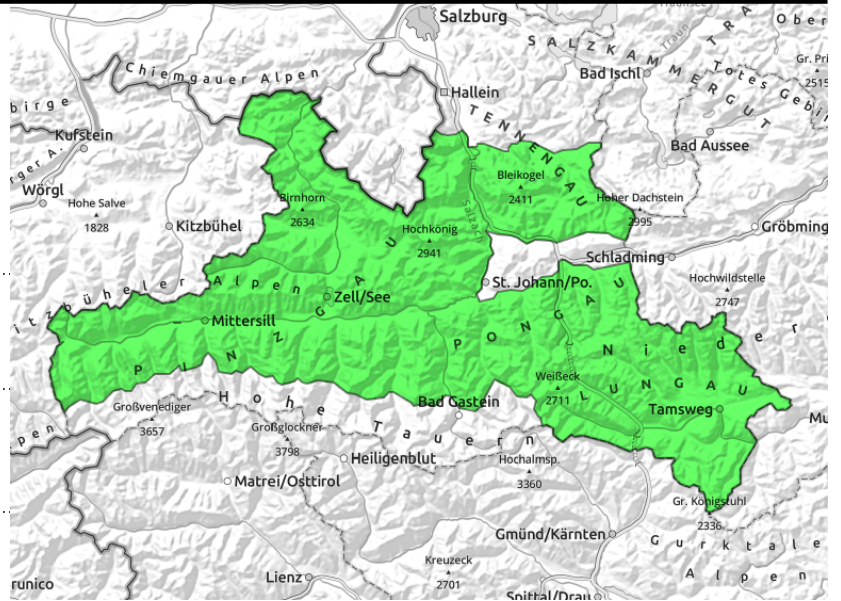
Avalanche problems

Danger ratings

Expositions

21.04.2022

Chiemgauer Alpen, Heutal, Reiteralpe, Kitzbüheler Alpen, Glemmtal, Oberpinzgauer Grasberge, Dientner Grasberge, Nockberge, Goldberggruppe Nord, Loferer und Leoganger Steinberge, Glocknergruppe Nord, Großvenedigergruppe Nord, Niedere Tauern Süd, Ankogelgruppe, Muhr, Niedere Tauern Nord, Niedere Tauern Alpenhauptkamm, Tennengebirge, Gosaukamm, Steinernes Meer, Hochkönig, Hagengebirge, Göllstock



slight daytime cycle



near ridges, thin drifts at high altitudes

Superficial moist loose-snow avalanches in extremely steep terrain

LOW avalanche danger all day long

Main danger: superficial loose-snow avalanches (mostly small) on extremely steep slopes. But the risk of being swept along and falling outweighs that of being buried in snow. At high altitudes, there are small snowdrift patches near ridges.

Isolated glide-snow avalanches are possible.

Snowpack structure

The snowpack has a firm melt-freeze crust in early morning which softens during the daytime. On north-facing slopes there is still loose snow. The old snowpack is generally compact, in isolated cases with a brownish layer of Sahara dust at high and high alpine altitudes which constitutes a weak layer, but currently not triggerable or, to be exact, a triggered avalanche cannot fracture down deeper.

Weather

On Thursday morning following a night of clear skies, sunny and good visibility. As of midday, convective cloud build-up, irritating E/S winds will arise. At 2000 m: 0 to 3 degrees.

Skies on Thursday night will be partially overcast.

On Friday, lots of cloud, the high peaks shrouded in fog, some rain/snow showers are possible. At 2000 m: 1-4 degrees. In the afternoon, some irritating SE wind.

Outlook

On Friday and over the weekend, lots of clouds and rain showers will dominate from the start (wet-snow problem). There is not enough snow for large-sized avalanches.

Avalanche problems



New snow



Wind drifted snow



Persistent weak layer



Wet snow



Gliding snow



No problem

Danger ratings



1

low



2

moderate



3

considerable



4

high



5

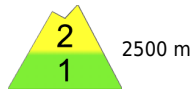
very high

Expositions



21.04.2022

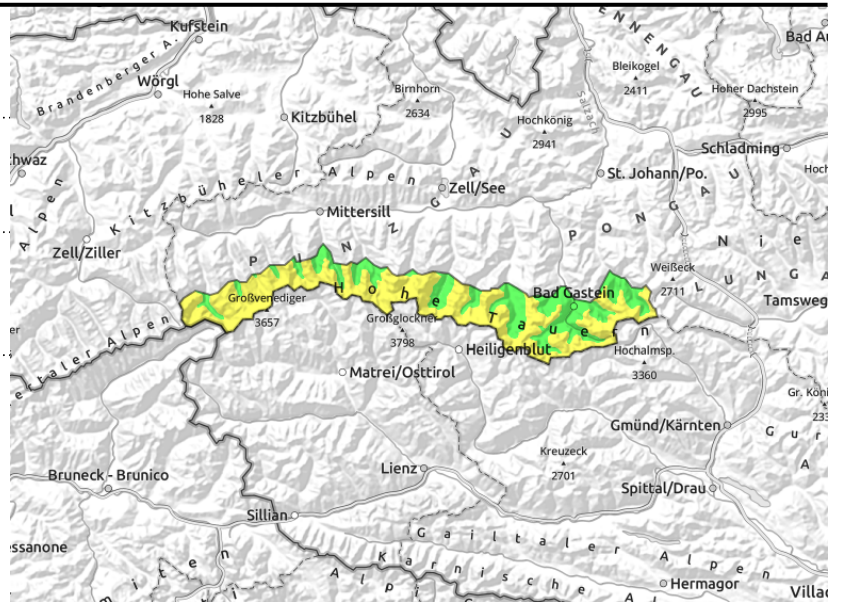
Glocknergruppe Alpenhauptkamm, Goldberggruppe Alpenhauptkamm, Großvenedigergruppe Alpenhauptkamm



ridgeline snowdrifts



slight daytime cycle



Superficial avalanches in extremely steep terrain, some snowdrifts

Avalanche danger above 2500 m is MODERATE, below that altitude danger is LOW.

Due to solar radiation, loose-snow and slab avalanches (small-to-medium) can trigger in extremely steep terrain. Snowdrifts occur mostly near ridges, mostly shallow, sometimes triggerable on N/E facing slopes.

Persistent weak layer above 2400 m on shady slopes in particular, around the layer of Sahara dust. This weak layer is currently not triggerable or only by large additional loading (and cannot fracture deeper down).

Isolated glide-snow avalanches are possible.

Snowpack structure

The snowpack has a melt-freeze crust in early morning which later softens. On north-facing slopes and in high alpine regions there is still loose snow. In the afternoon, the intensifying southerly winds can blow away the freshly generated snowdrifts.

Weather

On Thursday morning following a night of clear skies, sunny and good visibility. As of midday, convective cloud build-up, irritating E/S winds will arise. At 2000 m: 0 to 3 degrees; at 3000 m: -4 degrees.

Skies on Thursday night will be partially overcast.

On Friday, lots of cloud, the high peaks shrouded in fog, some rain/snow showers are possible. At 2000 m: 1-4 degrees; at 3000 m: -3 degrees. In the afternoon, some irritating SE wind.

Outlook

On Friday and over the weekend, lots of clouds and rain showers will dominate from the start (wet-snow problem).

Translated by Jeffrey McCabe, www.creativtrans.com

Avalanche problems



Danger ratings



Expositions

