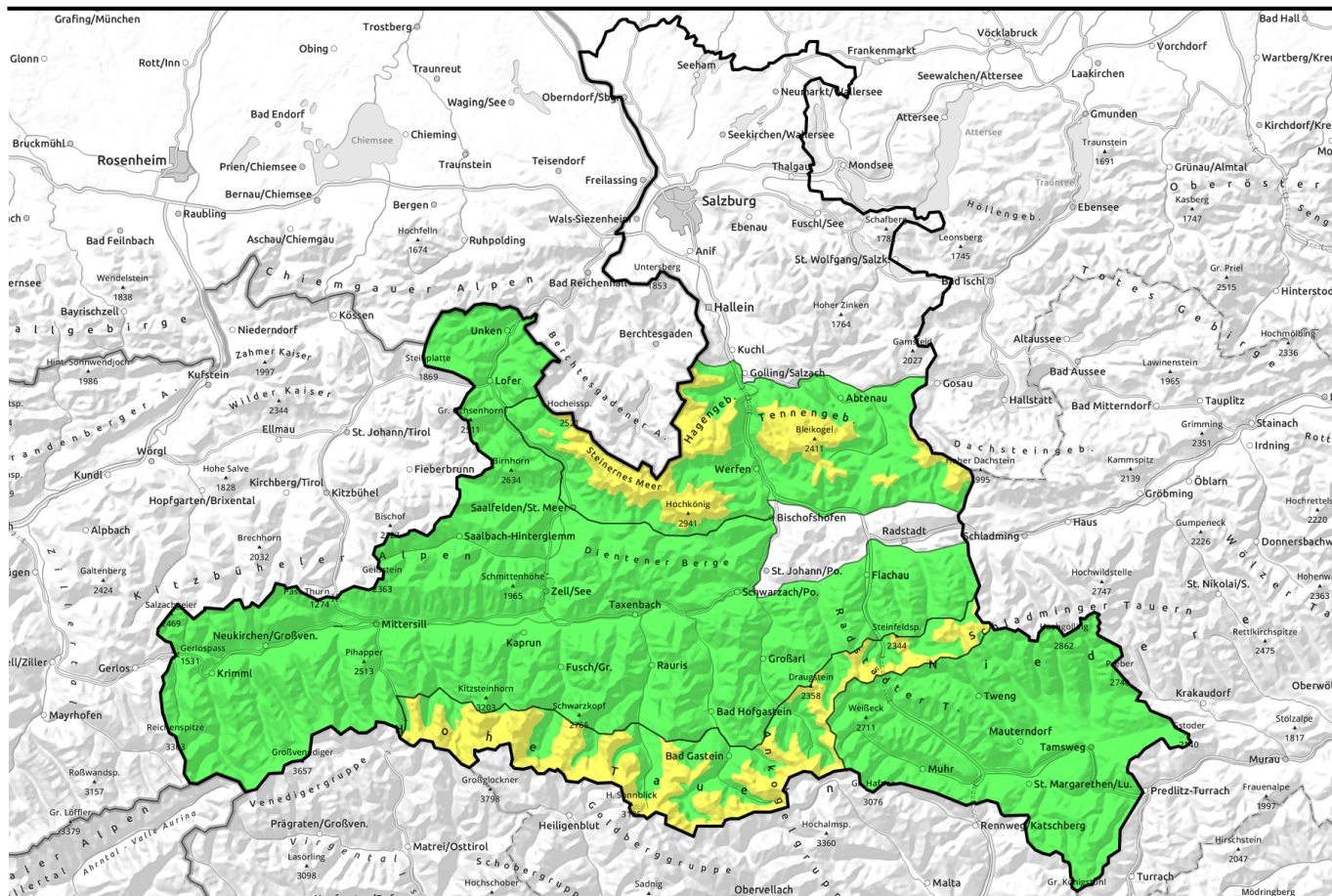


20.04.2022



Above 2200m MODERATE avalanche danger. Loose-snow avalanches, some drifts, persistent weak layer



Chiemgauer Alpen, Heutal, Reiteralpe, Kitzbüheler Alpen, Glemmtal, Oberpinzgauer Grasberge, Dientner Grasberge, Nockberge, Goldberggruppe Nord, Loferer und Leoganger Steinberge, Glocknergruppe Nord, Großvenedigergruppe Nord, Niedere Tauern Süd, Großvenedigergruppe Alpenhauptkamm, Ankogelgruppe, Muhr, Niedere Tauern Nord

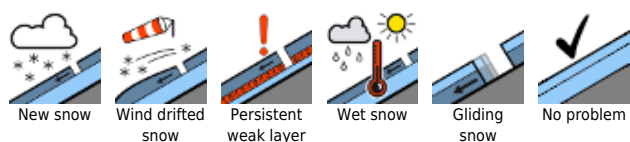


2200 m

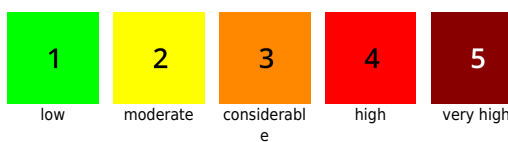
Glocknergruppe Alpenhauptkamm, Goldberggruppe Alpenhauptkamm, Niedere Tauern Alpenhauptkamm, Tennengebirge, Gosaukamm, Steinernes Meer, Hochkönig, Hagengebirge, Göllstock



Avalanche problems



Danger ratings

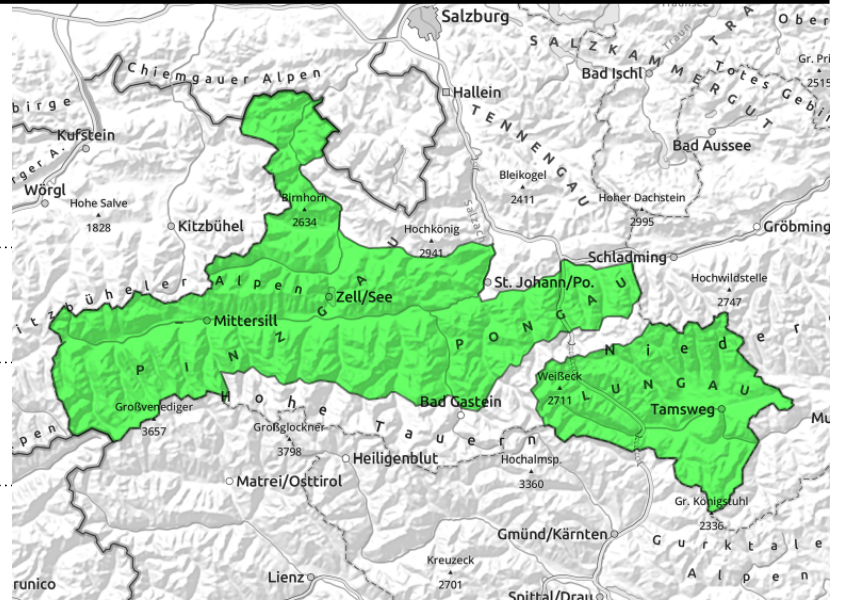


Expositions



20.04.2022

Chiemgauer Alpen, Heutal, Reiteralpe, Kitzbüheler Alpen, Glemmtal, Oberpinzgauer Grasberge, Dientner Grasberge, Nockberge, Goldberggruppe Nord, Loferer und Leoganger Steinberge, Glocknergruppe Nord, Großvenedigergruppe Nord, Niedere Tauern Süd, Großvenedigergruppe Alpenhauptkamm, Ankogelgruppe, Muhr, Niedere Tauern Nord



solar radiation and daytime warming



ridgeline snowdrift patches, thin, small, heightened risk of falls

Superficial moist loose-snow avalanches in extremely steep terrain

LOW avalanche danger all day long

Main danger: superficial loose-snow avalanches (mostly small) on extremely steep slopes. But the risk of being swept along and falling outweighs that of being buried in snow. At high altitudes, there are small snowdrift patches near ridges.

Isolated glide-snow avalanches are possible.

Snowpack structure

The snowpack has a firm melt-freeze crust, often smooth and hard, and some fresh snow or graupel deposited atop it. The old snowpack is generally compact, in isolated cases with a brownish layer of Sahara dust at high and high alpine altitudes which constitutes a weak layer, but currently not triggerable.

Weather

On Wednesday morning, morning disturbance from fog and clouds. In the afternoon, very good visibility. At 2000 m: temperatures rising from -4 to +1 degree. Little wind.

On Wednesday, following a night of clear skies, there will be sunshine. In the afternoon, convective cloud build-up is expected, the higher peaks could be shrouded in fog. Temperatures at 2000 m will rise from 0 to 3 degrees. Winds will remain light.

Outlook

Keep alert to the daytime cycle.

Avalanche problems



New snow



Wind drifted snow



Persistent weak layer



Wet snow



Gliding snow



No problem

Danger ratings



1

low



2

moderate



3

considerable



4

high



5

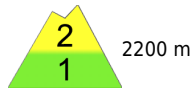
very high



Expositions





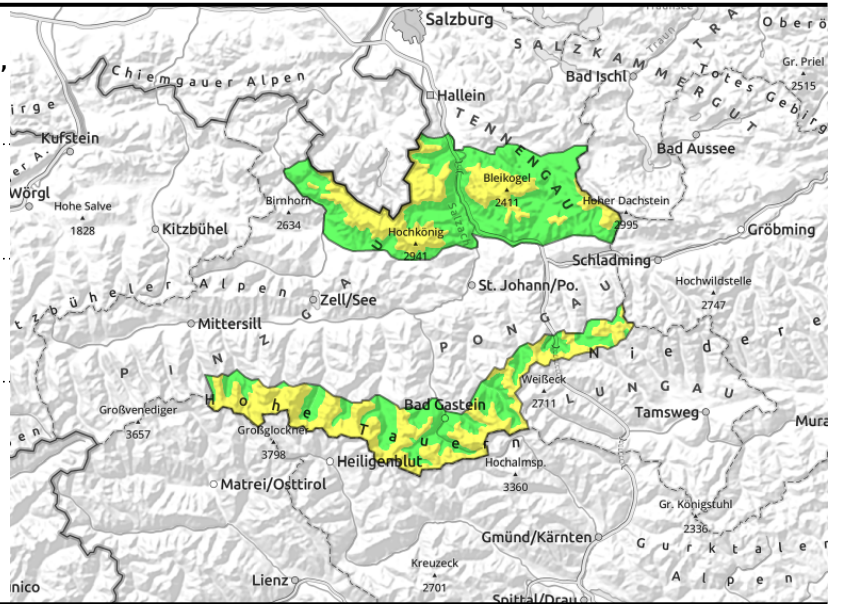
20.04.2022

Glocknergruppe Alpenhauptkamm, Goldberggruppe Alpenhauptkamm, Niedere Tauern Alpenhauptkamm, Tennengebirge, Gosaukamm, Steinernes Meer, Hochkönig, Hagengebirge, Göllstock



  **ridgeline drifts, small, mostly shallow**

  **solar radiation, daytime warming**



Superficial avalanches on extremely steep slopes

Avalanche danger above 2200m is MODERATE, below that altitude danger is LOW.

Due to solar radiation and daytime warming, loose-snow and slab avalanches (small-to-medium) can trigger in extremely steep terrain. Snowdrifts are evident near ridgelines, mostly shallow, not easily triggered.

A persistent weak layer exists above 2400 m on shady slopes in particular around the melt-freeze crust browned by Sahara dust. This weak layer is currently not triggerable, it will become riskier only when temperatures rise significantly.

Isolated glide-snow avalanches are possible.

Snowpack structure

The snowpack has a firm melt-freeze crust, is often smooth and hard, with some fresh snow (up to 15 cm) or graupel atop it.

Weather

On Wednesday morning, morning disturbance from fog and clouds. In the afternoon, very good visibility. At 2000 m: temperatures rising from -4 to +1 degree. Little wind.

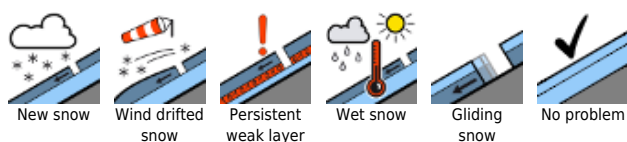
On Wednesday, following a night of clear skies, there will be sunshine. In the afternoon, convective cloud build-up is expected, the higher peaks could be shrouded in fog. Temperatures at 2000 m will rise from 0 to 3 degrees. Winds will remain light.

Outlook

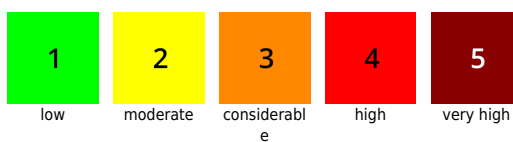
Keep alert to the daytime cycle.

Translated by Jeffrey McCabe, www.creativtrans.com

Avalanche problems



Danger ratings



Expositions

