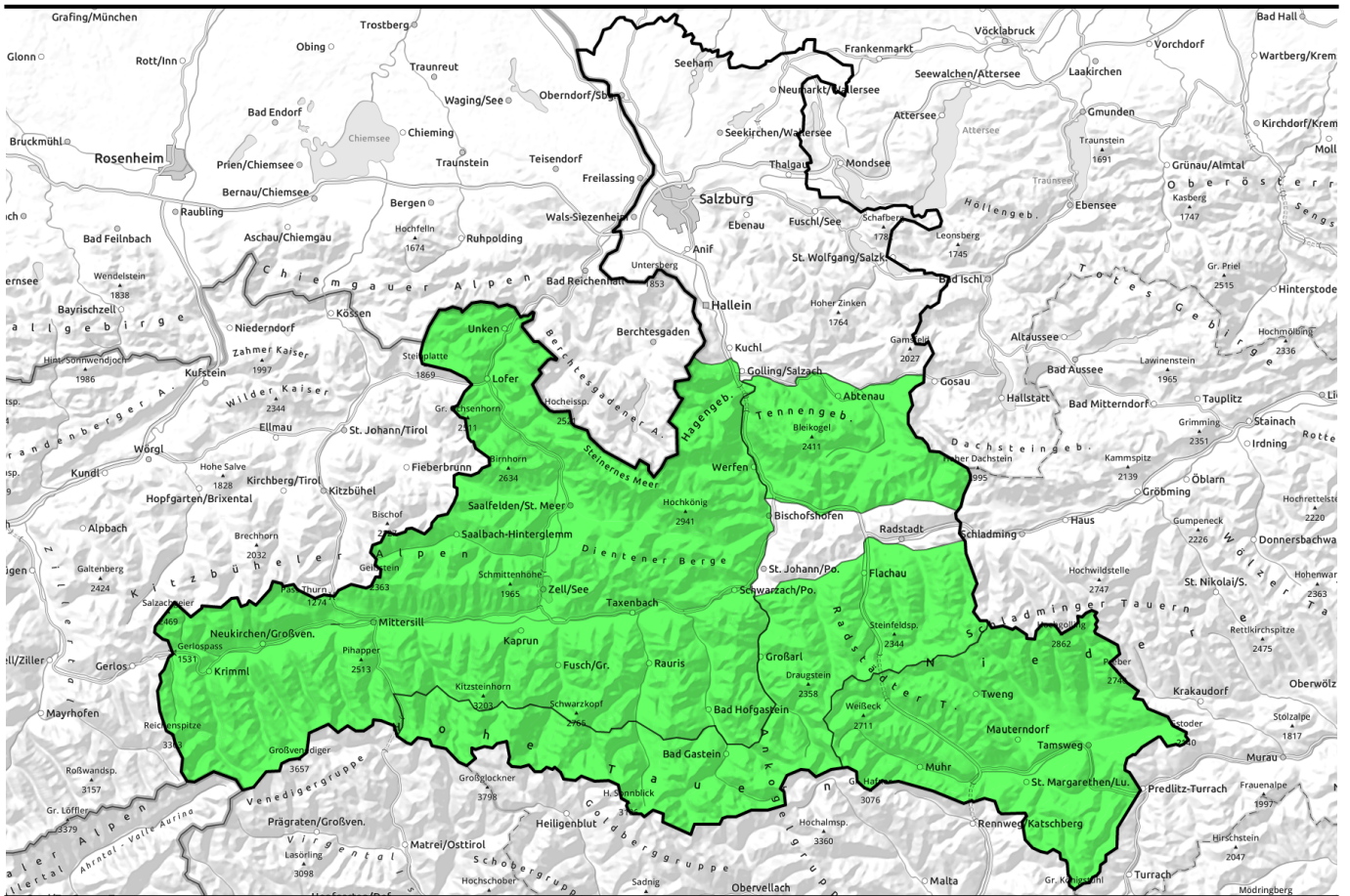


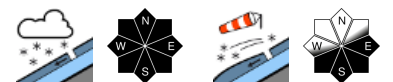
19.04.2022, morning



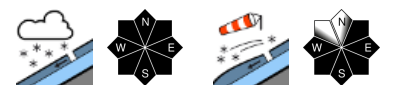
Fresh Easter snowfall from the north. In afternoon, increase to MODERATE in places.



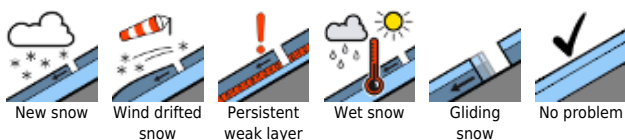
Chiemgauer Alpen, Heutal, Reiteralpe, Kitzbüheler Alpen, Glemmtal, Oberpinzgauer Grasberge, Dientner Grasberge, Nockberge, Goldberggruppe Nord, Loferer und Leoganger Steinberge, Glocknergruppe Nord, Großvenedigergruppe Nord, Niedere Tauern Süd, Steinernes Meer, Hochkönig, Hagengebirge, Göllstock, Großvenedigergruppe Alpenhauptkamm, Ankogelgruppe, Muhr



Glocknergruppe Alpenhauptkamm, Goldberggruppe Alpenhauptkamm, Niedere Tauern Alpenhauptkamm, Tennengebirge, Gosaukamm, Niedere Tauern Nord



Avalanche problems



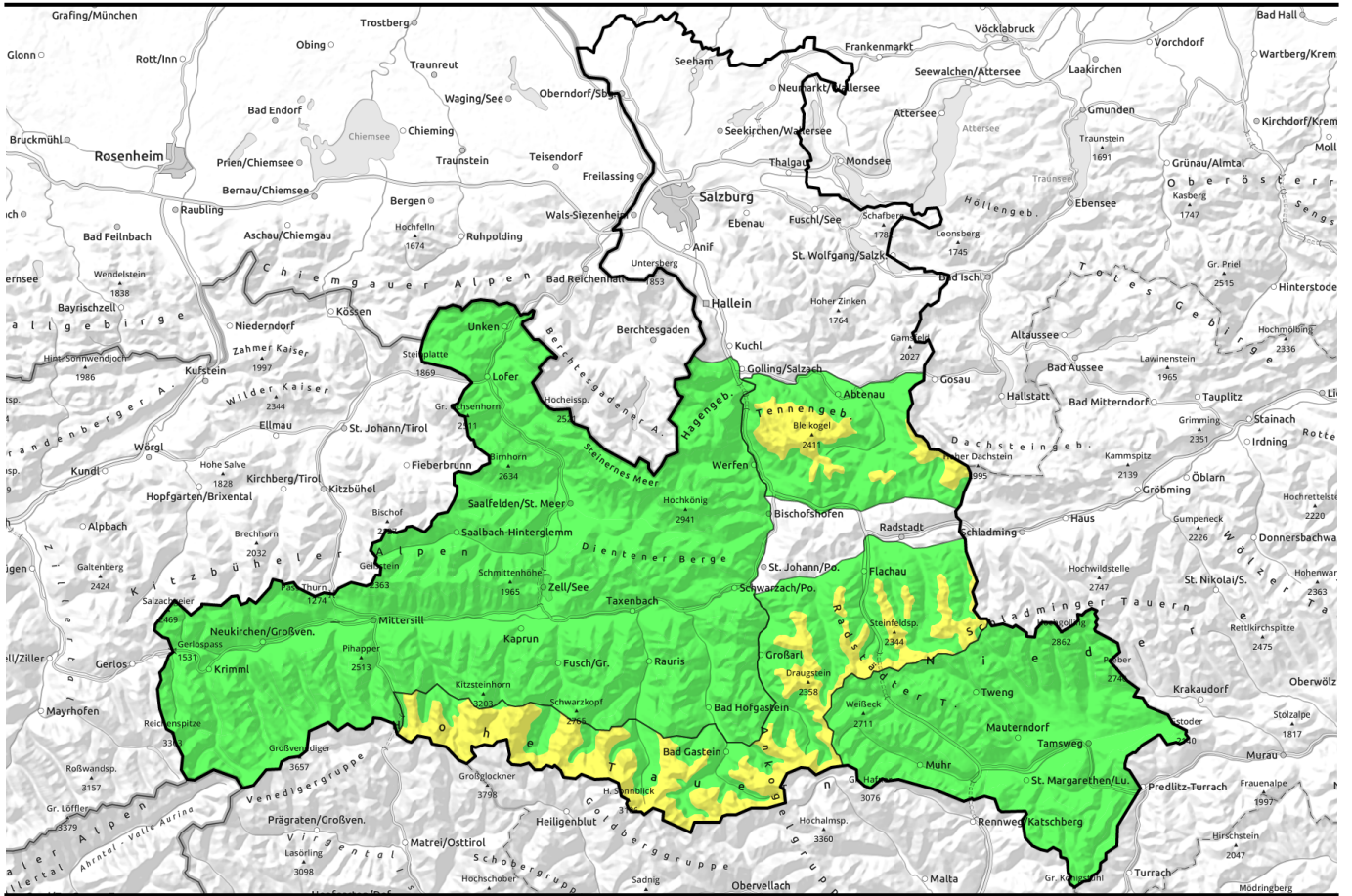
Danger ratings



Expositions



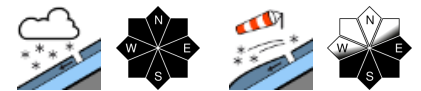
19.04.2022, afternoon



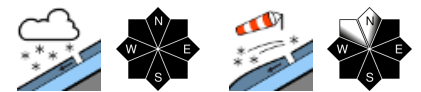
Neuschnee von Osten und Norden her - teilweise am Nachmittag auf MÄßIGE Gefahr ansteigend



Chiemgauer Alpen, Heutal, Reiteralpe, Kitzbüheler Alpen, Glemmtal, Oberpinzgauer Grasberge, Dientner Grasberge, Nockberge, Goldberggruppe Nord, Loferer und Leoganger Steinberge, Glocknergruppe Nord, Großvenedigergruppe Nord, Niedere Tauern Süd, Steinernes Meer, Hochkönig, Hagengebirge, Göllstock, Großvenedigergruppe Alpenhauptkamm, Ankogelgruppe, Muhr

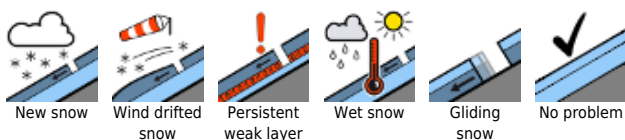


Glocknergruppe Alpenhauptkamm, Goldberggruppe Alpenhauptkamm, Niedere Tauern Alpenhauptkamm, Tennengebirge, Gosaukamm, Niedere Tauern Nord



2000 m

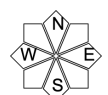
Avalanche problems



Danger ratings

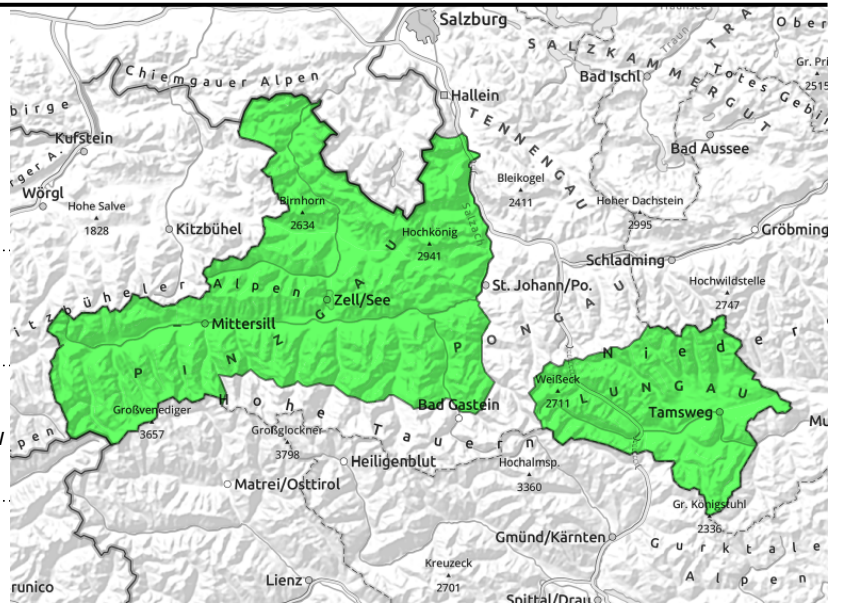


Expositions



19.04.2022

Chiemgauer Alpen, Heutal, Reiteralpe, Kitzbüheler Alpen, Glemmtal, Oberpinzgauer Grasberge, Dientner Grasberge, Nockberge, Goldberggruppe Nord, Loferer und Leoganger Steinberge, Glocknergruppe Nord, Großvenedigergruppe Nord, Niedere Tauern Süd, Steinernes Meer, Hochkönig, Hagengebirge, Göllstock, Großvenedigergruppe Alpenhauptkamm, Ankogelgruppe, Muhr



loose-snow slides in very steep terrain, small, 10cm fresh snow in afternoon



ridgeline snowdrift patches, thin, small, heightened risk of falls

Some fresh snow in afternoon, avalanche danger remains low

Avalanche danger is LOW all day long.

The melt-freeze crust is compact in all aspects, The fresh snow in afternoon (5-15 cm) can trigger loose-snow slides in steep terrain due to diffuse radiation.

Risk of falls outweighs avalanche dangers.

Snowpack structure

The snowpack has a firm melt-freeze crust, often smooth and hard. On shady slopes and in high alpine regions there is a dry, thin layer of snow atop of it from last Friday which is riddled with graupel.

On Tuesday, another 10-15 cm of fresh snow will be deposited atop that.

Weather

On **Tuesday**, heavy cloud and snowfall will hamper visibility. Snowfall begins during the daytime, heavier in afternoon. Fresh snow: almost nothing in morning, about 10 cm in afternoon to evening. Brisk NW winds. At 2000 m: -4 degrees; at 3000 m: -8 degrees.

On **Wednesday**, heavy residual cloud initially, but dry. Increasing sunshine during the daytime, quite sunny in afternoon. At 2000 m: between -3 and +2 degrees; at 3000 m: -7 degrees.

Outlook

Numerous small loose-snow/wet-snow slides and small avalanches on steep slopes due to sunshine and warmth on Wednesday. Otherwise favourable conditions.

Avalanche problems



New snow



Wind drifted snow



Persistent weak layer



Wet snow



Gliding snow



No problem

Danger ratings



1

low



2

moderate



3

considerable



4

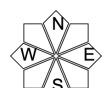
high



5

very high

Expositions



19.04.2022, morning

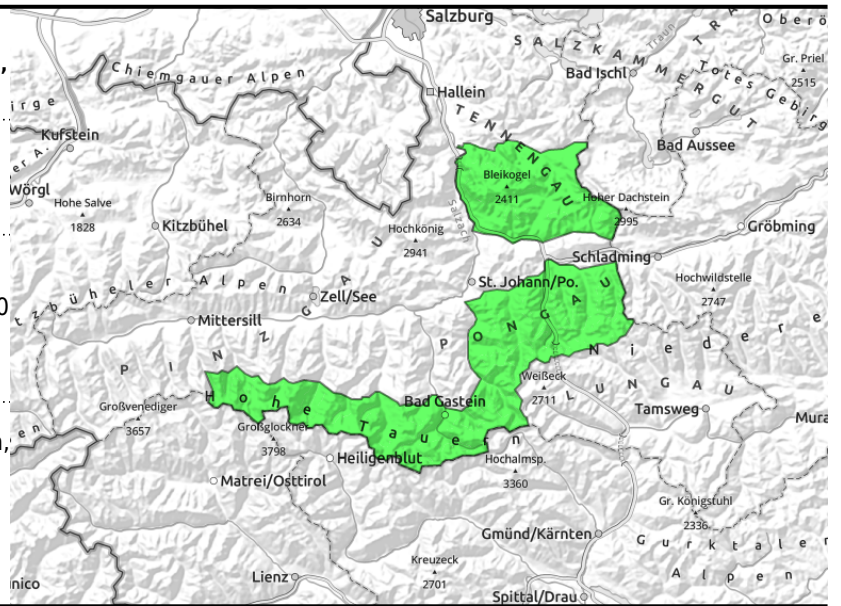
Glocknergruppe Alpenhauptkamm, Goldberggruppe Alpenhauptkamm, Niedere Tauern Alpenhauptkamm, Tennengebirge, Gosaukamm, Niedere Tauern Nord



loose-snow slides in very steep terrain, small-to-medium, 15-30 cm of fresh snow in afternoon/evening



ridgeline snowdrifts, small, thin, riskier in afternoon



Fresh-snow situation, avalanche danger increasing to moderate in afternoon

Avalanche danger is LOW in morning, despite launch of snowfall. In afternoon, it will rise to MODERATE above 2000 m.

The increasing amount of fresh snow (very little in morning, 15-30 cm in afternoon) can lead to small-to-medium loose-snow avalanches in steep terrain in afternoon due to diffuse radiation.

In ridgeline terrain above 2000 m, snowdrift accumulations can be generated during the daytime which in high alpine regions can be easily triggered. Even naturally triggered avalanches can grow to medium size.

Snowpack structure

The snowpack has a firm melt-freeze crust, often smooth and hard. On shady slopes and in high alpine regions there is a dry, thin layer of snow atop of it from last Friday which is riddled with graupel.

On Tuesday, another 10-15 cm of fresh snow will be deposited atop that.

Weather

On **Tuesday**, heavy cloud and snowfall will hamper visibility. Snowfall begins during the daytime, heavier in afternoon. Fresh snow: almost nothing in morning, about 10 cm in afternoon to evening. Brisk NW winds. At 2000 m: -4 degrees; at 3000 m: -8 degrees.

On **Wednesday**, heavy residual cloud initially, but dry. Increasing sunshine during the daytime, quite sunny in afternoon. At 2000 m: between -3 and +2 degrees; at 3000 m: -7 degrees.

Outlook

Numerous small loose-snow/wet-snow slides and small avalanches on steep slopes due to sunshine and warmth on Wednesday. Otherwise favourable conditions.

Avalanche problems



New snow



Wind drifted snow



Persistent weak layer



Wet snow



Gliding snow



No problem

Danger ratings



1

low



2

moderate



3

considerable



4

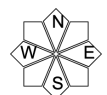
high



5

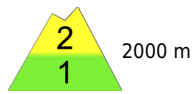
very high



Expositions





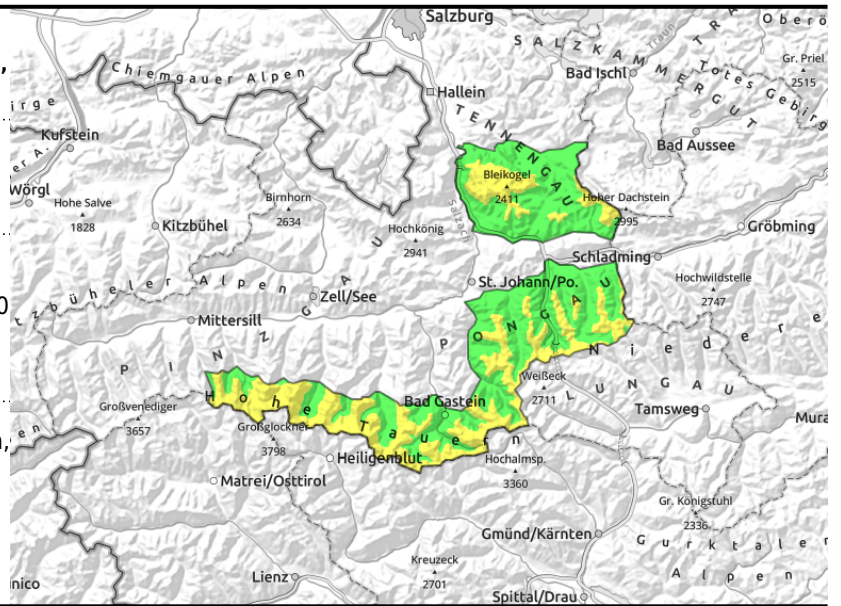
19.04.2022, afternoon

Glocknergruppe Alpenhauptkamm, Goldberggruppe Alpenhauptkamm, Niedere Tauern Alpenhauptkamm, Tennengebirge, Gosaukamm, Niedere Tauern Nord



  loose-snow slides in very steep terrain, small-to-medium, 15-30 cm of fresh snow in afternoon/evening

  ridgeline snowdrifts, small, thin, riskier in afternoon



Fresh-snow situation, avalanche danger increasing to moderate in afternoon

Avalanche danger is LOW in morning, despite launch of snowfall. In afternoon, it will rise to MODERATE above 2000 m.

The increasing amount of fresh snow (very little in morning, 15-30 cm in afternoon) can lead to small-to-medium loose-snow avalanches in steep terrain in afternoon due to diffuse radiation.

In ridgeline terrain above 2000 m, snowdrift accumulations can be generated during the daytime which in high alpine regions can be easily triggered. Even naturally triggered avalanches can grow to medium size.

Snowpack structure

The snowpack has a firm melt-freeze crust, often smooth and hard. On shady slopes and in high alpine regions there is a dry, thin layer of snow atop of it from last Friday which is riddled with graupel.

On Tuesday, another 10-15 cm of fresh snow will be deposited atop that.

Weather

On **Tuesday**, heavy cloud and snowfall will hamper visibility. Snowfall begins during the daytime, heavier in afternoon. Fresh snow: almost nothing in morning, about 10 cm in afternoon to evening. Brisk NW winds. At 2000 m: -4 degrees; at 3000 m: -8 degrees.

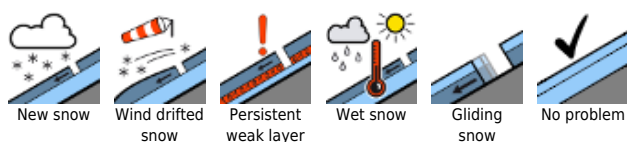
On **Wednesday**, heavy residual cloud initially, but dry. Increasing sunshine during the daytime, quite sunny in afternoon. At 2000 m: between -3 and +2 degrees; at 3000 m: -7 degrees.

Outlook

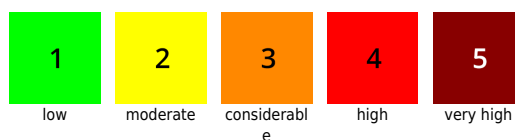
Numerous small loose-snow/wet-snow slides and small avalanches on steep slopes due to sunshine and warmth on Wednesday. Otherwise favourable conditions.

Translated by Jeffrey McCabe, www.creativtrans.com

Avalanche problems



Danger ratings



Expositions

