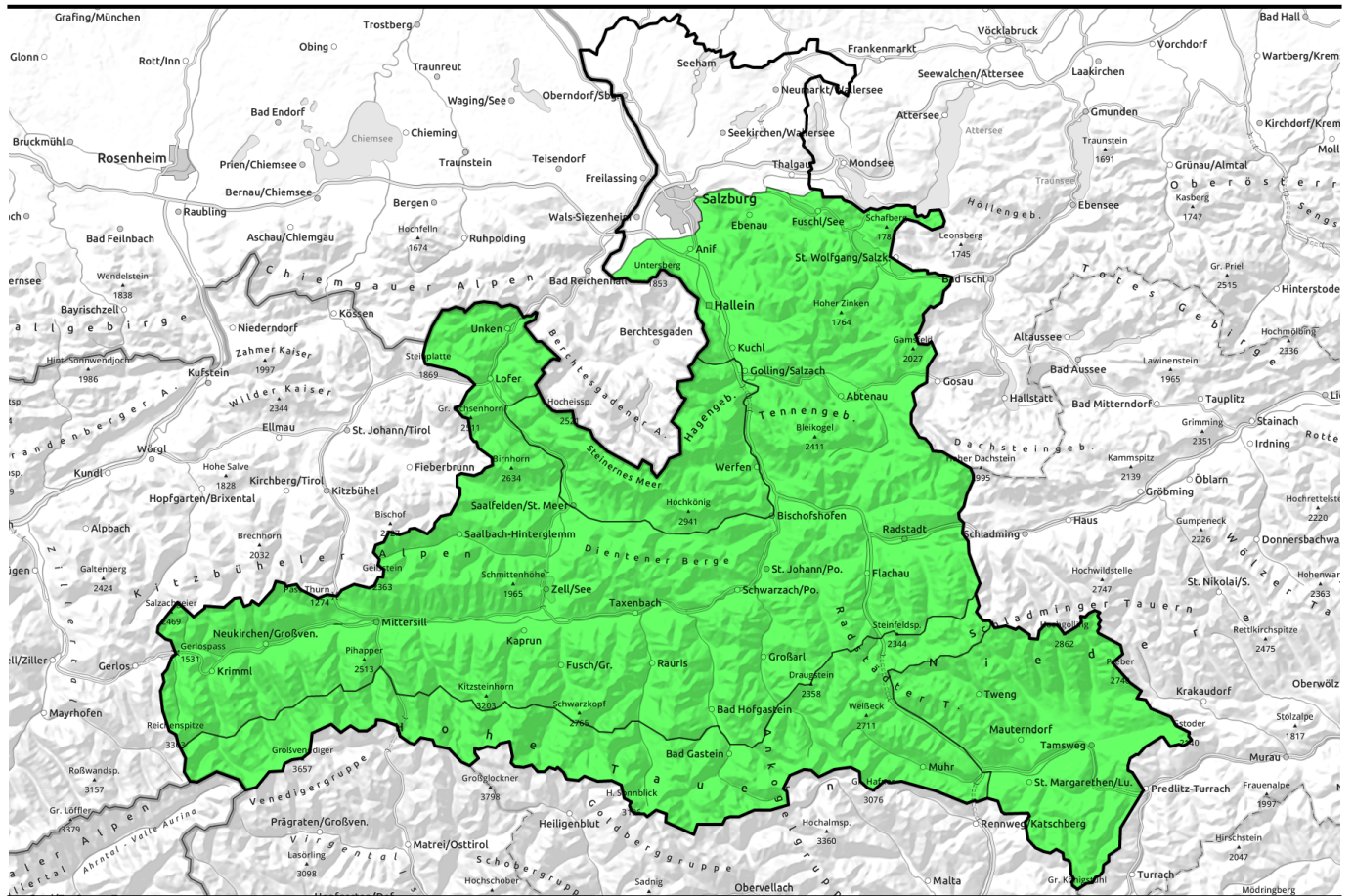


17.04.2022 through 19.04.2022



Stable melt-freeze crust, low avalanche danger



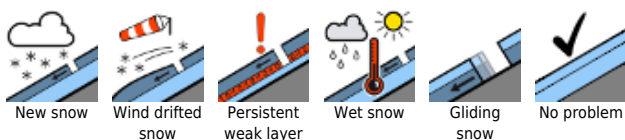
Chiemgauer Alpen, Heutal, Reiteralpe, Osterhorngruppe, Gamsfeldgruppe, Pongauer Grasberge, Kitzbüheler Alpen, Glemmtal, Oberpinzgauer Grasberge, Dientner Grasberge, Nockberge, Niedere Tauern Nord, Goldberggruppe Nord, Tennengebirge, Gosaukamm, Loferer und Leoganger Steinberge, Glocknergruppe Nord, Großvenedigergruppe Nord, Niedere Tauern Süd, Untersbergstock



Steinernes Meer, Hochkönig, Hagengebirge, Göllstock, Großvenedigergruppe Alpenhauptkamm, Glocknergruppe Alpenhauptkamm, Ankogelgruppe, Muhr, Goldberggruppe Alpenhauptkamm, Niedere Tauern Alpenhauptkamm



Avalanche problems



Danger ratings

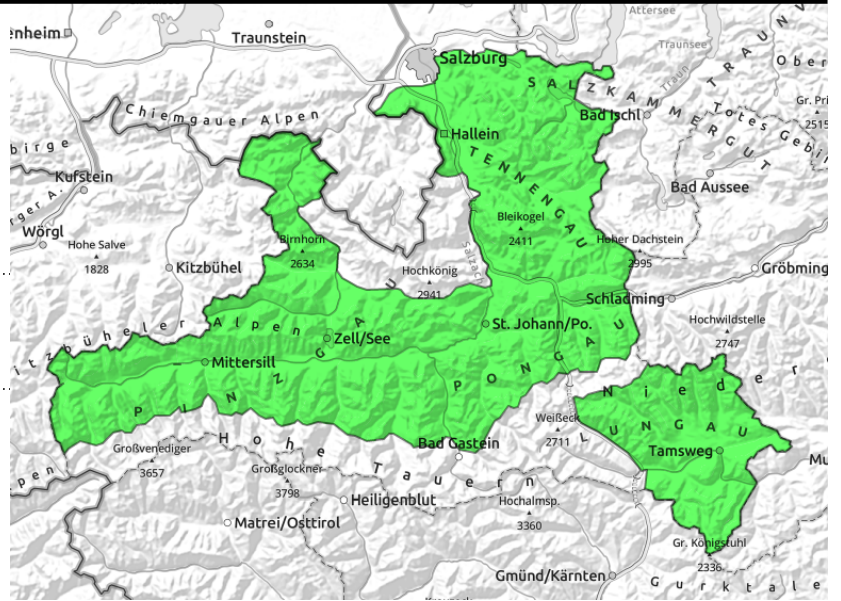


Expositions



17.04.2022 through 19.04.2022

Chiemgauer Alpen, Heutal, Reiteralpe, Osterhorngruppe, Gamsfeldgruppe, Pongauer Grasberge, Kitzbüheler Alpen, Glemmtal, Oberpinzgauer Grasberge, Dientner Grasberge, Nockberge, Niedere Tauern Nord, Goldberggruppe Nord, Tennengebirge, Gosaukamm, Loferer und Leoganger Steinberge, Glocknergruppe Nord, Großvenedigergruppe Nord, Niedere Tauern Süd, Untersbergstock



isolated glide-snow avalanches possible despite superficial cooling, mostly small, seldom medium-sized, northern aspects, little snow in southern aspects

Favorable springtime situation, slight daytime danger cycle, shady slopes are hard as steel

Hardly any danger zones. Favorable springtime situation with slight daytime danger cycle within the Danger Level LOW.

The melt-freeze crust is compact in all aspects, softens superficially in the sun, not deeply. Small dangers lie in superficial moist snow slides (small) triggered by skiers and rare naturally triggered glide-snow avalanches (in extended northern aspects, small-to-medium).

Danger of falling outweighs that of avalanches. Caution: on shady slopes the surface is hard!

Snowpack structure

The snowpack is 0-degrees isotherm, moist at the interior, wet on south-facing slopes. Due to relatively low temperatures and clear nights, firm melt-freeze crusts dominate, sometimes with a layer of graupel on top. During the daytime the snow rapidly turns to firm on sunny slopes, mostly only superficially. On shady slopes the surface remains hard as steel.

The fresh snow from Tuesday is minor, not avalanche relevant.

Most potential avalanches have already released. Relevant snow reserves are small, found in N/E aspects. Small risk of glide-snow releases on grassy slopes.

Weather

Saturday night skies will be star-studded and relatively cold.

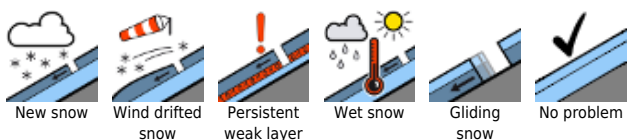
Easter Sunday will be sunny, often cloudless skies, colder than recently. At 2000 m: -7 to -4 degrees; at 3000m: -10 degrees. Often strong northerly winds.

Sunday night skies will be star-studded with powerful outgoing radiation.

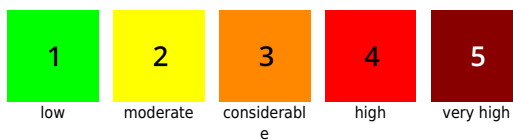
On Monday, sunshine in the morning. Later on, clouds will move in. Towards evening, light snowfall is possible. Persistent brisk northerly winds. At 2000 m: -6 to -2 degrees; at 3000 m: -10 degrees.

On Tuesday, continuingly cool, light snowfall above 1400 m. Fresh snow not avalanche relevant in high alpine regions.

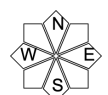
Avalanche problems



Danger ratings



Expositions

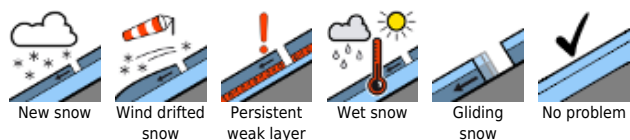


17.04.2022 through 19.04.2022

Outlook

On Monday and Tuesday, no change. Stable melt-freeze crusts dominate, some transformation to firm snow, and a few cm of fresh snow on Tuesday. At mid-week, temperatures will rise slightly: minor wet-snow problem, subject to daytime cycle.

Avalanche problems



Danger ratings

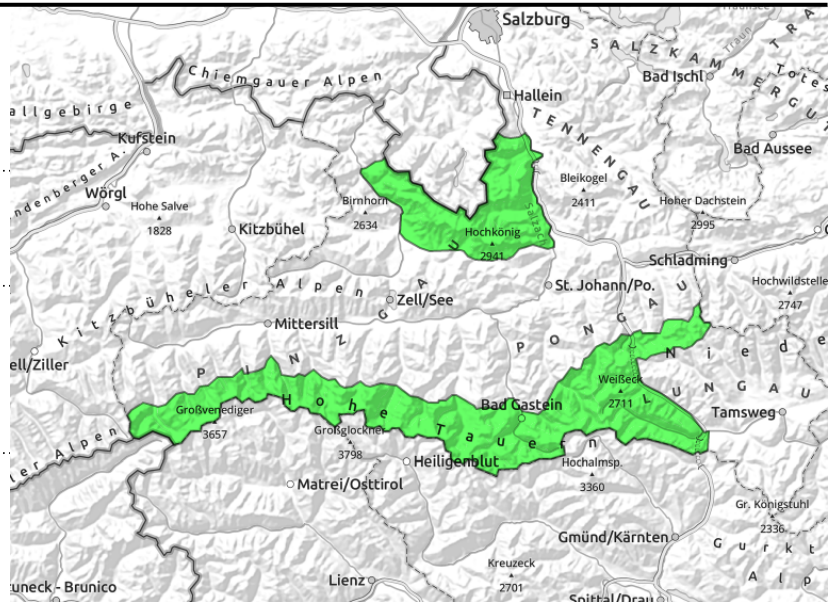


Expositions



17.04.2022 through 19.04.2022

Steinernes Meer, Hochkönig, Hagengebirge, Göllstock, Großvenedigergruppe Alpenhauptkamm, Glocknergruppe Alpenhauptkamm, Ankogelgruppe, Muhr, Goldberggruppe Alpenhauptkamm, Niedere Tauern Alpenhauptkamm



isolated glide-snow avalanches below 2400m possible, despite superficial cooling, small-to-medium, in N/E aspects



above 2600 m, very few spots where old snow can trigger, near ridges, transitions from little to much snow, at the Sahara layer

Favorable springtime situation, slight daytime cycle, shady slopes are hard

Hardly any danger zones. Favorable springtime situation with slight daytime danger cycle within the Danger Level LOW.

The melt-freeze crust is compact in all aspects, softens superficially in the sun, not deeply. Small dangers lie in superficial moist snow slides (small) triggered by skiers and rare naturally triggered glide-snow avalanches (in extended northern aspects, small-to-medium).

Very few avalanche prone locations for slabs in high alpine terrain (above 2600m). Caution needed in N/E aspects in extremely steep ridgeline terrain (by large additional loading).

Danger of falling outweighs that of avalanches. Caution: on shady slopes the surface is hard!

Snowpack structure

The snowpack is 0-degrees isotherm, moist at the interior, wet on south-facing slopes. Due to relatively low temperatures and clear nights, firm melt-freeze crusts dominate, sometimes with a layer of graupel on top. During the daytime the snow rapidly turns to firm on sunny slopes, mostly only superficially. On shady slopes the surface remains hard as steel.

The fresh snow from Tuesday is minor, not avalanche relevant.

Most potential avalanches have already released. Relevant snow reserves are small, found in N/E aspects. Small risk of glide-snow releases on grassy slopes.

Above 2600m there is a weak layer in the old snow near the surface (near the Sahara layer) where several slab avalanches triggered on Friday.

Weather

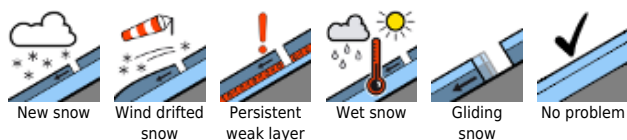
Saturday night skies will be star-studded and relatively cold.

Easter Sunday will be sunny, often cloudless skies, colder than recently. At 2000 m: -7 to -4 degrees; at 3000m: -10 degrees. Often strong northerly winds.

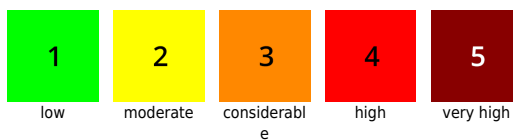
Sunday night skies will be star-studded with powerful outgoing radiation.

On Monday, sunshine in the morning. Later on, clouds will move in. Towards evening, light snowfall is

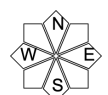
Avalanche problems



Danger ratings



Expositions



17.04.2022 through 19.04.2022

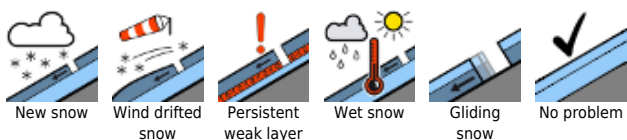
possible. Persistent brisk northerly winds. At 2000 m: -6 to -2 degrees; at 3000 m: -10 degrees. On Tuesday, continuingly cool, light snowfall above 1400 m. Fresh snow not avalanche relevant in high alpine regions.

Outlook

On Monday and Tuesday, no change. Stable melt-freeze crusts dominate, some transformation to firm snow, and a few cm of fresh snow on Tuesday. At mid-week, temperatures will rise slightly: minor wet-snow problem, subject to daytime cycle, probably only below 2300m.

Translated by Jeffrey McCabe, www.creativtrans.com

Avalanche problems



Danger ratings



Expositions

