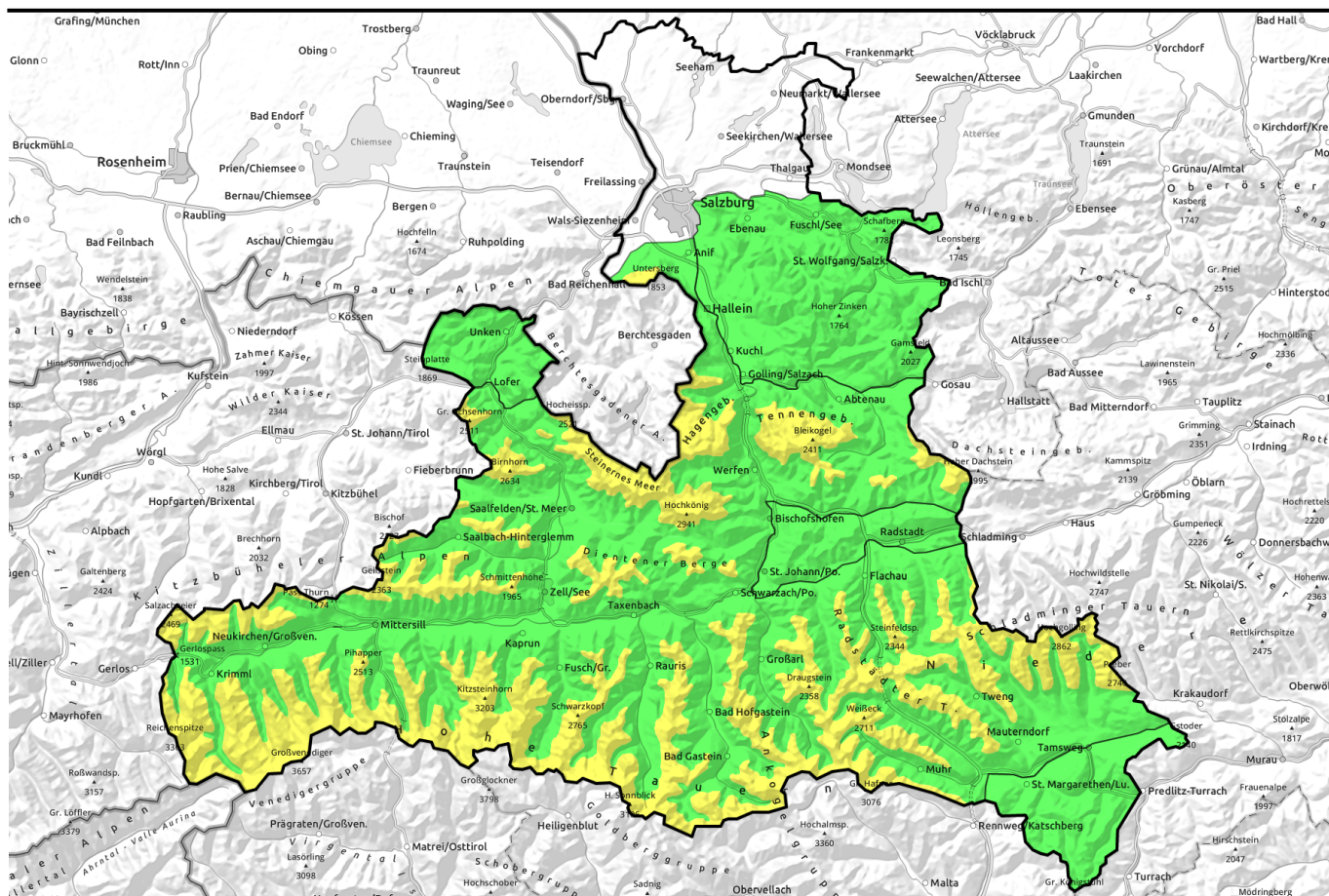


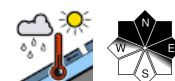
16.04.2022



Mild night with rainfall, Saturday moderate wet-snow problem from the start, lots of morning fog



Chiemgauer Alpen, Heutal, Reiteralpe, Osterhorngruppe, Gamsfeldgruppe, Pongauer Grasberge



1700 m

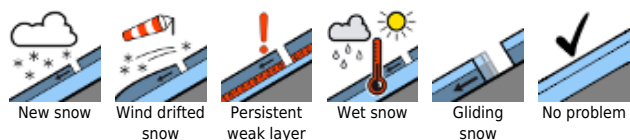
Untersbergstock, Steinernes Meer, Hochkönig, Hagengebirge, Göllstock, Loferer und Leoganger Steinberge, Oberpinzgauer Grasberge, Großvenedigergruppe Nord, Großvenedigergruppe Alpenhauptkamm, Kitzbüheler Alpen, Glemmtal, Glocknergruppe Nord, Glocknergruppe Alpenhauptkamm, Dientner Grasberge, Goldberggruppe Nord, Tennengebirge, Gosaukamm, Niedere Tauern Nord, Ankogelgruppe, Muhr, Niedere Tauern Süd, Goldberggruppe Alpenhauptkamm, Niedere Tauern Alpenhauptkamm



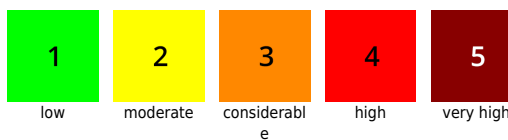
Nockberge



Avalanche problems



Danger ratings



Expositions

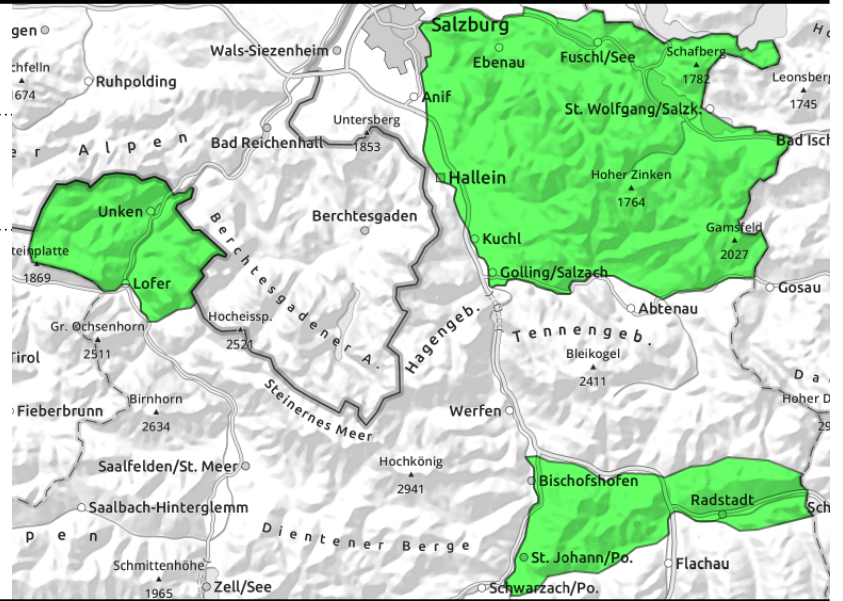


16.04.2022

Chiemgauer Alpen, Heutal, Reiteralpe, Osterhorngruppe, Gamsfeldgruppe, Pongauer Grasberge



isolated naturally triggered avalanches, most small, otherwise little snow



Minor wet-snow problem, particularly in extended northern aspects

Wet-snow problem: avalanche danger is LOW. Due to rain seepage into the snowpack and a lack of nocturnal outgoing longwave radiation, naturally triggered wet loose-snow avalanches and isolated glide-snow avalanches are possible, provide there is sufficient snow on the ground. The releases remain mostly small, but can potentially grow to medium size. Danger zones occur.

Snowpack structure

Not much snow on the ground, the slopes are becoming bare. What remains is 0-degree isotherm and wet. Most potential avalanches have already released. Relevant amounts remain in N/E aspects.

Weather

Nighttime skies will be overcast, not cold, some rain.

On Holy Saturday, clouds and fog will dominate at summit level. In the morning til noon, temperatures will drop to 7 degrees from the north, due to intensifying northerly winds, repeated bouts of rainfall, snowfall level will descend from 2200 m to 1400 m, no relevant amounts of fresh snow will fall. At 2000 m: dropping from +1 to 4 degrees during the course of the day.

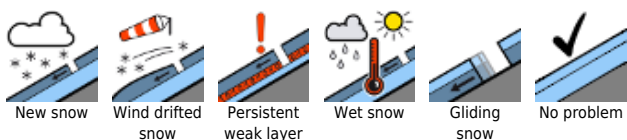
Saturday night, skies at least partly clear.

On Easter Sunday, sunny, often cloudless, but colder than recently. At 2000 m: -6 degrees.

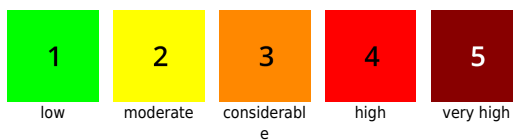
Outlook

On Sunday and Monday, following clear, cold nights the snowpack in the morning will be frozen and then turn to firn.

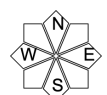
Avalanche problems



Danger ratings

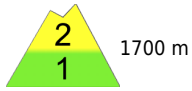
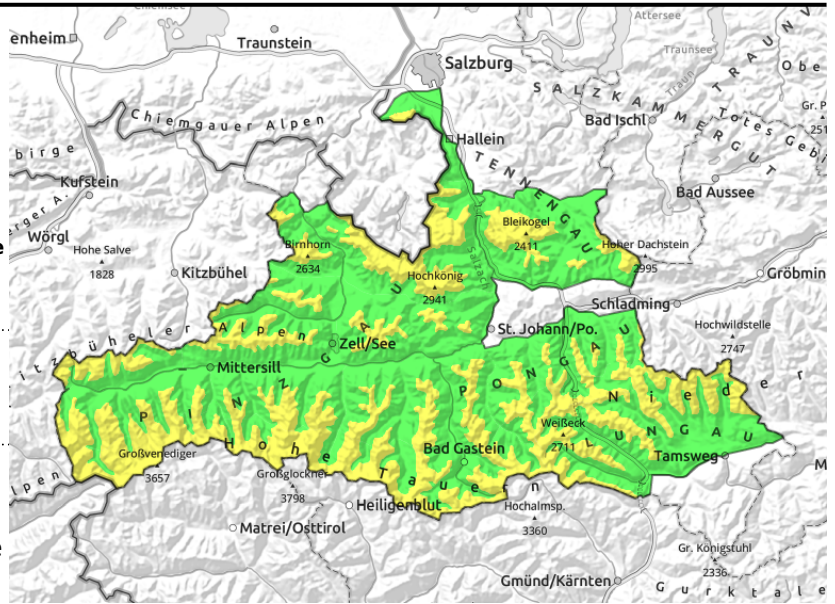


Expositions



16.04.2022

Untersbergstock, Steinernes Meer, Hochkönig, Hagengebirge, Göllstock, Loferer und Leoganger Steinberge, Oberpinzgauer Grasberge, Großvenedigergruppe Nord, Großvenedigergruppe Alpenhauptkamm, Kitzbüheler Alpen, Glemmtal, Glocknergruppe Nord, Glocknergruppe Alpenhauptkamm, Dientner Grasberge, Goldberggruppe Nord, Tennengebirge, Gosaukamm, Niedere Tauern Nord, Ankogelgruppe, Muhr, Niedere Tauern Süd, Goldberggruppe Alpenhauptkamm, Niedere Tauern Alpenhauptkamm



isolated naturally triggered avalanches, small-to-medium, loose-snow and glide-snow, the largest in N/E aspects



above 2600 m, near ridges, transitions from little to much snow, on the Sahara layer

Wet-snow problem right from the start, plus persistent weak layer in high alpine regions

Avalanche danger above 1700 m is MODERATE right from the start. Below that altitude there is little snow on the ground.

Naturally triggered wet loose-snow avalanches and isolated glide-snow avalanches are possible below 2400 m in extremely steep grassy terrain. These can grow to medium, even to large size in isolated cases. Very steep and not yet discharged starting zones in N/E aspects are the most problematic. Isolated danger zones for slab avalanches occur in high alpine regions (above 2600m) in NW/N/E aspects, also on south facing slopes further up. There, particularly by large additional loading, a dangerously large slab can be triggered particularly in steep ridgeline terrain.

Snowpack structure

The slopes are becoming bare by the day. What remains is 0-degree isotherm and wet over widespread areas. Most potential avalanches have already released. Relevant amounts remain in N/E aspects. Above 2600 m there are weak layers in the old snow (near the brown Sahara layer) at which several medium-sized and isolated large-sized slab avalanches have recently released.

Weather

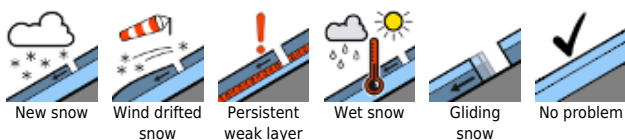
Nighttime skies will be overcast, not cold, some rain.

On Holy Saturday, clouds and fog will dominate at summit level. In the morning til noon, temperatures will drop to 7 degrees from the north, due to intensifying northerly winds, repeated bouts of rainfall, snowfall level will descend from 2200 m to 1400 m, no relevant amounts of fresh snow will fall. At 2000 m: dropping from +1 to 4 degrees during the course of the day.

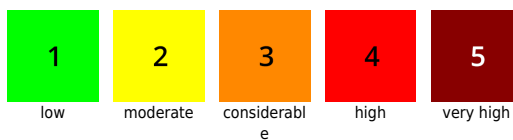
Saturday night, skies at least partly clear.

On Easter Sunday, sunny, often cloudless, but colder than recently. At 2000 m: -6 degrees.

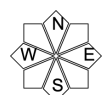
Avalanche problems



Danger ratings



Expositions

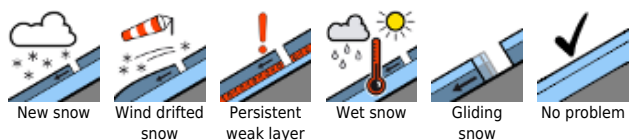


16.04.2022

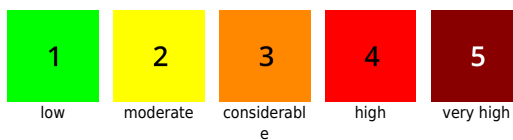
Outlook

On Sunday and Monday, following clear, cold nights the snowpack in the morning will be frozen and then turn to firn. Persistent weak layer problem will recede in high alpine regions.

Avalanche problems



Danger ratings



Expositions

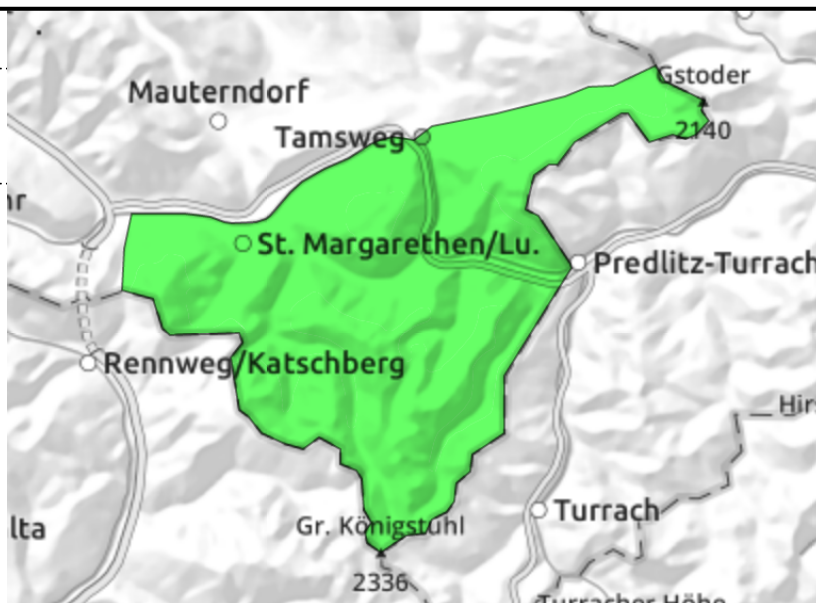


16.04.2022

Nockberge



isolated naturally triggered avalanches, mostly small, little snow



Wet-snow problem, small naturally triggered avalanches possible, generally little snow

Wet-snow problem: avalanche danger is LOW due to little snow on the ground. Due to rain and the lack of nocturnal outgoing longwave radiation, isolated naturally triggered wet loose-snow and a few glide-snow avalanches (especially in northern aspects) are possible, but most releases will be small.

Snowpack structure

The slopes are becoming bare by the day. What remains is 0-degree isotherm and wet over widespread areas. Most potential avalanches have already released. Relevant amounts remain in N/E aspects.

Weather

Nighttime skies will be overcast, not cold, some rain.

On Holy Saturday, clouds and fog will dominate at summit level. In the morning til noon, temperatures will drop to 7 degrees from the north, due to intensifying northerly winds, repeated bouts of rainfall, snowfall level will descend from 2200 m to 1400 m, no relevant amounts of fresh snow will fall. At 2000 m: dropping from +1 to 4 degrees during the course of the day.

Saturday night, skies at least partly clear.

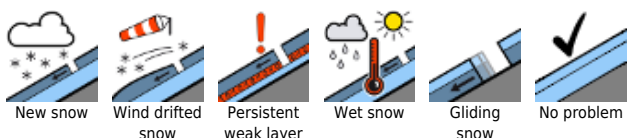
On Easter Sunday, sunny, often cloudless, but colder than recently. At 2000 m: -6 degrees. Often strong northerly wind.

Outlook

On Sunday and Monday, following clear, cold nights the snowpack in the morning will be frozen and then turn to firn.

Translated by Jeffrey McCabe, www.creativtrans.com

Avalanche problems



Danger ratings



Expositions

