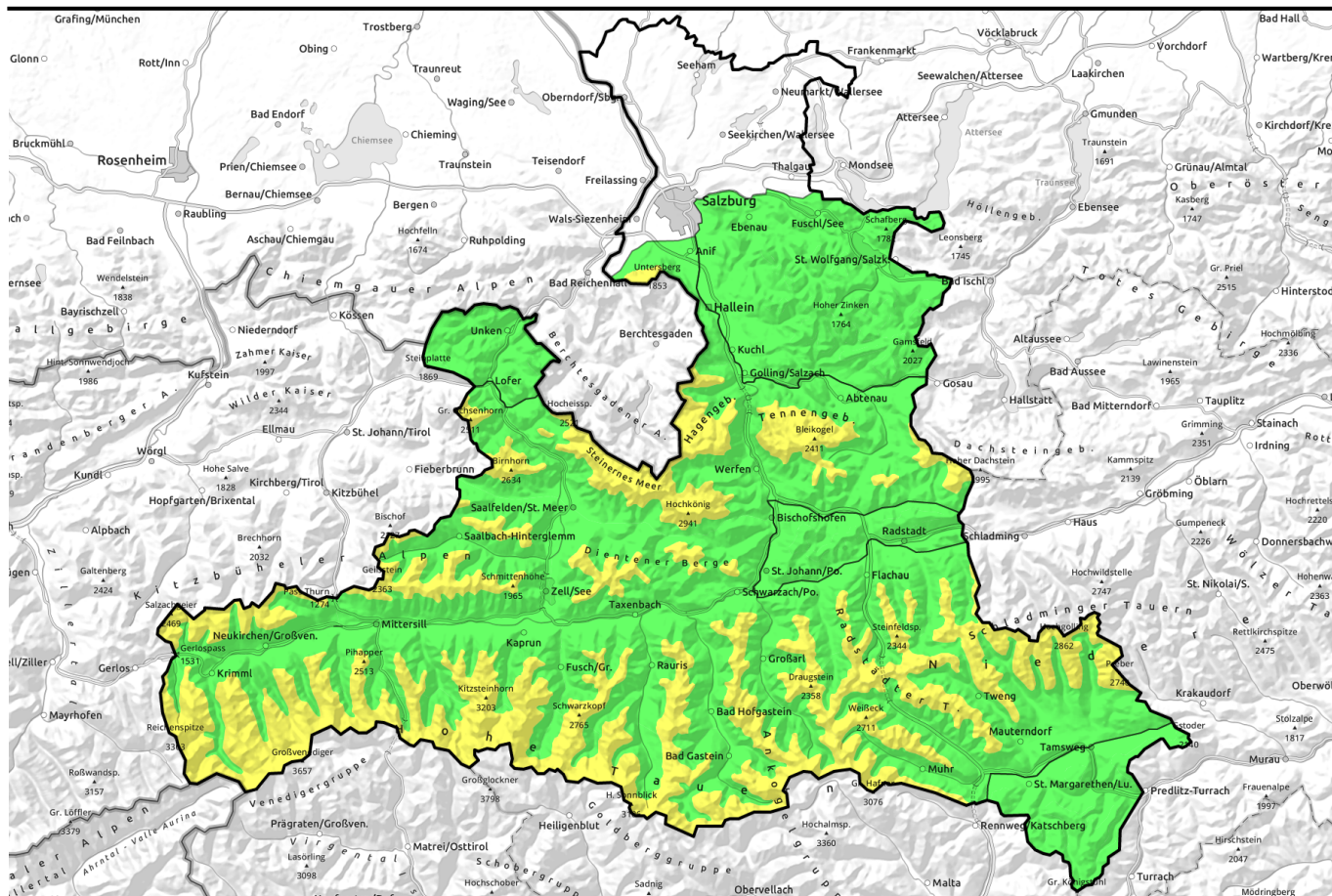


**15.04.2022**



## Rainfall up to high altitudes, naturally triggered avalanches and poor visibility

	Chiemgauer Alpen, Heutal, Reiteralpe, Osterhorngruppe, Gamsfeldgruppe, Pongauer Grasberge	
	1700 m Untersbergstock, Steinernes Meer, Hochkönig, Hagengebirge, Göllstock, Loferer und Leoganger Steinberge, Oberpinzgauer Grasberge, Großvenedigergruppe Nord, Großvenedigergruppe Alpenhauptkamm, Kitzbüheler Alpen, Glemmtal, Glocknergruppe Nord, Glocknergruppe Alpenhauptkamm, Dientner Grasberge, Goldberggruppe Nord, Tennengebirge, Gosaukamm, Niedere Tauern Nord, Ankogelgruppe, Muhr, Niedere Tauern Süd, Goldberggruppe Alpenhauptkamm, Niedere Tauern Alpenhauptkamm	
	Nockberge	

### Avalanche problems



### Danger ratings



### Expositions

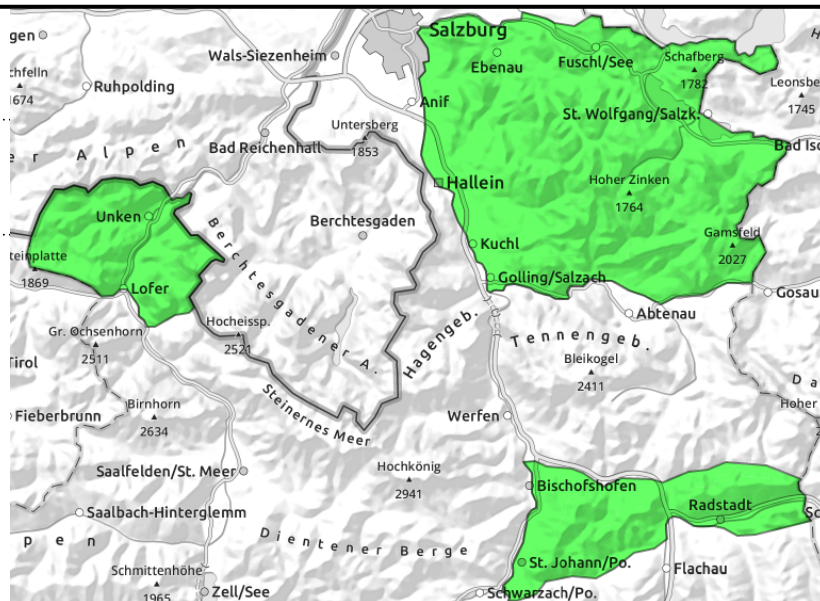


**15.04.2022**

**Chiemgauer Alpen, Heutal, Reiteralpe, Osterhorngruppe, Gamsfeldgruppe, Pongauer Grasberge**



at all altitudes as rain sets in, steep wooded areas



## Wet-snow problem up to summit levels

Wet-snow problem: avalanche danger is LOW. Due to rain seepage into the snowpack, naturally or artificially triggered wet loose-snow avalanches and isolated glide-snow avalanches are possible, provide there is sufficient snow on the ground. The releases remain mostly small, but can potentially grow to medium size. Danger zones occur especially in steep wooded areas.

### Snowpack structure

A string of spring days has hastened the snow's disappearance from the slopes. The snowpack is 0-degree isotherm and is being further burdened by rainfall.

### Weather

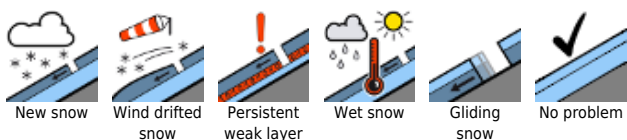
Thursday night skies will be heavily overcast, rainfall will spread starting in the early morning hours. On Friday, repeated bouts of rainfall, visibility often reduced, though short bright intervals are possible from place to place. Initially NW winds will be light, as of midday they will intensify. At 2000 m: +3 degrees.

On Saturday, initially heavy residual rain clouds with rain/snow showers (snowfall level 1200m). Temperatures will drop. At 2000m: -3 degrees.

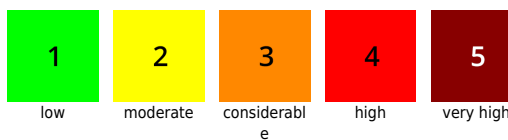
### Outlook

On Saturday at high altitudes, a bit of fresh snow which will bond well with the moist snowpack base. Despite lower temperatures the wet-snow problem will persist wherever there is sufficient snow on the ground.

#### Avalanche problems



#### Danger ratings

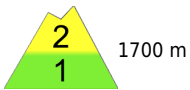
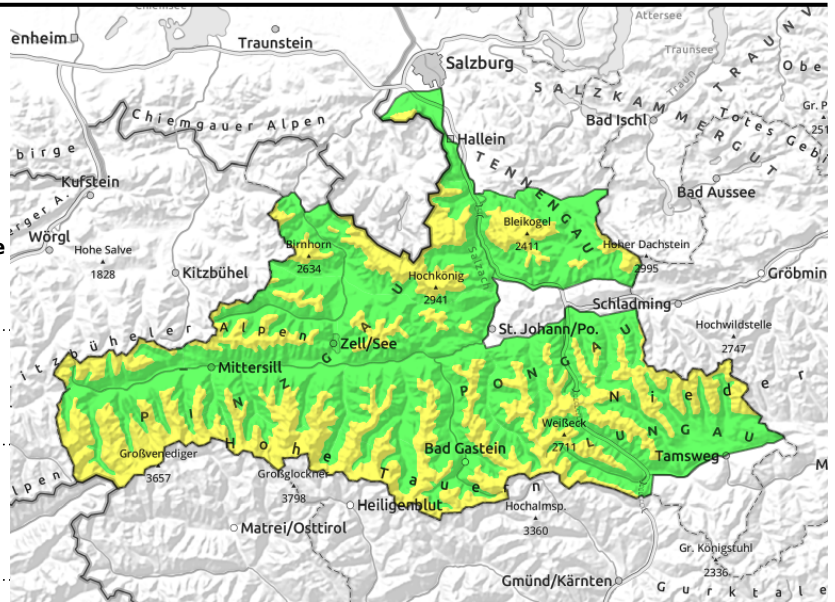


#### Expositions



**15.04.2022**

**Untersbergstock, Steinernes Meer, Hochkönig, Hagengebirge, Göllstock, Loferer und Leoganger Steinberge, Oberpinzgauer Grasberge, Großvenedigergruppe Nord, Großvenedigergruppe Alpenhauptkamm, Kitzbüheler Alpen, Glemmtal, Glocknergruppe Nord, Glocknergruppe Alpenhauptkamm, Dientner Grasberge, Goldberggruppe Nord, Tennengebirge, Gosaukamm, Niedere Tauern Nord, Ankogelgruppe, Muhr, Niedere Tauern Süd, Goldberggruppe Alpenhauptkamm, Niedere Tauern Alpenhauptkamm**



as rain sets in, wet-snow avalanches from wooded zones, below 2400m



above 2600m, near ridges, in transitions from little to lots of snow

## Wet-snow problem & persistent weak layer in high alpine regions

Avalanche danger above 1700m is MODERATE, below that altitude danger is LOW. Naturally triggered wet loose-snow avalanches below 2400m and isolated glide-snow avalanches in extremely steep grassy terrain are possible. They can reach medium size, in isolated cases even large size. Danger zones are particularly steep wooded zones. Danger zones for slab avalanches occur in high alpine regions in NW/N/E aspects, in high alpine regions also on steep south-facing slopes. There, especially large additional loading can trigger a dangerously large slab. Avalanche prone locations occur particularly near ridges and in wind-loaded gullies and steep bowls.

### Snowpack structure

A string of spring days has hastened the snow's disappearance from the slopes. The snowpack is 0-degree isotherm and is being further burdened by rainfall. Above 2600m there are weak layers inside the snowpack (near the reddish brown layer of Sahara dust) where several medium-sized and one large-sized avalanche were recently triggered.

### Weather

Thursday night skies will be heavily overcast, rainfall will spread starting in the early morning hours. On Friday, repeated bouts of rainfall, visibility often reduced, though short bright intervals are possible from place to place. Initially NW winds will be light, as of midday they will intensify. At 2000 m: +3 degrees, at 3000m: -4 degrees.

On Saturday, initially residual clouds and rain/snow showers (snowfall level at 1200m, in high alpine regions maximum 10-15 cm of fresh snow). The northerly winds will reach windspeeds of 50 km/hr in the Tauern, they will be weaker in the Northern Alps. At 2000 m: -2 degrees; at 3000 m: -10 degrees.

### Outlook

On Saturday at high altitudes, a bit of fresh snow which will bond well with the moist snowpack base. Despite lower temperatures the wet-snow problem will persist wherever there is sufficient snow on

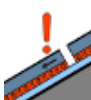
#### Avalanche problems



New snow



Wind drifted snow



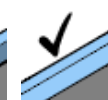
Persistent weak layer



Wet snow



Gliding snow



No problem

#### Danger ratings



1

low



2

moderate



3

considerable



4

high



5

very high

#### Expositions



**15.04.2022**

the ground.

---

**Avalanche problems**



New snow



Wind drifted  
snow



Persistent  
weak layer



Wet snow



Gliding  
snow



No problem

**Danger ratings**



1

low



2

moderate



3

considerabl  
e



4

high



5

very high

**Expositions**

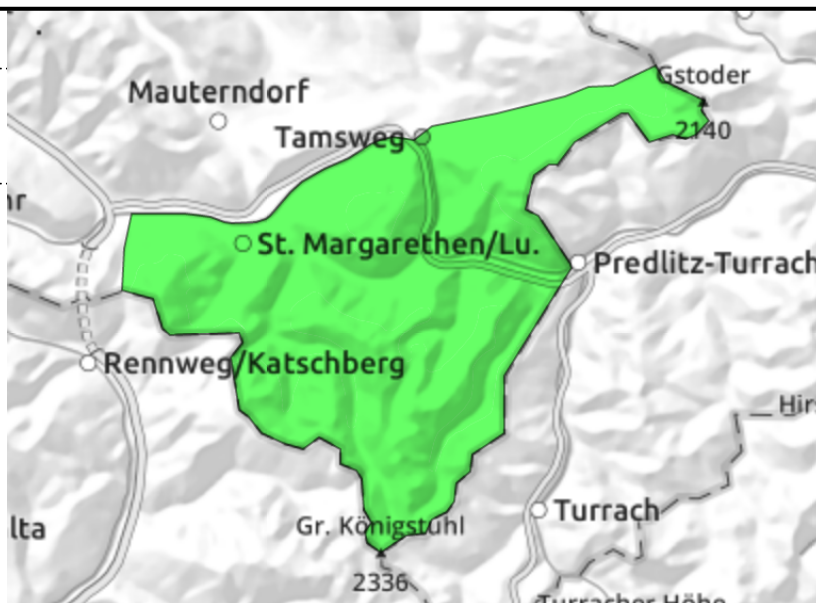


**15.04.2022**

**Nockberge**



as rain sets in, up to high altitudes



**Wet-snow problem & persistent weak layer in high alpine regions**

Avalanche danger is LOW. Due to rain seepage into the snowpack, naturally triggered wet loose-snow avalanches and isolated glide-snow avalanches are possible. Most remain small, but some can grow to medium size.

**Snowpack structure**

A string of spring days has hastened the snow's disappearance from the slopes. The snowpack is 0-degree isotherm and is being further burdened by rainfall.

**Weather**

Thursday night skies will be heavily overcast, rainfall will spread starting in the early morning hours. On Friday, repeated bouts of rainfall, visibility often reduced, though short bright intervals are possible from place to place. The northerly winds will reach windspeeds of 50 km/hr. At 2000 m: +4 degrees.

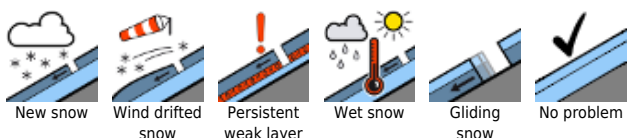
On Saturday, initially heavy residual rain clouds with rain/snow showers (snowfall level 1200m). Temperatures will drop. At 2000m: -3 degrees.

**Outlook**

On Saturday despite lower temperatures the wet-snow problem will persist wherever there is sufficient snow on the ground.

Translated by Jeffrey McCabe, [www.creativtrans.com](http://www.creativtrans.com)

**Avalanche problems**



**Danger ratings**



**Expositions**

