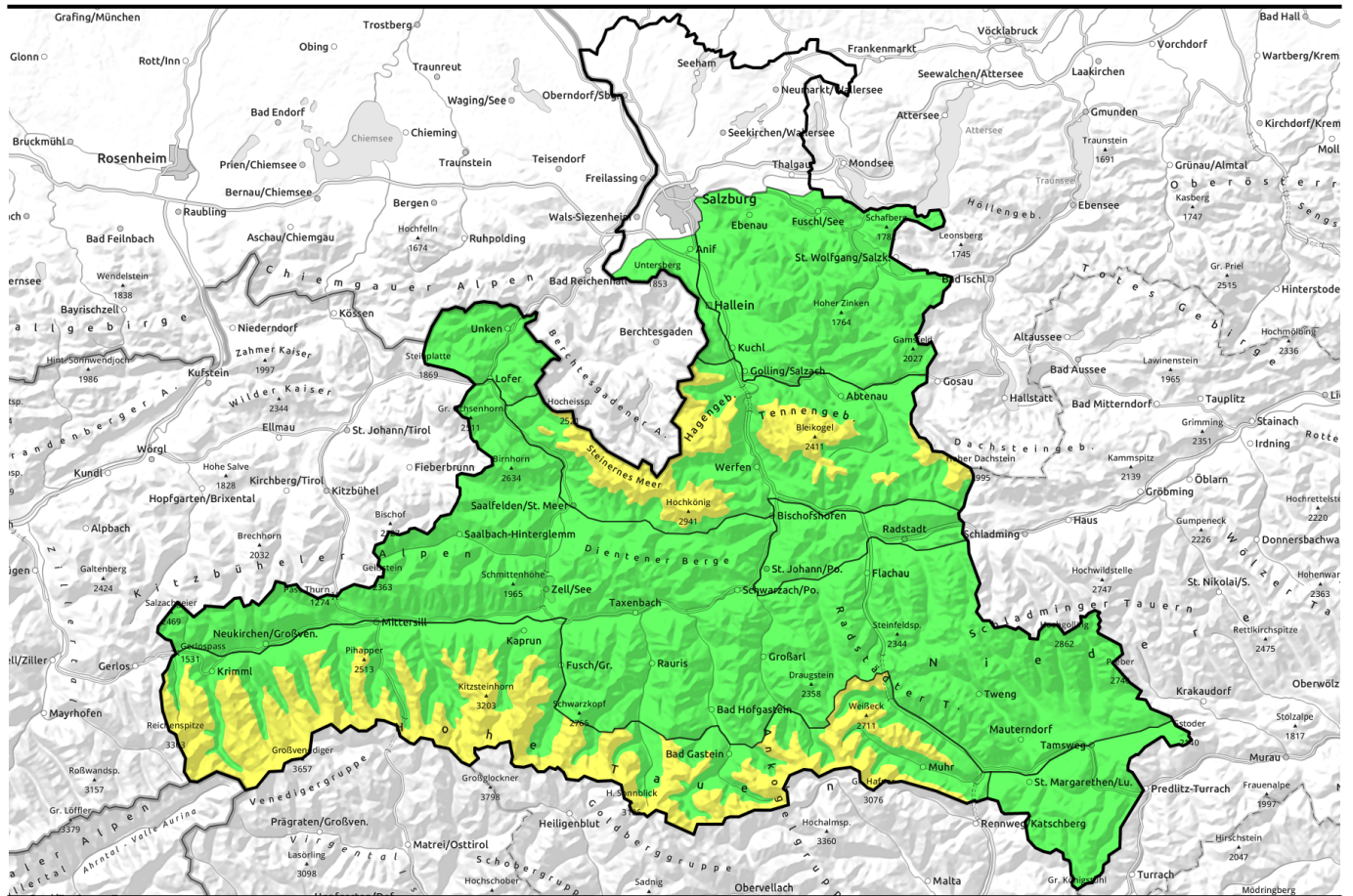


# 14.04.2022, morning



## Daytime cycle of naturally triggered avalanches and high-alpine slab avalanche potential

	<p>Nockberge, Osterhorngruppe, Gamsfeldgruppe, Chiemgauer Alpen, Heutal, Reiteralpe, Pongauer Grasberge</p>	
	<p>Loferer und Leoganger Steinberge, Kitzbüheler Alpen, Glemmtal, Oberpinzgauer Grasberge, Dientner Grasberge, Goldberggruppe Nord, Niedere Tauern Nord, Niedere Tauern Süd, Untersbergstock, Niedere Tauern Alpenhauptkamm</p>	
	<p>Steinernes Meer, Hochkönig, Hagengebirge, Göllstock, Tennengebirge, Gosaukamm, Großvenedigergruppe Nord, Großvenedigergruppe Alpenhauptkamm, Glocknergruppe Nord, Glocknergruppe Alpenhauptkamm, Goldberggruppe Alpenhauptkamm, Ankogelgruppe, Muhr</p>	

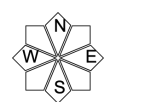
### Avalanche problems



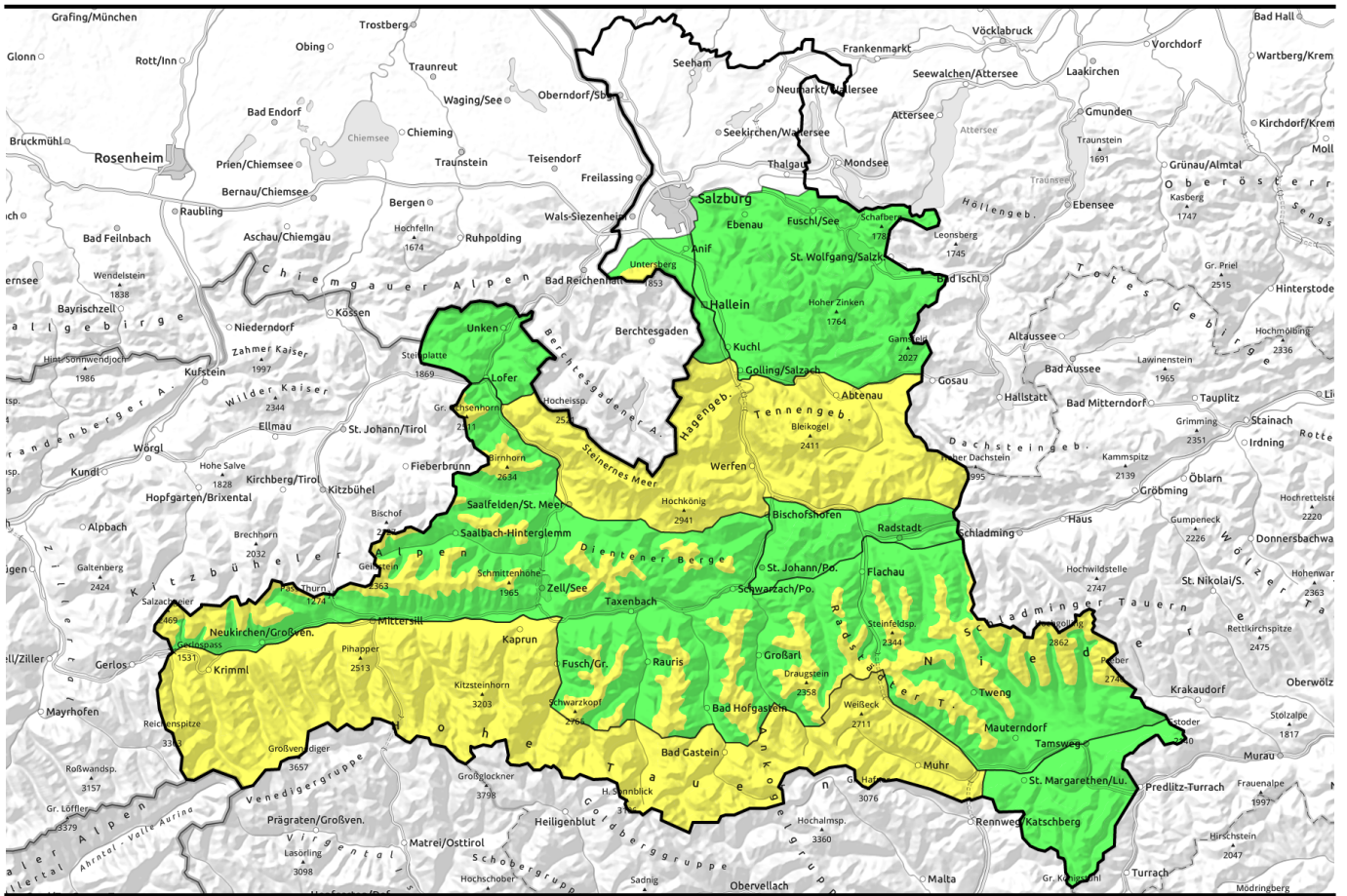
### Danger ratings



### Expositions



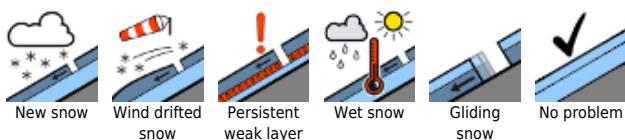
# 14.04.2022, afternoon



## Tagesgang spontaner Lawinen und hochalpines Schneebrettpotenzial

	<p>Nockberge, Osterhorngruppe, Gamsfeldgruppe, Chiemgauer Alpen, Heutal, Reiteralpe, Pongauer Grasberge</p>	
	<p>Loferer und Leoganger Steinberge, Kitzbüheler Alpen, Glemmtal, Oberpinzgauer Grasberge, Dientner Grasberge, Goldberggruppe Nord, Niedere Tauern Nord, Niedere Tauern Süd, Untersbergstock, Niedere Tauern Alpenhauptkamm</p>	
<p>1500 m</p>		
	<p>Steinernes Meer, Hochkönig, Hagengebirge, Göllstock, Tennengebirge, Gosaukamm, Großvenedigergruppe Nord, Großvenedigergruppe Alpenhauptkamm, Glocknergruppe Nord, Glocknergruppe Alpenhauptkamm, Goldberggruppe Alpenhauptkamm, Ankogelgruppe, Muhr</p>	

### Avalanche problems



### Danger ratings



### Expositions



**14.04.2022**

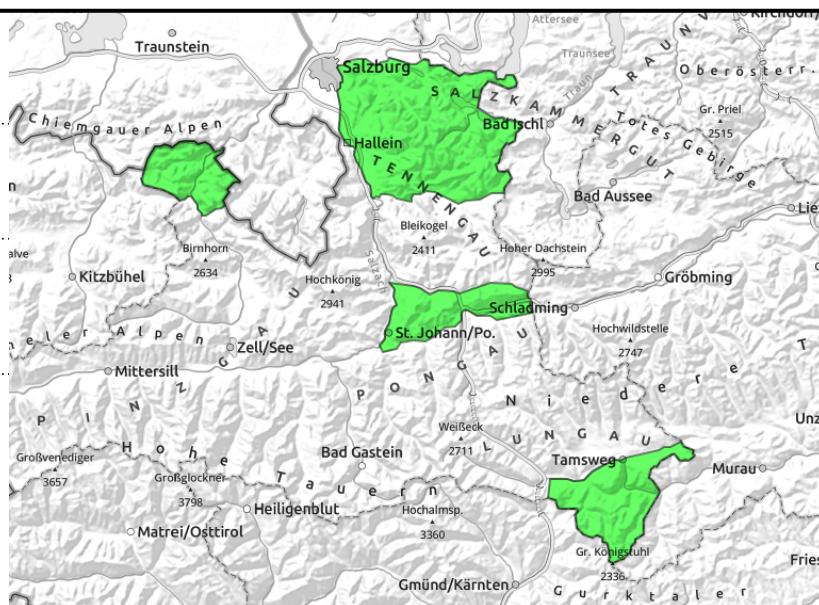
**Nockberge, Osterhorngruppe, Gamsfeldgruppe, Chiemgauer Alpen, Heutal, Reiteralpe, Pongauer Grasberge**



daytime cycle of naturally triggered avalanche activity, wet-snow avalanches



on extremely steep grassy slopes



## Few danger zones, daytime loss of firmness

Wet-snow problem: avalanche danger is LOW with a daytime cycle within this danger level, leading to naturally triggered avalanches. These will mostly be small-sized, in isolated cases medium-sized. In addition, steep slopes which have not yet discharged can release medium glide-snow avalanches at any time of day or night.

### Snowpack structure

The slopes are rapidly becoming bare of snow. The thoroughly wet snowpack has a melt-freeze crust in early morning capable of bearing loads. Warmth and solar radiation will soften the crust and lead to a loss of firmness of the snowpack.

### Weather

On Thursday, following a night of good outgoing longwave radiation, sunny weather to start with, and some high-altitude clouds. In the afternoon cloud cover will become denser, convective cloud build-up can be expected, isolated showers are then likelier. Winds from the north will be moderate to brisk. At 2000 m: 8 degrees.

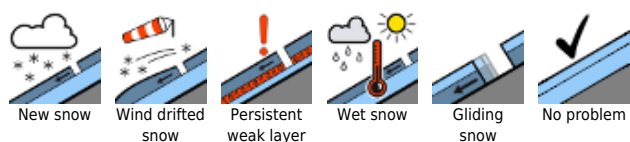
Thursday night skies will be overcast, rainfall up to the summit regions is expected.

On Friday, repeated bouts of rainfall, often reduced visibility, punctuated by brighter interims, although only brief ones. The NW winds light to start with, intensifying a little as of midday. At 2000 m: 3 degrees.

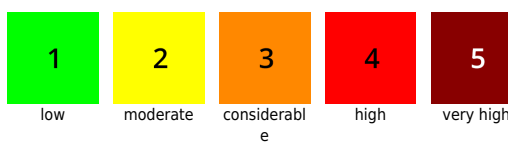
### Outlook

No cold reserves in the snowpack on Friday. Moderate danger of naturally triggered wet-snow avalanches due to rainfall.

#### Avalanche problems



#### Danger ratings

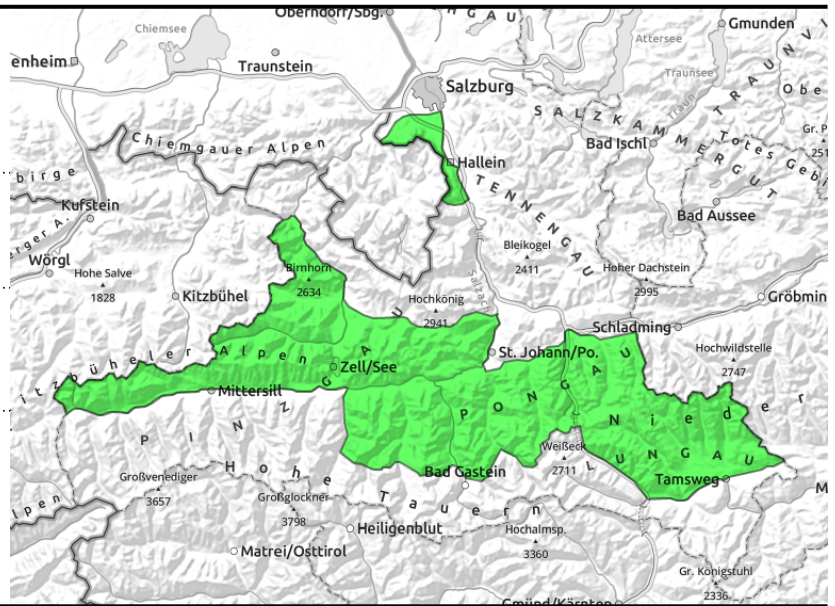


#### Expositions



# 14.04.2022, morning

**Loferer und Leoganger Steinberge, Kitzbüheler Alpen, Glemmtal, Oberpinzgauer Grasberge, Dientner Grasberge, Goldberggruppe Nord, Niedere Tauern Nord, Niedere Tauern Süd, Untersbergstock, Niedere Tauern Alpenhauptkamm**



daytime cycle of naturally triggered avalanche activity



in extremely steep grassy terrain, possible at any time of day or night

## Daytime loss of snowpack firmness up to high altitudes

Avalanche danger in early morning is LOW, then rises to MODERATE above 1500m by midday. Isolated danger zones for slab avalanches occur in ridgeline E/S aspects at high altitudes and in wind-loaded gullies and bowls. There, with large additional loading (e.g. from a fall), a slab avalanche is possible.

Naturally triggered wet loose-snow avalanches (also from additional loading) are possible in sun-drenched steep terrain and isolated glide-snow avalanches in extremely steep grassy terrain. These can reach medium size, in isolated cases large size.

### Snowpack structure

Fresh snow and drifts from the weekend have settled well, the snowpack is thoroughly wet up to 2600 m. The proneness to triggering (E/S) has receded. Steep sunny slopes have a melt-freeze crust capable of bearing loads in early morning, then softening up quickly during the daytime, depending on aspect and altitude. The smooth layer containing Sahara dust has the greatest potential to become a weak layer; however, isolated releases have fractured deeper down still inside the snowpack.

### Weather

On Thursday, following a night of good outgoing longwave radiation, sunny weather to start with, and some high-altitude clouds. In the afternoon cloud cover will become denser, convective cloud build-up can be expected, isolated showers are then likelier. Winds from the north will be moderate to brisk. At 2000 m: 8 degrees.

Thursday night skies will be overcast, rainfall up to the summit regions is expected.

On Friday, repeated bouts of rainfall, often reduced visibility, punctuated by brighter interims, although only brief ones. The NW winds light to start with, intensifying a little as of midday. At 2000 m: 3 degrees.

### Outlook

No cold reserves in the snowpack on Friday. Bad day for backcountry tours. MODERATE danger of avalanches right from the start.

#### Avalanche problems



#### Danger ratings

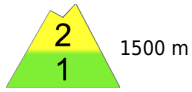
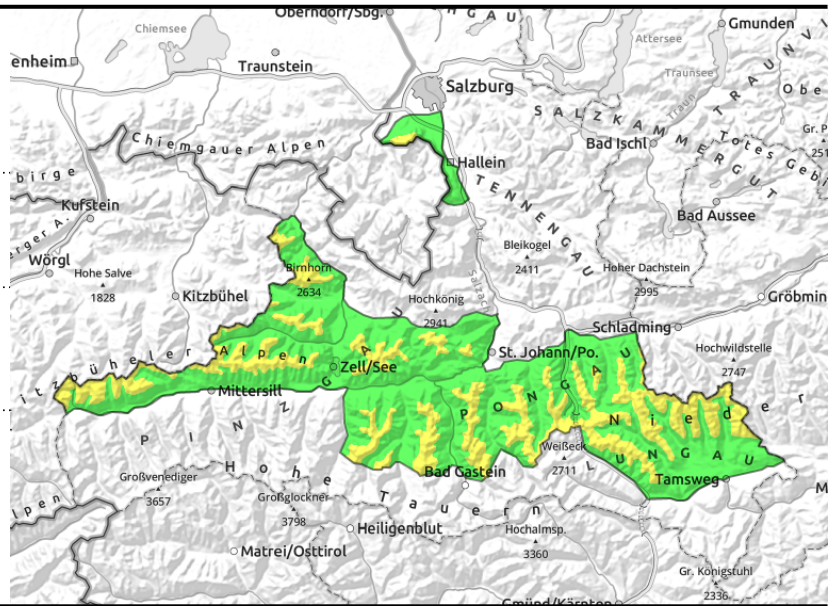




#### Expositions





# 14.04.2022, afternoon

**Loferer und Leoganger Steinberge, Kitzbüheler Alpen, Glemmtal, Oberpinzgauer Grasberge, Dientner Grasberge, Goldberggruppe Nord, Niedere Tauern Nord, Niedere Tauern Süd, Untersbergstock, Niedere Tauern Alpenhauptkamm**



  daytime cycle of naturally triggered avalanche activity

  in extremely steep grassy terrain, possible at any time of day or night

## Daytime loss of snowpack firmness up to high altitudes

Avalanche danger in early morning is LOW, then rises to MODERATE above 1500m by midday. Isolated danger zones for slab avalanches occur in ridgeline E/S aspects at high altitudes and in wind-loaded gullies and bowls. There, with large additional loading (e.g. from a fall), a slab avalanche is possible.

Naturally triggered wet loose-snow avalanches (also from additional loading) are possible in sun-drenched steep terrain and isolated glide-snow avalanches in extremely steep grassy terrain. These can reach medium size, in isolated cases large size.

### Snowpack structure

Fresh snow and drifts from the weekend have settled well, the snowpack is thoroughly wet up to 2600 m. The proneness to triggering (E/S) has receded. Steep sunny slopes have a melt-freeze crust capable of bearing loads in early morning, then softening up quickly during the daytime, depending on aspect and altitude. The smooth layer containing Sahara dust has the greatest potential to become a weak layer; however, isolated releases have fractured deeper down still inside the snowpack.

### Weather

On Thursday, following a night of good outgoing longwave radiation, sunny weather to start with, and some high-altitude clouds. In the afternoon cloud cover will become denser, convective cloud build-up can be expected, isolated showers are then likelier. Winds from the north will be moderate to brisk. At 2000 m: 8 degrees.

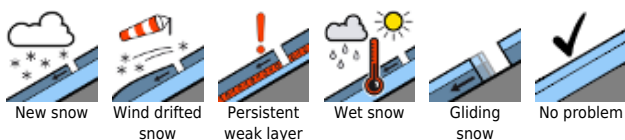
Thursday night skies will be overcast, rainfall up to the summit regions is expected.

On Friday, repeated bouts of rainfall, often reduced visibility, punctuated by brighter interims, although only brief ones. The NW winds light to start with, intensifying a little as of midday. At 2000 m: 3 degrees.

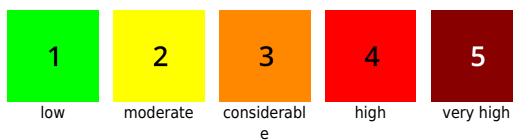
### Outlook

No cold reserves in the snowpack on Friday. Bad day for backcountry tours. MODERATE danger of avalanches right from the start.

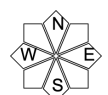
#### Avalanche problems



#### Danger ratings

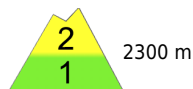


#### Expositions



# 14.04.2022, morning

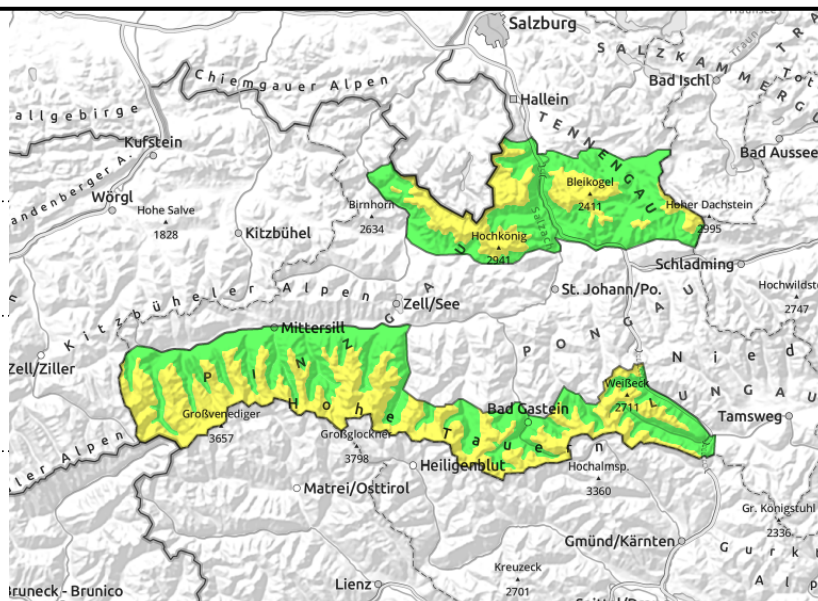
Steinernes Meer, Hochkönig, Hagengebirge, Göllstock, Tennengebirge, Gosaukamm, Großvenedigergruppe Nord, Großvenedigergruppe Alpenhauptkamm, Glocknergruppe Nord, Glocknergruppe Alpenhauptkamm, Goldberggruppe Alpenhauptkamm, Ankogelgruppe, Muhr



daytime cycle of naturally triggered avalanche activity, wet-snow avalanches



triggerable in transitions from little to much snow, likelihood of triggering reinforced by daytime decrease in snowpack firmness



## Daytime loss of snowpack firmness and high-alpine snowdrifts

Avalanche danger above 2300m is MODERATE, otherwise LOW in early morning, then rising to MODERATE by midday.

Avalanche prone locations for slab avalanches occur at high altitudes in NW/N/E aspects, in high alpine regions also in southern aspects on steep slopes. Particularly in shady terrain, even minimum additional loading is sufficient to release a small-to-medium slab avalanche. Danger zones are near to ridges and in wind-loaded gullies and bowls.

Naturally triggered wet loose-snow avalanches (also from additional loading) are possible in sun-drenched steep terrain and isolated glide-snow avalanches in extremely steep grassy terrain. These can reach medium size, in isolated cases large size.

### Snowpack structure

Fresh snow and drifts from the weekend have settled well, the snowpack is thoroughly wet up to 2600 m. The proneness to triggering (E/S) has receded. Steep sunny slopes have a melt-freeze crust capable of bearing loads in early morning, then softening up quickly during the daytime, depending on aspect and altitude. The smooth layer containing Sahara dust has the greatest potential to become a weak layer; however, isolated releases have fractured deeper down still inside the snowpack.

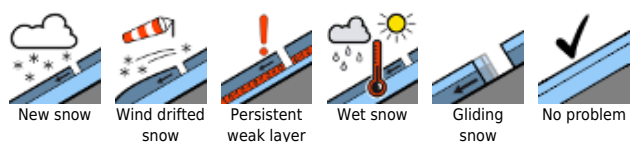
### Weather

On Thursday, following a night of good outgoing longwave radiation, sunny weather to start with, and some high-altitude clouds. In the afternoon cloud cover will become denser, convective cloud build-up can be expected, isolated showers are then likelier. Winds from the north will be moderate to brisk. At 2000 m: 8 degrees, at 3000m: +2 degrees.

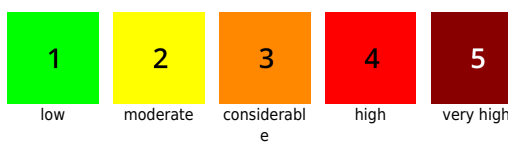
Thursday night skies will be overcast, rainfall up to the summit regions is expected.

On Friday, repeated bouts of rainfall, often reduced visibility, punctuated by brighter interims, although only brief ones. The NW winds light to start with, intensifying a little as of midday. At 2000 m: 3 degrees, at 3000 m: -3 degrees.

#### Avalanche problems



#### Danger ratings



#### Expositions

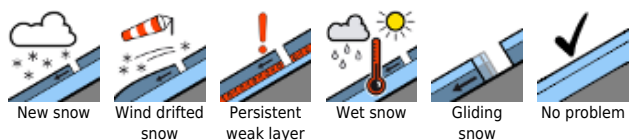


# 14.04.2022, morning

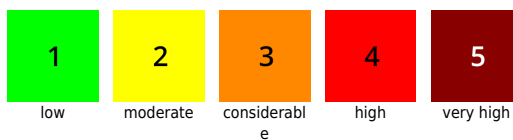
## Outlook

No cold reserves in the snowpack on Friday. Bad day for backcountry tours. MODERATE danger of avalanches right from the start.

### Avalanche problems



### Danger ratings

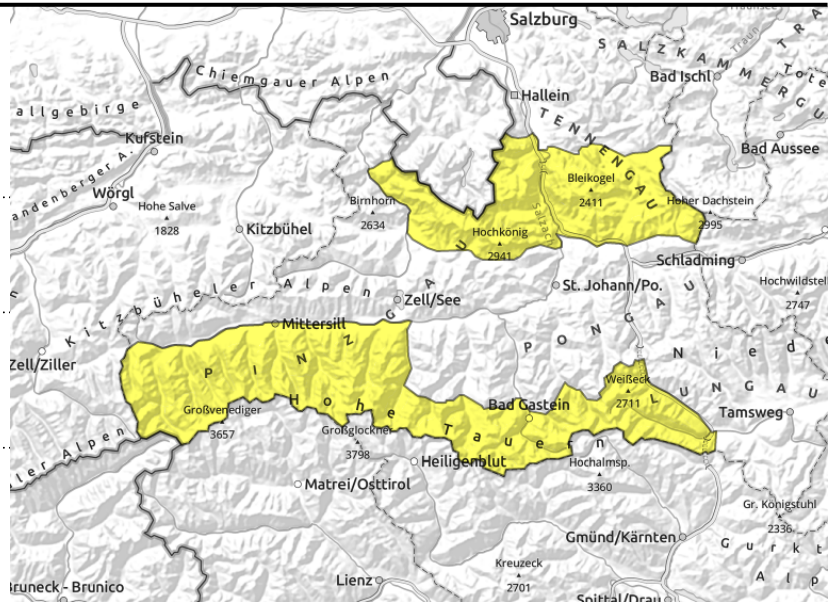


### Expositions



# 14.04.2022, afternoon

Steinernes Meer, Hochkönig, Hagengebirge, Göllstock, Tennengebirge, Gosaukamm, Großvenedigergruppe Nord, Großvenedigergruppe Alpenhauptkamm, Glocknergruppe Nord, Glocknergruppe Alpenhauptkamm, Goldberggruppe Alpenhauptkamm, Ankogelgruppe, Muhr



daytime cycle of naturally triggered avalanche activity, wet-snow avalanches



triggerable in transitions from little to much snow, likelihood of triggering reinforced by daytime decrease in snowpack firmness

## Daytime loss of snowpack firmness and high-alpine snowdrifts

Avalanche danger above 2300m is MODERATE, otherwise LOW in early morning, then rising to MODERATE by midday.

Avalanche prone locations for slab avalanches occur at high altitudes in NW/N/E aspects, in high alpine regions also in southern aspects on steep slopes. Particularly in shady terrain, even minimum additional loading is sufficient to release a small-to-medium slab avalanche. Danger zones are near to ridges and in wind-loaded gullies and bowls.

Naturally triggered wet loose-snow avalanches (also from additional loading) are possible in sun-drenched steep terrain and isolated glide-snow avalanches in extremely steep grassy terrain. These can reach medium size, in isolated cases large size.

### Snowpack structure

Fresh snow and drifts from the weekend have settled well, the snowpack is thoroughly wet up to 2600 m. The proneness to triggering (E/S) has receded. Steep sunny slopes have a melt-freeze crust capable of bearing loads in early morning, then softening up quickly during the daytime, depending on aspect and altitude. The smooth layer containing Sahara dust has the greatest potential to become a weak layer; however, isolated releases have fractured deeper down still inside the snowpack.

### Weather

On Thursday, following a night of good outgoing longwave radiation, sunny weather to start with, and some high-altitude clouds. In the afternoon cloud cover will become denser, convective cloud build-up can be expected, isolated showers are then likelier. Winds from the north will be moderate to brisk. At 2000 m: 8 degrees, at 3000m: +2 degrees.

Thursday night skies will be overcast, rainfall up to the summit regions is expected.

On Friday, repeated bouts of rainfall, often reduced visibility, punctuated by brighter interims, although only brief ones. The NW winds light to start with, intensifying a little as of midday. At 2000 m: 3 degrees, at 3000 m: -3 degrees.

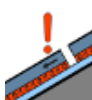
#### Avalanche problems



New snow



Wind drifted snow



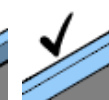
Persistent weak layer



Wet snow

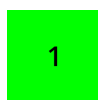


Gliding snow



No problem

#### Danger ratings



1

low



2

moderate



3

considerable



4

high



5

very high

#### Expositions



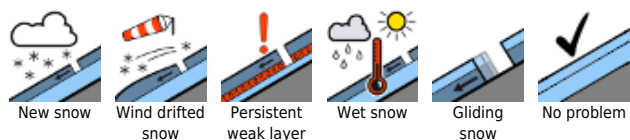
## 14.04.2022, afternoon

### Outlook

No cold reserves in the snowpack on Friday. Bad day for backcountry tours. MODERATE danger of avalanches right from the start.

Translated by Jeffrey McCabe, [www.creativtrans.com](http://www.creativtrans.com)

#### Avalanche problems



#### Danger ratings



#### Expositions

