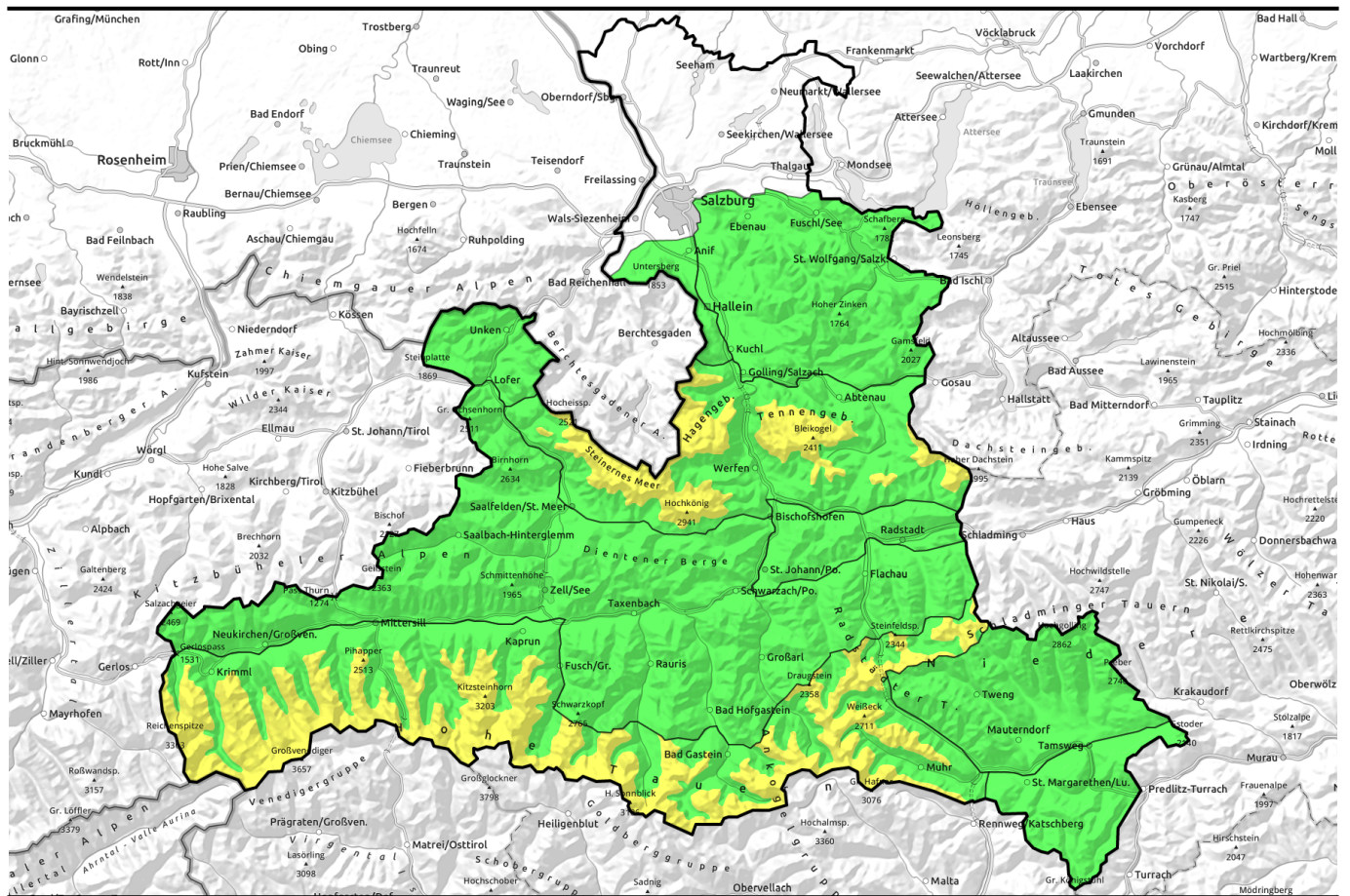


13.04.2022, morning



Daytime cycle of naturally triggered avalanches and high-alpine slab potential

	<p>Nockberge, Osterhorngruppe, Gamsfeldgruppe, Chiemgauer Alpen, Heutal, Reiteralpe, Pongauer Grasberge</p>	
	<p>Loferer und Leoganger Steinberge, Kitzbüheler Alpen, Glemmtal, Oberpinzgauer Grasberge, Dientner Grasberge, Goldberggruppe Nord, Niedere Tauern Nord, Niedere Tauern Süd, Untersbergstock</p>	
	<p>Steinernes Meer, Hochkönig, Hagengebirge, Göllstock, Tennengebirge, Gosaukamm, Großvenedigergruppe Nord, Großvenedigergruppe Alpenhauptkamm, Glocknergruppe Nord, Glocknergruppe Alpenhauptkamm, Goldberggruppe Alpenhauptkamm, Niedere Tauern Alpenhauptkamm, Ankogelgruppe, Muhr</p>	

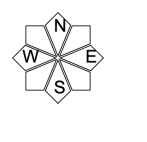
Avalanche problems



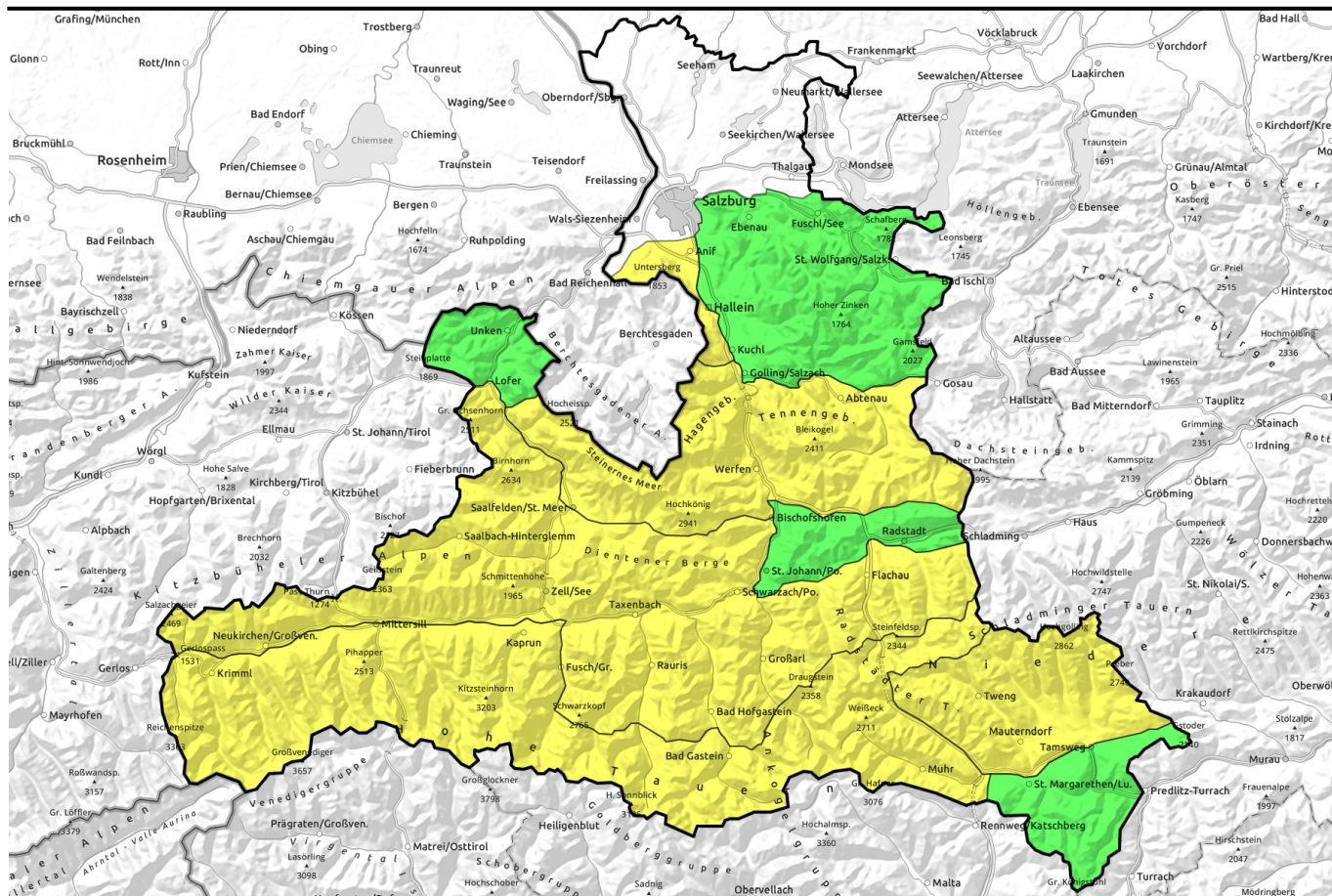
Danger ratings



Expositions



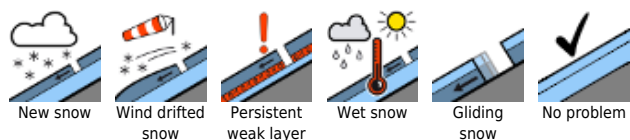
13.04.2022, afternoon



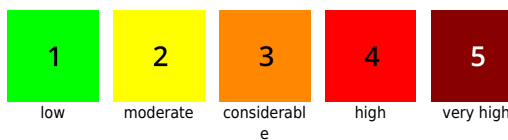
Tagesgang spontaner Lawinen und hochalpines Schneebrettpotenzial

	<p>Nockberge, Osterhorngruppe, Gamsfeldgruppe, Chiemgauer Alpen, Heutal, Reiteralpe, Pongauer Grasberge</p>	
	<p>Loferer und Leoganger Steinberge, Kitzbüheler Alpen, Glemmtal, Oberpinzgauer Grasberge, Dientner Grasberge, Goldberggruppe Nord, Niedere Tauern Nord, Niedere Tauern Süd, Untersbergstock</p>	
	<p>Steinernes Meer, Hochkönig, Hagengebirge, Göllstock, Tennengebirge, Gosaukamm, Großvenedigergruppe Nord, Großvenedigergruppe Alpenhauptkamm, Glocknergruppe Nord, Glocknergruppe Alpenhauptkamm, Goldberggruppe Alpenhauptkamm, Niedere Tauern Alpenhauptkamm, Ankogelgruppe, Muhr</p>	

Avalanche problems



Danger ratings

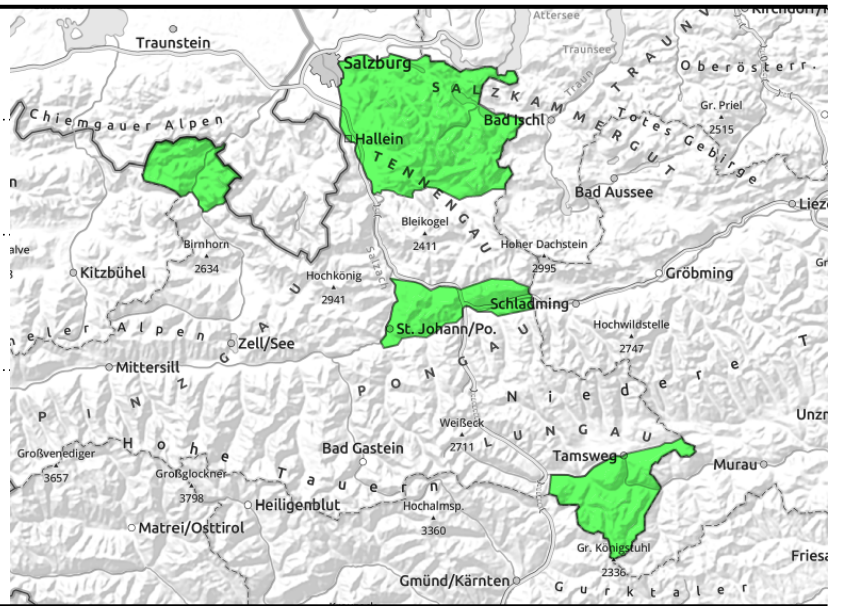


Expositions



13.04.2022

Nockberge, Osterhorngruppe, Gamsfeldgruppe, Chiemgauer Alpen, Heutal, Reiteralpe, Pongauer Grasberge



daytime cycle of naturally triggered avalanches, wet loose-snow avalanches



in extremely steep grass-covered terrain

Few danger zones, daytime loss of firmness

Wet-snow problem: avalanche danger is LOW, with a daytime cycle of danger within this level. Due to daytime loss of firmness, naturally triggered (or artificially triggered) wet loose-snow avalanches and isolated glide-snow avalanches are possible. These will be mostly small, only in isolated cases medium sized.

Snowpack structure

The slopes are becoming bare of snow. The thoroughly wet snowpack has a melt-freeze crust capable of bearing loads in early morning. Solar radiation and higher temperatures then soften the crust and lead to a loss of firmness in steep terrain.

Weather

On Wednesday, following a night of adequate outgoing longwave radiation, it will be sunny. Some diffuse light due to high-altitude clouds. In exposed terrain, moderate S/E winds. At 2000 m: very mild, 10 degrees. On Wednesday night, more clouds, but the outgoing radiation might still be able to regain firmness.

On Thursday, favorable conditions to start with, with sunshine and some high-altitude clouds which can intermittently dampen the sunshine. In the afternoon a slight risk of showers. Winds will be brisk from the north. At 2000 m: 8 degrees.

Outlook

Little change in the springtime conditions on Thursday

Avalanche problems



New snow



Wind drifted snow



Persistent weak layer



Wet snow



Gliding snow



No problem

Danger ratings



1

low



2

moderate



3

considerable



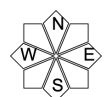
4

high



5

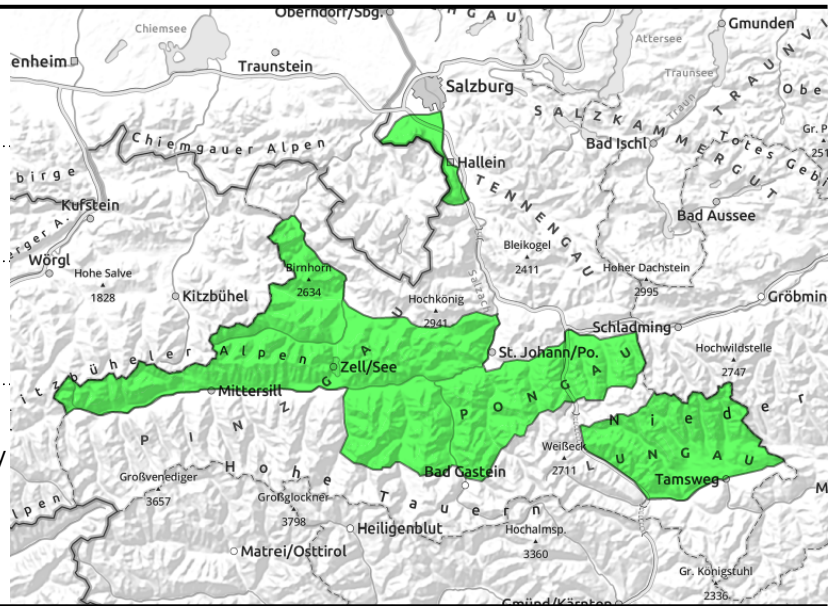
very high



Expositions

13.04.2022, morning

Loferer und Leoganger Steinberge, Kitzbüheler Alpen, Glemmtal, Oberpinzgauer Grasberge, Dientner Grasberge, Goldberggruppe Nord, Niedere Tauern Nord, Niedere Tauern Süd, Untersbergstock



daytime cycle of naturally triggered avalanches



in extremely steep grass-covered terrain, possible at any time of day or night

Daytime loss of firmness even up to high altitudes

Avalanche danger in early morning is LOW, then rises to MODERATE at midday at latest.

Isolated danger zones for slab avalanches occur near ridges in E/W aspects at high altitudes and in wind-loaded gullies and bowls. There in particular a slab avalanche can be triggered, particularly by large additional loading, e.g. a fall.

Naturally triggered wet-snow avalanches (also from additional loading) occur on sun-drenched steep slopes and isolated glide-snow avalanches on extremely steep grassy slopes. These can reach medium size, in isolated cases large size.

Snowpack structure

The recent snowfall in high alpine regions has settled and has been moistened up to 2600 m at least superficially. The proneness to triggering in E/S aspects has receded. On steep sunny slopes the snowpack has a melt-freeze crust in early morning which is capable of bearing loads, then softens at varying quickness during the day depending on altitude and aspect. A potential weak layer: The smooth Sahara-brown snowpack layer, but isolated releases fractured deeper down.

Weather

On Wednesday, following a night of adequate outgoing longwave radiation, it will be sunny. Some diffuse light due to high-altitude clouds. In exposed terrain, moderate S/E winds. At 2000 m: very mild, 10 degrees. On Wednesday night, more clouds, but the outgoing radiation might still be able to regain firmness.

On Thursday, favorable conditions to start with, with sunshine and some high-altitude clouds which can intermittently dampen the sunshine. In the afternoon a slight risk of showers. Winds will be brisk from the north. At 2000 m: 8 degree, at 3000 m: +2 degrees.

Outlook

Due to noticeably higher temperatures a pronounced daytime cycle of naturally triggered avalanche danger. Good time management is crucial.

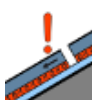
Avalanche problems



New snow



Wind drifted snow



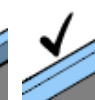
Persistent weak layer



Wet snow

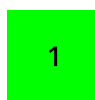


Gliding snow



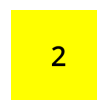
No problem

Danger ratings



1

low



2

moderate



3

considerable



4

high



5

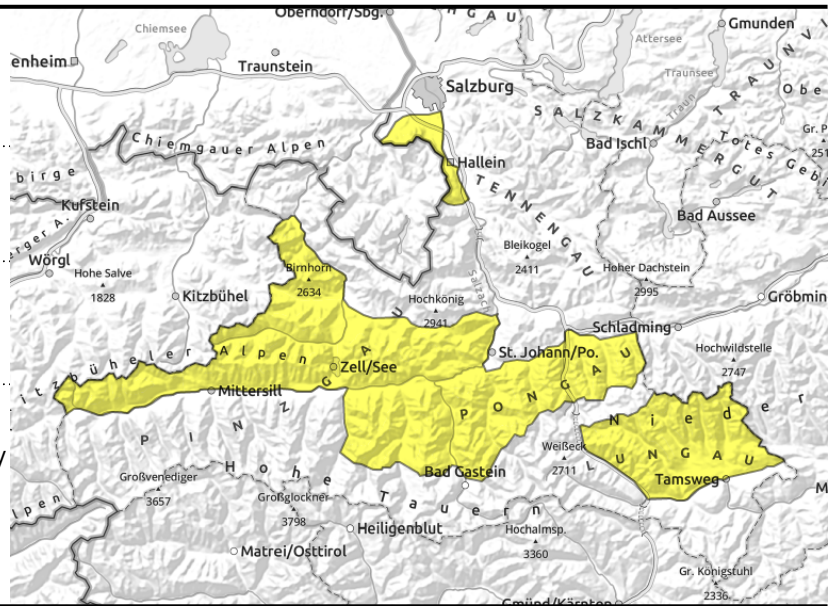
very high



Expositions

13.04.2022, afternoon

Loferer und Leoganger Steinberge, Kitzbüheler Alpen, Glemmtal, Oberpinzgauer Grasberge, Dientner Grasberge, Goldberggruppe Nord, Niedere Tauern Nord, Niedere Tauern Süd, Untersbergstock



daytime cycle of naturally triggered avalanches



in extremely steep grass-covered terrain, possible at any time of day or night

Daytime loss of firmness even up to high altitudes

Avalanche danger in early morning is LOW, then rises to MODERATE at midday at latest.

Isolated danger zones for slab avalanches occur near ridges in E/W aspects at high altitudes and in wind-loaded gullies and bowls. There in particular a slab avalanche can be triggered, particularly by large additional loading, e.g. a fall.

Naturally triggered wet-snow avalanches (also from additional loading) occur on sun-drenched steep slopes and isolated glide-snow avalanches on extremely steep grassy slopes. These can reach medium size, in isolated cases large size.

Snowpack structure

The recent snowfall in high alpine regions has settled and has been moistened up to 2600 m at least superficially. The proneness to triggering in E/S aspects has receded. On steep sunny slopes the snowpack has a melt-freeze crust in early morning which is capable of bearing loads, then softens at varying quickness during the day depending on altitude and aspect. A potential weak layer: The smooth Sahara-brown snowpack layer, but isolated releases fractured deeper down.

Weather

On Wednesday, following a night of adequate outgoing longwave radiation, it will be sunny. Some diffuse light due to high-altitude clouds. In exposed terrain, moderate S/E winds. At 2000 m: very mild, 10 degrees. On Wednesday night, more clouds, but the outgoing radiation might still be able to regain firmness.

On Thursday, favorable conditions to start with, with sunshine and some high-altitude clouds which can intermittently dampen the sunshine. In the afternoon a slight risk of showers. Winds will be brisk from the north. At 2000 m: 8 degree, at 3000 m: +2 degrees.

Outlook

Due to noticeably higher temperatures a pronounced daytime cycle of naturally triggered avalanche danger. Good time management is crucial.

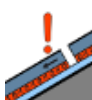
Avalanche problems



New snow



Wind drifted snow



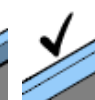
Persistent weak layer



Wet snow

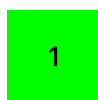


Gliding snow



No problem

Danger ratings



1

low



2

moderate



3

considerable



4

high



5

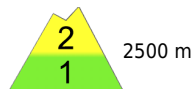
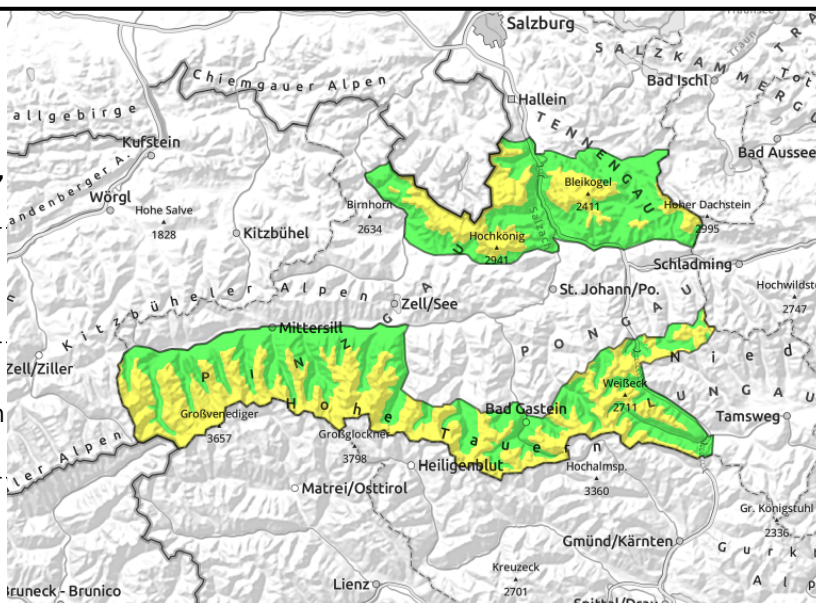
very high



Expositions





13.04.2022, morning

Steinernes Meer, Hochkönig, Hagengebirge, Göllstock, Tennengebirge, Gosaukamm, Großvenedigergruppe Nord, Großvenedigergruppe Alpenhauptkamm, Glocknergruppe Nord, Glocknergruppe Alpenhauptkamm, Goldberggruppe Alpenhauptkamm, Niedere Tauern Alpenhauptkamm, Ankogelgruppe, Muhr



  daytime cycle of naturally triggered avalanche activity, on sunny slopes up to 2600m

  near ridge lines, in gullies, steep bowls

Daytime loss of firmness and high-alpine snowdrift accumulations

Avalanche danger above 2500m is MODERATE right from the start. Elsewhere danger is LOW in early morning, then rises to MODERATE by midday at latest.

Danger zones for slab avalanches occur at high and high-alpine altitudes in NW/N/E aspects, in high alpine regions also in southern aspects in steep terrain. Particularly in connection with daytime warmth, even minimum additional loading can release a small-to-medium slab avalanche. Danger zones occur near ridges and in wind-loaded gullies, bowls.

Naturally triggered wet loose-snow avalanches (also skier-triggered) and in some places even slab avalanches (up to 2600m) on sun-drenched steep slopes and isolated glide-snow avalanches in extremely steep grassy terrain are possible. They can grow to medium, in isolated cases also to large size.

Snowpack structure

The recent snowfall in high alpine regions has settled and has been moistened up to 2600 m at least superficially. The proneness to triggering in E/S aspects has receded. However, a foehn-induced southerly wind in exposed terrain has transported snow to north-facing slopes, generating mostly shallow snowdrift accumulations and depositing them atop a loose base: they are still prone to triggering. On steep sunny slopes the snowpack has a melt-freeze crust in early morning which is capable of bearing loads, then softens at varying quickness during the day depending on altitude and aspect. A potential weak layer: The smooth Sahara-brown snowpack layer, but isolated releases fractured deeper down.

Weather

On Wednesday, following a night of adequate outgoing longwave radiation, it will be sunny. Some diffuse light due to high-altitude clouds. In exposed terrain, moderate S/E winds. At 2000 m: very mild, 10 degrees. On Wednesday night, more clouds, but the outgoing radiation might still be able to regain firmness.

On Thursday, favorable conditions to start with, with sunshine and some high-altitude clouds which can intermittently dampen the sunshine. In the afternoon a slight risk of showers. Winds will be brisk from the north. At 2000 m: 8 degree, at 3000 m: +2 degrees.

Avalanche problems



Danger ratings



Expositions

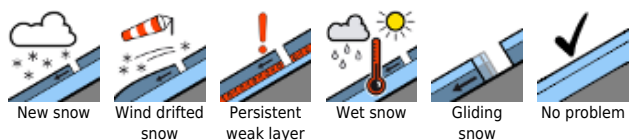


13.04.2022, morning

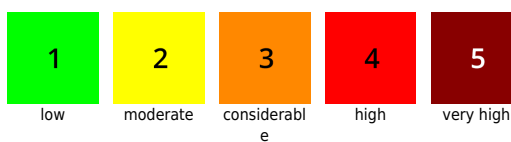
Outlook

Due to noticeably higher temperatures, a pronounced daytime danger cycle for naturally triggered avalanche activity will continue. Good time management is crucial. In high alpine regions, give heed to potential wind-loaded zones.

Avalanche problems



Danger ratings

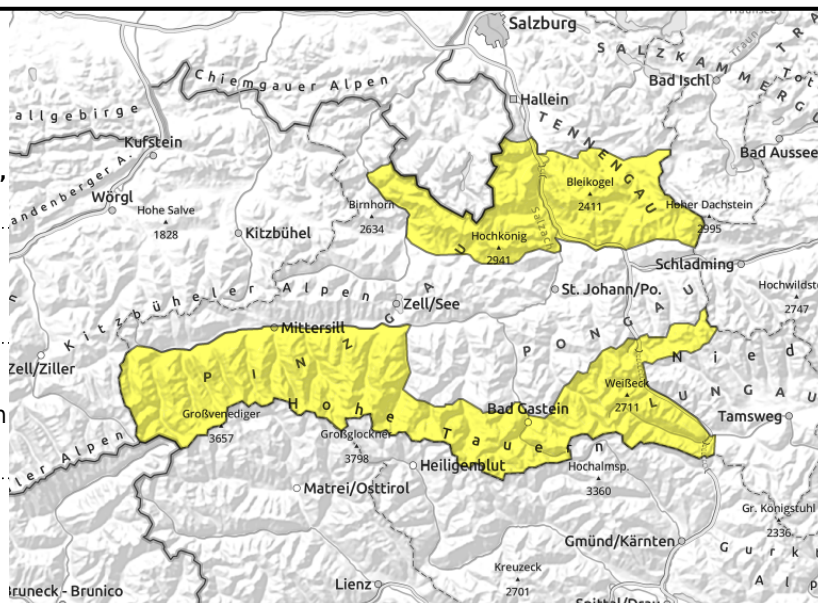


Expositions



13.04.2022, afternoon

Steinernes Meer, Hochkönig, Hagengebirge, Göllstock, Tennengebirge, Gosaukamm, Großvenedigergruppe Nord, Großvenedigergruppe Alpenhauptkamm, Glocknergruppe Nord, Glocknergruppe Alpenhauptkamm, Goldberggruppe Alpenhauptkamm, Niedere Tauern Alpenhauptkamm, Ankogelgruppe, Muhr



daytime cycle of naturally triggered avalanche activity, on sunny slopes up to 2600m



near ridge lines, in gullies, steep bowls

Daytime loss of firmness and high-alpine snowdrift accumulations

Avalanche danger above 2500m is MODERATE right from the start. Elsewhere danger is LOW in early morning, then rises to MODERATE by midday at latest.

Danger zones for slab avalanches occur at high and high-alpine altitudes in NW/N/E aspects, in high alpine regions also in southern aspects in steep terrain. Particularly in connection with daytime warmth, even minimum additional loading can release a small-to-medium slab avalanche. Danger zones occur near ridges and in wind-loaded gullies, bowls.

Naturally triggered wet loose-snow avalanches (also skier-triggered) and in some places even slab avalanches (up to 2600m) on sun-drenched steep slopes and isolated glide-snow avalanches in extremely steep grassy terrain are possible. They can grow to medium, in isolated cases also to large size.

Snowpack structure

The recent snowfall in high alpine regions has settled and has been moistened up to 2600 m at least superficially. The proneness to triggering in E/S aspects has receded. However, a foehn-induced southerly wind in exposed terrain has transported snow to north-facing slopes, generating mostly shallow snowdrift accumulations and depositing them atop a loose base: they are still prone to triggering. On steep sunny slopes the snowpack has a melt-freeze crust in early morning which is capable of bearing loads, then softens at varying quickness during the day depending on altitude and aspect. A potential weak layer: The smooth Sahara-brown snowpack layer, but isolated releases fractured deeper down.

Weather

On Wednesday, following a night of adequate outgoing longwave radiation, it will be sunny. Some diffuse light due to high-altitude clouds. In exposed terrain, moderate S/E winds. At 2000 m: very mild, 10 degrees. On Wednesday night, more clouds, but the outgoing radiation might still be able to regain firmness.

On Thursday, favorable conditions to start with, with sunshine and some high-altitude clouds which can intermittently dampen the sunshine. In the afternoon a slight risk of showers. Winds will be brisk from the north. At 2000 m: 8 degree, at 3000 m: +2 degrees.

Avalanche problems



Danger ratings



Expositions



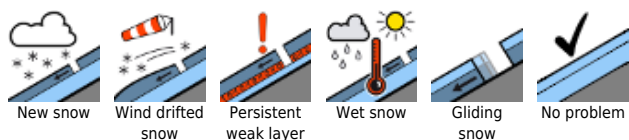
13.04.2022, afternoon

Outlook

Due to noticeably higher temperatures, a pronounced daytime danger cycle for naturally triggered avalanche activity will continue. Good time management is crucial. In high alpine regions, give heed to potential wind-loaded zones.

Translated by Jeffrey McCabe, www.creativtrans.com

Avalanche problems



Danger ratings



Expositions

