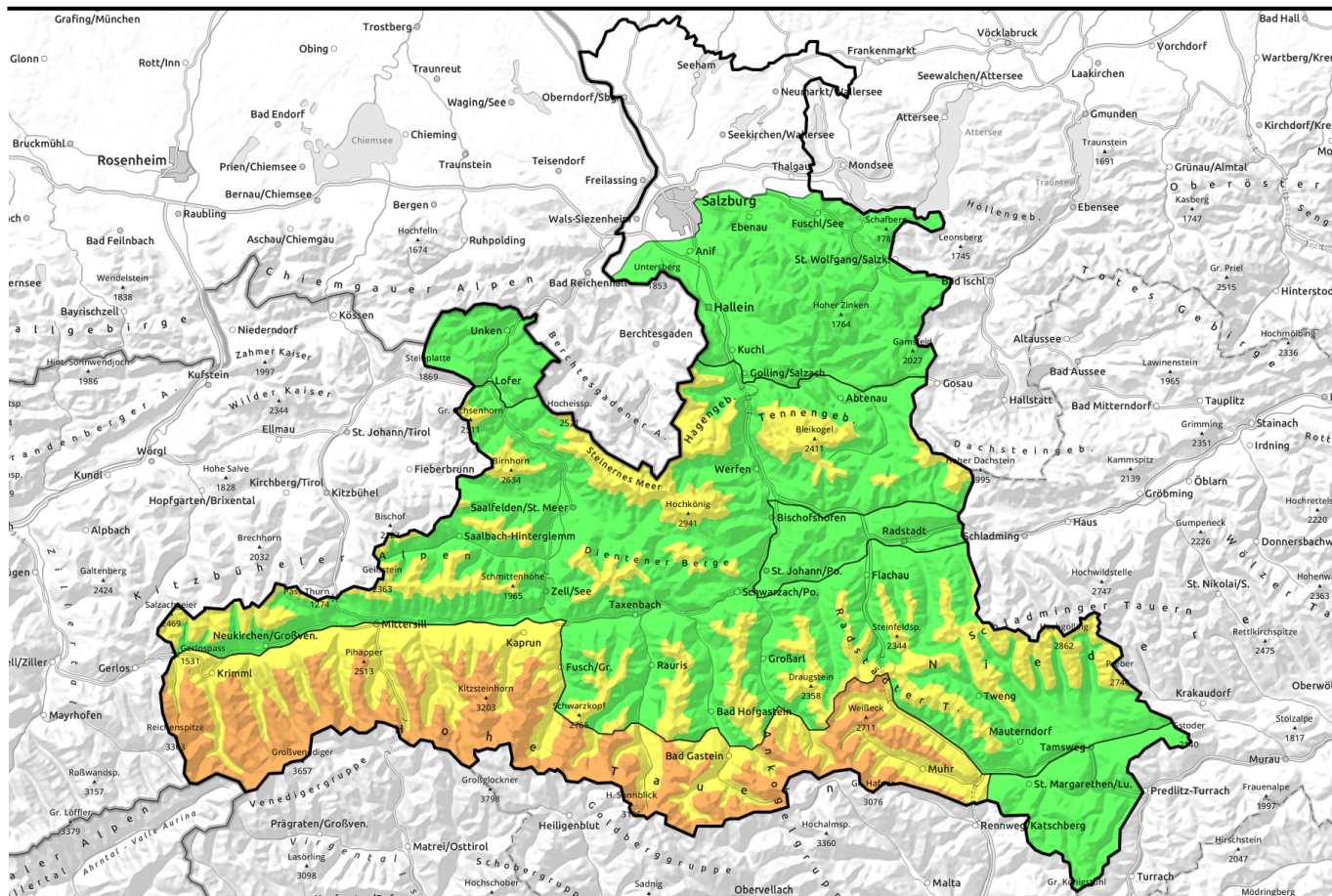


10.04.2022



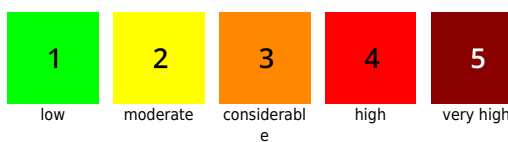
Caution: snowdrift accumulations

	Osterhorngruppe, Gamsfeldgruppe, Untersbergstock, Chiemgauer Alpen, Heutal, Reiteralpe, Pongauer Grasberge, Nockberge	
	1800 m Tennengebirge, Gosaukamm, Steinernes Meer, Hochkönig, Hagengebirge, Göllstock, Loferer und Leoganger Steinberge, Kitzbüheler Alpen, Glemmtal, Oberpinzgauer Grasberge, Dientner Grasberge, Goldberggruppe Nord, Niedere Tauern Nord, Niedere Tauern Alpenhauptkamm, Niedere Tauern Süd	
	2400 m Großvenedigergruppe Nord, Glocknergruppe Nord, Großvenedigergruppe Alpenhauptkamm, Glocknergruppe Alpenhauptkamm, Goldberggruppe Alpenhauptkamm, Ankogelgruppe, Muhr	

Avalanche problems



Danger ratings

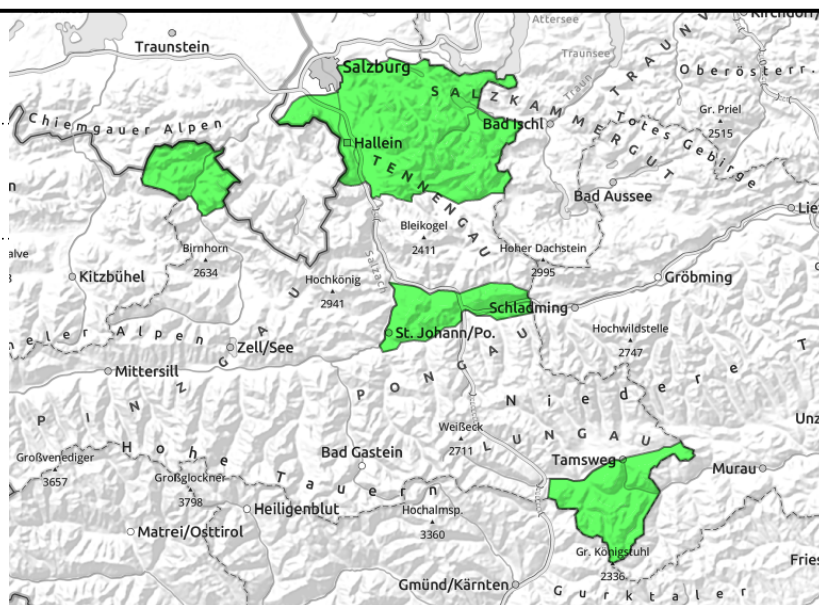
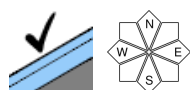


Expositions



10.04.2022

Osterhorngruppe, Gamsfeldgruppe,
Untersbergstock, Chiemgauer Alpen, Heutal,
Reiteralpe, Pongauer Grasberge, Nockberge



Not much snow

Avalanche danger is LOW. Only few danger zones in outlying terrain. The danger of falling outweighs that of being buried in snow masses.

Snowpack structure

Atop a moist old snowpack a few cm of fresh snow were deposited.

Weather

On Sunday, low lying and fog-like clouds will limit visibility, repeated snow and graupel showers, the NW winds will be strong. At 2000 m: -8 to -6 degrees.

On Monday, mostly sunshine. Little wind. Significantly higher temperatures. At 2000 m: 0-3 degrees.

Outlook

Little change. The slopes are rapidly becoming bare of snow.

Avalanche problems



Danger ratings

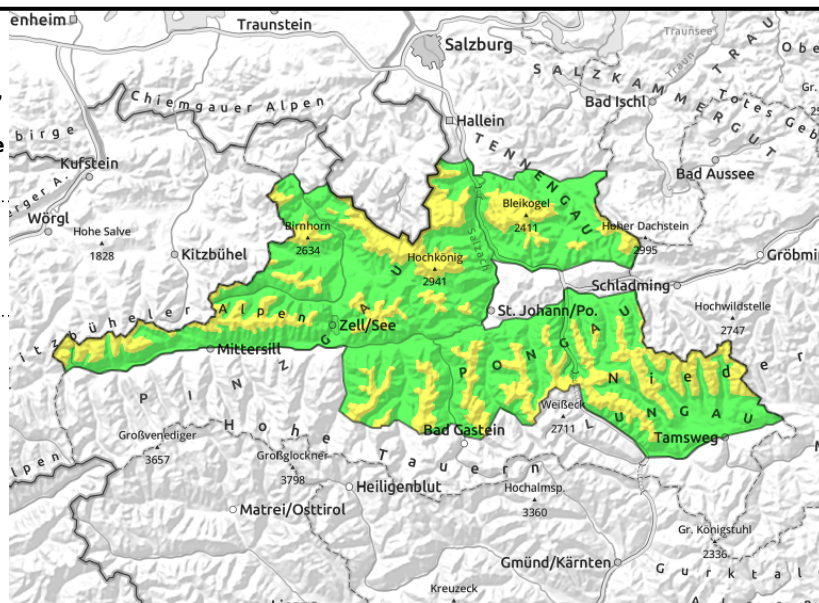
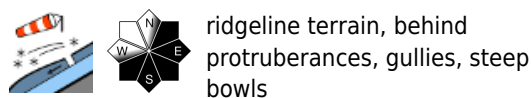


Expositions



10.04.2022

Tennengebirge, Gosaukamm, Steinernes Meer, Hochkönig, Hagengebirge, Göllstock, Loferer und Leoganger Steinberge, Kitzbüheler Alpen, Glemmtal, Oberpinzgauer Grasberge, Dientner Grasberge, Goldberggruppe Nord, Niedere Tauern Nord, Niedere Tauern Alpenhauptkamm, Niedere Tauern Süd



Do not underestimate snowdrifts in steep terrain!

Avalanche danger above 1800 m is MODERATE, below that altitude danger is LOW.

The fresh snowdrifts formed by fresh snow and strong NW winds are triggerable particularly by large additional loading. Frequency of danger zones and depth of the drifts increase with ascending altitude. Most danger zones are in extended southern aspects in ridgeline terrain and in wind-loaded gullies and bowls.

Naturally triggered glide-snow avalanches on extremely steep grassy slopes; and in sunny phases: loose-snow avalanches in rocky steep terrain.

Snowpack structure

Fresh snow and snowdrifts generally well bonded to the moist old snowpack surface.

Weather

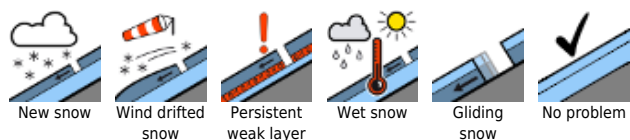
On Sunday, low lying and fog-like clouds will limit visibility, repeated snow and graupel showers, the NW winds will be strong. At 2000 m: -8 to -6 degrees.

On Monday, mostly sunshine. Little wind. Significantly higher temperatures. At 2000 m: 0-3 degrees.

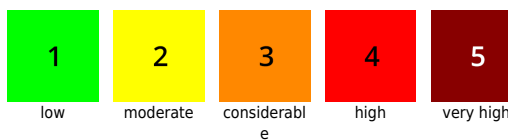
Outlook

At the beginning of the week the snowdrift problem will recede, but naturally triggered avalanche activity will increase during the daytime due to solar radiation and daytime warming.

Avalanche problems



Danger ratings





Expositions

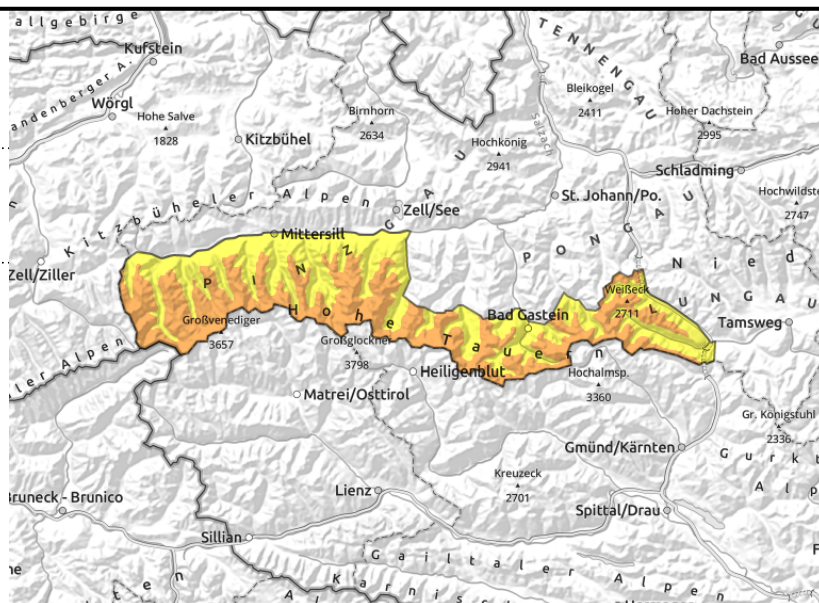


10.04.2022

Großvenedigergruppe Nord, Glocknergruppe Nord, Großvenedigergruppe Alpenhauptkamm, Glocknergruppe Alpenhauptkamm, Goldberggruppe Alpenhauptkamm, Ankogelgruppe, Muhr



  ridgeline terrain, behind protruberances, gullies, steep bowls



Fresh snowdrifts often easily triggered at high and high-alpine altitudes

Avalanche danger above 2400m is CONSIDERABLE, between 1800 and 2400 MODERATE, below that altitude LOW.

The fresh snowdrifts formed by fresh snow and strong northerly winds are triggerable particularly by large additional loading. Frequency of danger zones and depth of the drifts increase with ascending altitude. Most danger zones are in extended southern aspects in ridgeline terrain and in wind-loaded gullies and bowls. At high and high alpine altitudes the releases can grow to dangerously large size. Naturally triggered glide-snow avalanches on extremely steep grassy slopes; and in sunny phases: loose-snow avalanches in rocky steep terrain.

Snowpack structure

At high altitudes on the Main Alpine Ridge there was half-a-metre of fresh snow accompanied by strong northerly winds. Fresh snow and snowdrifts are not always well bonded. The old snow is moist up to over 2000 m.

Weather

On Sunday, low lying and fog-like clouds will limit visibility, repeated snow and graupel showers, the NW winds will be strong. At 2000 m: -8 to -6 degrees; at 3000 m, -19 degrees.

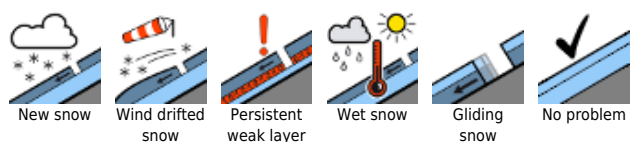
On Monday, mostly sunshine. Little wind. Significantly higher temperatures. At 2000 m: 0-3 degrees; at 3000 m, -2 degrees.

Outlook

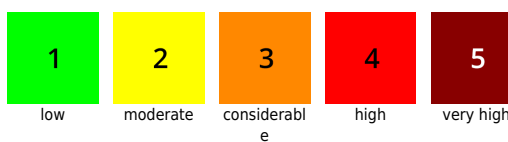
In the course of next week the snowdrift problem will recede, but naturally triggered avalanche activity will increase during the daytime due to solar radiation and daytime warming.

Translated by Jeffrey McCabe, www.creativtrans.com

Avalanche problems



Danger ratings



Expositions

