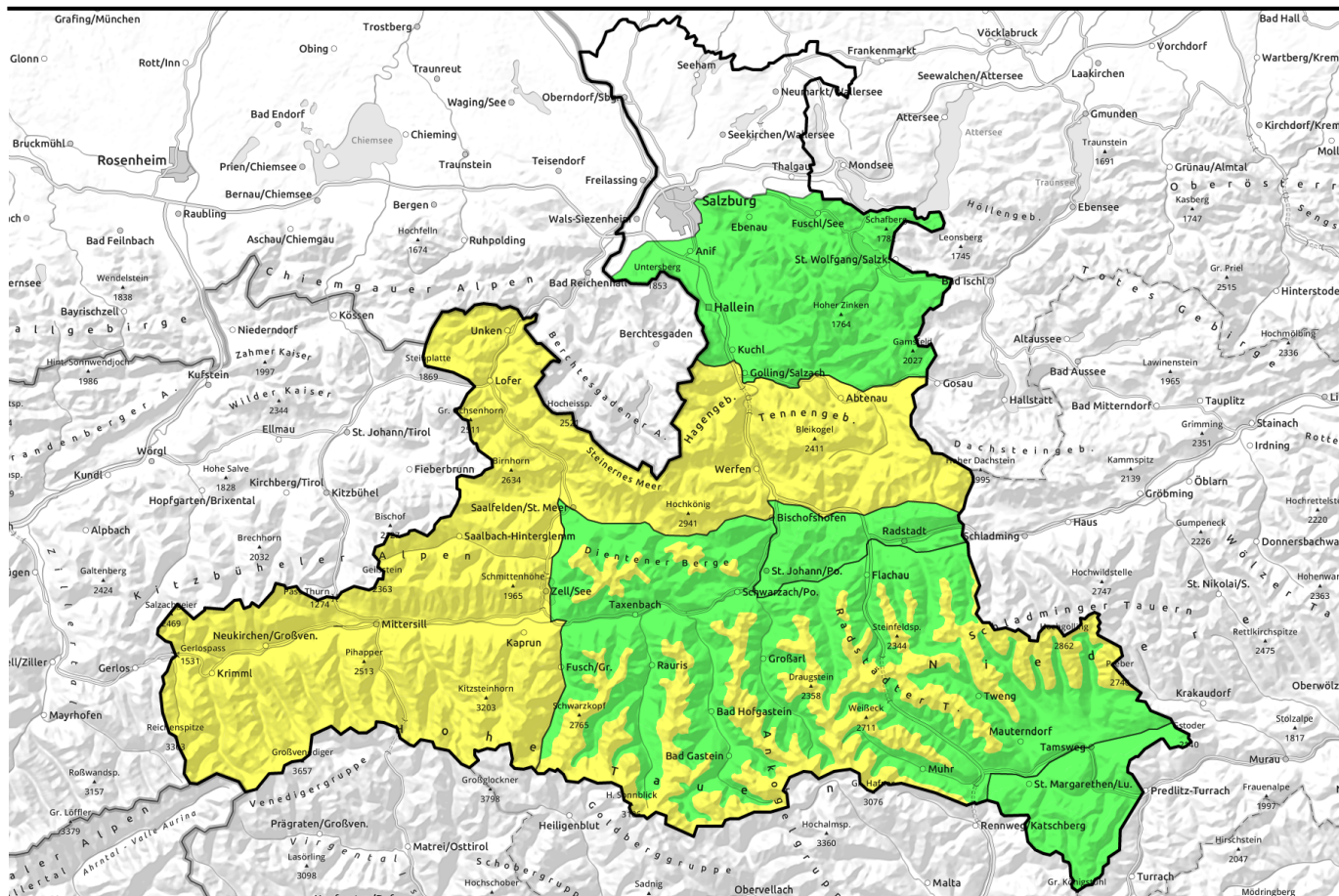


09.04.2022



Cold front, bringing plummeting temperatures, some fresh snow



Osterhorngruppe, Gamsfeldgruppe, Untersbergstock, Pongauer Grasberge, Nockberge



Chiemgauer Alpen, Heutal, Reiteralpe, Tennengebirge, Gosaukamm, Loferer und Leoganger Steinberge, Steinernes Meer, Hochkönig, Hagengebirge, Göllstock, Kitzbüheler Alpen, Glemmtal, Oberpinzgauer Grasberge, Großvenedigergruppe Nord, Großvenedigergruppe Alpenhauptkamm, Glocknergruppe Nord, Glocknergruppe Alpenhauptkamm

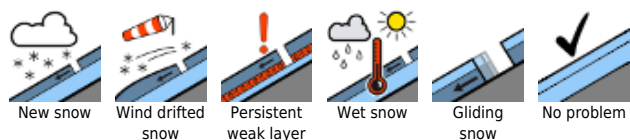


1800 m

Dientner Grasberge, Goldberggruppe Nord, Goldberggruppe Alpenhauptkamm, Niedere Tauern Alpenhauptkamm, Niedere Tauern Nord, Ankogelgruppe, Muhr, Niedere Tauern Süd



Avalanche problems



Danger ratings



Expositions

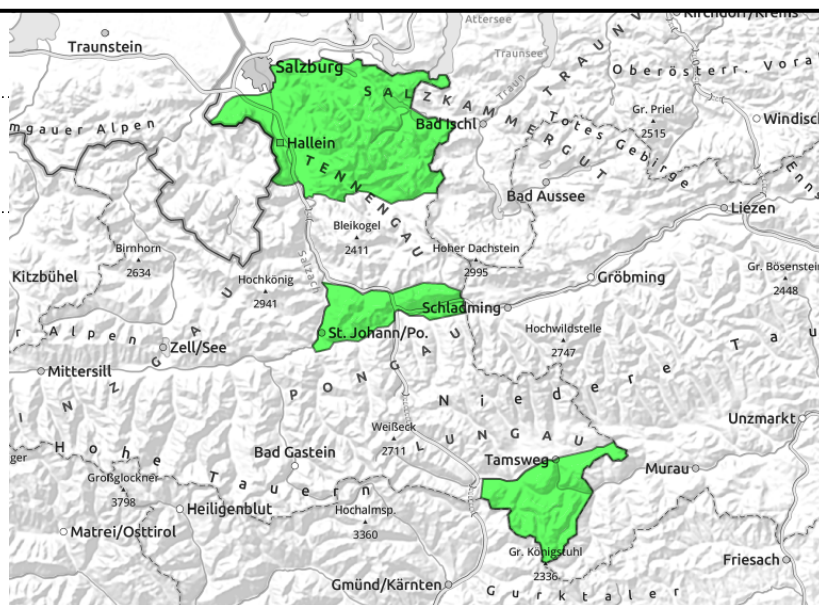


09.04.2022

**Osterhorngruppe, Gamsfeldgruppe,
Untersbergstock, Pongauer Grasberge, Nockberge**



little snow, few danger zones,
isolated wet loose-snow
releases



Few avalanche prone locations

Avalanche danger is LOW. Only few danger zones in outlying terrain. In very steep zones small, wet loose-snow avalanches can be triggered by the precipitation or additional loading.

Snowpack structure

On sunny slopes the fresh snow (5-15 cm) will frequently fall on bare slopes at intermediate altitudes. The shallow old snowpack has settled well, is thoroughly wet and, on shady slopes, nearly 0-degree isotherm, with only few reserves of cold from last night. The precipitation can in isolated cases lead to a loss of firmness.

Weather

On Saturday, starkly reduced visibility due to clouds, fog, rain and snow. In early morning a cold front will pass through from the northwest, bringing stormy winds (gusts up to 80 km/hr) and plummeting temperatures of 10 degrees in a short span of time. At 2000 m: from 0 to -7 degrees. Snowfall level will rapidly descend down to low lying areas.

On Sunday, low lying cloud cover will reduce visibility, light snowfall in Northern Alps and Tauern. Winds at high altitudes will be 50-70 km from W/NW. At 2000 m: -8 degrees.

Outlook

The lower temperatures will have immediate effect: wet loose-snow avalanches will recede.

Avalanche problems



New snow



Wind drifted
snow



Persistent
weak layer



Wet snow



Gliding
snow



No problem

Danger ratings



1

low



2

moderate



3

considerabl
e



4

high



5

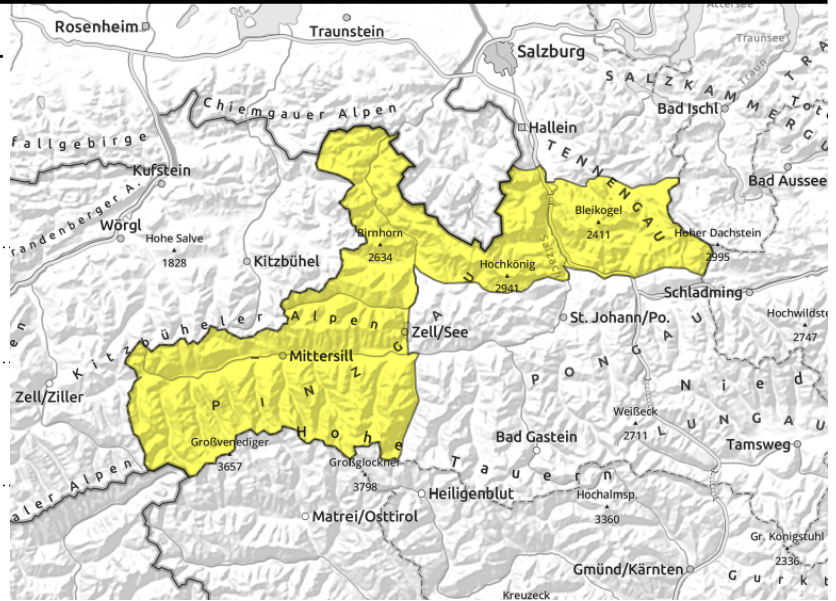
very high

Expositions



09.04.2022

Chiemgauer Alpen, Heutal, Reiteralpe, Tennengebirge, Gosaukamm, Loferer und Leoganger Steinberge, Steinernes Meer, Hochkönig, Hagengebirge, Göllstock, Kitzbüheler Alpen, Glemmtal, Oberpinzgauer Grasberge, Großvenedigergruppe Nord, Großvenedigergruppe Alpenhauptkamm, Glocknergruppe Nord, Glocknergruppe Alpenhauptkamm



in very steep terrain, esp. on shady slopes below 1500m



above 1500m in gullies, steep bowls, behind protruberances, trigger-sensitivity rises with ascending altitude

Down below: wet snow. Up above: snowdrift accumulations.

Avalanche danger is MODERATE. At low and intermediate altitudes the danger stems mostly from small (isolated medium-sized) wet loose-snow avalanches which trigger naturally or in very steep terrain, by winter sports enthusiasts. Danger from snowdrifts increases with ascending altitude in gullies and behind steep protruberances in NE/E/S aspects. The fresh drifts are prone to triggering. Poor visibility makes evaluation more difficult on-site.

Snowpack structure

The old snowpack is nearly 0-degree isotherm (except on shady high alpine slopes) and compact, the reserves of cold are few. Precipitation at high altitudes (15-25 cm) can lead to a loss of firmness in the early morning hours. At high altitudes there are older drifts, fresh drifts are being generated in E/S aspects. Bonding to the snowbase deteriorates with ascending altitude.

Weather

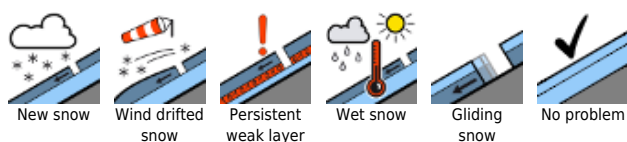
On Saturday, starkly reduced visibility due to clouds, fog, rain and snow. In early morning a cold front will pass through from the northwest, bringing stormy winds (gusts up to 80 km/hr) and plummeting temperatures of 10 degrees in a short span of time. At 2000 m: from 0 to -7 degrees; at 3000 m: from -6 to -15 degrees. Snowfall level will rapidly descend down to low lying areas.

On Sunday, low lying cloud cover will reduce visibility, light snowfall in Northern Alps and Tauern. Winds at high altitudes will be 50-70 cm from W/NW. At 2000 m: -8 degrees, at 3000 m: -15 degrees.

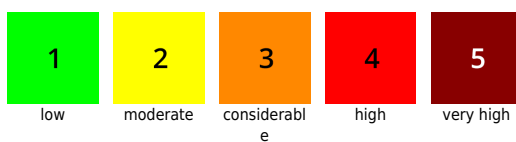
Outlook

Wet loose-snow avalanches will recede. At high altitudes, MODERATE danger of slab avalanches will persist.

Avalanche problems



Danger ratings

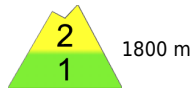




Expositions





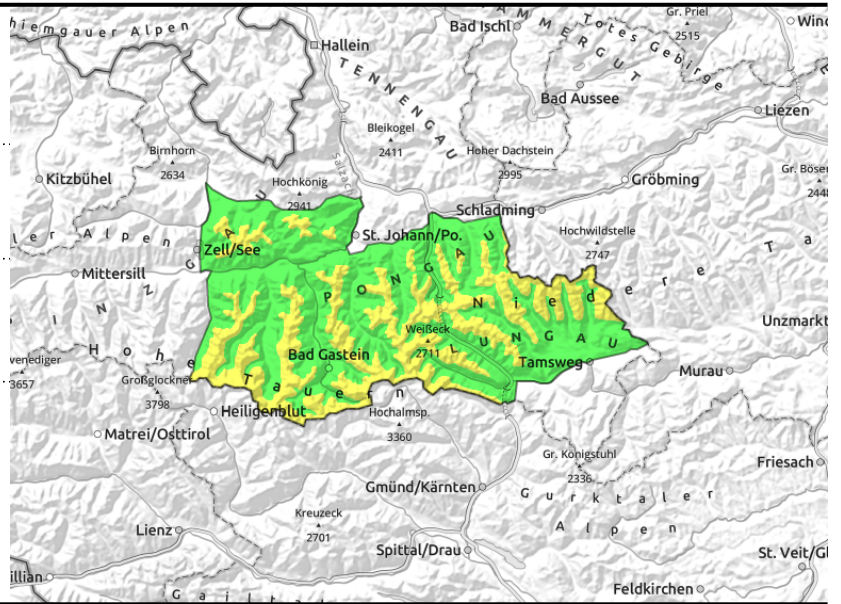
09.04.2022

**Dientner Grasberge, Goldberggruppe Nord,
Goldberggruppe Alpenhauptkamm, Niedere Tauern
Alpenhauptkamm, Niedere Tauern Nord,
Ankogelgruppe, Muhr, Niedere Tauern Süd**



  in very steep zones, esp. on shady slopes below 1500m

  above 1500m in gullies, steep bowls, behind protruberances, trigger-sensitivity increases with ascending altitude



Down below: wet snow. Up above: snowdrift accumulations.

Avalanche danger above 1800m is MODERATE. At low and intermediate altitudes the danger stems mostly from small (isolated medium-sized) wet loose-snow avalanches which trigger naturally or in very steep terrain, by winter sports enthusiasts. Danger from snowdrifts increases with ascending altitude in gullies and behind steep protruberances in NE/E/S aspects. The fresh drifts are prone to triggering. Poor visibility makes evaluation more difficult on-site.

Snowpack structure

The old snowpack is nearly 0-degree isotherm (except on shady high alpine slopes) and compact, the reserves of cold are few. Precipitation at high altitudes (15-25 cm) can lead to a loss of firmness in the early morning hours. At high altitudes there are older drifts, fresh drifts are being generated in E/S aspects. Bonding to the snowbase deteriorates with ascending altitude.

Weather

On Saturday, starkly reduced visibility due to clouds, fog, rain and snow. In early morning a cold front will pass through from the northwest, bringing stormy winds (gusts up to 80 km/hr) and plummeting temperatures of 10 degrees in a short span of time. At 2000 m: from 0 to -7 degrees; at 3000 m: from -6 to -15 degrees. Snowfall level will rapidly descend down to low lying areas.

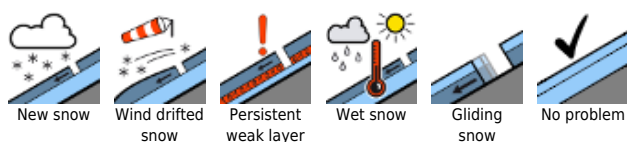
On Sunday, low lying cloud cover will reduce visibility, light snowfall in Northern Alps and Tauern. Winds at high altitudes will be 50-70 cm from W/NW. At 2000 m: -8 degrees, at 3000 m: -15 degrees.

Outlook

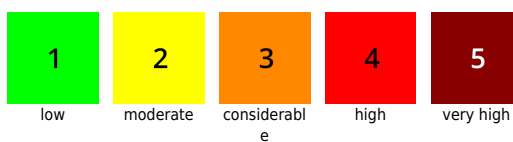
Wet loose-snow avalanches will recede. At high altitudes, MODERATE danger of slab avalanches will persist.

Translated by Jeffrey McCabe, www.creativtrans.com

Avalanche problems



Danger ratings



Expositions

