

Moderate wet-snow problem all day long below 2300/2500m. Some snowdrifts in high alpine regions.

	Chiemgauer Alpen, Heutal, Reiteralpe, Kitzbüheler Alpen, Glemmtal, Oberpinzgauer Grasberge, Dientner Grasberge, Niedere Tauern Nord, Goldberggruppe Nord	
	Großvenedigergruppe Alpenhauptkamm, Glocknergruppe Alpenhauptkamm, Goldberggruppe Alpenhauptkamm, Niedere Tauern Alpenhauptkamm, Ankogelgruppe, Muhr, Niedere Tauern Süd, Loferer und Leoganger Steinberge, Steinernes Meer, Hochkönig, Hagengebirge, Göllstock, Tennengebirge, Gosaukamm, Großvenedigergruppe Nord, Glocknergruppe Nord	
	Nockberge, Osterhorngruppe, Gamsfeldgruppe, Untersbergstock, Pongauer Grasberge	

Avalanche problems



Danger ratings

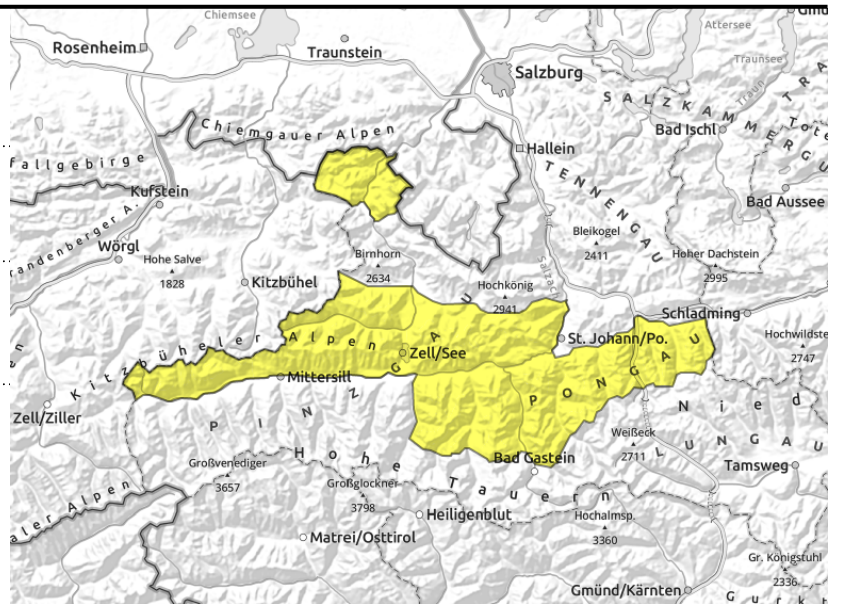


Expositions



08.04.2022

Chiemgauer Alpen, Heutal, Reiteralpe, Kitzbüheler Alpen, Glemmtal, Oberpinzgauer Grasberge, Dientner Grasberge, Niedere Tauern Nord, Goldberggruppe Nord



superficial loose-snow avalanches, mostly small



very isolated

Following overcast nighttime skies, moderate wet-snow problem from the start

Avalanche danger is MODERATE due to wet-snow problem.

Superficial loose-snow avalanches are possible, mostly small, mostly in very steep terrain. They can be triggered by skiers and boarders (slides, danger of being swept along) or on extremely steep rocky slopes can trigger naturally.

Very isolated glide-snow avalanches (small-to-medium) can release on very steep grassy slopes.

Snowpack structure

A compact, moist old snowpack dominates, mostly topped by softened layers. The uppermost 20-25 cm can soften during the day and become wet, depending on aspect and measure of exposure. Gliding snow horizon is often the layer of dust from the Sahara.

Weather

On Thursday night, overcast skies, not cold or windy. Slight precipitation is possible.

On Friday, clouds and residual cloud will inhibit visibility. Mostly dry. Possible intermittent rain showers during the day. Moderate to brisk winds, mostly from SW. At 2000 m: 4 degrees.

On Saturday, a weather change. Poor visibility, lots of fog, rain, snowfall. Snowfall level will descend significantly. In early morning, snowfall above 1800 m, in the evening above 800 m. Temperatures will drop. At 2000 m: from 0 to -7 degrees. The W/NW winds will be stormy (60-80 km/hr). Fresh snow by evening: 10-20 cm, depending on altitude.

Outlook

On Saturday, fresh fallen snow, snowdrifts generating, wet-snow situation.

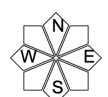
Avalanche problems



Danger ratings

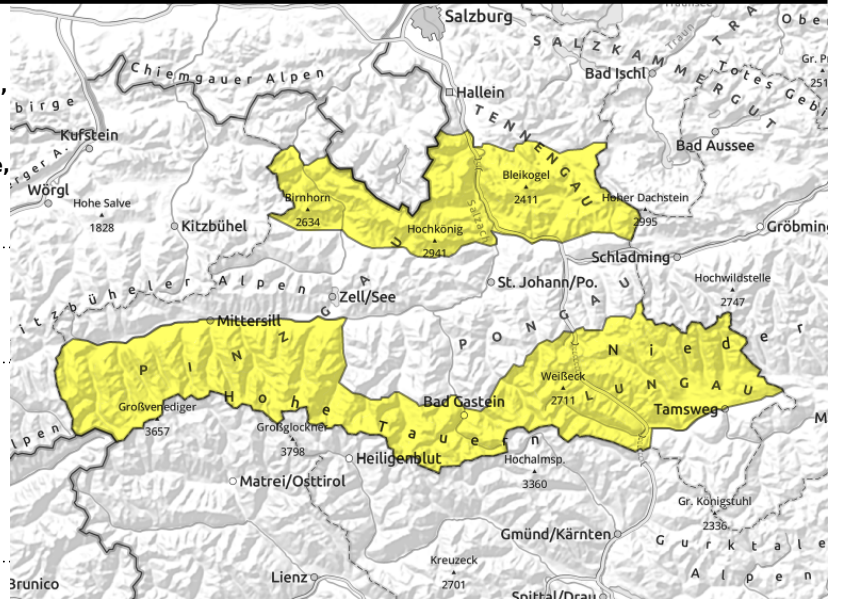


Expositions



08.04.2022

Großvenedigergruppe Alpenhauptkamm, Glocknergruppe Alpenhauptkamm, Goldberggruppe Alpenhauptkamm, Niedere Tauern Alpenhauptkamm, Ankogelgruppe, Muhr, Niedere Tauern Süd, Loferer und Leoganger Steinberge, Steinernes Meer, Hochkönig, Hagengebirge, Gölstock, Tennengebirge, Gosaukamm, Großvenedigergruppe Nord, Glocknergruppe Nord



naturally triggered avalanche activity, medium-sized avalanches, below 2300-2500m, isolated glide-snow avalanche seldom large



isolated dry-snow avalanche danger zones above 2600 m

Below 2300-2500 m: moderate wet-snow problem, above 2600 m heed snowdrifts

Avalanche danger is MODERATE. Above 2600 m there is a snowdrift problem, below 2300-2500 m a wet-snow problem.

Below 2300 m (in the morning) and below 2500 m (in the afternoon) moist and wet superficial loose-snow avalanches (small-to-medium, rarely large) can trigger naturally in extremely steep terrain, they can also be triggered by winter sports enthusiasts and the most recent layer of wet snow made to slide. Seldom glide-snow avalanches (small to rare large-sized releases) are possible on very steep grass-covered slopes.

At high and high alpine altitudes (above 2600m) there are hardened snowpack accumulations in steep ridgeline terrain atop soft layers which in isolated cases (N/E/S aspects) can be triggered. Potential slab avalanches are small-to-medium. The frequency of danger zones increases with ascending altitude.

Snowpack structure

A compact, moist old snowpack dominates, mostly topped by softened layers. The uppermost 20-25 cm can soften during the day and become wet, depending on aspect and measure of exposure. Gliding snow horizon is often the layer of dust from the Sahara.

Weather

On Thursday night, overcast skies, not cold or windy. Slight precipitation is possible.

On Friday, clouds and residual cloud will inhibit visibility. Mostly dry. Possible intermittent rain showers during the day. Moderate to brisk winds, mostly from SW. At 2000 m: 4 degrees.

On Saturday, a weather change. Poor visibility, lots of fog, rain, snowfall. Snowfall level will descend significantly. In early morning, snowfall above 1800 m, in the evening above 800 m. Temperatures will drop. At 2000 m: from 0 to -7 degrees. The W/NW winds will be stormy (60-80 km/hr). Fresh snow by evening: 10-20 cm, depending on altitude.

Avalanche problems



New snow



Wind drifted snow



Persistent weak layer



Wet snow



Gliding snow



No problem

Danger ratings



1

low



2

moderate



3

considerable



4

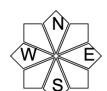
high



5

very high

Expositions

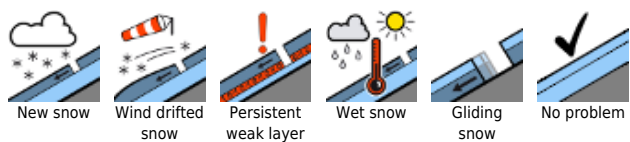


08.04.2022

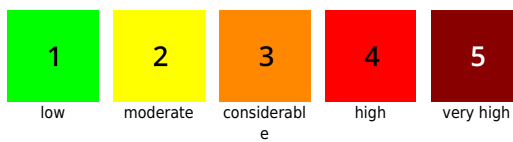
Outlook

On Saturday, fresh fallen snow, snowdrifts generating, wet-snow situation.

Avalanche problems



Danger ratings



Expositions

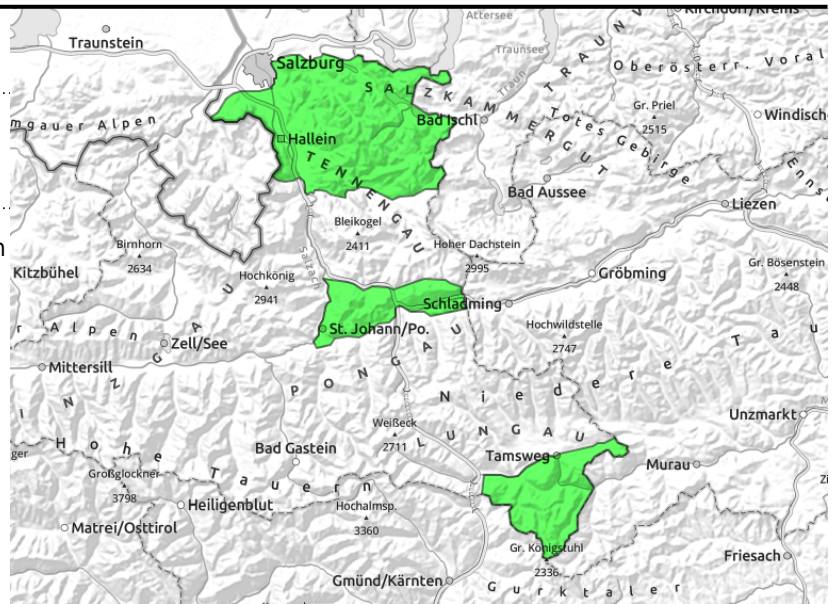


08.04.2022

Nockberge, Osterhorngruppe, Gamsfeldgruppe, Untersbergstock, Pongauer Grasberge



little snow, few danger zones in outlying terrain, small slides



Little snow, few avalanche prone locations, small wet-snow slides

Avalanche danger is LOW. Only few spots threaten danger. On steep slopes above 1500m, small wet-snow slides are possible.

Snowpack structure

The snowpack has settled well, in the morning it has a melt-freeze crust which softens in the sunshine at varying speeds. In general, not much snow on the ground.

Weather

On Thursday night, overcast skies, not cold or windy. Slight precipitation is possible.

On Friday, clouds and residual cloud will inhibit visibility. Mostly dry. Possible intermittent rain showers during the day. Moderate to brisk winds, mostly from SW. At 2000 m: 4 degrees.

On Saturday, a weather change. Poor visibility, lots of fog, rain, snowfall. Snowfall level will descend significantly. In early morning, snowfall above 1800 m, in the evening above 800 m. Temperatures will drop. At 2000 m: from 0 to -7 degrees. The W/NW winds will be stormy (60-80 km/hr). Fresh snow by evening: 10-20 cm, depending on altitude.

Outlook

On Saturday, fresh fallen snow, snowdrifts generating, wet-snow situation.

Translated by Jeffrey McCabe, www.creativtrans.com

Avalanche problems



New snow



Wind drifted snow



Persistent weak layer



Wet snow



Gliding snow



No problem

Danger ratings



1

low



2

moderate



3

considerable



4

high



5

very high

Expositions

