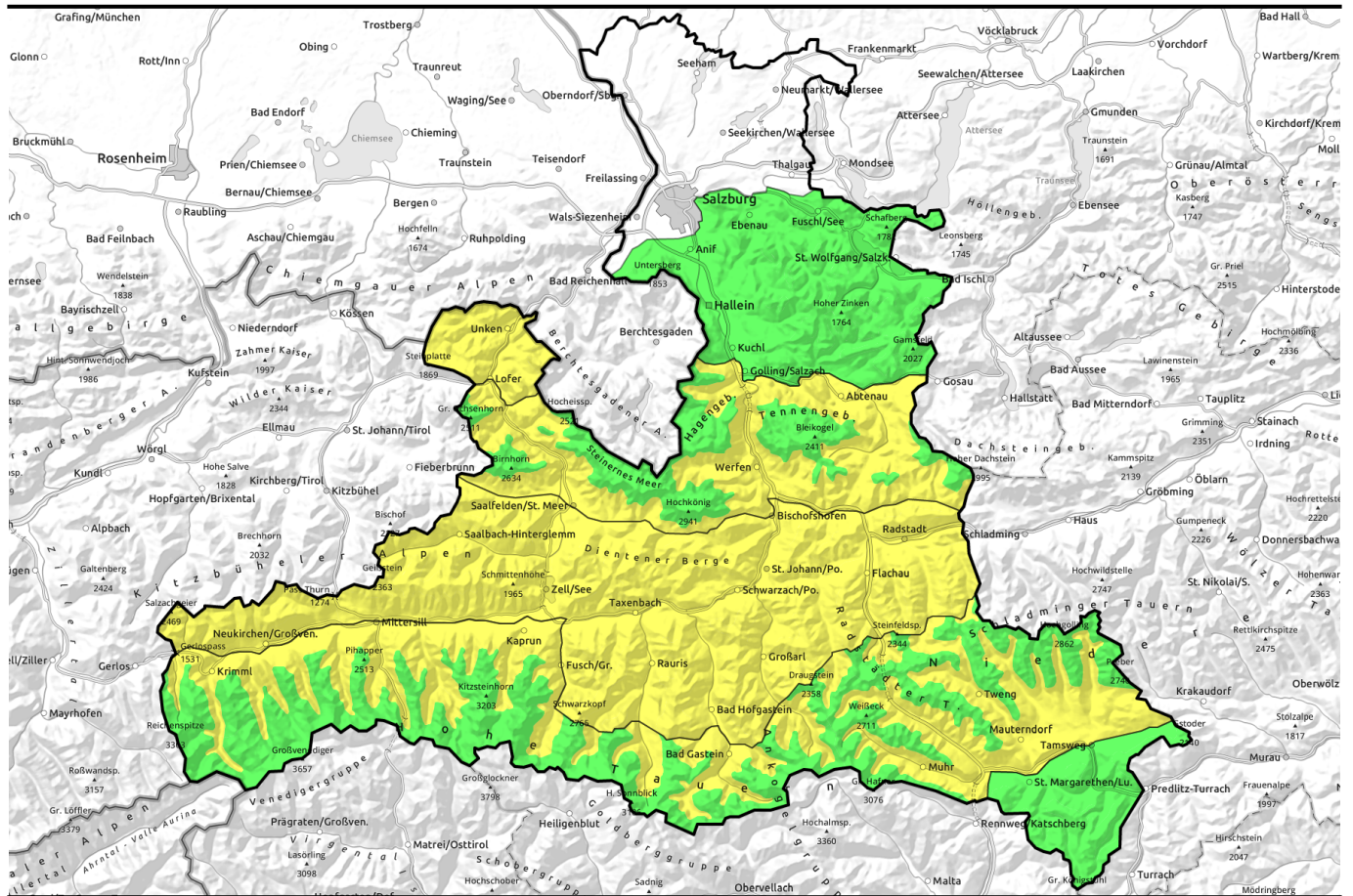


07.04.2022



Moderate wet-snow problem all day long below 2200/2500m. Mostly low danger in high alpine regions.

	<p>Chiemgauer Alpen, Heutal, Reiteralpe, Kitzbüheler Alpen, Glemmtal, Oberpinzgauer Grasberge, Pongauer Grasberge, Dientner Grasberge, Niedere Tauern Nord, Goldberggruppe Nord</p>	
	<p>2500 m Großvenedigergruppe Alpenhauptkamm, Glocknergruppe Alpenhauptkamm, Ankogelgruppe, Muhr, Niedere Tauern Süd, Loferer und Leoganger Steinberge, Steinernes Meer, Hochkönig, Hagengebirge, Göllstock, Tennengebirge, Gosaukamm, Großvenedigergruppe Nord, Glocknergruppe Nord</p>	
	<p>Nockberge, Osterhorngruppe, Gamsfeldgruppe, Untersbergstock</p>	

Avalanche problems



Danger ratings



Expositions



07.04.2022

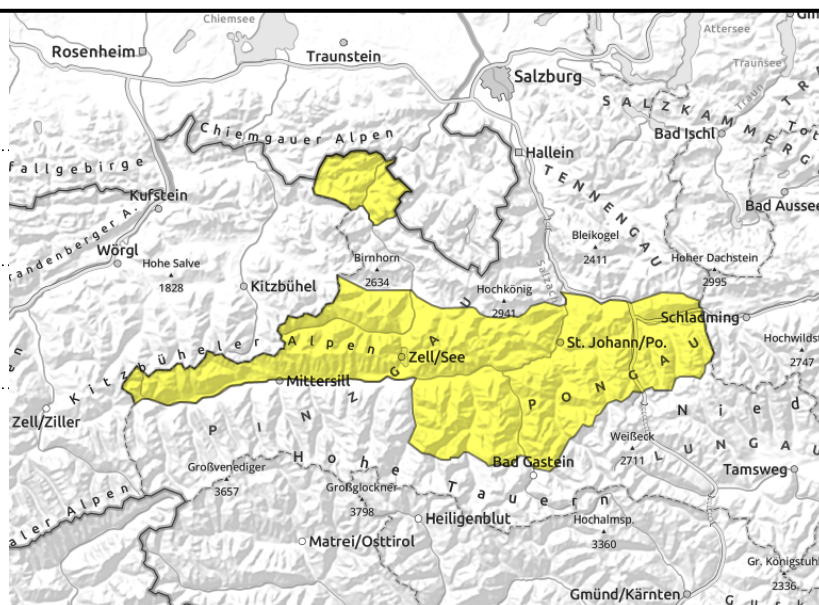
Chiemgauer Alpen, Heutal, Reiteralpe, Kitzbüheler Alpen, Glemmtal, Oberpinzgauer Grasberge, Pongauer Grasberge, Dientner Grasberge, Niedere Tauern Nord, Goldberggruppe Nord



superficial loose-snow avalanches, mostly small



very isolated



Following overcast nighttime skies, moderate wet-snow problem from the start

Avalanche danger is MODERATE due to wet-snow problem.

Superficial loose-snow avalanches are possible, mostly small, mostly in very steep terrain. They can be triggered by skiers and boarders (slides, danger of being swept along) or on extremely steep rocky slopes can trigger naturally.

Very isolated glide-snow avalanches (small-to-medium) can release on very steep grassy slopes.

Snowpack structure

A compact, moist old snowpack dominates, mostly topped by softened layers. The uppermost 20-25 cm can soften during the day and become wet, depending on aspect and measure of exposure.

Gliding snow horizon is often the layer of dust from the Sahara.

Weather

On Wednesday night, intermittent rainfall. Mild.

On Thursday it will quickly become sunny. In the afternoon, more cloud. In the evening, occasional rainfall from the north. Strong westerly winds. At 2000 m: 4 degrees.

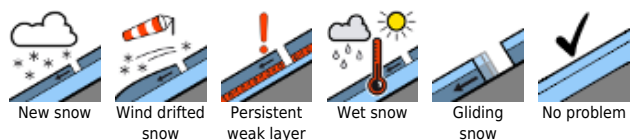
On Thursday night, partly clear, partly cloudy.

On Friday, clouds and residual cloud will inhibit visibility. Mostly dry. Possible intermittent rain showers during the day. Moderate to brisk winds, mostly from SW. Unchanged temperatures.

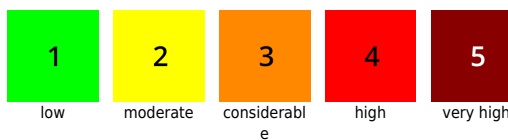
Outlook

Small wet-snow problem. Mostly MODERATE danger (glide-snow and loose-snow).

Avalanche problems



Danger ratings

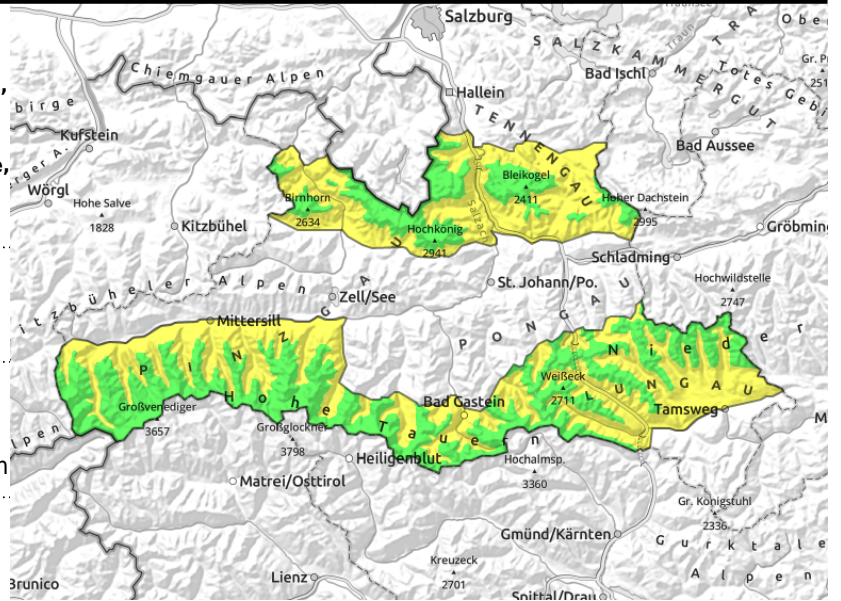


Expositions



07.04.2022

Großvenedigergruppe Alpenhauptkamm,
Glocknergruppe Alpenhauptkamm, Goldberggruppe
Alpenhauptkamm, Niedere Tauern Alpenhauptkamm,
Ankogelgruppe, Muhr, Niedere Tauern Süd, Loferer
und Leoganger Steinberge, Steinernes Meer,
Hochkönig, Hagengebirge, Gölstock, Tennengebirge,
Gosaukamm, Großvenedigergruppe Nord,
Glocknergruppe Nord



naturally triggered avalanche activity, medium-sized avalanches, below 2200-2500m

isolated glide-snow avalanches (seldom large-sized)

Below 2200-2500 m: moderate wet-snow problem, above that altitude low danger

Avalanche danger above 2500m is LOW below 2200-2500 m in the morning danger is moderate due to wet-snow problem.

Due to warmth and solar radiation, moist and wet superficial loose-snow avalanches (small-to-medium) can trigger naturally in extremely steep terrain (usually from the weak layer), also be triggered by skiers and boarders. Also seldom glide-snow avalanches are possible on grass-covered slopes.

At high and high-alpine altitudes (above 2600m) there are hard snowdrift masses in steep ridgeline terrain atop soft layers, these can be triggered in isolated cases on NE/E/S/SW slopes. LOW danger. Potential slabs are small-to-medium. The frequency of danger zones increases with ascending altitude.

Snowpack structure

A compact and moist old snowpack dominates. The uppermost layers are soft right from the start of the day. Layer, depending on aspect, the uppermost 20-25 cm are soft and perhaps wet. Gliding snow horizon is often the layer of dust from the Sahara.

In high alpine regions above 2400 m there are chiseled and compact melt-freeze crusts. Old snowdrift masses are evident above 2400 m. They lie atop soft layers but are not easily triggered.

Weather

On Wednesday night, intermittent rainfall. Mild.

On Thursday it will quickly become sunny. In the afternoon, more cloud. In the evening, occasional rainfall from the north. Strong westerly winds. At 2000 m: 4 degrees.

On Thursday night, partly clear, partly cloudy.

On Friday, clouds and residual cloud will inhibit visibility. Mostly dry. Possible intermittent rain showers during the day. Moderate to brisk winds, mostly from SW. Unchanged temperatures.

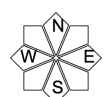
Avalanche problems



Danger ratings



Expositions

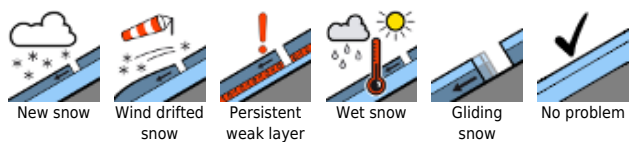


07.04.2022

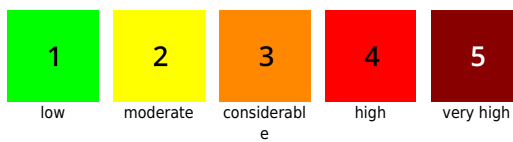
Outlook

Moderate wet-snow problem below 2400 m.

Avalanche problems



Danger ratings



Expositions

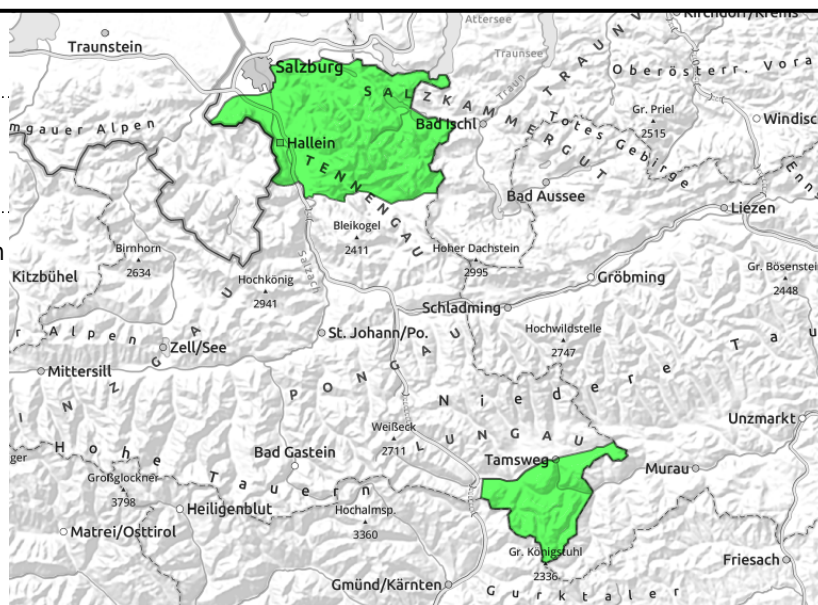


07.04.2022

Nockberge, Osterhorngruppe, Gamsfeldgruppe, Untersbergstock



little snow, few danger zones in outlying terrain, small slides



Little snow, few avalanche prone locations, small wet-snow slides

Avalanche danger is LOW. Only few spots threaten danger. On steep slopes above 1500m, small wet-snow slides are possible.

Snowpack structure

The snowpack has settled well. In general, not much snow on the ground. On sunny slopes and at intermediate altitudes, often bare ground.

Weather

On Wednesday night, intermittent rainfall. Mild.

On Thursday it will quickly become sunny. In the afternoon, more cloud. In the evening, occasional rainfall from the north. Strong westerly winds. At 2000 m: 4 degrees.

On Thursday night, partly clear, partly cloudy.

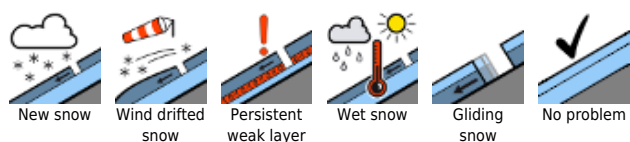
On Friday, clouds and residual cloud will inhibit visibility. Mostly dry. Possible intermittent rain showers during the day. Moderate to brisk winds, mostly from SW. Unchanged temperatures.

Outlook

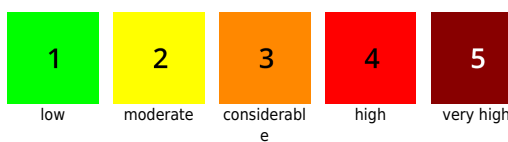
Little change is expected.

Translated by Jeffrey McCabe, www.creativtrans.com

Avalanche problems



Danger ratings



Expositions

