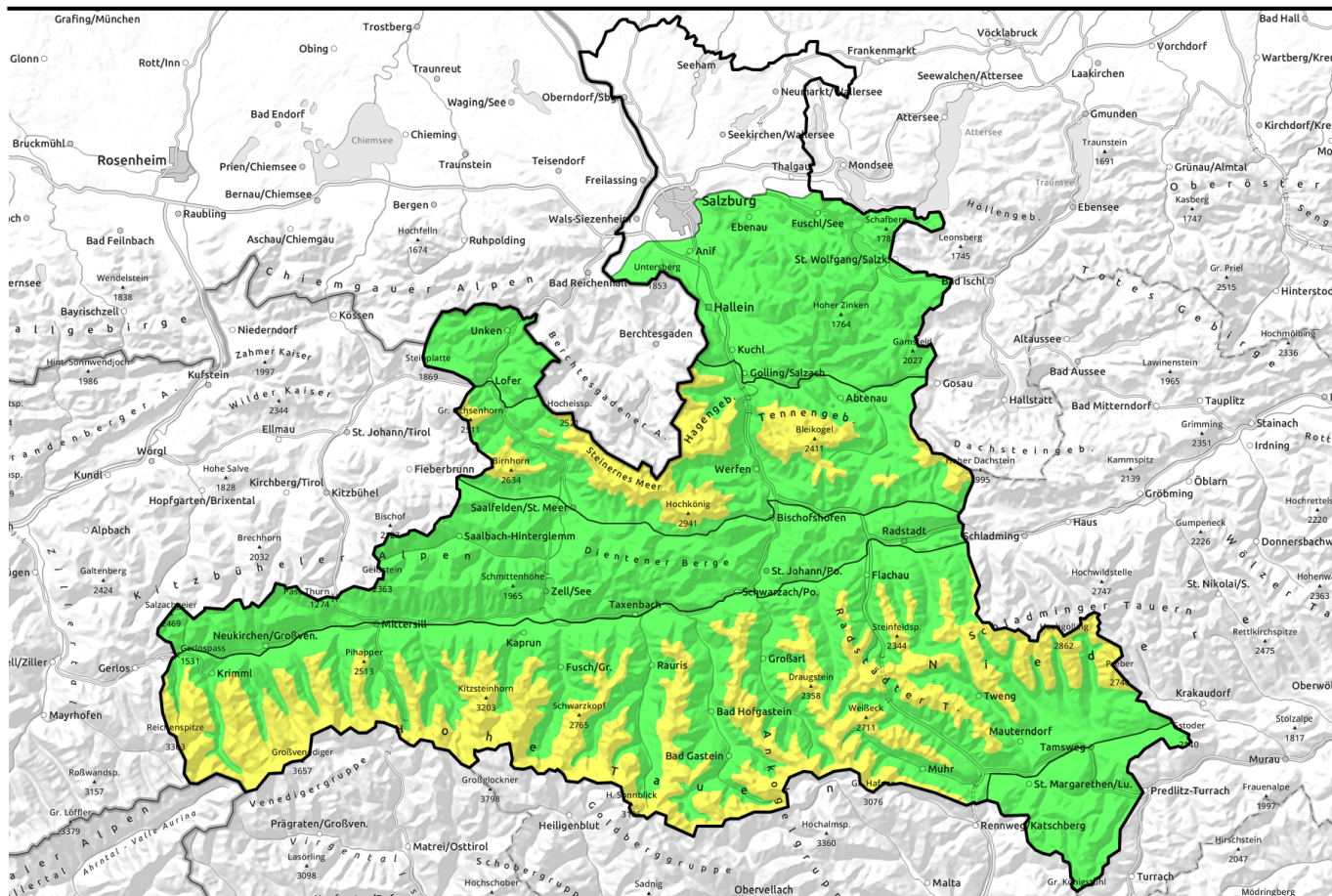


06.04.2022, morning



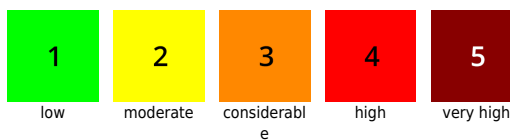
Increasing wet-snow problem during the day (low-to-moderate). Heed hard snowdrifts in high alpine regions.

| | | |
|--|--|--|
| | <p>Chiemgauer Alpen, Heutal, Reiteralpe, Untersbergstock, Kitzbüheler Alpen, Glemmtal, Oberpinzgauer Grasberge, Pongauer Grasberge, Osterhorngruppe, Gamsfeldgruppe, Dientner Grasberge</p> | |
| | <p>2200 m Glocknergruppe Nord, Großvenedigergruppe Nord, Großvenedigergruppe Alpenhauptkamm, Glocknergruppe Alpenhauptkamm, Goldberggruppe Alpenhauptkamm, Niedere Tauern Alpenhauptkamm, Ankogelgruppe, Muhr, Niedere Tauern Süd, Goldberggruppe Nord, Niedere Tauern Nord, Loferer und Leoganger Steinberge, Steinernes Meer, Hochkönig, Hagengebirge, Göllstock, Tennengebirge, Gosaukamm</p> | |
| | <p>Nockberge</p> | |

Avalanche problems



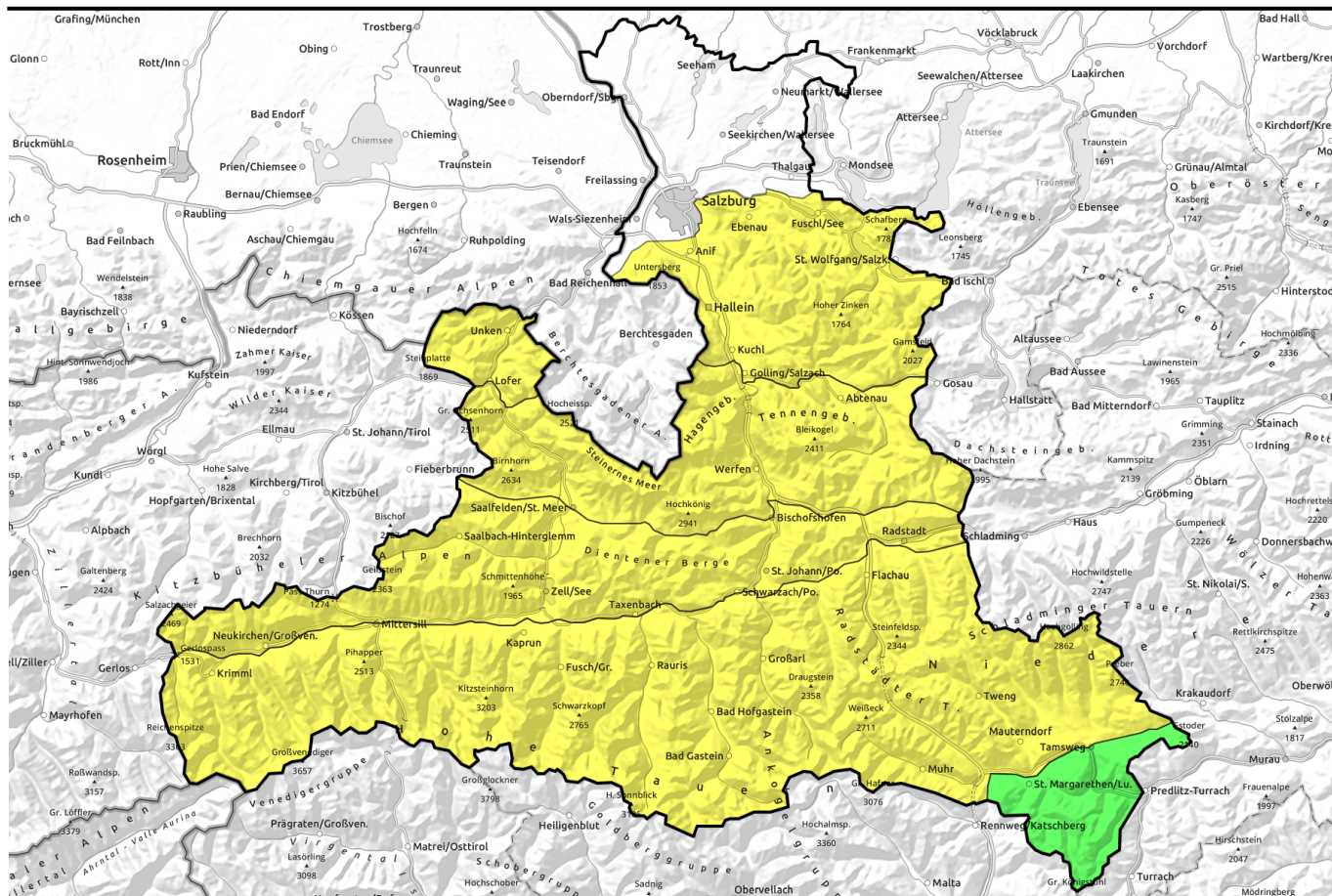
Danger ratings



Expositions



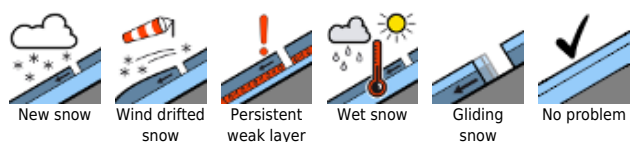
06.04.2022, afternoon



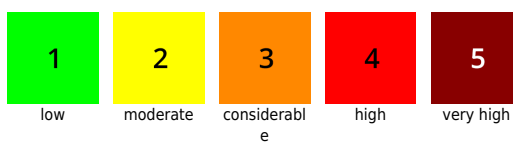
Tagesgang durch ansteigendes Nassschneeproblem (gering auf mäßig), im Hochgebirge harte Tribschneepakete beachten

| | | | |
|--|--|--|--|
| | Chiemgauer Alpen, Heutal, Reiteralpe, Untersbergstock, Kitzbüheler Alpen, Glemmtal, Oberpinzgauer Grasberge, Pongauer Grasberge, Osterhorngruppe, Gamsfeldgruppe, Dientner Grasberge | | |
| | Glocknergruppe Nord, Großvenedigergruppe Nord, Großvenedigergruppe Alpenhauptkamm, Glocknergruppe Alpenhauptkamm, Goldberggruppe Alpenhauptkamm, Niedere Tauern Alpenhauptkamm, Ankogelgruppe, Muhr, Niedere Tauern Süd, Goldberggruppe Nord, Niedere Tauern Nord, Loferer und Leoganger Steinberge, Steinernes Meer, Hochkönig, Hagengebirge, Göllstock, Tennengebirge, Gosaukamm | | |
| | Nockberge | | |

Avalanche problems



Danger ratings



Expositions



06.04.2022, morning

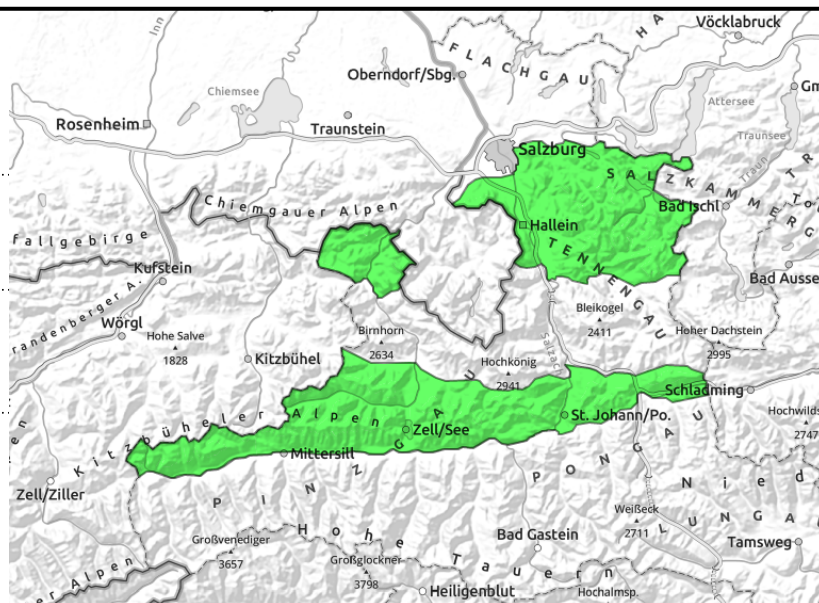
Chiemgauer Alpen, Heutal, Reiteralpe, Untersbergstock, Kitzbüheler Alpen, Glemmtal, Oberpinzgauer Grasberge, Pongauer Grasberge, Osterhorngruppe, Gamsfeldgruppe, Dientner Grasberge



superficial loose-snow avalanches, mostly small



very isolated



Melt-freeze crusts initially dominate. Moderate wet-snow problem follows during daytime.

Avalanche danger in the morning is LOW, rises in afternoon to MODERATE due to warmth and solar radiation.

Superficial loose-snow avalanches are possible, mostly small, mostly in very steep terrain. They can be triggered by skiers and boarders (slides, danger of being swept along) or on extremely steep rocky slopes can trigger naturally.

Very isolated glide-snow avalanches (small-to-medium) can release on very steep grassy slopes.

Snowpack structure

Atop a compact, moist old snowpack, mostly topped by a melt-freeze crust which quickly softens in the sun. Above the treeline, winds on Tuesday formed compactly chiseled melt-freeze crust. Near ridges there are isolated small/shallow snowdrift masses atop soft snow. Elsewhere, bonding of fresh snow to old snow is good.

Weather

On Wednesday, favorable mountain weather, lots of sun, good visibility. Initially only thin high-altitude clouds above summit level. Later in the day, large convective cloud build-up is anticipated, later on isolated rain showers. Moderate southerly winds. Warmer. At 2000 m: 5 degrees.

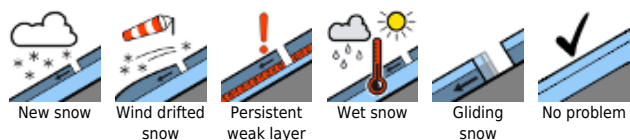
On Wednesday night, cloudy and mild. Light rainfall is possible.

On Thursday, some sunshine at the start, acceptable visibility. Soon the cloud cover will become dense, the visibility deteriorate, orientation become difficult. Towards evening, precipitation will set in from the west (snowfall level at 2000m). Strong westerly winds. At 2000 m: 2 degrees.

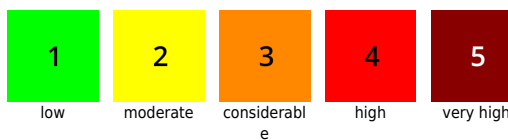
Outlook

Small wet-snow problem. Mostly MODERATE danger (glide-snow and loose-snow).

Avalanche problems



Danger ratings



Expositions



06.04.2022, afternoon

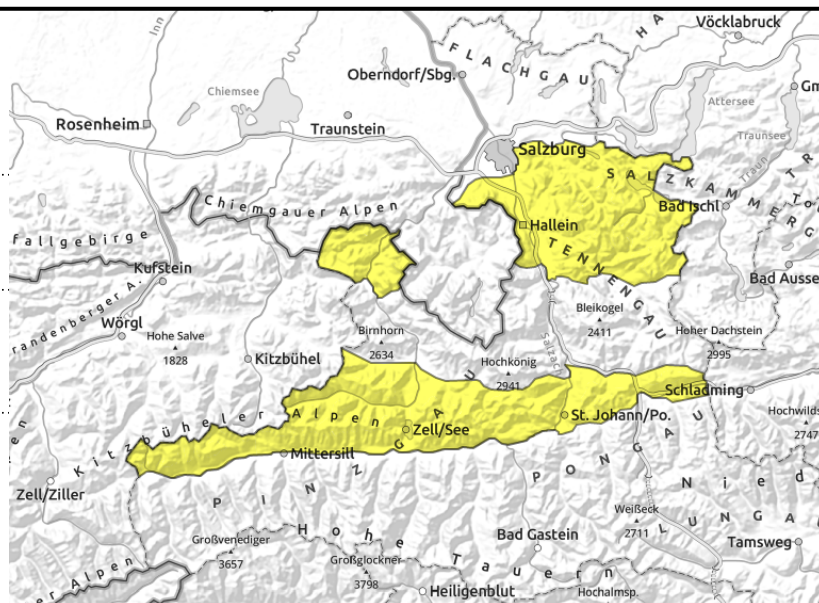
Chiemgauer Alpen, Heutal, Reiteralpe, Untersbergstock, Kitzbüheler Alpen, Glemmtal, Oberpinzgauer Grasberge, Pongauer Grasberge, Osterhorngruppe, Gamsfeldgruppe, Dientner Grasberge



superficial loose-snow avalanches, mostly small



very isolated



Melt-freeze crusts initially dominate. Moderate wet-snow problem follows during daytime.

Avalanche danger in the morning is LOW, rises in afternoon to MODERATE due to warmth and solar radiation.

Superficial loose-snow avalanches are possible, mostly small, mostly in very steep terrain. They can be triggered by skiers and boarders (slides, danger of being swept along) or on extremely steep rocky slopes can trigger naturally.

Very isolated glide-snow avalanches (small-to-medium) can release on very steep grassy slopes.

Snowpack structure

Atop a compact, moist old snowpack, mostly topped by a melt-freeze crust which quickly softens in the sun. Above the treeline, winds on Tuesday formed compactly chiseled melt-freeze crust. Near ridges there are isolated small/shallow snowdrift masses atop soft snow. Elsewhere, bonding of fresh snow to old snow is good.

Weather

On Wednesday, favorable mountain weather, lots of sun, good visibility. Initially only thin high-altitude clouds above summit level. Later in the day, large convective cloud build-up is anticipated, later on isolated rain showers. Moderate southerly winds. Warmer. At 2000 m: 5 degrees.

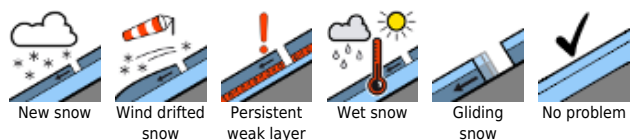
On Wednesday night, cloudy and mild. Light rainfall is possible.

On Thursday, some sunshine at the start, acceptable visibility. Soon the cloud cover will become dense, the visibility deteriorate, orientation become difficult. Towards evening, precipitation will set in from the west (snowfall level at 2000m). Strong westerly winds. At 2000 m: 2 degrees.

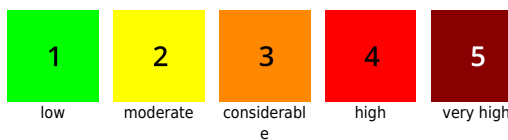
Outlook

Small wet-snow problem. Mostly MODERATE danger (glide-snow and loose-snow).

Avalanche problems



Danger ratings

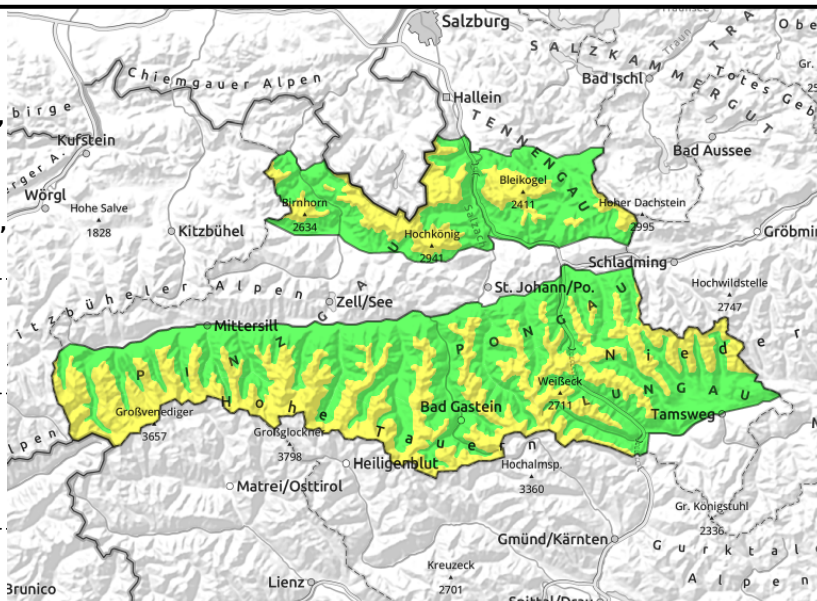


Expositions



06.04.2022, morning

Glocknergruppe Nord, Großvenedigergruppe Nord, Großvenedigergruppe Alpenhauptkamm, Glocknergruppe Alpenhauptkamm, Goldberggruppe Alpenhauptkamm, Niedere Tauern Alpenhauptkamm, Ankogelgruppe, Muhr, Niedere Tauern Süd, Ankogelgruppe Nord, Niedere Tauern Nord, Loferer und Leoganger Steinberge, Steinernes Meer, Hochkönig, Hagengebirge, Göllstock, Tennengebirge, Gosaukamm



ridgeline snowdrift masses in extremely steep terrain above 2200/2400m



naturally triggered avalanche activity, medium-sized avalanches, below 2400m: isolated glide-snow avalanches (can become large)

Up above: snowdrifts. Below 2400m: wet-snow problem starting at midday.

Avalanche danger in the morning is LOW below 2200 m, above that altitude danger is moderate due to recent snowdrifts. In the afternoon, MODERATE everywhere due to warmth.

At high and high alpine altitudes (above 2200-2400m) there are hard snowdrifts in steep ridgeline terrain atop soft layers which in isolated cases are triggerable by large additional loading (NE/E/S/W aspects). Potential slabs are small-to-medium. The drifts are easy to recognize. Frequency of danger zones increases with ascending altitude.

As warmth increases with the day unfolding, moist and wet superficial loose-snow avalanches (small-to-medium, occasionally large) can trigger naturally on extremely steep slopes. Also winter sports enthusiasts can trigger the recent layer of fresh snow or make it start to slide.

Isolated glide-snow avalanches (small-to-medium) are possible on very steep grassy slopes.

Snowpack structure

The compact and moist old snowpack has a melt-freeze crust which softens in the sunshine at varying speeds. Above the treeline, winds on Tuesday formed compactly chiseled melt-freeze crust. Near ridges there are isolated small/shallow snowdrift masses atop soft snow. Elsewhere, bonding of fresh snow to old snow is good.

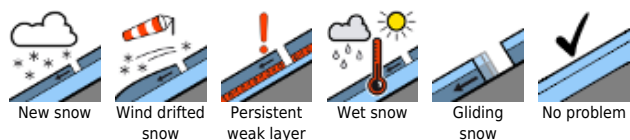
Weather

On Wednesday, favorable mountain weather, lots of sun, good visibility. Initially only thin high-altitude clouds above summit level. Later in the day, large convective cloud build-up is anticipated, later on isolated rain showers. Moderate southerly winds. Warmer. At 2000 m: 5 degrees.

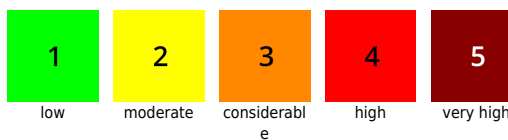
On Wednesday night, cloudy and mild. Light rainfall is possible.

On Thursday, some sunshine at the start, acceptable visibility. Soon the cloud cover will become dense, the visibility deteriorate, orientation become difficult. Towards evening, precipitation will set in

Avalanche problems



Danger ratings



Expositions



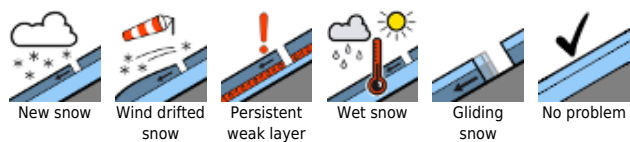
06.04.2022, morning

from the west (snowfall level at 2000m). Strong westerly winds. At 2000 m: 2 degrees.

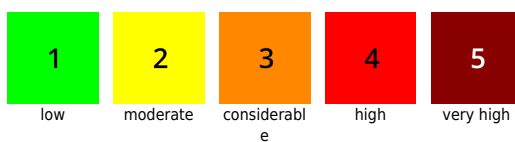
Outlook

Moderate wet-snow problem.

Avalanche problems



Danger ratings

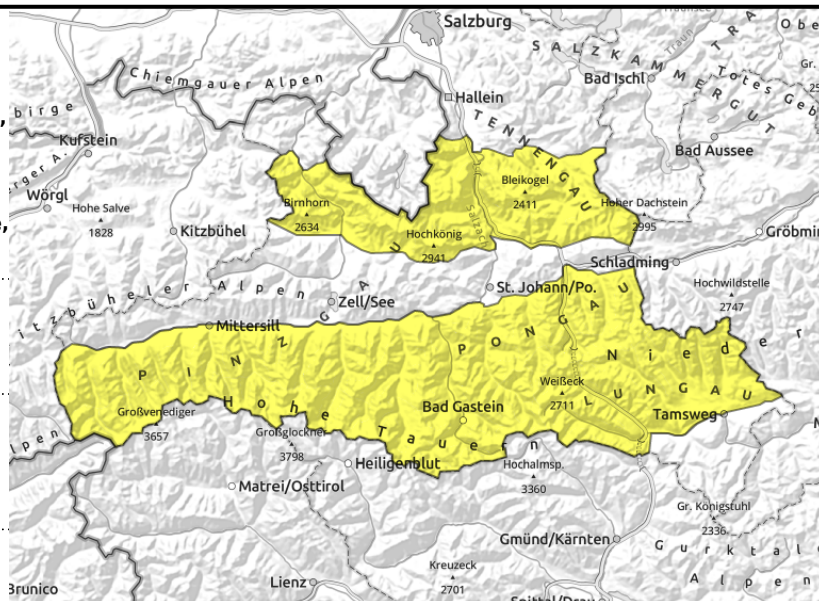


Expositions



06.04.2022, afternoon

Glocknergruppe Nord, Großvenedigergruppe Nord, Großvenedigergruppe Alpenhauptkamm, Glocknergruppe Alpenhauptkamm, Goldberggruppe Alpenhauptkamm, Niedere Tauern Alpenhauptkamm, Ankogelgruppe, Muhr, Niedere Tauern Süd, Ankogelgruppe, Muhr, Niedere Tauern Süd, Loferer und Leoganger Steinberge, Steinernes Meer, Hochkönig, Hagengebirge, Göllstock, Tennengebirge, Gosaukamm



ridgeline snowdrift masses in extremely steep terrain above 2200/2400m



naturally triggered avalanche activity, medium-sized avalanches, below 2400m: isolated glide-snow avalanches (can become large)

Up above: snowdrifts. Below 2400m: wet-snow problem starting at midday.

Avalanche danger in the morning is LOW below 2200 m, above that altitude danger is moderate due to recent snowdrifts. In the afternoon, MODERATE everywhere due to warmth.

At high and high alpine altitudes (above 2200-2400m) there are hard snowdrifts in steep ridgeline terrain atop soft layers which in isolated cases are triggerable by large additional loading (NE/E/S/W aspects). Potential slabs are small-to-medium. The drifts are easy to recognize. Frequency of danger zones increases with ascending altitude.

As warmth increases with the day unfolding, moist and wet superficial loose-snow avalanches (small-to-medium, occasionally large) can trigger naturally on extremely steep slopes. Also winter sports enthusiasts can trigger the recent layer of fresh snow or make it start to slide.

Isolated glide-snow avalanches (small-to-medium) are possible on very steep grassy slopes.

Snowpack structure

The compact and moist old snowpack has a melt-freeze crust which softens in the sunshine at varying speeds. Above the treeline, winds on Tuesday formed compactly chiseled melt-freeze crust. Near ridges there are isolated small/shallow snowdrift masses atop soft snow. Elsewhere, bonding of fresh snow to old snow is good.

Weather

On Wednesday, favorable mountain weather, lots of sun, good visibility. Initially only thin high-altitude clouds above summit level. Later in the day, large convective cloud build-up is anticipated, later on isolated rain showers. Moderate southerly winds. Warmer. At 2000 m: 5 degrees.

On Wednesday night, cloudy and mild. Light rainfall is possible.

On Thursday, some sunshine at the start, acceptable visibility. Soon the cloud cover will become dense, the visibility deteriorate, orientation become difficult. Towards evening, precipitation will set in

Avalanche problems



New snow



Wind drifted snow



Persistent weak layer



Wet snow



Gliding snow



No problem

Danger ratings



1

low



2

moderate



3

considerable



4

high



5

very high

Expositions



06.04.2022, afternoon

from the west (snowfall level at 2000m). Strong westerly winds. At 2000 m: 2 degrees.

Outlook

Moderate wet-snow problem.

Avalanche problems



New snow



Wind drifted
snow



Persistent
weak layer



Wet snow



Gliding
snow



No problem

Danger ratings



1

low



2

moderate



3

considerabl
e



4

high



5

very high

Expositions

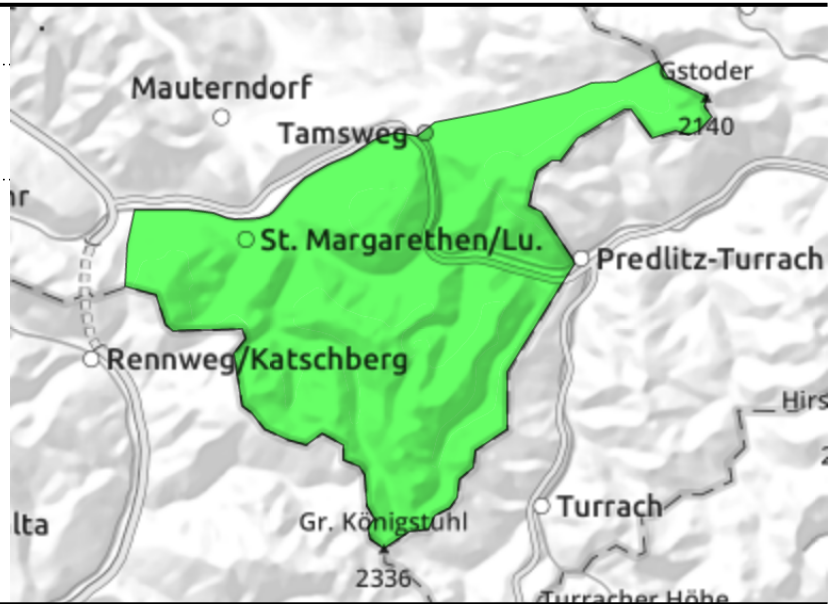


06.04.2022

Nockberge



very few danger zones in outlying terrain



Only few avalanche prone locations

Avalanche danger is LOW. Only few spots threaten danger.

Snowpack structure

The snowpack has settled well, in the morning it has a melt-freeze crust which softens in the sunshine at varying speeds. In general, not much snow on the ground.

Weather

On Wednesday, favorable mountain weather, lots of sun, good visibility. Initially only thin high-altitude clouds above summit level. Later in the day, large convective cloud build-up is anticipated, later on isolated rain showers. Moderate southerly winds. Warmer. At 2000 m: 5 degrees.

On Wednesday night, cloudy and mild. Light rainfall is possible.

On Thursday, some sunshine at the start, acceptable visibility. Soon the cloud cover will become dense, the visibility deteriorate, orientation become difficult. Towards evening, precipitation will set in from the west (snowfall level at 2000m). Strong westerly winds. At 2000 m: 2 degrees.

Outlook

Little change is expected.

Translated by Jeffrey McCabe, www.creativtrans.com

Avalanche problems



Danger ratings



Expositions

