

Moist loose-snow avalanches, snowdrifts in high alpine regions, poor visibility and winds at high altitude

	<p>2200 m Loferer und Leoganger Steinberge, Steinernes Meer, Hochkönig, Hagengebirge, Göllstock, Tennengebirge, Gosaukamm</p>	
	<p>Chiemgauer Alpen, Heutal, Reiteralpe, Untersbergstock, Kitzbüheler Alpen, Glemmtal, Oberpinzgauer Grasberge, Pongauer Grasberge, Osterhorngruppe, Gamsfeldgruppe, Dientner Grasberge</p>	
	<p>Glocknergruppe Nord, Großvenedigergruppe Nord, Großvenedigergruppe Alpenhauptkamm, Glocknergruppe Alpenhauptkamm, Goldberggruppe Alpenhauptkamm, Niedere Tauern Alpenhauptkamm, Ankogelgruppe, Muhr, Niedere Tauern Süd, Goldberggruppe Nord, Niedere Tauern Nord</p>	
	<p>Nockberge</p>	

Avalanche problems



Danger ratings

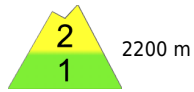




Expositions





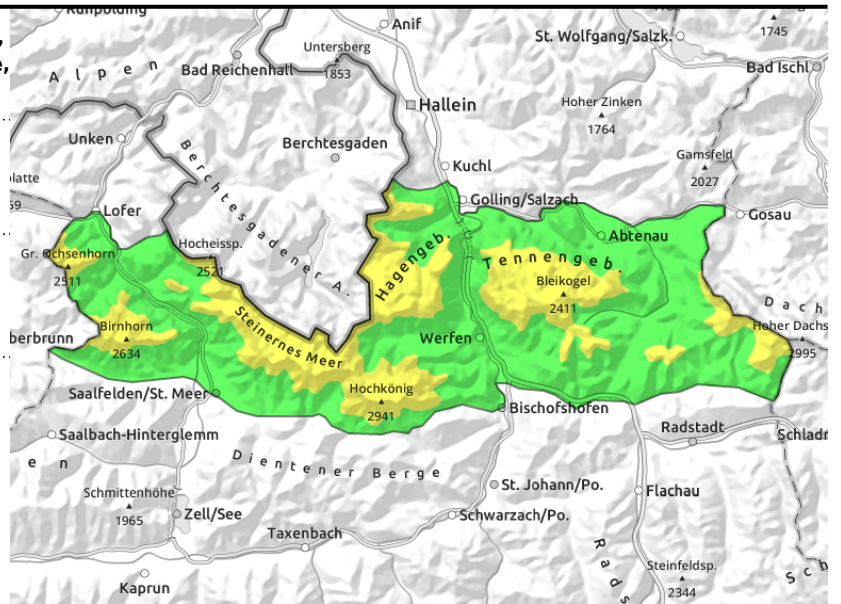
05.04.2022

Loferer und Leoganger Steinberge, Steinernes Meer, Hochkönig, Hagengebirge, Göllstock, Tennengebirge, Gosaukamm



  near ridges, small/shallow snowdrifts above 2200 m

  superficial loose-snow avalanches, mostly small



Small snowdrift masses above 2200m, small loose-snow avalanches in steep terrain

Avalanche danger above 2200 m is MODERATE, below that altitude the danger is LOW. Moist and wet superficial loose-snow avalanches (small-to-medium sized) will become more frequent during the day due to solar radiation, depending on aspect and altitude. They can be triggered by one sole skier in extremely steep terrain. At high altitudes (above 2200m) near ridges, particularly in NE/E/S/SW aspects, small snowdrifts have been generated. A slab (small-to-medium) can be triggered by the weight of one person in some places. The snowdrifts are easily recognized. Their frequency increases with ascending altitude. Isolated glide-snow avalanches (small-to-medium) can release on very steep grassy slopes.

Snowpack structure

Atop a compact, moist old snowpack, mostly topped by a melt-freeze crust, 10-30 cm of snow have been deposited over the last few days. The fresh snow is generally well bonded with the old snowpack. At high altitudes the snow evidences high wind impact.

Weather

On Tuesday, reduced visibility from heavy cloud, occasional light rainfall or snowfall (above 1800m). Strong W/NW winds (40 km/hr in exposed terrain and in high alpine regions). At 2000 m: -1 degree; at 3000 m: -7 degrees. On Wednesday, variably cloudy/sunny, isolated rain showers (it's spring!) possible in late afternoon. Moderate to brisk southerly winds. At 2000 m: +3 degrees; at 3000 m: -5 degrees.

Outlook

Due to warmth and sunshine, the moderate snowdrift problem is diminishing. Below 2200m (depending on aspect) a daytime danger cycle from LOW to MODERATE will develop.

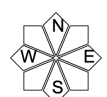
Avalanche problems



Danger ratings



Expositions



05.04.2022

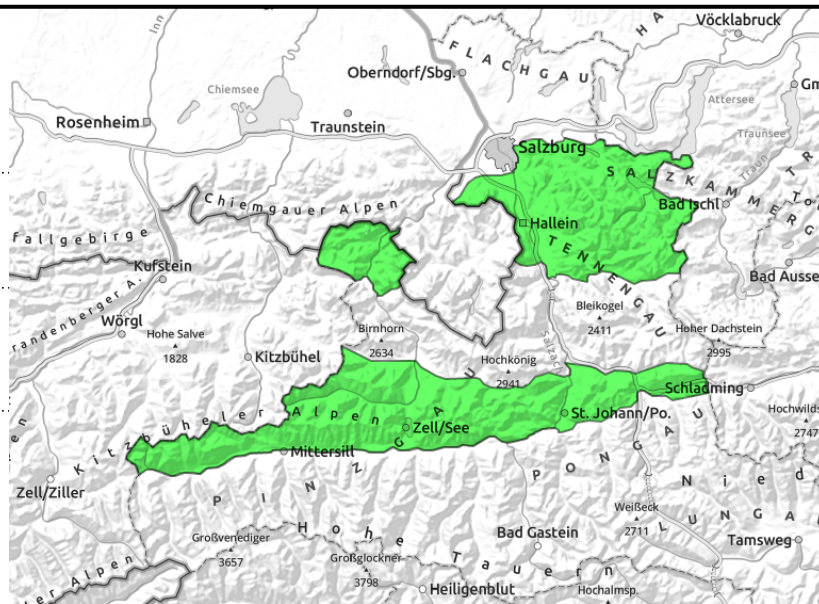
Chiemgauer Alpen, Heutal, Reiteralpe, Untersbergstock, Kitzbüheler Alpen, Glemmtal, Oberpinzgauer Grasberge, Pongauer Grasberge, Osterhorngruppe, Gamsfeldgruppe, Dientner Grasberge



superficial loose-snow avalanches, mostly small



very isolated



Small problem with superficial loose-snow avalanches - otherwise quite favourable

Avalanche danger is LOW. Superficial loose-snow avalanches are a small problem, mostly small and only in very steep terrain, they can be triggered by skiers (risk of slides and being swept along) or trigger naturally on extremely steep rocky slopes.

Very isolated glide-snow avalanches (small-to-medium) can release on very steep grassy slopes.

Snowpack structure

Atop a compact, moist old snowpack, mostly topped by a melt-freeze crust, 5-15 cm of snow have been deposited over the last few days. The fresh snow is generally well bonded with the old snowpack.

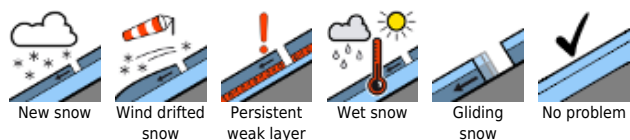
Weather

On Tuesday, reduced visibility from heavy cloud, occasional light rainfall or snowfall (above 1800m). Strong W/NW winds (40 km/hr in exposed terrain and in high alpine regions). At 2000 m: -1 degree. On Wednesday, variably cloudy/sunny, isolated rain showers (it's spring!) possible in late afternoon. Moderate to brisk southerly winds. At 2000 m: +3 degrees.

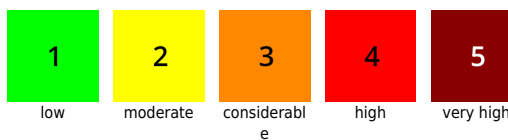
Outlook

Small wet-snow problem: the recent fresh snow can glide on sunny slopes.

Avalanche problems



Danger ratings

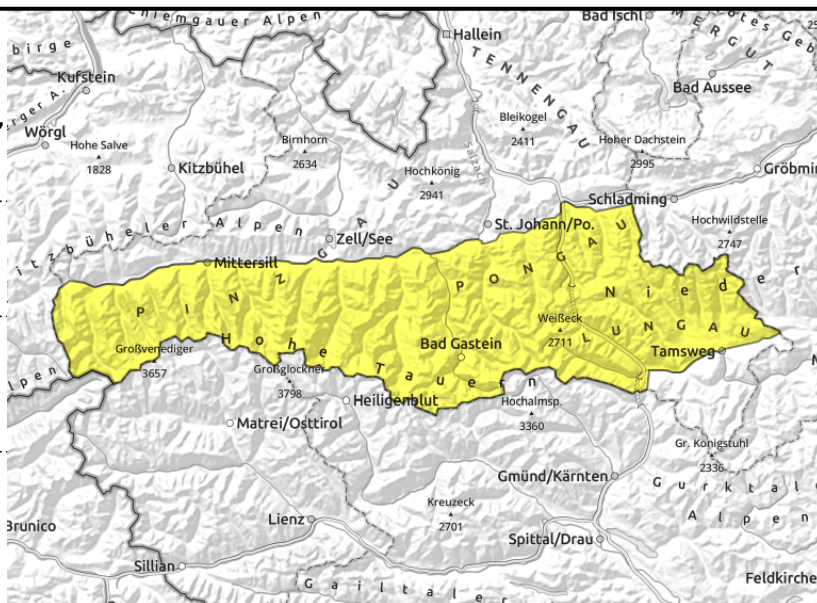


Expositions



05.04.2022

Glocknergruppe Nord, Großvenedigergruppe Nord, Großvenedigergruppe Alpenhauptkamm, Glocknergruppe Alpenhauptkamm, Goldberggruppe Alpenhauptkamm, Niedere Tauern Alpenhauptkamm, Ankogelgruppe, Muhr, Niedere Tauern Süd, Goldberggruppe Nord, Niedere Tauern Nord



ridgeline snowdrifts in extremely steep terrain above 2200 m



naturally triggered avalanche activity, medium-sized, below 2200m

Further up: snowdrifts. Below 2200m: wet-snow problem

Avalanche danger is MODERATE, below 2200m the danger rises from wet snow. Above 2200m, from snowdrifts.

Moist and wet superficial loose-snow avalanches (small-to-medium sized) will become more frequent during the day due to solar radiation, depending on aspect and altitude. They can be triggered by one sole skier in extremely steep terrain.

At high altitudes near ridges, particularly in extended E/S aspects, small snowdrifts have been generated. A slab (small-to-medium) can be triggered by the weight of one person in some places.

The snowdrifts are easily recognized. Their frequency increases with ascending altitude.

Isolated glide-snow avalanches (small-to-medium) can release on very steep grassy slopes.

Snowpack structure

Atop a compact, moist old snowpack, mostly topped by a melt-freeze crust, 20-50 cm of snow have been deposited over the last few days. The fresh snow is generally well bonded with the old snowpack. At high altitudes the snow evidences high wind impact.

Weather

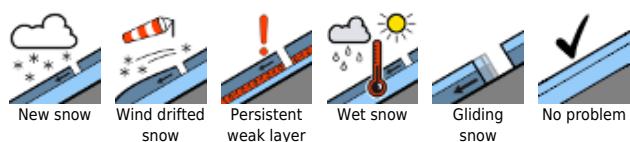
On Tuesday, reduced visibility from heavy cloud, occasional light rainfall or snowfall (above 1800m). Strong W/NW winds (40 km/hr in exposed terrain and in high alpine regions). At 2000 m: -1 degree; at 3000 m: -7 degrees.

On Wednesday, variably cloudy/sunny, isolated rain showers (it's spring!) possible in late afternoon. Moderate to brisk southerly winds. At 2000 m: +3 degrees; at 3000 m: -5 degrees.

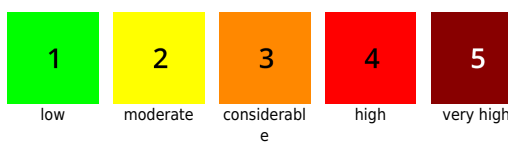
Outlook

Due to warmth and sunshine, the moderate snowdrift problem is diminishing. Below 2200m (depending on aspect) a daytime danger cycle from LOW to MODERATE will develop.

Avalanche problems



Danger ratings



Expositions

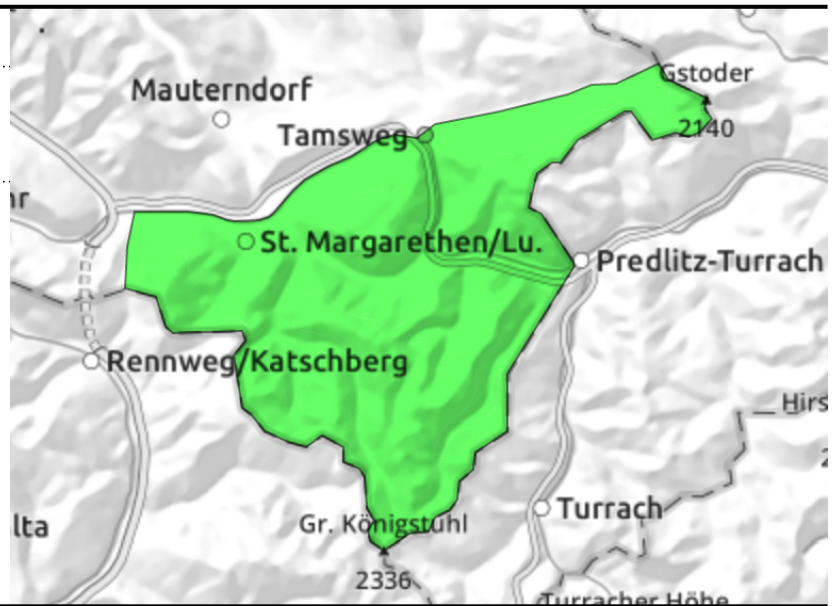


05.04.2022

Nockberge



very few danger zones in outlying terrain



Only isolated avalanche prone locations

Avalanche danger is LOW. Only few spots threaten danger.

Snowpack structure

The snowpack has settled well, with a tiny amount of fresh snow on top. Not much snow on the ground.

Weather

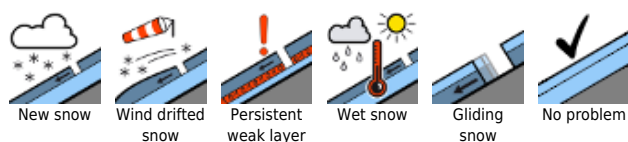
On Tuesday, reduced visibility from heavy cloud, occasional light rainfall or snowfall (above 1800m). Strong W/NW winds (40 km/hr in exposed terrain and in high alpine regions). At 2000 m: -1 degree. On Wednesday, variably cloudy/sunny, isolated rain showers (it's spring!) possible in late afternoon. Moderate to brisk southerly winds. At 2000 m: +3 degrees.

Outlook

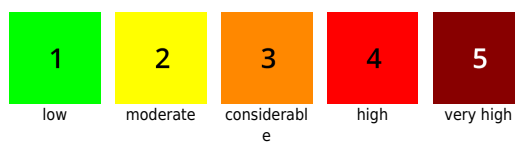
Little change is expected.

Translated by Jeffrey McCabe, www.creativtrans.com

Avalanche problems



Danger ratings



Expositions

