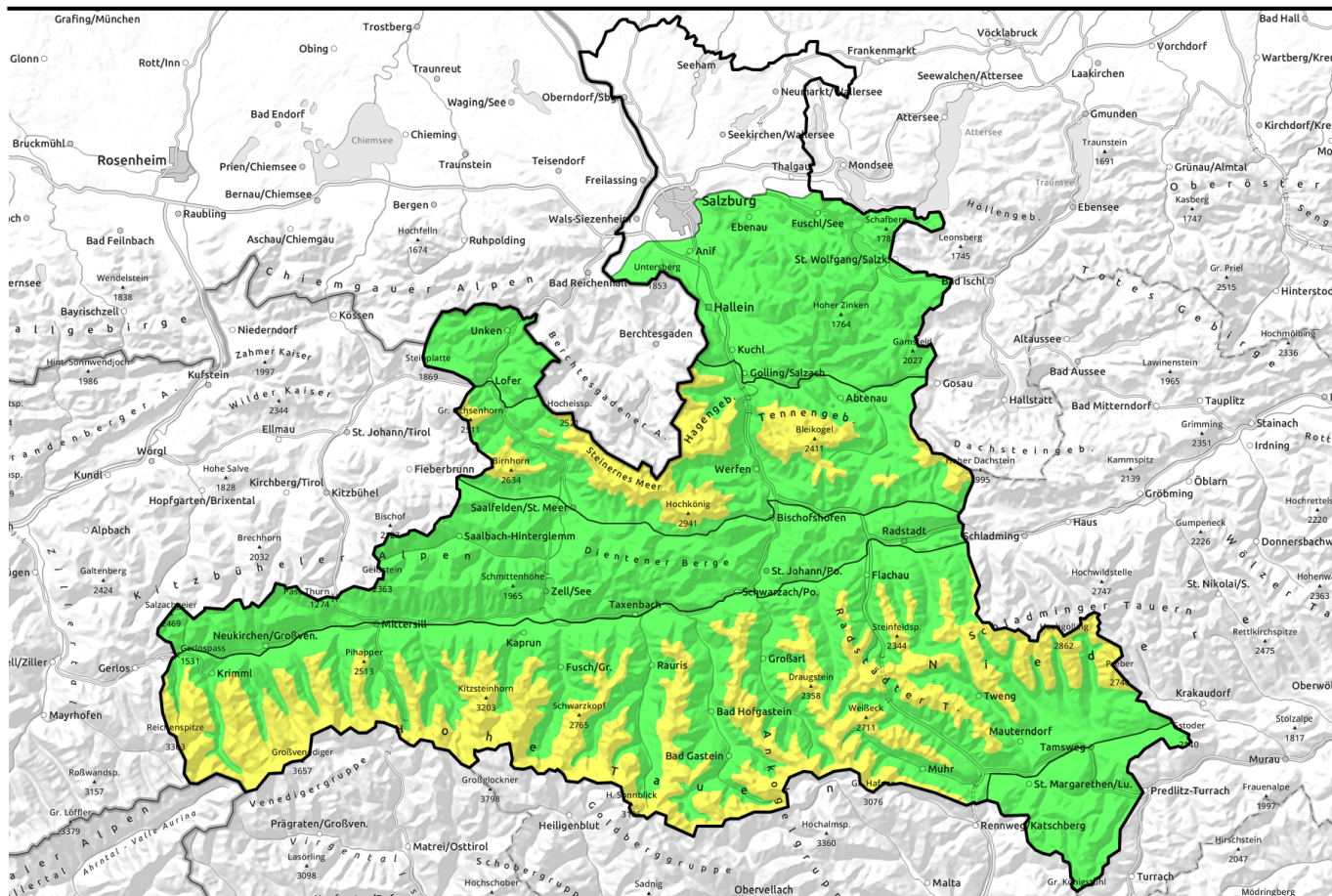


04.04.2022, morning



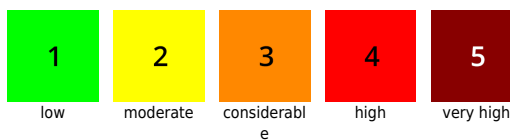
Heed daytime danger cycle

	<p>2000 m Loferer und Leoganger Steinberge, Steinernes Meer, Hochkönig, Hagengebirge, Göllstock, Tennengebirge, Gosaukamm</p>	
	<p>Chiemgauer Alpen, Heutal, Reiteralpe, Untersbergstock, Kitzbüheler Alpen, Glemmtal, Oberpinzgauer Grasberge, Pongauer Grasberge, Osterhorngruppe, Gamsfeldgruppe, Dientner Grasberge</p>	
	<p>2000 m Glocknergruppe Nord, Großvenedigergruppe Nord, Großvenedigergruppe Alpenhauptkamm, Glocknergruppe Alpenhauptkamm, Goldberggruppe Alpenhauptkamm, Niedere Tauern Alpenhauptkamm, Ankogelgruppe, Muhr, Niedere Tauern Süd, Goldberggruppe Nord, Niedere Tauern Nord</p>	
	<p>Nockberge</p>	

Avalanche problems



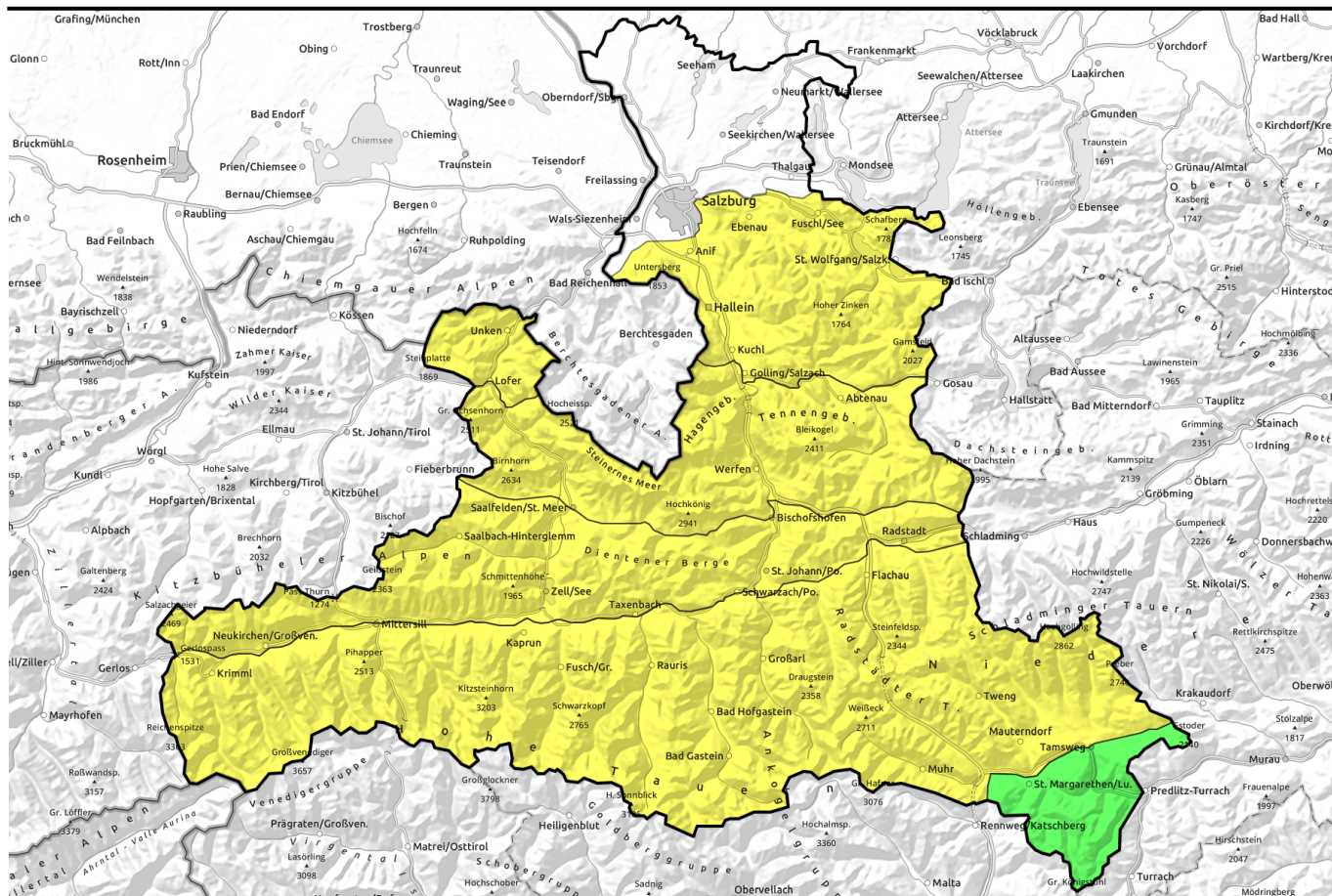
Danger ratings



Expositions



04.04.2022, afternoon



Tagesgang beachten



Loferer und Leoganger Steinberge, Steinernes Meer, Hochkönig, Hagengebirge, Göllstock, Tennengebirge, Gosaukamm



Chiemgauer Alpen, Heutal, Reiteralpe, Untersbergstock, Kitzbüheler Alpen, Glemmtal, Oberpinzgauer Grasberge, Pongauer Grasberge, Osterhorngruppe, Gamsfeldgruppe, Dientner Grasberge



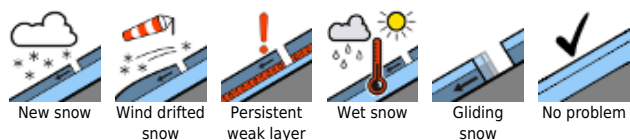
Glocknergruppe Nord, Großvenedigergruppe Nord, Großvenedigergruppe Alpenhauptkamm, Glocknergruppe Alpenhauptkamm, Goldberggruppe Alpenhauptkamm, Niedere Tauern Alpenhauptkamm, Ankogelgruppe, Muhr, Niedere Tauern Süd, Goldberggruppe Nord, Niedere Tauern Nord



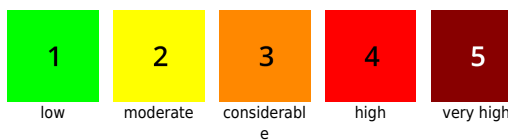
Nockberge



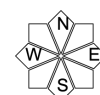
Avalanche problems



Danger ratings



Expositions



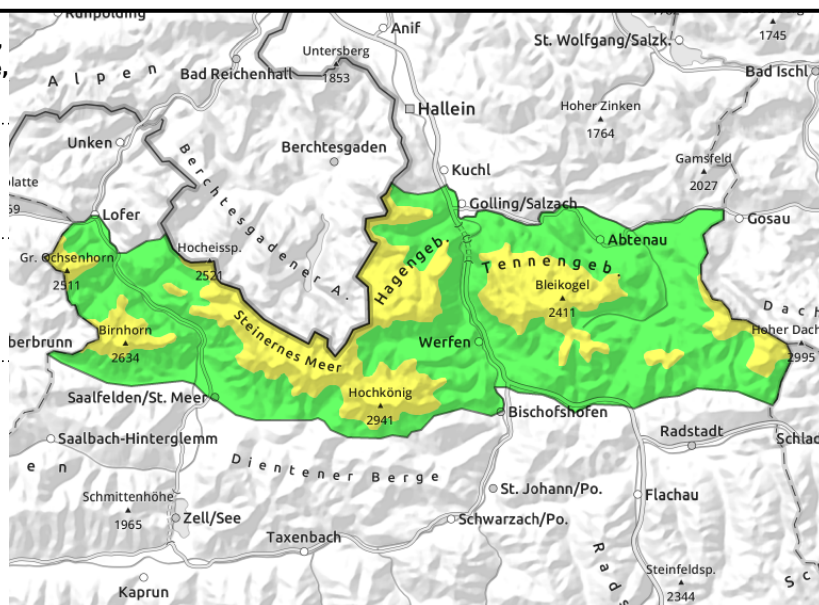
04.04.2022, morning

Loferer und Leoganger Steinberge, Steinernes Meer, Hochkönig, Hagengebirge, Göllstock, Tennengebirge, Gosaukamm



near ridges, small/shallow snowdrift masses

daytime cycle of naturally triggered avalanche activity



Fresh snowdrifts at high altitudes + Daytime danger cycle

Avalanche danger above 2000 m is MODERATE all day long, below that altitude the danger rises from LOW to MODERATE.

Moist and wet superficial loose-snow avalanches (small-to-medium sized) will become more frequent during the day due to solar radiation, depending on aspect and altitude. They can be triggered by one sole skier in extremely steep terrain.

At high altitudes near ridges, particularly in extended E/S aspects, small snowdrifts have been generated. A slab (small-to-medium) can be triggered by the weight of one person in some places. The snowdrifts are easily recognized. Their frequency increases with ascending altitude. Isolated glide-snow avalanches (small-to-medium) can release on very steep grassy slopes.

Snowpack structure

Atop a compact, moist old snowpack, mostly topped by a melt-freeze crust, 5-30 cm of snow have been deposited over the last few days. The fresh snow is generally well bonded with the old snowpack. At high altitudes the snow evidences high wind impact.

Weather

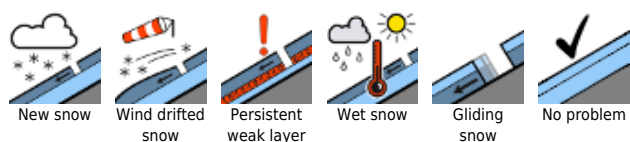
On Monday, mostly dry weather, lots of sunshine, good visibility. Moderate westerly winds. Temperatures will rise during the day, at 2000 m from -10 to -4 degrees.

On Tuesday, reduced visibility due to clouds and fog. Some rainfall (snow above 1700 m). At 2000 m: temperatures will rise to -1 degree. Brisk westerly winds in some places.

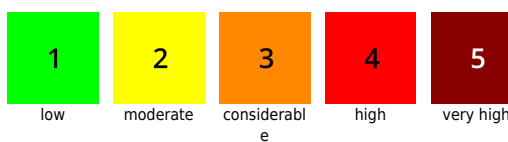
Outlook

Little change. Mild and windy weather will create a wet-snow problem at intermediate altitude and fresh snowdrifts at high altitudes.

Avalanche problems



Danger ratings



Expositions



04.04.2022, afternoon

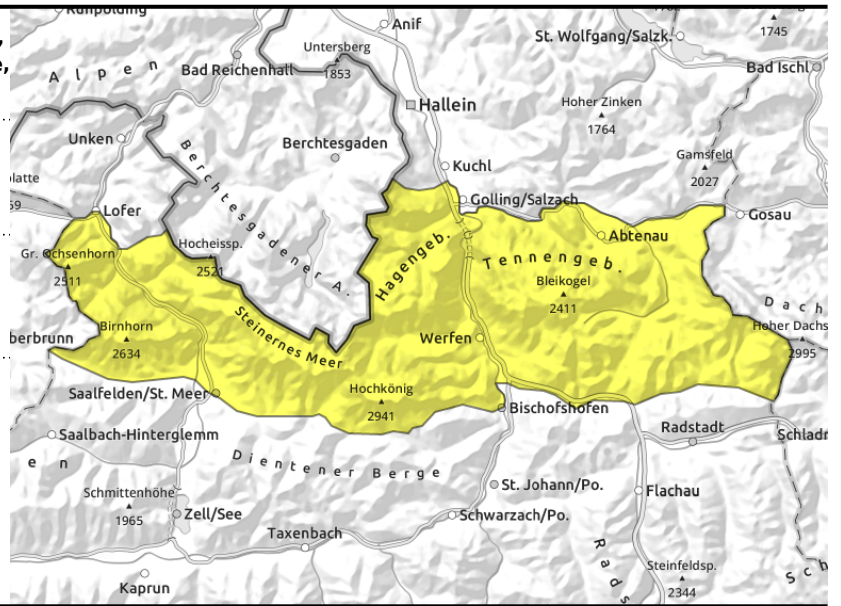
Loferer und Leoganger Steinberge, Steinernes Meer, Hochkönig, Hagengebirge, Göllstock, Tennengebirge, Gosaukamm



near ridges, small/shallow snowdrift masses



daytime cycle of naturally triggered avalanche activity



Fresh snowdrifts at high altitudes + Daytime danger cycle

Avalanche danger above 2000 m is MODERATE all day long, below that altitude the danger rises from LOW to MODERATE.

Moist and wet superficial loose-snow avalanches (small-to-medium sized) will become more frequent during the day due to solar radiation, depending on aspect and altitude. They can be triggered by one sole skier in extremely steep terrain.

At high altitudes near ridges, particularly in extended E/S aspects, small snowdrifts have been generated. A slab (small-to-medium) can be triggered by the weight of one person in some places. The snowdrifts are easily recognized. Their frequency increases with ascending altitude. Isolated glide-snow avalanches (small-to-medium) can release on very steep grassy slopes.

Snowpack structure

Atop a compact, moist old snowpack, mostly topped by a melt-freeze crust, 5-30 cm of snow have been deposited over the last few days. The fresh snow is generally well bonded with the old snowpack. At high altitudes the snow evidences high wind impact.

Weather

On Monday, mostly dry weather, lots of sunshine, good visibility. Moderate westerly winds.

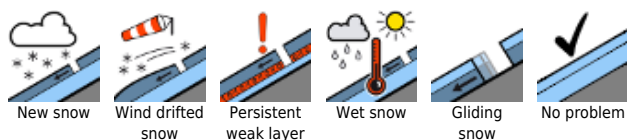
Temperatures will rise during the day, at 2000 m from -10 to -4 degrees.

On Tuesday, reduced visibility due to clouds and fog. Some rainfall (snow above 1700 m). At 2000 m: temperatures will rise to -1 degree. Brisk westerly winds in some places.

Outlook

Little change. Mild and windy weather will create a wet-snow problem at intermediate altitude and fresh snowdrifts at high altitudes.

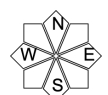
Avalanche problems



Danger ratings



Expositions

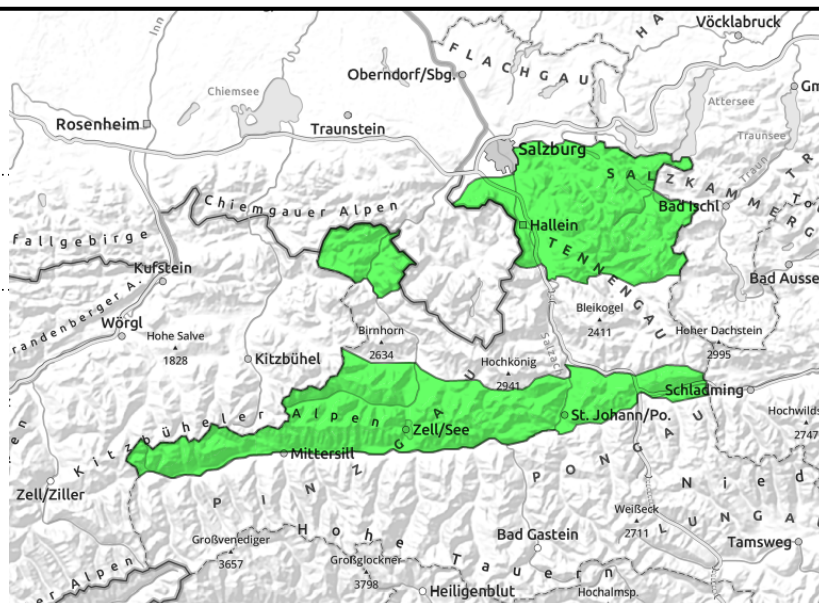


04.04.2022, morning

Chiemgauer Alpen, Heutal, Reiteralpe, Untersbergstock, Kitzbüheler Alpen, Glemmtal, Oberpinzgauer Grasberge, Pongauer Grasberge, Osterhorngruppe, Gamsfeldgruppe, Dientner Grasberge



Daytime cycle of naturally triggered avalanche activity



Sunshine will create slides

Avalanche danger will rise from LOW to MODERATE in the course of the day. Moist and wet superficial loose-snow avalanches (small-to-medium sized) will become more frequent during the day due to solar radiation, depending on aspect and altitude. They can be triggered by one sole skier in extremely steep terrain.

Isolated glide-snow avalanches (small-to-medium) can release on very steep grassy slopes.

Snowpack structure

Atop a compact, moist old snowpack, mostly topped by a melt-freeze crust, 5-30 cm of snow have been deposited over the last few days. The fresh snow is generally well bonded with the old snowpack.

Weather

On Monday, mostly dry weather, lots of sunshine, good visibility. Moderate westerly winds. Temperatures will rise during the day, at 2000 m from -10 to -4 degrees.

On Tuesday, reduced visibility due to clouds and fog. Some rainfall (snow above 1700 m). At 2000 m: temperatures will rise to -1 degree. Brisk westerly winds in some places.

Outlook

The wet-snow problem will persist over the next few days due to mild temperatures.

Avalanche problems



Danger ratings

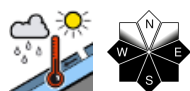


Expositions

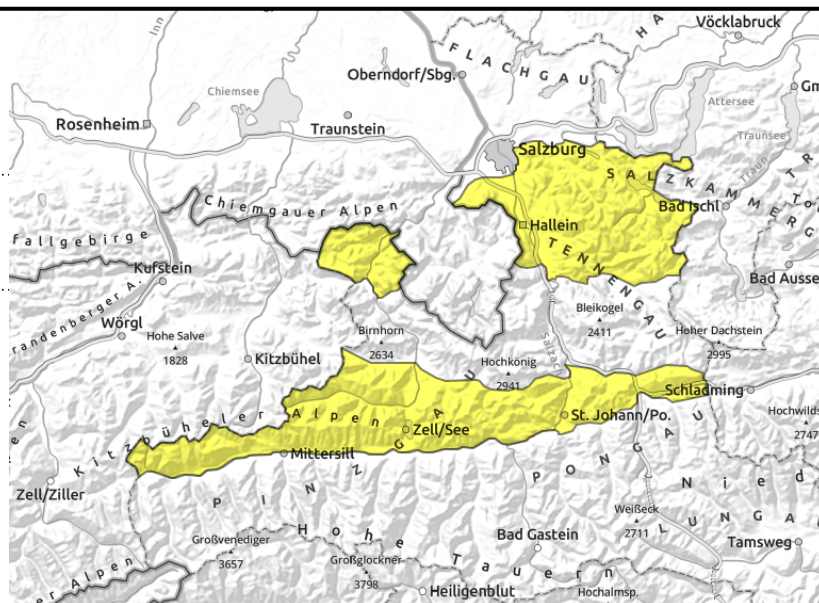


04.04.2022, afternoon

Chiemgauer Alpen, Heutal, Reiteralpe, Untersbergstock, Kitzbüheler Alpen, Glemmtal, Oberpinzgauer Grasberge, Pongauer Grasberge, Osterhorngruppe, Gamsfeldgruppe, Dientner Grasberge



Daytime cycle of naturally triggered avalanche activity



Sunshine will create slides

Avalanche danger will rise from LOW to MODERATE in the course of the day. Moist and wet superficial loose-snow avalanches (small-to-medium sized) will become more frequent during the day due to solar radiation, depending on aspect and altitude. They can be triggered by one sole skier in extremely steep terrain.

Isolated glide-snow avalanches (small-to-medium) can release on very steep grassy slopes.

Snowpack structure

Atop a compact, moist old snowpack, mostly topped by a melt-freeze crust, 5-30 cm of snow have been deposited over the last few days. The fresh snow is generally well bonded with the old snowpack.

Weather

On Monday, mostly dry weather, lots of sunshine, good visibility. Moderate westerly winds. Temperatures will rise during the day, at 2000 m from -10 to -4 degrees.

On Tuesday, reduced visibility due to clouds and fog. Some rainfall (snow above 1700 m). At 2000 m: temperatures will rise to -1 degree. Brisk westerly winds in some places.

Outlook

The wet-snow problem will persist over the next few days due to mild temperatures.

Avalanche problems



Danger ratings

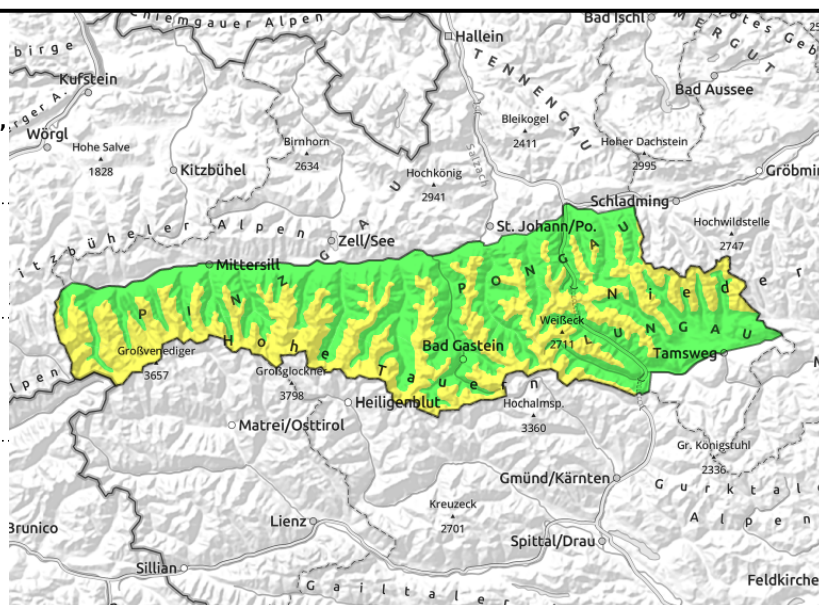
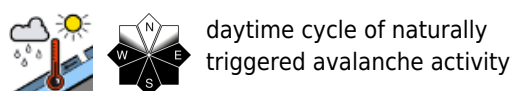


Expositions



04.04.2022, morning

Glocknergruppe Nord, Großvenedigergruppe Nord, Großvenedigergruppe Alpenhauptkamm, Glocknergruppe Alpenhauptkamm, Goldberggruppe Alpenhauptkamm, Niedere Tauern Alpenhauptkamm, Ankogelgruppe, Muhr, Niedere Tauern Süd, Goldberggruppe Nord, Niedere Tauern Nord



Fresh snowdrifts at high altitudes + Daytime danger cycle

Avalanche danger above 2000 m is MODERATE all day long, below that altitude the danger rises from LOW to MODERATE.

Moist and wet superficial loose-snow avalanches (small-to-medium sized) will become more frequent during the day due to solar radiation, depending on aspect and altitude. They can be triggered by one sole skier in extremely steep terrain.

At high altitudes near ridges, particularly in extended E/S aspects, small snowdrifts have been generated. A slab (small-to-medium) can be triggered by the weight of one person in some places.

The snowdrifts are easily recognized. Their frequency increases with ascending altitude.

Isolated glide-snow avalanches (small-to-medium) can release on very steep grassy slopes.

Snowpack structure

Atop a compact, moist old snowpack, mostly topped by a melt-freeze crust, 20-50 cm of snow have been deposited over the last few days. The fresh snow is generally well bonded with the old snowpack. At high altitudes the snow evidences high wind impact.

Weather

On Monday, mostly dry weather, lots of sunshine, good visibility. Moderate westerly winds.

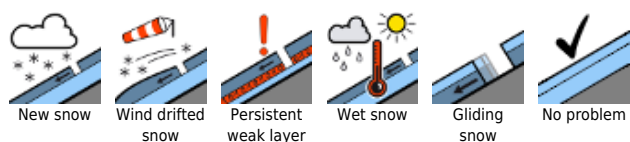
Temperatures will rise during the day, at 2000 m from -10 to -4 degrees; at 3000 m: -12 degrees.

On Tuesday, reduced visibility due to clouds and fog. In the afternoon some peaks will be shrouded in fog. At 2000 m: temperatures will rise to -1 degree; at 3000m: -6 degrees. Not much precipitation is expected. Brisk westerly winds in some places.

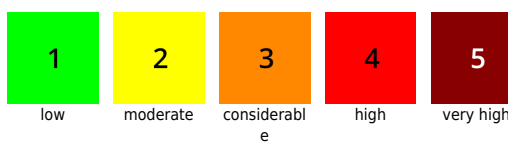
Outlook

Little change. Mild and windy weather will create a wet-snow problem at intermediate altitude and fresh snowdrifts at high altitudes.

Avalanche problems



Danger ratings

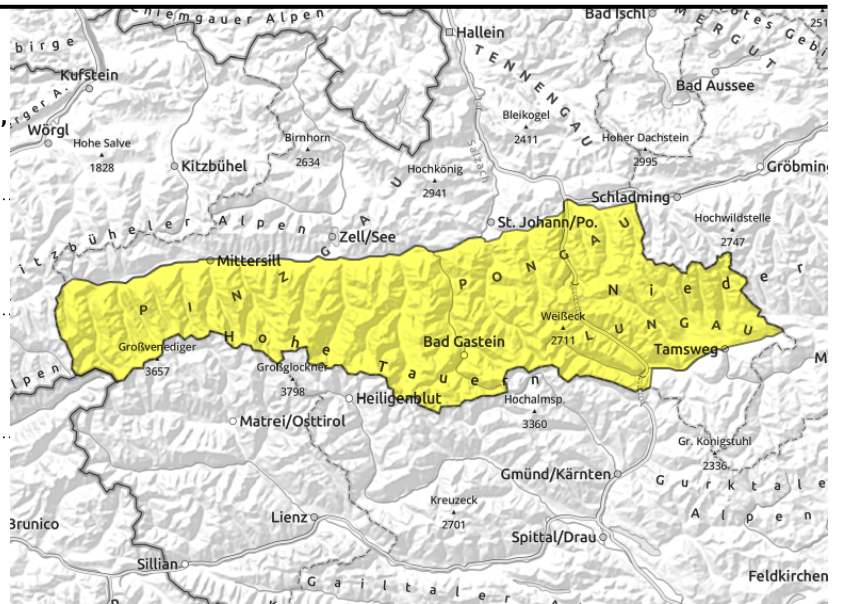


Expositions



04.04.2022, afternoon

Glocknergruppe Nord, Großvenedigergruppe Nord, Großvenedigergruppe Alpenhauptkamm, Glocknergruppe Alpenhauptkamm, Goldberggruppe Alpenhauptkamm, Niedere Tauern Alpenhauptkamm, Ankogelgruppe, Muhr, Niedere Tauern Süd, Goldberggruppe Nord, Niedere Tauern Nord



near ridges



daytime cycle of naturally triggered avalanche activity

Fresh snowdrifts at high altitudes + Daytime danger cycle

Avalanche danger above 2000 m is MODERATE all day long, below that altitude the danger rises from LOW to MODERATE.

Moist and wet superficial loose-snow avalanches (small-to-medium sized) will become more frequent during the day due to solar radiation, depending on aspect and altitude. They can be triggered by one sole skier in extremely steep terrain.

At high altitudes near ridges, particularly in extended E/S aspects, small snowdrifts have been generated. A slab (small-to-medium) can be triggered by the weight of one person in some places. The snowdrifts are easily recognized. Their frequency increases with ascending altitude. Isolated glide-snow avalanches (small-to-medium) can release on very steep grassy slopes.

Snowpack structure

Atop a compact, moist old snowpack, mostly topped by a melt-freeze crust, 20-50 cm of snow have been deposited over the last few days. The fresh snow is generally well bonded with the old snowpack. At high altitudes the snow evidences high wind impact.

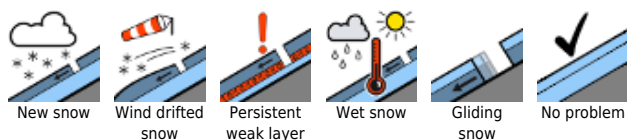
Weather

On Monday, mostly dry weather, lots of sunshine, good visibility. Moderate westerly winds. Temperatures will rise during the day, at 2000 m from -10 to -4 degrees; at 3000 m: -12 degrees. On Tuesday, reduced visibility due to clouds and fog. In the afternoon some peaks will be shrouded in fog. At 2000 m: temperatures will rise to -1 degree; at 3000m: -6 degrees. Not much precipitation is expected. Brisk westerly winds in some places.

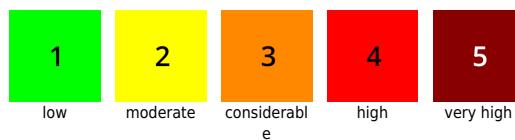
Outlook

Little change. Mild and windy weather will create a wet-snow problem at intermediate altitude and fresh snowdrifts at high altitudes.

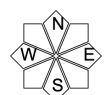
Avalanche problems



Danger ratings



Expositions

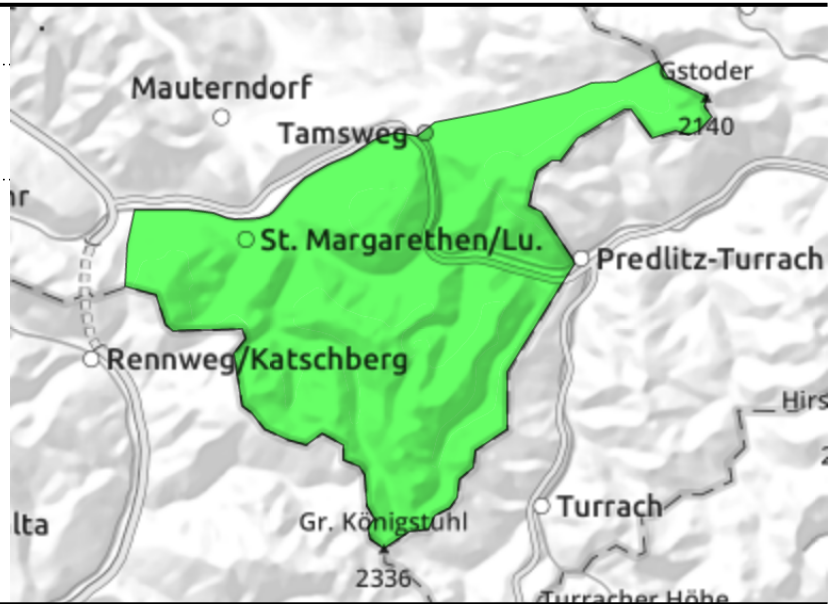


04.04.2022

Nockberge



very few avalanche prone locations in outlying terrain



Only isolated danger zones

Avalanche danger is LOW. Only very few zones threaten danger.

Snowpack structure

The snowpack has settled well. Or else there is not much snow on the ground.

Weather

On Monday mostly overcast, more sunshine in the afternoon. At 2000 m: rising from -10 to -5 degrees.

On Tuesday, mostly overcast. Slightly milder. At 2000 m: rising to +1 degree.

Outlook

Little change

Translated by Jeffrey McCabe, www.creativtrans.com

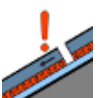
Avalanche problems



New snow



Wind drifted snow



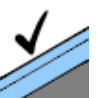
Persistent weak layer



Wet snow



Gliding snow



No problem

Danger ratings



1

low



2

moderate



3

considerable



4

high



5

very high

Expositions

