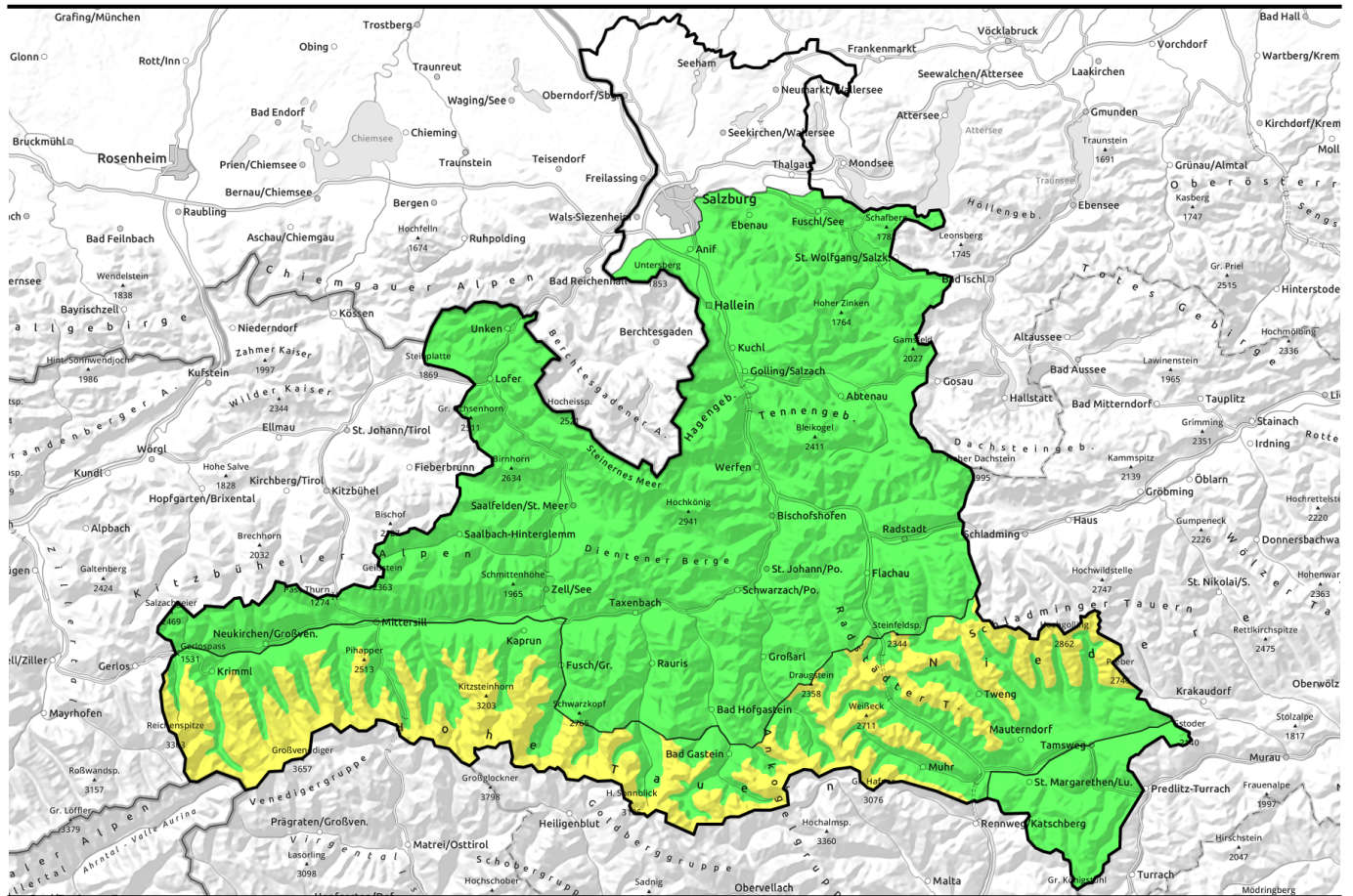


03.04.2022



## Moderate snowdrift problem on Main Alpine Ridge



Osterhorngruppe, Gamsfeldgruppe, Untersbergstock, Chiemgauer Alpen, Heutal, Reiteralpe, Loferer und Leoganger Steinberge, Steinernes Meer, Hochkönig, Hagengebirge, Göllstock, Tennengebirge, Gosaukamm, Pongauer Grasberge, Niedere Tauern Nord, Dientner Grasberge, Goldberggruppe Nord, Kitzbüheler Alpen, Glemmtal, Oberpinzgauer Grasberge, Nockberge

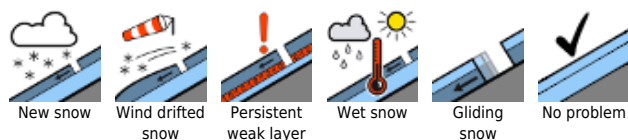


2000 m

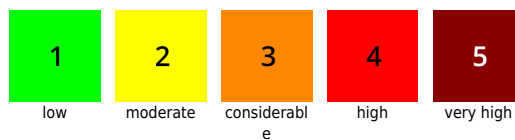
Großvenedigergruppe Alpenhauptkamm, Glocknergruppe Alpenhauptkamm, Goldberggruppe Alpenhauptkamm, Niedere Tauern Alpenhauptkamm, Ankogelgruppe, Muhr, Niedere Tauern Süd, Glocknergruppe Nord, Großvenedigergruppe Nord



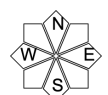
### Avalanche problems



### Danger ratings

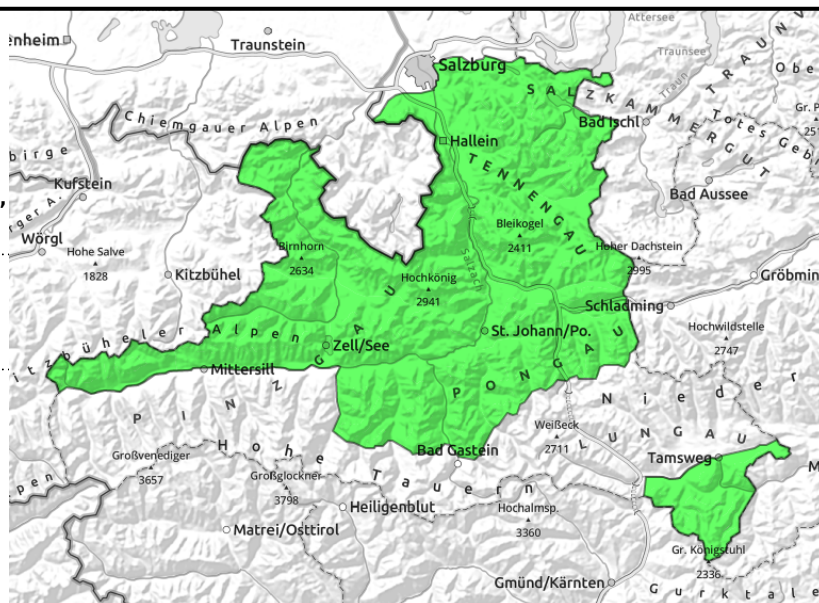


### Expositions



**03.04.2022**

Osterhorngruppe, Gamsfeldgruppe, Untersbergstock, Chiemgauer Alpen, Heutal, Reiteralpe, Loferer und Leoganger Steinberge, Steinernes Meer, Hochkönig, Hagengebirge, Göllstock, Tennengebirge, Gosaukamm, Pongauer Grasberge, Niedere Tauern Nord, Dientner Grasberge, Goldberggruppe Nord, Kitzbüheler Alpen, Glemmtal, Oberpinzgauer Grasberge, Nockberge



extremely steep grassy slopes, possible at any time, isolated

## Low avalanche danger

Avalanche danger is LOW. Isolated small-to-medium sized glide-snow avalanches can release on extremely steep slopes where the ground is smooth. Also superficial loose-snow slides are possible on extremely steep slopes. From place to place, snowdrifts have been formed on ridges, but the risks of taking a fall outweigh those of being buried in snow.

### Snowpack structure

A few centimetres of fresh snow have been deposited atop a compact but already quite moist old snowpack.

### Weather

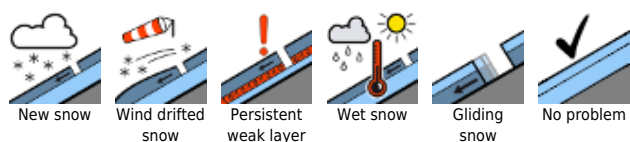
On Sunday, visibility will be starkly reduced due to heavy cloud and some snowfall. During the day, dry weather will gradually dominate, the skies will brighten. The diffuse solar radiation is will be strong. A moderate northerly wind will be blowing. At 2000 m: -10 degrees.

On Monday, generally good visibility, frequent sunshine. Westerly winds will be strong. At 2000 m: between -11 and -4 degrees.

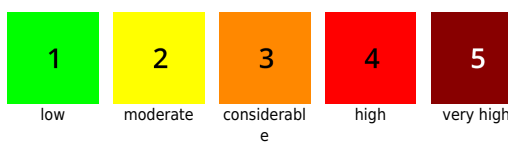
### Outlook

As a result of solar radiation, naturally triggered avalanche activity will increase somewhat on extremely steep slopes on Monday. Minor daytime danger cycle.

#### Avalanche problems



#### Danger ratings





#### Expositions

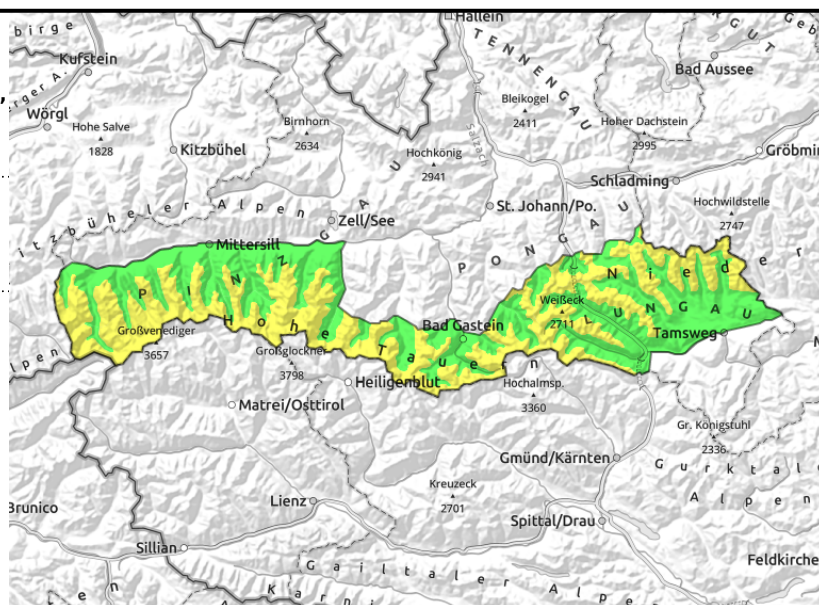


**03.04.2022**

**Großvenedigergruppe Alpenhauptkamm, Glocknergruppe Alpenhauptkamm, Goldberggruppe Alpenhauptkamm, Niedere Tauern Alpenhauptkamm, Ankogelgruppe, Muhr, Niedere Tauern Süd, Glocknergruppe Nord, Großvenedigergruppe Nord**



  near ridges, behind protruberances, shallow, small snowdrift masses



**Caution: fresh snowdrift accumulations**

Avalanche danger above 2000 m is MODERATE, below that altitude danger is LOW. Fresh snow and north winds are generating fresh snowdrift accumulations in extended southern aspects, mostly near ridgelines. Avalanches can sometimes be medium-sized and can be triggered increasingly frequently by the weight of one sole skier with ascending altitude.

Naturally triggered avalanches are possible in extremely steep terrain: small-to-medium superficial loose-snow avalanches and isolated glide-snow avalanches.

**Snowpack structure**

10-40 centimetres of fresh snow have been deposited atop a compact but already quite moist old snowpack, with a melt-freeze crust at high altitudes. The fresh snow was (and still will be) transported by north winds. Potential fracture points for a slab: the fresh snow beneath the drifts.

**Weather**

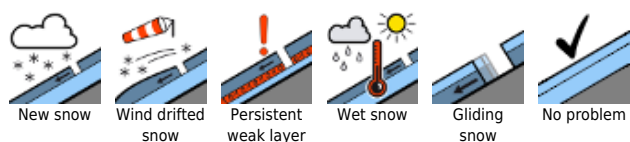
On Sunday, visibility will be starkly reduced due to heavy cloud and some snowfall. During the day, dry weather will gradually dominate, the skies will brighten. The diffuse solar radiation is will be strong. A moderate northerly wind will be blowing. At 2000 m: -10 degrees; at 3000 m: -15 degrees. On Monday, generally good visibility, frequent sunshine. Westerly winds will be strong. At 2000 m: between -11 and -4 degrees; at 3000 m: -13 degrees.

**Outlook**

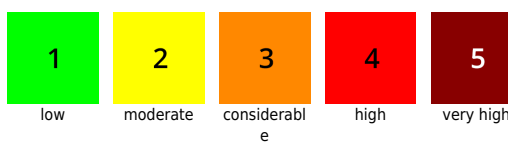
As a result of solar radiation, naturally triggered avalanche activity will increase somewhat on extremely steep slopes on Monday. Minor daytime danger cycle.

Translated by Jeffrey McCabe, [www.creativtrans.com](http://www.creativtrans.com)

**Avalanche problems**



**Danger ratings**



**Expositions**

