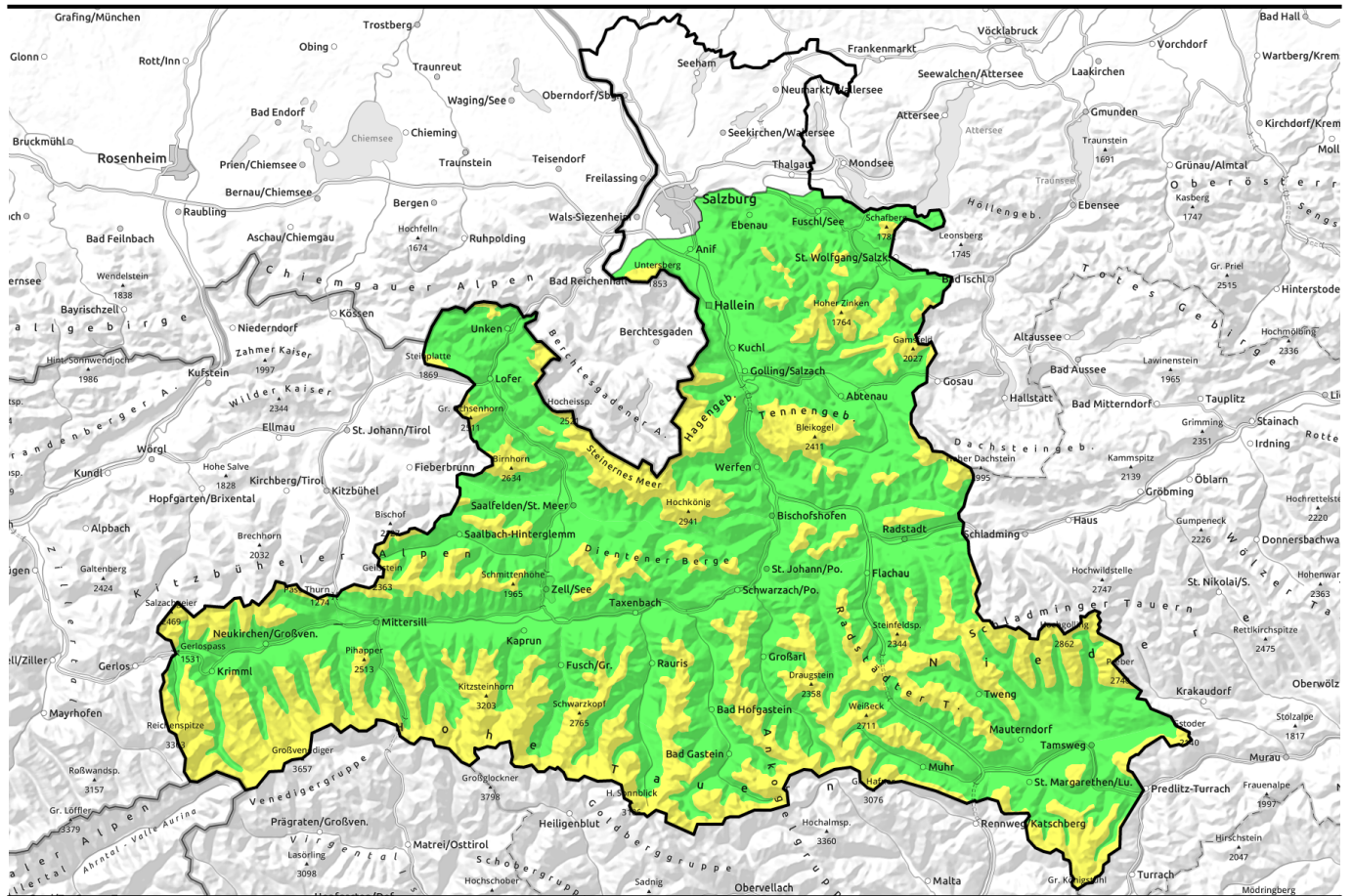


02.04.2022



Fresh snow and northwind forming new snowdrift accumulations

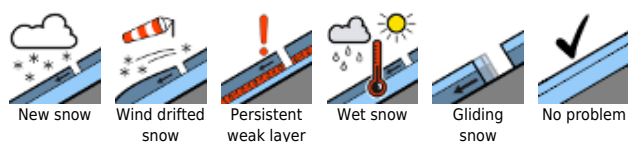


1800 m

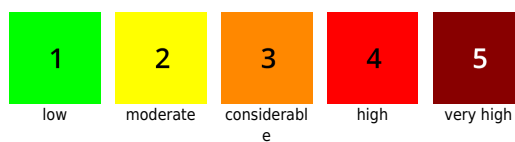
Chiemgauer Alpen, Heutal, Reiteralpe, Loferer und Leoganger Steinberge, Steinernes Meer, Hochkönig, Hagengebirge, Göllstock, Tennengebirge, Gosaukamm, Niedere Tauern Nord, Goldberggruppe Nord, Glocknergruppe Nord, Großvenedigergruppe Nord, Großvenedigergruppe Alpenhauptkamm, Glocknergruppe Alpenhauptkamm, Goldberggruppe Alpenhauptkamm, Niedere Tauern Alpenhauptkamm, Ankogelgruppe, Muhr, Niedere Tauern Süd, Nockberge, Kitzbüheler Alpen, Glemmtal, Oberpinzgauer Grasberge, Dientner Grasberge, Pongauer Grasberge, Osterhorngruppe, Gamsfeldgruppe, Untersbergstock



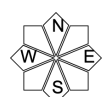
Avalanche problems



Danger ratings

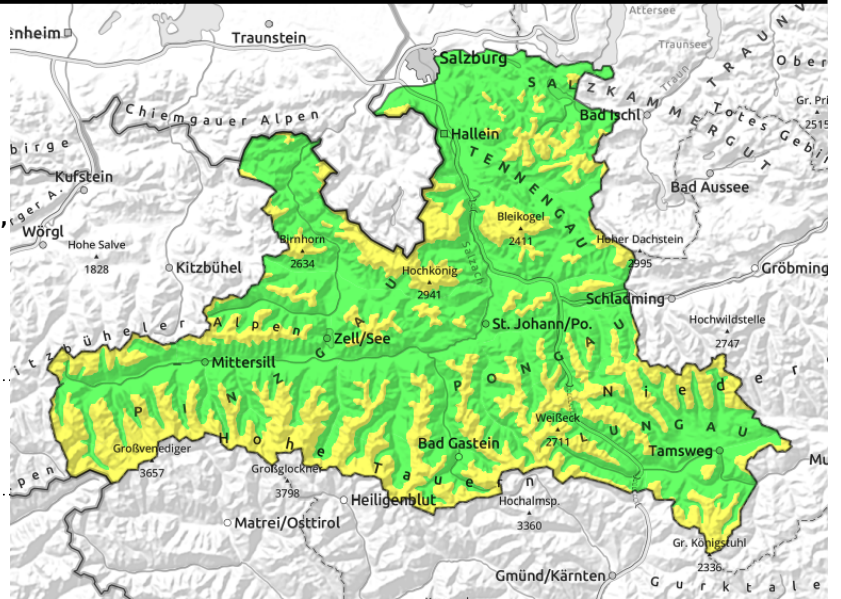


Expositions



02.04.2022

Chiemgauer Alpen, Heutal, Reiteralpe, Loferer und Leoganger Steinberge, Steinernes Meer, Hochkönig, Hagengebirge, Göllstock, Tennengebirge, Gosaukamm, Niedere Tauern Nord, Goldberggruppe Nord, Glocknergruppe Nord, Großvenedigergruppe Nord, Großvenedigergruppe Alpenhauptkamm, Glocknergruppe Alpenhauptkamm, Goldberggruppe Alpenhauptkamm, Niedere Tauern Alpenhauptkamm, Ankogelgruppe, Muhr, Niedere Tauern Süd, Nockberge, Kitzbüheler Alpen, Glemmtal, Oberpinzgauer Grasberge, Dientner Grasberge, Pongauer Grasberge, Osterhorngruppe, Gamsfeldgruppe, Untersbergstock



near ridgelines, behind protruberances, thin, small snowdrift masses

Poor visibility makes risk assessment on-site more difficult

Avalanche danger above 1800 m is MODERATE, below that altitude danger is LOW. Northerly winds will form fresh snowdrift accumulations in extended southern aspects during the day which can be triggered even by the weight of one sole skier with ascending altitude, but the releases will remain small. Isolated small-to-medium loose-snow avalanches in extremely steep terrain are possible. In highly isolated cases, glide-snow avalanches are still possible in these lower temperatures.

Snowpack structure

The old snowpack is compact and moist/wet up to high altitudes. The fresh snow is bonding well with it. With increasing altitude, bonding of fresh snow/snowdrifts worsens. Fracture zones lie between the fresh snow masses and in high alpine region at the borderline to the old snow.

Weather

On Saturday, reduced visibility, the peaks will be shrouded in fog. Repeated bouts of snowfall from the heavy cloud cover (10-20 cm fresh snow). Winds will be northerly, brisk in the afternoon. At 2000 m: between -11 and -6 degrees; at 3000 m: -13 degrees.

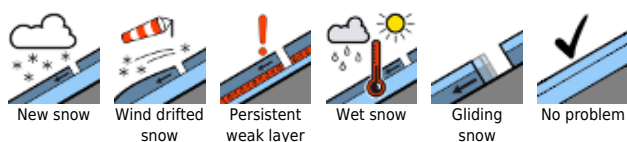
On Sunday, visibility initially much reduced due to heavy snowfall. During the day, dry weather will press forward, the clouds disperse, the sun come out at least with diffuse light. Moderate northerly winds will prevail. At 2000 m: -10 degrees; at 3000 m: -15 degrees.

Outlook

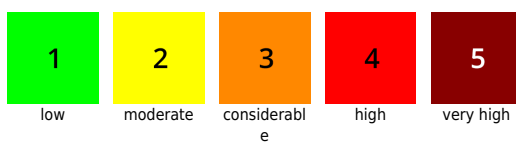
At high altitudes, moderate snowdrift problem. As sunshine emerges, mostly small loose-snow avalanches in extremely steep terrain.

Translated by Jeffrey McCabe, www.creativtrans.com

Avalanche problems



Danger ratings



Expositions

