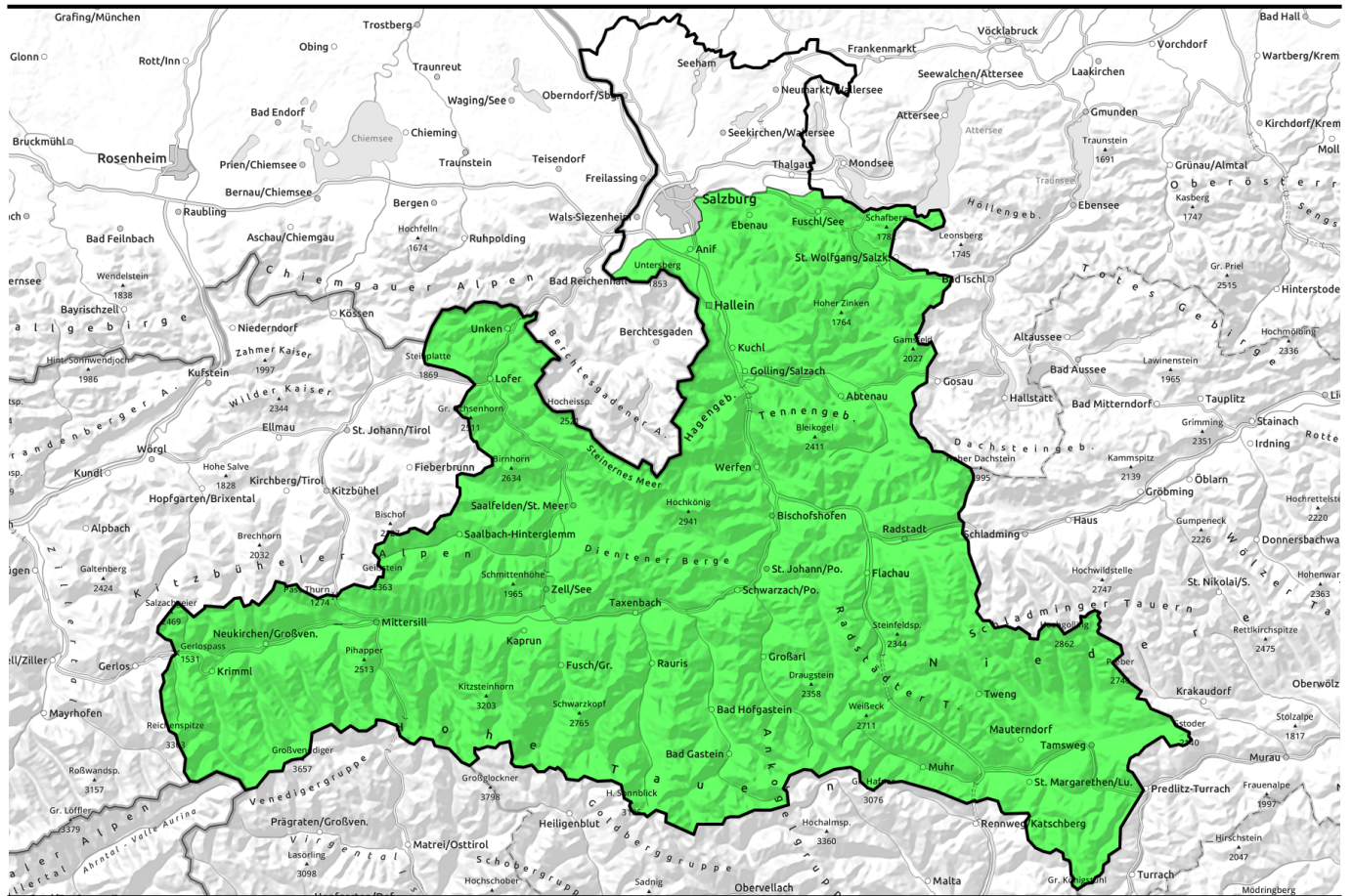


01.04.2022



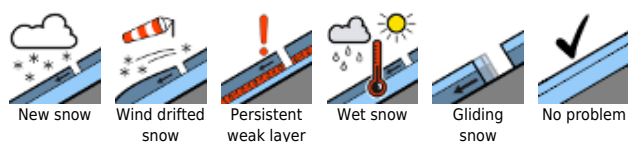
## Favorable situation but poor visibility



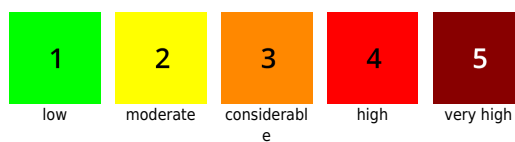
Untersbergstock, Osterhorngruppe, Gamsfeldgruppe, Steinernes Meer, Hochkönig, Hagengebirge, Göllstock, Chiemgauer Alpen, Heutal, Reiteralpe, Loferer und Leoganger Steinberge, Kitzbüheler Alpen, Glemmtal, Oberpinzgauer Grasberge, Großvenedigergruppe Nord, Großvenedigergruppe Alpenhauptkamm, Glocknergruppe Nord, Glocknergruppe Alpenhauptkamm, Dientner Grasberge, Goldberggruppe Nord, Goldberggruppe Alpenhauptkamm, Tennengebirge, Gosaukamm, Pongauer Grasberge, Niedere Tauern Nord, Niedere Tauern Alpenhauptkamm, Niedere Tauern Süd, Ankogelgruppe, Muhr, Nockberge



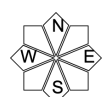
### Avalanche problems



### Danger ratings

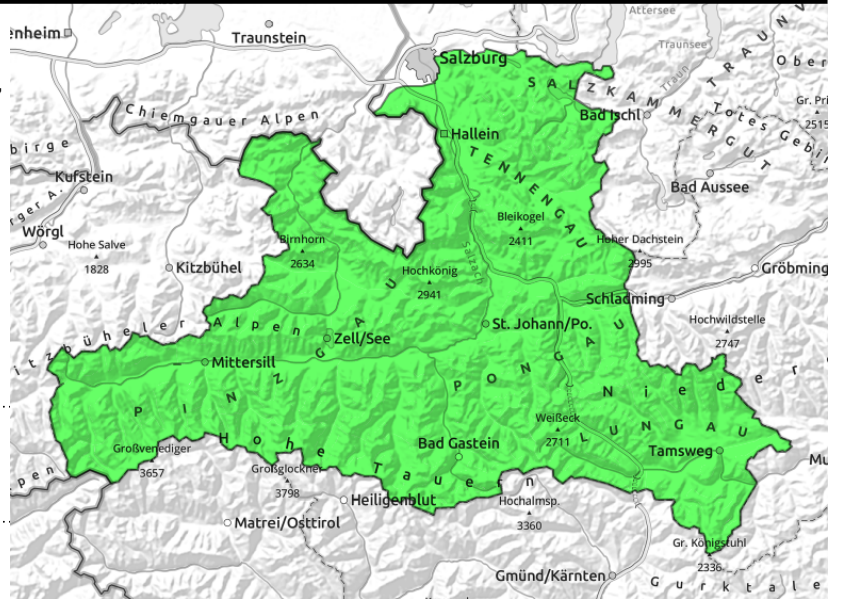


### Expositions



**01.04.2022**

Untersbergstock, Osterhorngruppe, Gamsfeldgruppe, Steinernes Meer, Hochkönig, Hagengebirge, Göllstock, Chiemgauer Alpen, Heutal, Reiteralpe, Loferer und Leoganger Steinberge, Kitzbüheler Alpen, Glemmtal, Oberpinzgauer Grasberge, Großvenedigergruppe Nord, Großvenedigergruppe Alpenhauptkamm, Glocknergruppe Nord, Glocknergruppe Alpenhauptkamm, Dientner Grasberge, Goldberggruppe Nord, Goldberggruppe Alpenhauptkamm, Tennengebirge, Gosaukamm, Pongauer Grasberge, Niedere Tauern Nord, Niedere Tauern Alpenhauptkamm, Niedere Tauern Süd, Ankogelgruppe, Muhr, Nockberge



on extremely steep grass-covered slopes, small-to-medium, isolated, possible at any time

## Low avalanche danger

Avalanche danger is LOW. In extremely steep terrain on smooth isolated small-to-medium glide-snow avalanches can release. Cracks in the snowpack can indicate imminent danger, thus, they should be avoided. In extremely steep high-altitude and high alpine terrain, loose-snow slides can release.

## Snowpack structure

Atop a compact old snowpack, a few centimetres of fresh snow have been deposited, which is bonding well with the old snowpack.

## Weather

On Friday, visibility often reduced due to clouds and fog. Intermittent minor rainfall/snowfall (5 cm). The snowfall level in the Northern Alps lies at 1000 m, in the Tauern and Nockberge at 1500 m, descending during the day. Winds will be minor: in the afternoon, moderate northerly wind will arise in the Northern Alps, in the Tauern a light southerly wind will be blowing. At 2000 m: -1 degree; at 3000 m: -9 degrees.

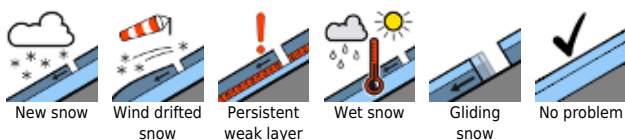
On Saturday, reduced visibility due to clouds, the peaks will be shrouded in fog. From heavy clouds repeated bouts of snowfall can be expected (10-20 cm). Northerly winds will be strong, on the Main Alpine Ridge reaching 50 km/hr in the afternoon. Temperatures will drop further. At 2000 m: -9 degrees; at 3000 m: -13 degrees.

## Outlook

As a result of descending temperatures, fresh snow, intensifying northerly winds, avalanche danger will increase somewhat on Saturday (snowdrift problem).

Translated by Jeffrey McCabe, [www.creativtrans.com](http://www.creativtrans.com)

### Avalanche problems



### Danger ratings



### Expositions

