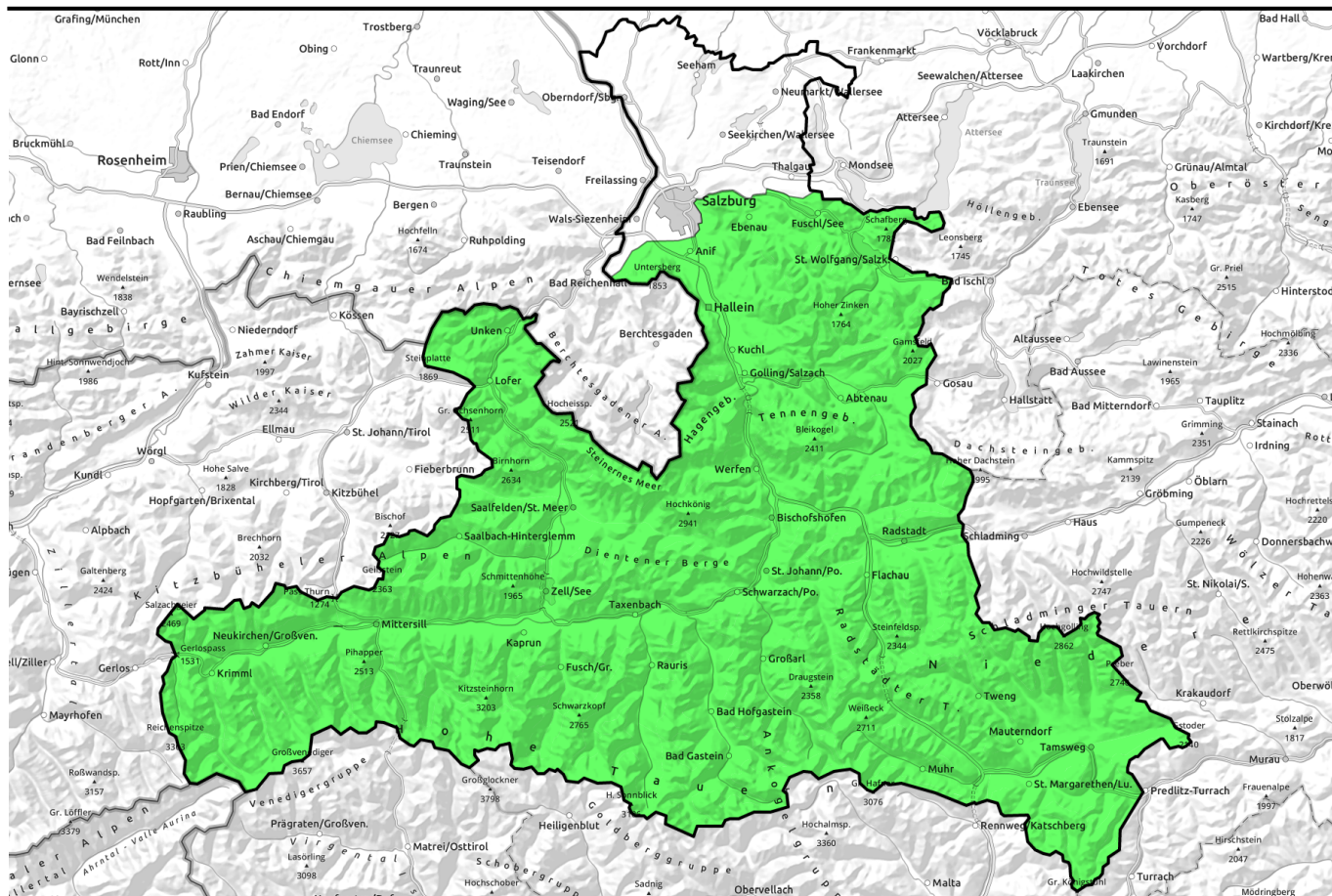


31.03.2022



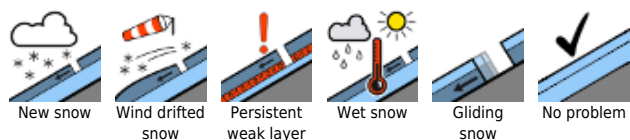
Isolated glide-snow avalanches, poor visibility



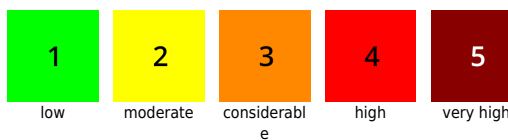
Untersbergstock, Osterhorngruppe, Gamsfeldgruppe, Steinernes Meer, Hochkönig, Hagengebirge, Göllstock, Chiemgauer Alpen, Heutal, Reiteralpe, Loferer und Leoganger Steinberge, Kitzbüheler Alpen, Glemmtal, Oberpinzgauer Grasberge, Großvenedigergruppe Nord, Großvenedigergruppe Alpenhauptkamm, Glocknergruppe Nord, Glocknergruppe Alpenhauptkamm, Dientner Grasberge, Goldberggruppe Nord, Goldberggruppe Alpenhauptkamm, Tennengebirge, Gosaukamm, Pongauer Grasberge, Niedere Tauern Nord, Niedere Tauern Alpenhauptkamm, Niedere Tauern Süd, Ankogelgruppe, Muhr, Nockberge



Avalanche problems



Danger ratings

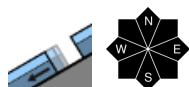
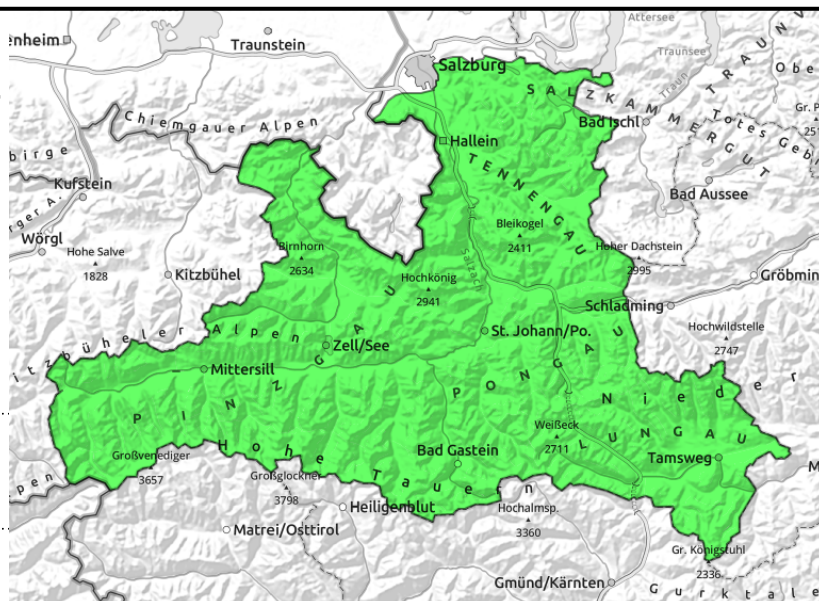


Expositions



31.03.2022

Untersbergstock, Osterhorngruppe, Gamsfeldgruppe, Steinernes Meer, Hochkönig, Hagengebirge, Göllstock, Chiemgauer Alpen, Heutal, Reiteralpe, Loferer und Leoganger Steinberge, Kitzbüheler Alpen, Glemmtal, Oberpinzgauer Grasberge, Großvenedigergruppe Nord, Großvenedigergruppe Alpenhauptkamm, Glocknergruppe Nord, Glocknergruppe Alpenhauptkamm, Dientner Grasberge, Goldberggruppe Nord, Goldberggruppe Alpenhauptkamm, Tennengebirge, Gosaukamm, Pongauer Grasberge, Niedere Tauern Nord, Niedere Tauern Alpenhauptkamm, Niedere Tauern Süd, Ankogelgruppe, Muhr, Nockberge



on extremely steep grass-covered slopes, small-to-medium, isolated, below average snow depths

Risk of falling on often steel-hard surfaces

Avalanche danger is initially LOW. In extremely steep terrain on smooth ground (meadows, rocks, glaciers) isolated small-to-medium glide-snow avalanches can release. Cracks in the snowpack can indicate imminent danger, thus, they should be avoided.

Snowpack structure

Atop a varyingly shallow, very stable and often ground-deep moist snowpack which is raw and marked by dust from the Sahara on the surface, a few centimetres of fresh snow will fall without much wind impact.

Weather

On Thursday, poor visibility. Mountains in fog and clouds. Rainfall and snowfall. Snowfall level at 1500 m. Fresh snow: 2-10 cm. Northerly winds generally light to moderate. At 2000 m: -2 degrees; at 3000 m: -8 degrees.

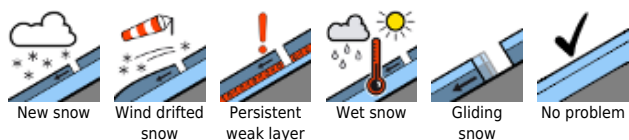
On Friday, reduced visibility from low lying cloud, rainfall and snowfall in repeated bouts. Snowfall level in the Northern Alps at 1000 m, in the Tauern and Nockberge at 1500 m, then descending during the daytime. In the afternoon in the Northern Alps, northerly winds at 40 km/hr. At 2000 m: -6 degrees; at 3000 m: -9 degrees.

Outlook

As a result of dropping temperatures, fresh snow and rising winds, avalanche danger on Friday will increase somewhat (snowdrift problem).

Translated by Jeffrey McCabe, www.creativtrans.com

Avalanche problems



Danger ratings



Expositions

