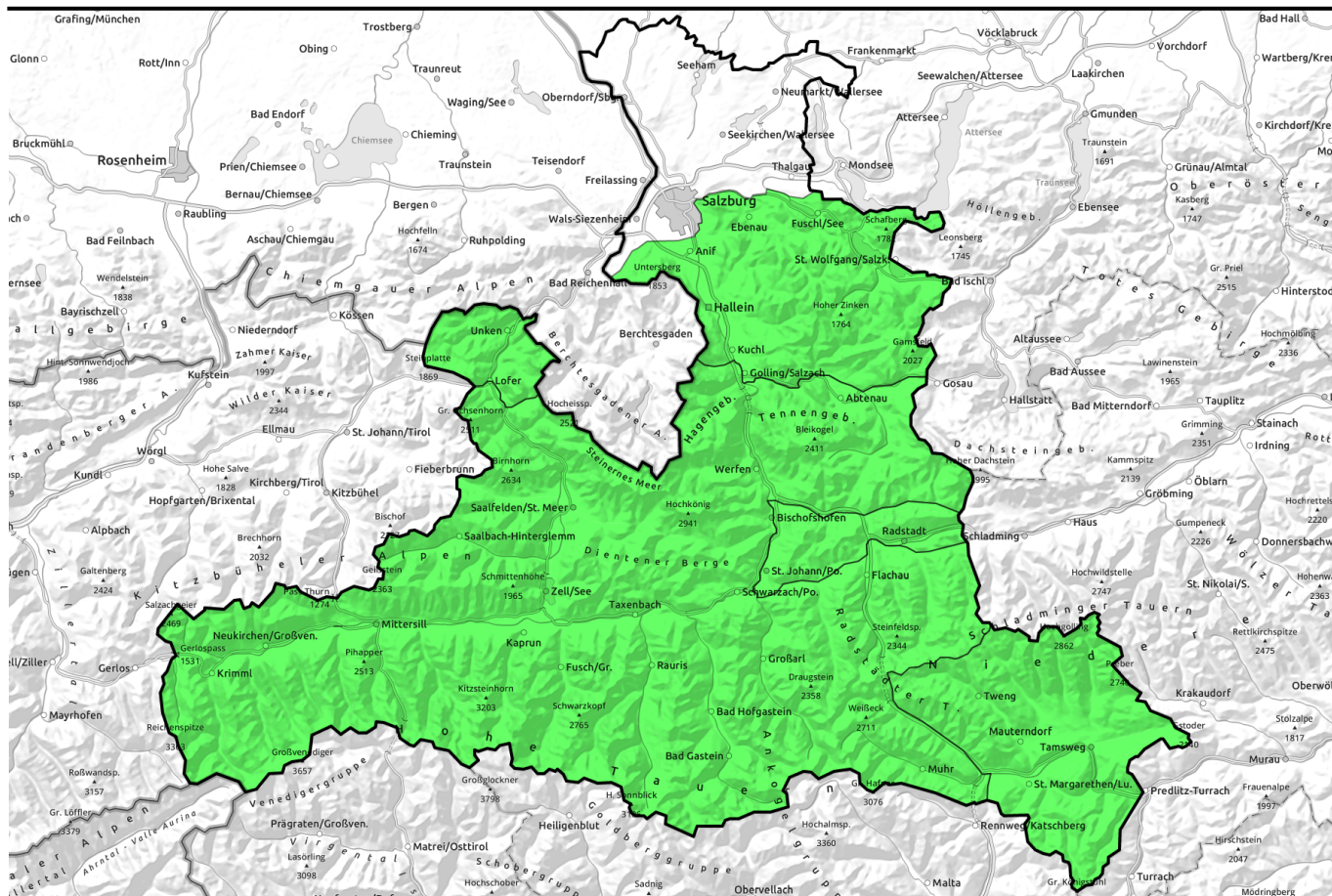


30.03.2022, morning



Few reserves of cold in the snow, minor precipitation in the afternoon



Nockberge, Untersbergstock, Osterhorngruppe, Gamsfeldgruppe, Chiemgauer Alpen, Heutal, Reiteralpe, Pongauer Grasberge, Niedere Tauern Süd



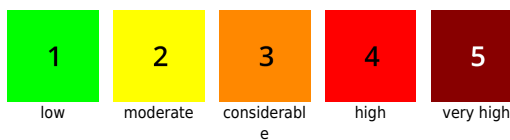
Kitzbüheler Alpen, Glemmtal, Oberpinzgauer Grasberge, Dientner Grasberge, Niedere Tauern Nord, Niedere Tauern Alpenhauptkamm, Goldberggruppe Nord, Steinernes Meer, Hochkönig, Hagengebirge, Göllstock, Loferer und Leoganger Steinberge, Tennengebirge, Gosaukamm, Glocknergruppe Nord, Großvenedigergruppe Alpenhauptkamm, Großvenedigergruppe Nord, Glocknergruppe Alpenhauptkamm, Goldberggruppe Alpenhauptkamm, Ankogelgruppe, Muhr



Avalanche problems



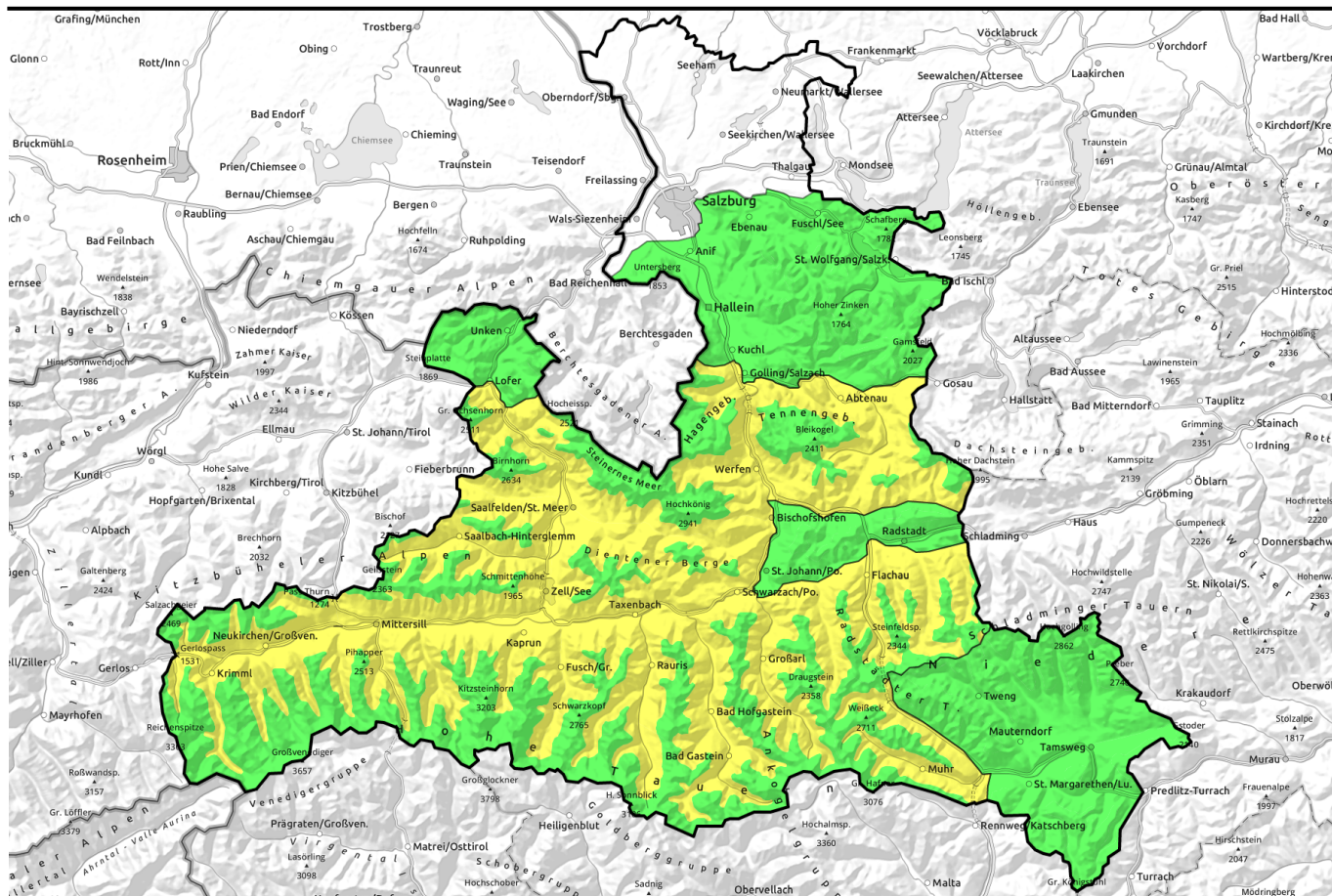
Danger ratings



Expositions



30.03.2022, afternoon



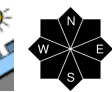
Wenig Kältereseerve im Schnee, am Nachmittag unergiebigere Niederschlag



Nockberge, Untersbergstock, Osterhorngruppe, Gamsfeldgruppe, Chiemgauer Alpen, Heutal, Reiteralpe, Pongauer Grasberge, Niedere Tauern Süd

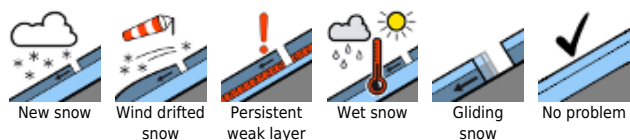


Kitzbüheler Alpen, Glemmtal, Oberpinzgauer Grasberge, Dientner Grasberge, Niedere Tauern Nord, Niedere Tauern Alpenhauptkamm, Goldberggruppe Nord, Steinernes Meer, Hochkönig, Hagengebirge, Göllstock, Loferer und Leoganger Steinberge, Tennengebirge, Gosaukamm, Glocknergruppe Nord, Großvenedigergruppe Alpenhauptkamm, Großvenedigergruppe Nord, Glocknergruppe Alpenhauptkamm, Goldberggruppe Alpenhauptkamm, Ankogelgruppe, Muhr

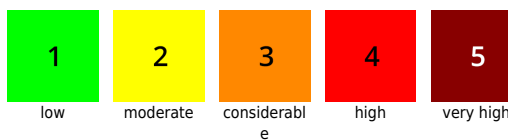


2000 m

Avalanche problems



Danger ratings

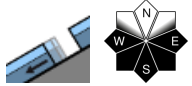


Expositions

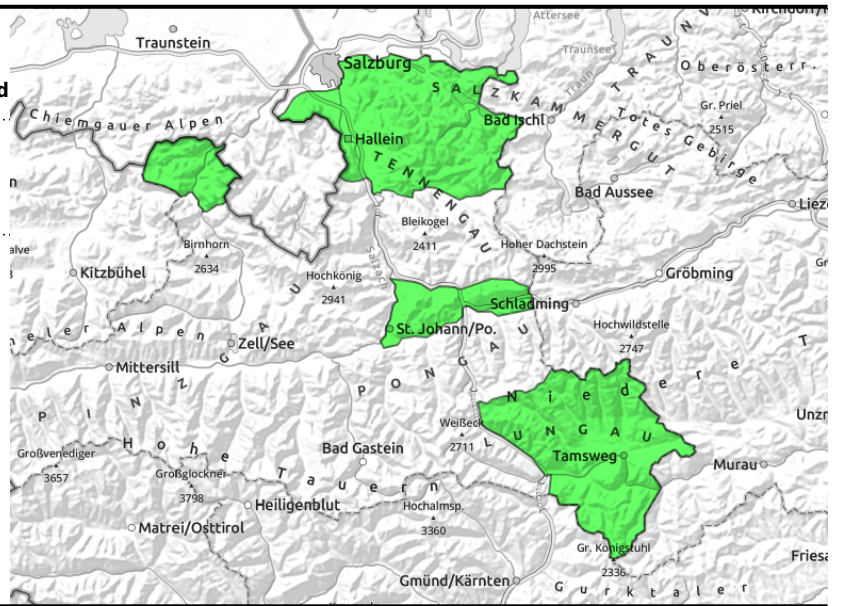


30.03.2022

Nockberge, Untersbergstock, Osterhorngruppe, Gamsfeldgruppe, Chiemgauer Alpen, Heutal, Reiteralpe, Pongauer Grasberge, Niedere Tauern Süd



on extremely steep grass-covered slopes, still very few, small-to-medium, below average snow depths



Often merely breakable melt-freeze crusts

Avalanche danger is initially LOW, then rises during the day yet stays in this danger level. Isolated, seldom glide snow avalanches (small-to-medium) are possible at any time of day or night in very steep grass-covered terrain, though the likelihood is greatest in afternoon and evening. Heed glide cracks.

Snowpack structure

Following a night of overcast skies the cold reserves in the snowpack are minimal, the melt-freeze crust usually breakable. During the daytime the snow softens amid diffuse radiation, rainfall in the afternoon can further weaken the snowpack at low and intermediate altitudes. On steep grass-covered slopes the entire snowpack is gliding over the ground.

Weather

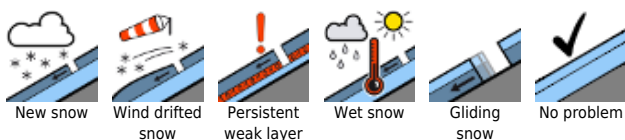
Skies on Tuesday night will be overcast, but dry. On Wednesday, adequate visibility, the peaks will often be veiled in fog. In the afternoon a bit of rainfall, and minor snowfall above 1600-2000 m. In the Northern Alps, light winds; on the Main Alpine Ridge and in the Nockberge often brisk southerly winds. At 1500 m: 2-5 degrees; at 2000 m: 0 degrees.

On Thursday, low-lying clouds will reduce visibility. Rainfall and snowfall repeatedly, the snowfall level between 1200 and 1600 m. The northerly winds will be light, along the Tauern brisker in the afternoon. At 1500 m: -1 to +2 degrees; at 2000 m: -2 degrees.

Outlook

Independent of lower temperatures, isolated glide-snow avalanches are possible on Thursday. The small amount of fresh snow does not change the avalanche situation at high altitudes.

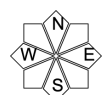
Avalanche problems



Danger ratings

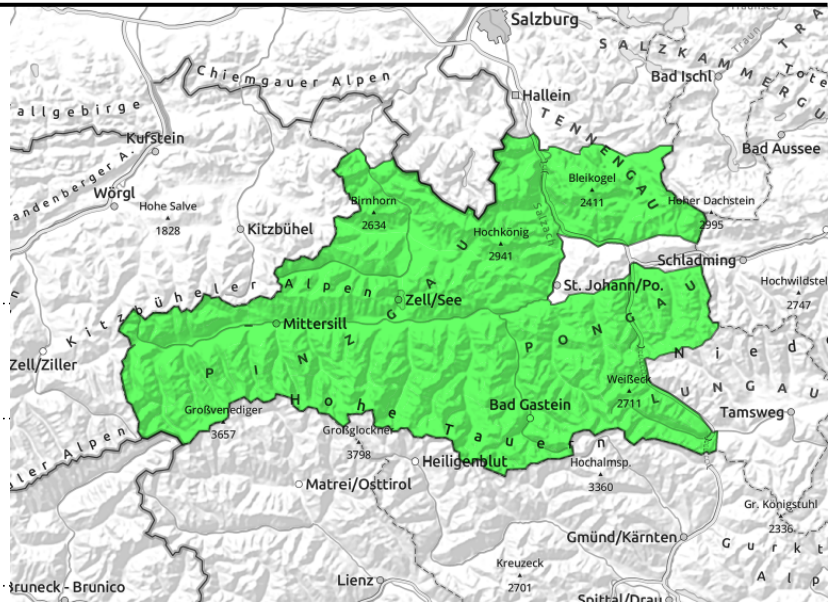


Expositions



30.03.2022, morning

Kitzbüheler Alpen, Glemmtal, Oberpinzgauer Grasberge, Dientner Grasberge, Niedere Tauern Nord, Niedere Tauern Alpenhauptkamm, Goldberggruppe Nord, Steinernes Meer, Hochkönig, Hagengebirge, Göllstock, Loferer und Leoganger Steinberge, Tennengebirge, Gosaukamm, Glocknergruppe Nord, Großvenedigergruppe Alpenhauptkamm, Großvenedigergruppe Nord, Glocknergruppe Alpenhauptkamm, Goldberggruppe Alpenhauptkamm, Ankogelgruppe, Muhr



on extremely steep grass-covered slopes, still few releases, but then medium-to-large, below 2400m



as rain sets in, below 2000m

Slight daytime cycle, some rainfall possible in the afternoon

Avalanche danger in the morning is LOW at all altitudes, then increases due to loss of snowpack firmness to MODERATE below 2000m. Glide-snow avalanches (medium-to-isolated-large sized) in very steep grass-covered terrain are possible at any time of day or night, though the likelihood is greatest in afternoon and in evening. Heed glide cracks. Also in case of additional loading by winter sports enthusiasts, the superficially softened snowpack can be triggered as a loose-snow avalanche in the afternoon.

Snowpack structure

Following a night of overcast skies the cold reserves in the snowpack are minimal, the melt-freeze crust usually breakable. During the daytime the snow softens amid diffuse radiation, rainfall in the afternoon can further weaken the snowpack at low and intermediate altitudes. On steep grass-covered slopes the entire snowpack is gliding over the ground.

Weather

Skies on Tuesday night will be overcast, but dry. On Wednesday, adequate visibility, the peaks will often be veiled in fog. In the afternoon a bit of rainfall, and minor snowfall above 1600-2000 m. In the Northern Alps, light winds; on the Main Alpine Ridge and in the Nockberge often brisk southerly winds. At 1500 m: 2-5 degrees; at 2000 m: 0 degrees; at 3000 m: -6 degrees.

On Thursday, low-lying clouds will reduce visibility. Rainfall and snowfall repeatedly, the snowfall level between 1200 and 1600 m. The northerly winds will be light, along the Tauern brisker in the afternoon. At 1500 m: -1 to +2 degrees; at 2000 m: -2 degrees; at 3000 m: -8 degrees.

Outlook

Independent of lower temperatures, isolated glide-snow avalanches are possible on Thursday. The small amount of fresh snow does not change the avalanche situation at high altitudes.

Avalanche problems



New snow



Wind drifted snow



Persistent weak layer



Wet snow

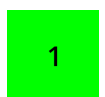


Gliding snow



No problem

Danger ratings



1
low



2
moderate



3
considerable



4
high



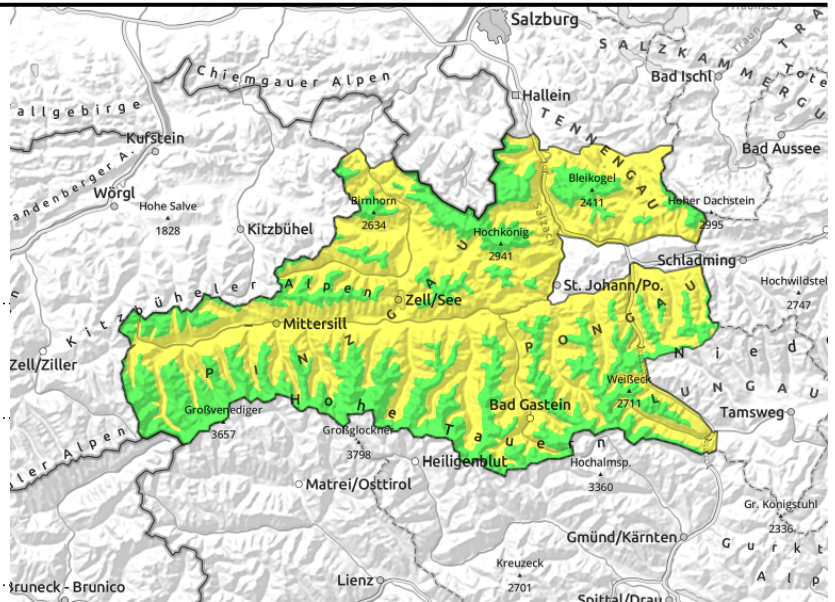
5
very high



Expositions

30.03.2022, afternoon

Kitzbüheler Alpen, Glemmtal, Oberpinzgauer Grasberge, Dientner Grasberge, Niedere Tauern Nord, Niedere Tauern Alpenhauptkamm, Goldberggruppe Nord, Steinernes Meer, Hochkönig, Hagengebirge, Göllstock, Loferer und Leoganger Steinberge, Tennengebirge, Gosaukamm, Glocknergruppe Nord, Großvenedigergruppe Alpenhauptkamm, Großvenedigergruppe Nord, Glocknergruppe Alpenhauptkamm, Goldberggruppe Alpenhauptkamm, Ankogelgruppe, Muhr



on extremely steep grass-covered slopes, still few releases, but then medium-to-large, below 2400m



as rain sets in, below 2000m

Slight daytime cycle, some rainfall possible in the afternoon

Avalanche danger in the morning is LOW at all altitudes, then increases due to loss of snowpack firmness to MODERATE below 2000m. Glide-snow avalanches (medium-to-isolated-large sized) in very steep grass-covered terrain are possible at any time of day or night, though the likelihood is greatest in afternoon and in evening. Heed glide cracks. Also in case of additional loading by winter sports enthusiasts, the superficially softened snowpack can be triggered as a loose-snow avalanche in the afternoon.

Snowpack structure

Following a night of overcast skies the cold reserves in the snowpack are minimal, the melt-freeze crust usually breakable. During the daytime the snow softens amid diffuse radiation, rainfall in the afternoon can further weaken the snowpack at low and intermediate altitudes. On steep grass-covered slopes the entire snowpack is gliding over the ground.

Weather

Skies on Tuesday night will be overcast, but dry. On Wednesday, adequate visibility, the peaks will often be veiled in fog. In the afternoon a bit of rainfall, and minor snowfall above 1600-2000 m. In the Northern Alps, light winds; on the Main Alpine Ridge and in the Nockberge often brisk southerly winds. At 1500 m: 2-5 degrees; at 2000 m: 0 degrees; at 3000 m: -6 degrees.

On Thursday, low-lying clouds will reduce visibility. Rainfall and snowfall repeatedly, the snowfall level between 1200 and 1600 m. The northerly winds will be light, along the Tauern brisker in the afternoon. At 1500 m: -1 to +2 degrees; at 2000 m: -2 degrees; at 3000 m: -8 degrees.

Outlook

Independent of lower temperatures, isolated glide-snow avalanches are possible on Thursday. The small amount of fresh snow does not change the avalanche situation at high altitudes.

Translated by Jeffrey McCabe, www.creativtrans.com

Avalanche problems



Danger ratings



Expositions

