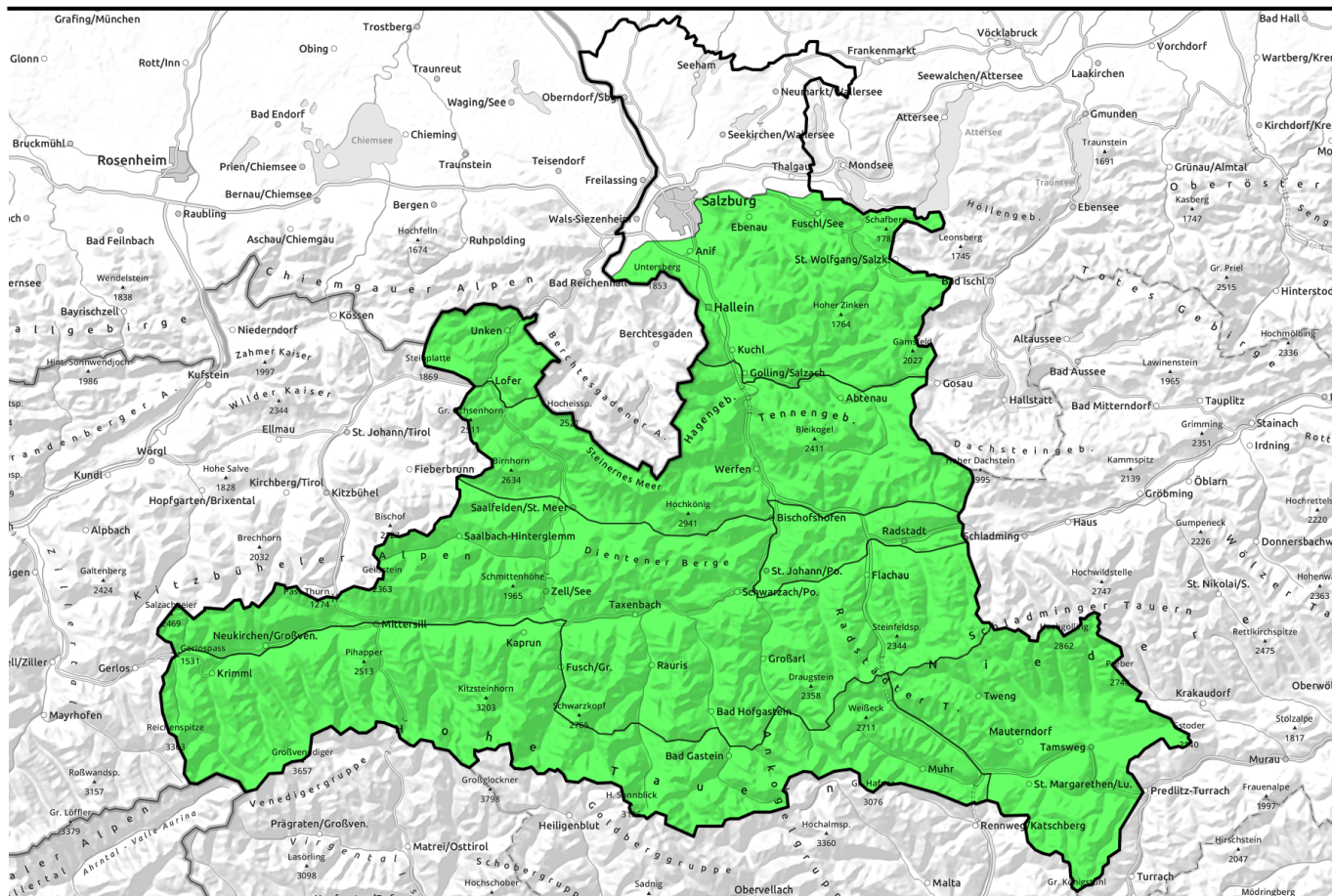


29.03.2022, morning



Springtime conditions, daytime danger cycle rising to MODERATE



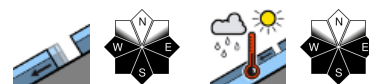
Nockberge, Untersbergstock, Osterhorngruppe, Gamsfeldgruppe, Chiemgauer Alpen, Heutal, Reiteralpe, Pongauer Grasberge, Niedere Tauern Süd



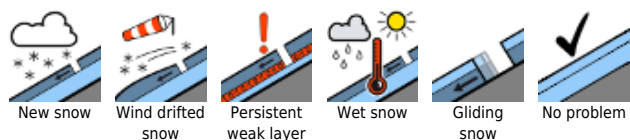
Kitzbüheler Alpen, Glemmtal, Oberpinzgauer Grasberge, Dientner Grasberge, Niedere Tauern Nord, Niedere Tauern Alpenhauptkamm, Goldberggruppe Nord



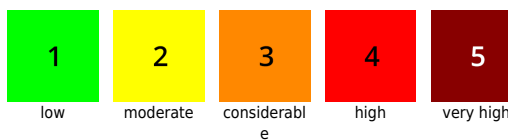
Tennengebirge, Gosaukamm, Steinernes Meer, Hochkönig, Hagengebirge, Göllstock, Loferer und Leoganger Steinberge, Großvenedigergruppe Nord, Großvenedigergruppe Alpenhauptkamm, Glocknergruppe Nord, Glocknergruppe Alpenhauptkamm, Goldberggruppe Alpenhauptkamm, Ankogelgruppe, Muhr



Avalanche problems



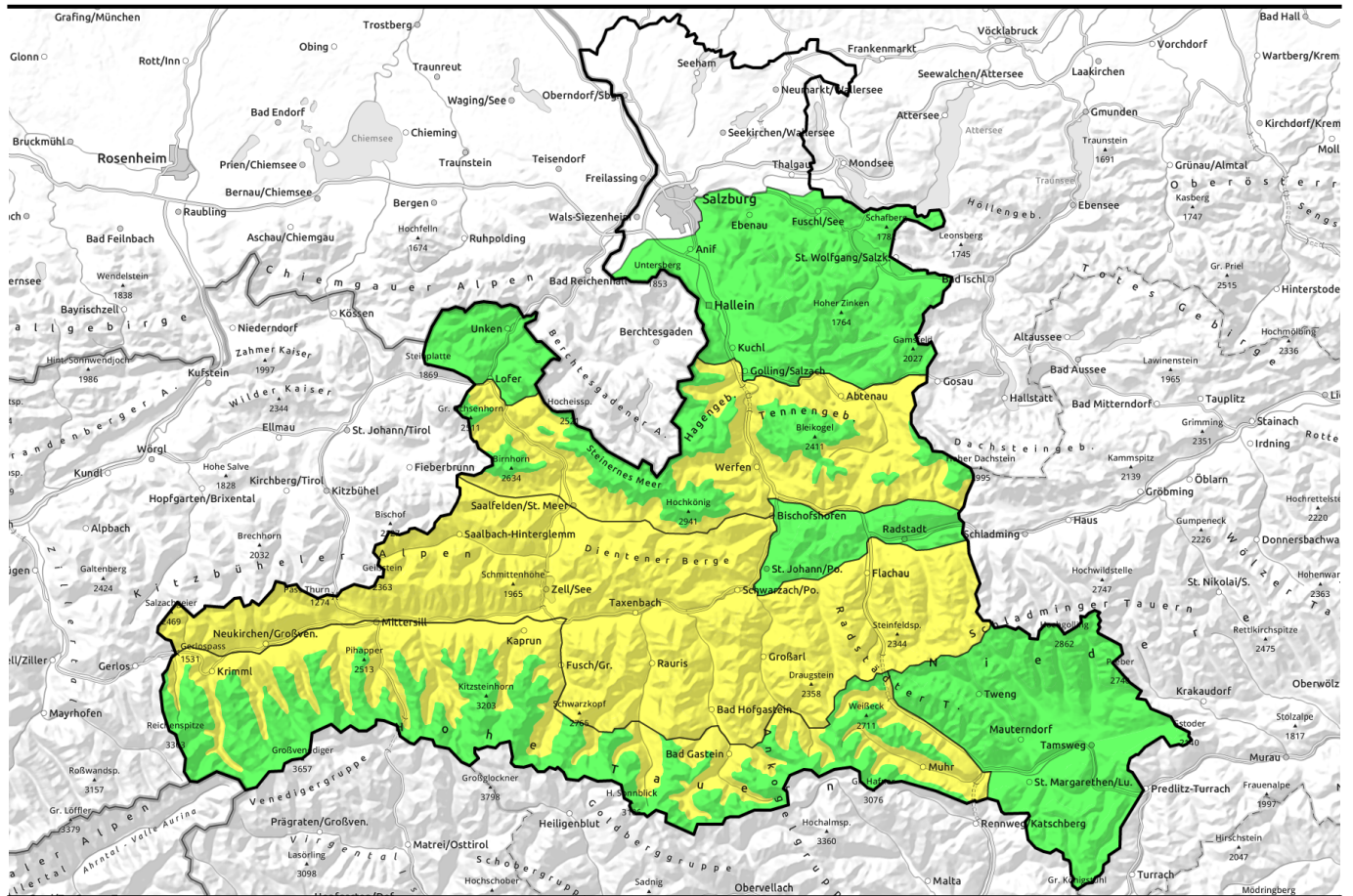
Danger ratings



Expositions



29.03.2022, afternoon



Noch unverändert: Frühlingsverhältnisse, Tagesgang auf MÄßIG



Nockberge, Untersbergstock, Osterhorngruppe, Gamsfeldgruppe, Chiemgauer Alpen, Heutal, Reiteralpe, Pongauer Grasberge, Niedere Tauern Süd



Kitzbüheler Alpen, Glemmtal, Oberpinzgauer Grasberge, Dientner Grasberge, Niedere Tauern Nord, Niedere Tauern Alpenhauptkamm, Goldberggruppe Nord

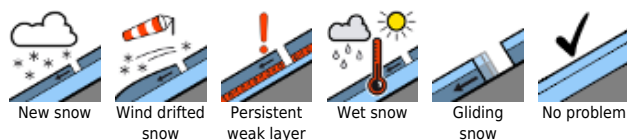


Tennengebirge, Gosaukamm, Steinernes Meer, Hochkönig, Hagengebirge, Göllstock, Loferer und Leoganger Steinberge, Großvenedigergruppe Nord, Großvenedigergruppe Alpenhauptkamm, Glocknergruppe Nord, Glocknergruppe Alpenhauptkamm, Goldberggruppe Alpenhauptkamm, Ankogelgruppe, Muhr

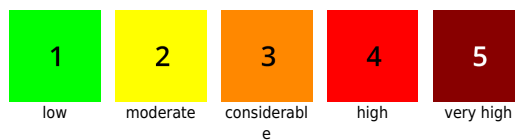


2400 m

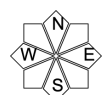
Avalanche problems



Danger ratings

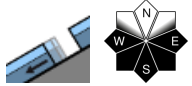


Expositions

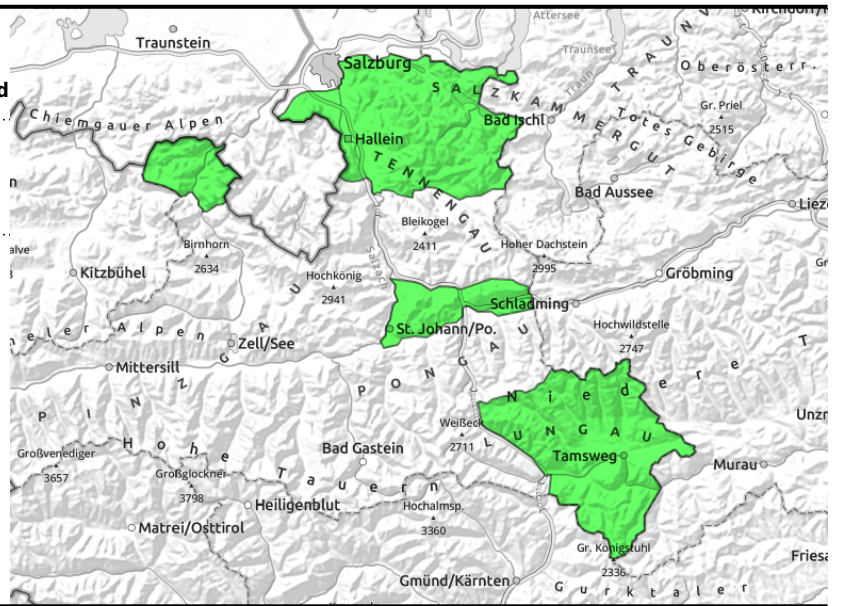


29.03.2022

Nockberge, Untersbergstock, Osterhorngruppe, Gamsfeldgruppe, Chiemgauer Alpen, Heutal, Reiteralpe, Pongauer Grasberge, Niedere Tauern Süd



on extremely steep grass-covered slopes, still very few, small-to-medium, below average snow depths



Initially stable firn snow, softening in afternoon, low danger

Avalanche danger is initially LOW, then rises during the day yet stays in this danger level. Isolated, seldom glide snow avalanches (small-to-medium) are possible at any time of day or night in very steep grass-covered terrain, though the likelihood is greatest in afternoon and evening. Heed glide cracks.

Snowpack structure

Initially a hardened melt-freeze crust dominates, often hard-as-steel and icy. During the course of the day it softens at varying speed depending on aspect and gradient, and to varying depth. On sunny slopes it becomes slushy and fracturing down to the ground is possible in places.

Weather

Skies on Monday night will be clear.

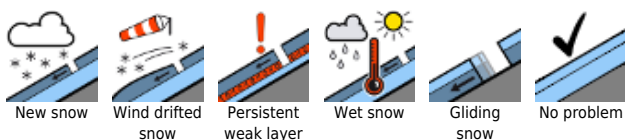
On Tuesday, heavy cloudbanks will move in above summit level and create diffuse light conditions. Sunshine will be rare, but it will remain dry. Winds will be light. At 2000 m: 3 degrees.

On Wednesday, poorer visibility, the peaks will often be shrouded in fog, a bit of rainfall is possible, above 1800 m snowfall. Visibility in the furthestmost northern regions will be better. Mostly light winds, brisk southerly winds in the morning. At 2000m: 0 degrees; at 3000 m: -7 degrees.

Outlook

On Wednesday/Thursday the situation will change fundamentally: temperatures dropping, also fresh snow is expected, step by step.

Avalanche problems



Danger ratings

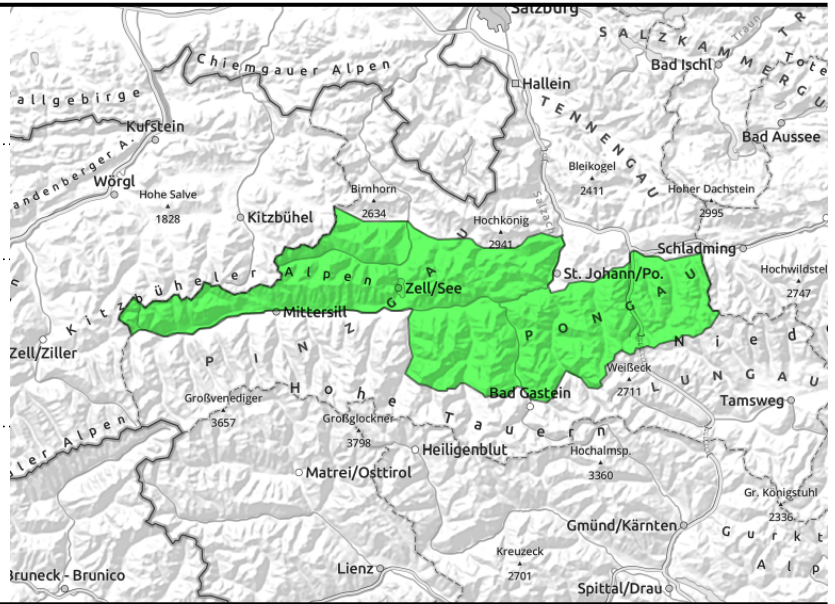


Expositions



29.03.2022, morning

Kitzbüheler Alpen, Glemmtal, Oberpinzgauer Grasberge, Dientner Grasberge, Niedere Tauern Nord, Niedere Tauern Alpenhauptkamm, Goldberggruppe Nord



on extremely steep grass-covered slopes, still few releases but they can grow large in isolated cases



melt-freeze crust turns varying quickly to firm depending on aspect/altitude, thereafter heed moistening

Top springtime conditions in early hours, thereafter heed daytime cycle

Avalanche danger in the morning is LOW at all altitudes, then increases due to loss of snowpack firmness to MODERATE.

On sun-drenched steep slopes from late morning, naturally triggered or skier-triggered small-to-medium wet loose-snow avalanches are possible, mostly in extremely steep terrain.

Glide-snow avalanches (medium-to-isolated-large sized) in very steep grass-covered terrain are possible at any time of day or night, though the likelihood is greatest in afternoon and in evening. Heed glide cracks.

Snowpack structure

The snowpack is capable of bearing loads to start with. During the course of the day it softens at varying speed depending on aspect and gradient, and to varying depth. On sunny slopes it becomes slushy and fracturing down to the ground is possible in places.

Weather

Skies on Monday night will be clear.

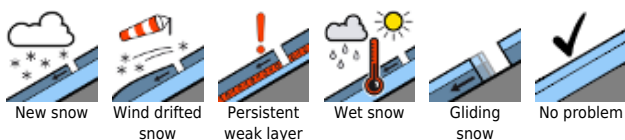
On Tuesday, heavy cloudbanks will move in above summit level and create diffuse light conditions. Sunshine will be rare, but it will remain dry. Winds will be light. At 2000 m: 3 degrees.

On Wednesday, poorer visibility, the peaks will often be shrouded in fog, a bit of rainfall is possible, above 1800 m snowfall. Visibility in the furthestmost northern regions will be better. Mostly light winds, brisk southerly winds in the morning. At 2000m: 0 degrees; at 3000 m: -7 degrees.

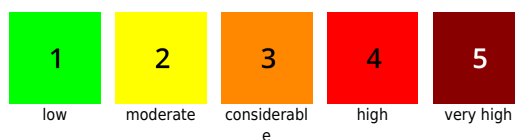
Outlook

On Wednesday/Thursday the situation will change fundamentally: temperatures dropping, also fresh snow is expected, step by step.

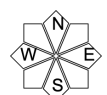
Avalanche problems



Danger ratings

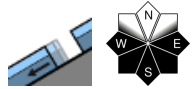
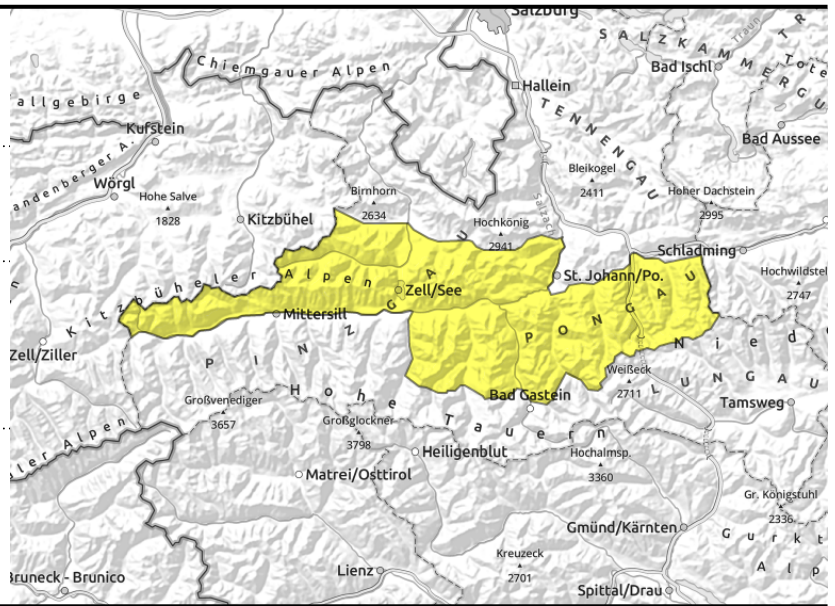


Expositions

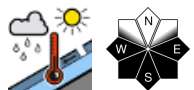


29.03.2022, afternoon

Kitzbüheler Alpen, Glemmtal, Oberpinzgauer Grasberge, Dientner Grasberge, Niedere Tauern Nord, Niedere Tauern Alpenhauptkamm, Goldberggruppe Nord



on extremely steep grass-covered slopes, still few releases but they can grow large in isolated cases



melt-freeze crust turns varying quickly to firm depending on aspect/altitude, thereafter heed moistening

Top springtime conditions in early hours, thereafter heed daytime cycle

Avalanche danger in the morning is LOW at all altitudes, then increases due to loss of snowpack firmness to MODERATE.

On sun-drenched steep slopes from late morning, naturally triggered or skier-triggered small-to-medium wet loose-snow avalanches are possible, mostly in extremely steep terrain.

Glide-snow avalanches (medium-to-isolated-large sized) in very steep grass-covered terrain are possible at any time of day or night, though the likelihood is greatest in afternoon and in evening. Heed glide cracks.

Snowpack structure

The snowpack is capable of bearing loads to start with. During the course of the day it softens at varying speed depending on aspect and gradient, and to varying depth. On sunny slopes it becomes slushy and fracturing down to the ground is possible in places.

Weather

Skies on Monday night will be clear.

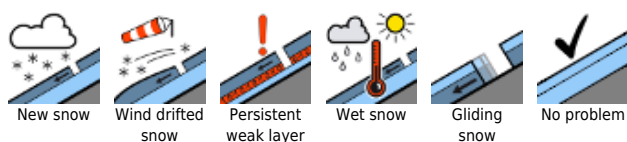
On Tuesday, heavy cloudbanks will move in above summit level and create diffuse light conditions. Sunshine will be rare, but it will remain dry. Winds will be light. At 2000 m: 3 degrees.

On Wednesday, poorer visibility, the peaks will often be shrouded in fog, a bit of rainfall is possible, above 1800 m snowfall. Visibility in the furthestmost northern regions will be better. Mostly light winds, brisk southerly winds in the morning. At 2000m: 0 degrees; at 3000 m: -7 degrees.

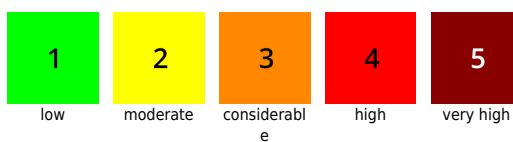
Outlook

On Wednesday/Thursday the situation will change fundamentally: temperatures dropping, also fresh snow is expected, step by step.

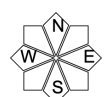
Avalanche problems



Danger ratings

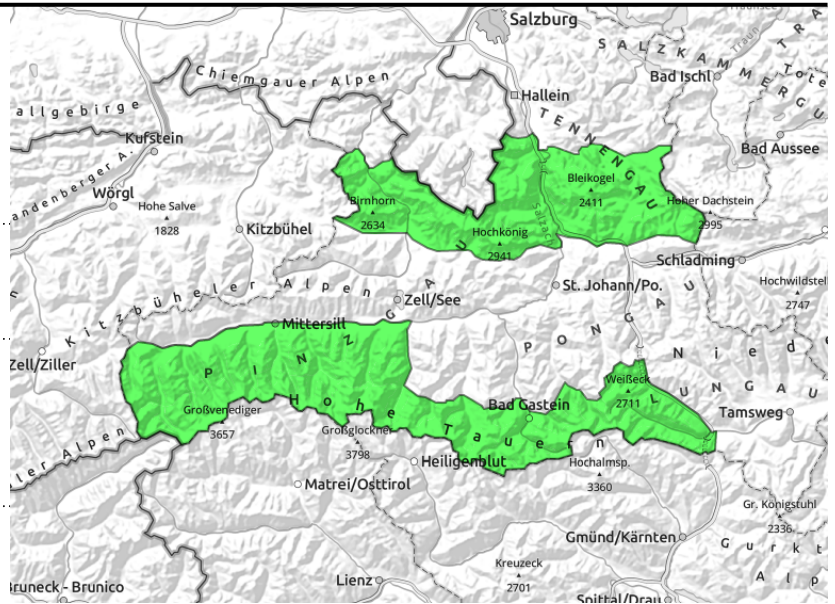


Expositions



29.03.2022, morning

Tennengebirge, Gosaukamm, Steinernes Meer, Hochkönig, Hagengebirge, Göllstock, Loferer und Leoganger Steinberge, Großvenedigergruppe Nord, Großvenedigergruppe Alpenhauptkamm, Glocknergruppe Nord, Glocknergruppe Alpenhauptkamm, Goldberggruppe Alpenhauptkamm, Ankogelgruppe, Muhr



on extremely steep grass-covered slopes, still few releases, but then medium-to-large, below 2400m



melt-freeze crust turns to firn depending on aspect/altitude, thereafter heed moistening, below 2400m

Top springtime conditions in early hours, daytime cycle below 2400m

Avalanche danger in the morning is LOW at all altitudes, then increases due to loss of snowpack firmness to MODERATE below 2400m.

On sun-drenched steep slopes from late morning, naturally triggered or skier-triggered small-to-medium wet loose-snow avalanches are possible, mostly in extremely steep terrain.

Glide-snow avalanches (medium-to-isolated-large sized) in very steep grass-covered terrain are possible at any time of day or night, though the likelihood is greatest in afternoon and in evening. Heed glide cracks.

Snowpack structure

The snowpack is capable of bearing loads to start with. During the course of the day it softens at varying speed depending on aspect and gradient, and to varying depth. On sunny slopes it becomes slushy and fracturing down to the ground is possible in places.

Weather

Skies on Monday night will be clear.

On Tuesday, heavy cloudbanks will move in above summit level and create diffuse light conditions. Sunshine will be rare, but it will remain dry. Winds will be light. At 2000 m: 3 degrees.

On Wednesday, poorer visibility, the peaks will often be shrouded in fog, a bit of rainfall is possible, above 1800 m snowfall. Visibility in the furthestmost northern regions will be better. Mostly light winds, brisk southerly winds in the morning. At 2000m: 0 degrees; at 3000 m: -7 degrees.

Outlook

On Wednesday/Thursday the situation will change fundamentally: temperatures dropping, also fresh snow is expected, step by step.

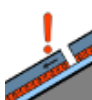
Avalanche problems



New snow



Wind drifted snow



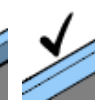
Persistent weak layer



Wet snow

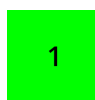


Gliding snow



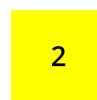
No problem

Danger ratings



1

low



2

moderate



3

considerable



4

high



5

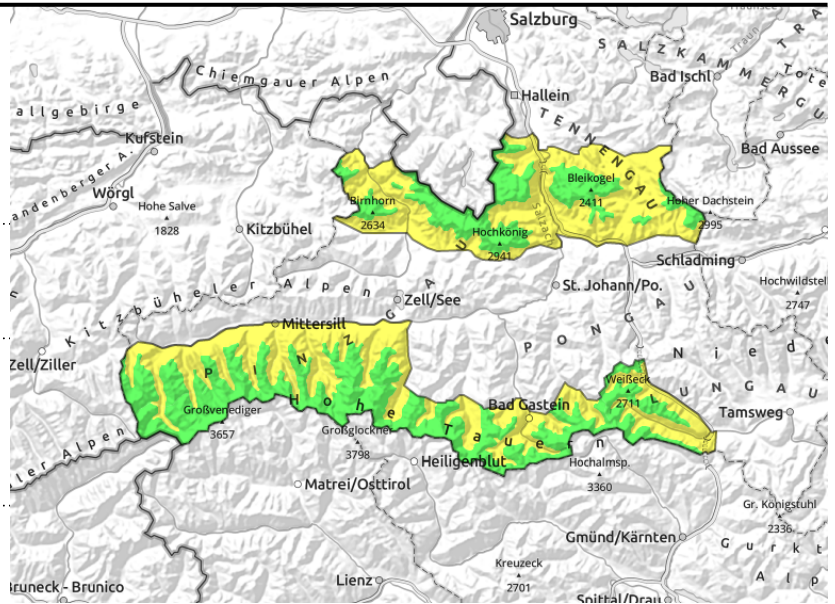
very high

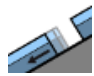

Expositions





29.03.2022, afternoon

Tennengebirge, Gosaukamm, Steinernes Meer, Hochkönig, Hagengebirge, Göllstock, Loferer und Leoganger Steinberge, Großvenedigergruppe Nord, Großvenedigergruppe Alpenhauptkamm, Glocknergruppe Nord, Glocknergruppe Alpenhauptkamm, Goldberggruppe Alpenhauptkamm, Ankogelgruppe, Muhr



  on extremely steep grass-covered slopes, still few releases, but then medium-to-large, below 2400m

  melt-freeze crust turns to firn depending on aspect/altitude, thereafter heed moistening, below 2400m

Top springtime conditions in early hours, daytime cycle below 2400m

Avalanche danger in the morning is LOW at all altitudes, then increases due to loss of snowpack firmness to MODERATE below 2400m.

On sun-drenched steep slopes from late morning, naturally triggered or skier-triggered small-to-medium wet loose-snow avalanches are possible, mostly in extremely steep terrain.

Glide-snow avalanches (medium-to-isolated-large sized) in very steep grass-covered terrain are possible at any time of day or night, though the likelihood is greatest in afternoon and in evening. Heed glide cracks.

Snowpack structure

The snowpack is capable of bearing loads to start with. During the course of the day it softens at varying speed depending on aspect and gradient, and to varying depth. On sunny slopes it becomes slushy and fracturing down to the ground is possible in places.

Weather

Skies on Monday night will be clear.

On Tuesday, heavy cloudbanks will move in above summit level and create diffuse light conditions. Sunshine will be rare, but it will remain dry. Winds will be light. At 2000 m: 3 degrees.

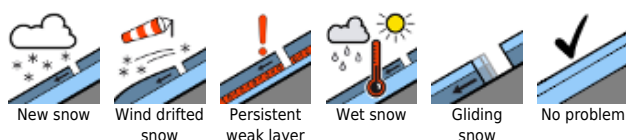
On Wednesday, poorer visibility, the peaks will often be shrouded in fog, a bit of rainfall is possible, above 1800 m snowfall. Visibility in the furthestmost northern regions will be better. Mostly light winds, brisk southerly winds in the morning. At 2000m: 0 degrees; at 3000 m: -7 degrees.

Outlook

On Wednesday/Thursday the situation will change fundamentally: temperatures dropping, also fresh snow is expected, step by step.

Translated by Jeffrey McCabe, www.creativtrans.com

Avalanche problems



Danger ratings



Expositions

