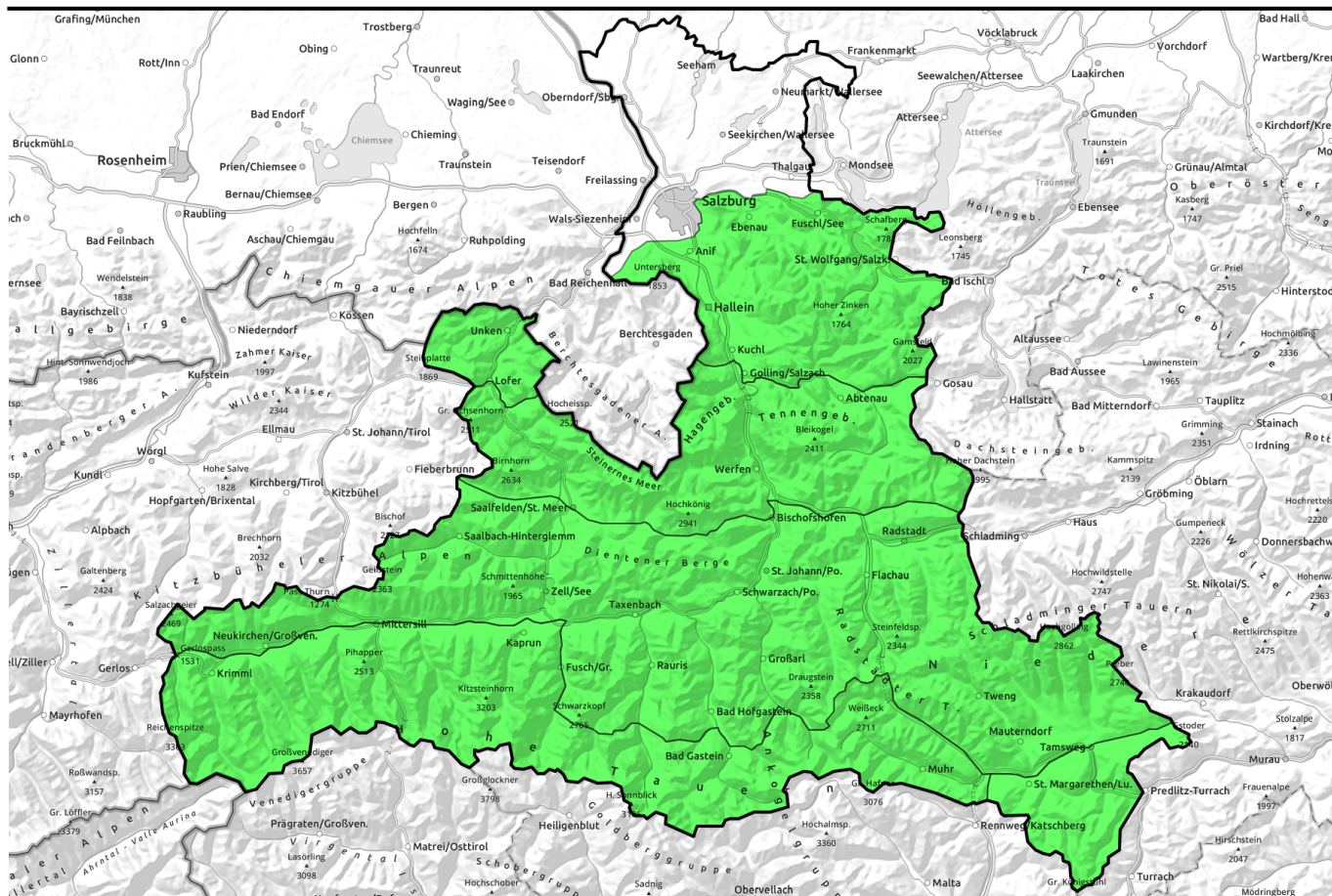


28.03.2022, morning



Springtime conditions, daytime danger cycle rising to MODERATE

- Nockberge, Untersbergstock, Osterhorngruppe, Gamsfeldgruppe, Chiemgauer Alpen, Heutal, Reiteralpe
- Kitzbüheler Alpen, Glemmtal, Oberpinzgauer Grasberge, Dientner Grasberge, Pongauer Grasberge, Niedere Tauern Nord, Niedere Tauern Alpenhauptkamm, Goldberggruppe Nord, Niedere Tauern Süd
- Tennengebirge, Gosaukamm, Steinernes Meer, Hochkönig, Hagengebirge, Göllstock, Loferer und Leoganger Steinberge, Großvenedigergruppe Nord, Großvenedigergruppe Alpenhauptkamm, Glocknergruppe Nord, Glocknergruppe Alpenhauptkamm, Goldberggruppe Alpenhauptkamm, Ankogelgruppe, Muhr

Avalanche problems



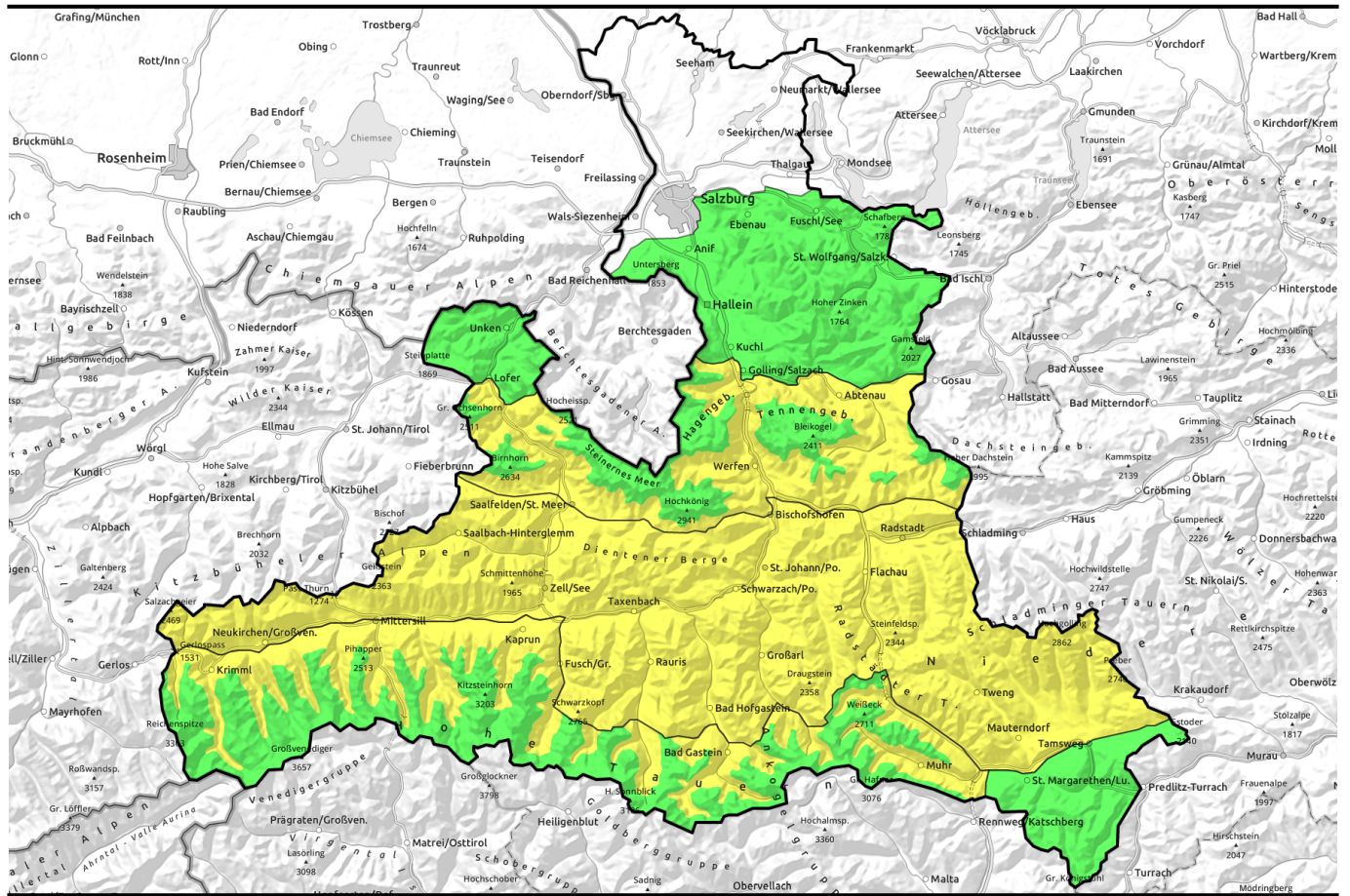
Danger ratings



Expositions



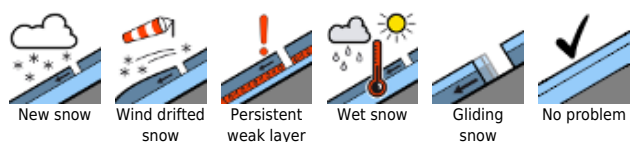
28.03.2022, afternoon



Frühlingsverhältnisse, Tagesgang auf MÄßIG

	<p>Nockberge, Untersbergstock, Osterhorngruppe, Gamsfeldgruppe, Chiemgauer Alpen, Heutal, Reiteralpe</p>	
	<p>Kitzbüheler Alpen, Glemmtal, Oberpinzgauer Grasberge, Dientner Grasberge, Pongauer Grasberge, Niedere Tauern Nord, Niedere Tauern Alpenhauptkamm, Goldberggruppe Nord, Niedere Tauern Süd</p>	
 2400 m	<p>Tennengebirge, Gosaukamm, Steinernes Meer, Hochkönig, Hagengebirge, Göllstock, Loferer und Leoganger Steinberge, Großvenedigergruppe Nord, Großvenedigergruppe Alpenhauptkamm, Glocknergruppe Nord, Glocknergruppe Alpenhauptkamm, Goldberggruppe Alpenhauptkamm, Ankogelgruppe, Muhr</p>	

Avalanche problems



Danger ratings

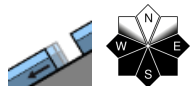


Expositions

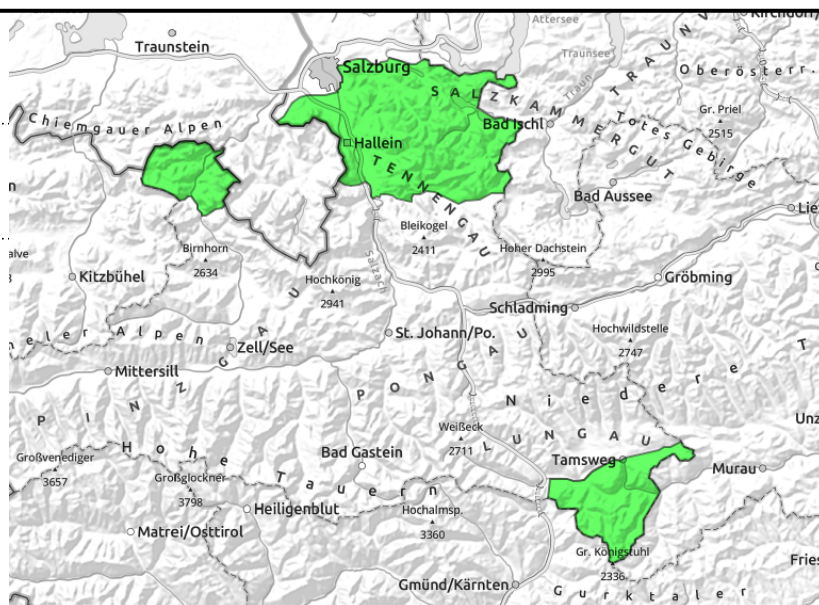


28.03.2022

Nockberge, Untersbergstock, Osterhorngruppe, Gamsfeldgruppe, Chiemgauer Alpen, Heutal, Reiteralpe



on extremely steep grass-covered slopes, still very few, small-to-medium, below average snow depths



Snow now softens also on north-facing slopes

Avalanche danger is initially LOW, then rises during the day yet stays in this danger level. Isolated, seldom glide snow avalanches (small-to-medium) are possible at any time of day or night in very steep grass-covered terrain, though the likelihood is greatest in afternoon and evening. Heed glide cracks.

Snowpack structure

Initially a hardened melt-freeze crust dominates, often hard-as-steel and icy. During the course of the day it softens at varying speed depending on aspect and gradient, and to varying depth. On sunny slopes it becomes slushy and fracturing down to the ground is possible in places.

Weather

On Monday, unimpaired sunshine in the morning. In the afternoon, some convective cloud build-up, the peaks will remain free. Winds will be blowing at moderate strength from northerly directions. At 2000 m: 4 degrees.

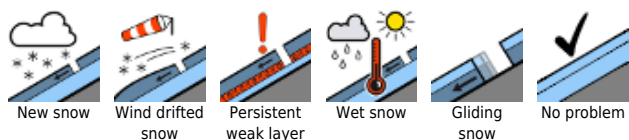
Nocturnal skies on Monday night will be clear.

On Tuesday, increasingly heavy cloud cover will move in over the summits, creating diffuse light conditions. Sunshine will be rare. It will remain dry for the most part. Winds will remain light. At 2000 m: 3 degrees.

Outlook

Little change, although clouds will pass through and delay transformation to firn snow.

Avalanche problems



Danger ratings

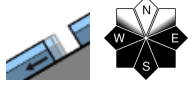
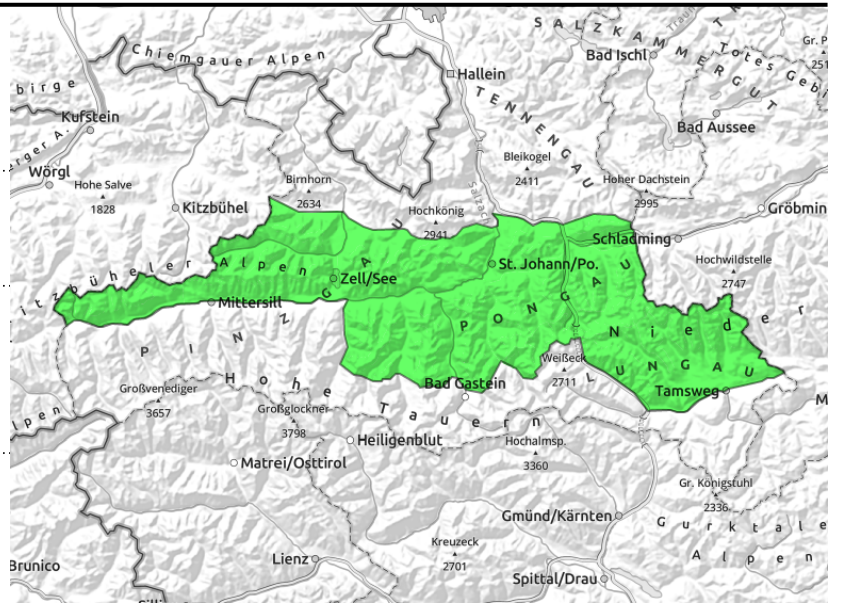


Expositions



28.03.2022, morning

Kitzbüheler Alpen, Glemmtal, Oberpinzgauer Grasberge, Dientner Grasberge, Pongauer Grasberge, Niedere Tauern Nord, Niedere Tauern Alpenhauptkamm, Goldberggruppe Nord, Niedere Tauern Süd



on extremely steep grass-covered slopes, still few releases but they can grow large in isolated cases



melt-freeze crust turns varyingly quickly to firn depending on aspect/altitude, thereafter heed moistening

Top springtime conditions in early hours, thereafter heed daytime cycle

Avalanche danger in the morning is LOW at all altitudes, then increases due to loss of snowpack firmness to MODERATE.

On sun-drenched steep slopes from late morning, naturally triggered or skier-triggered small-to-medium wet loose-snow avalanches are possible, mostly in extremely steep terrain.

Glide-snow avalanches (medium-to-isolated-large sized) in very steep grass-covered terrain are possible at any time of day or night, though the likelihood is greatest in afternoon and in evening. Heed glide cracks.

Snowpack structure

The snowpack is capable of bearing loads to start with. During the course of the day it softens at varying speed depending on aspect and gradient, and to varying depth. On sunny slopes it becomes slushy and fracturing down to the ground is possible in places.

Weather

On Monday, unimpaired sunshine in the morning. In the afternoon, some convective cloud build-up, the peaks will remain free. Winds will be blowing at moderate strength from northerly directions. At 2000 m: 4 degrees.

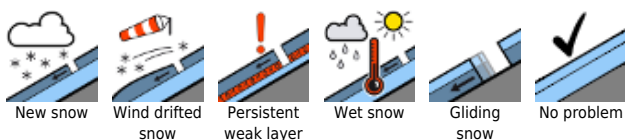
Nocturnal skies on Monday night will be clear.

On Tuesday, increasingly heavy cloud cover will move in over the summits, creating diffuse light conditions. Sunshine will be rare. It will remain dry for the most part. Winds will remain light. At 2000 m: 3 degrees.

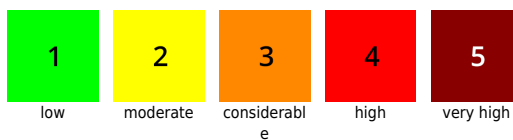
Outlook

Little change, although clouds will pass through and delay transformation to firn snow.

Avalanche problems



Danger ratings

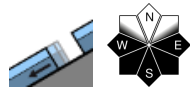
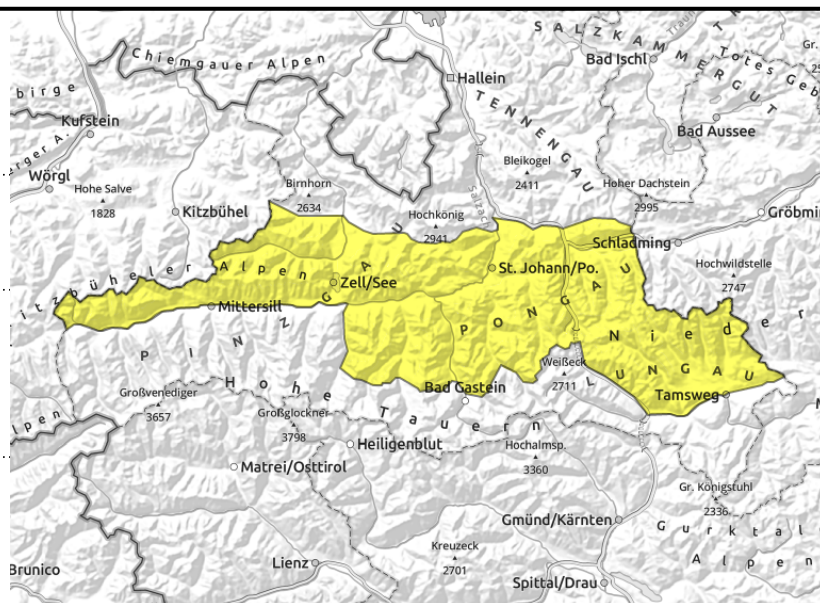


Expositions

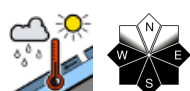


28.03.2022, afternoon

Kitzbüheler Alpen, Glemmtal, Oberpinzgauer Grasberge, Dientner Grasberge, Pongauer Grasberge, Niedere Tauern Nord, Niedere Tauern Alpenhauptkamm, Goldberggruppe Nord, Niedere Tauern Süd



on extremely steep grass-covered slopes, still few releases but they can grow large in isolated cases



melt-freeze crust turns varying quickly to firn depending on aspect/altitude, thereafter heed moistening

Top springtime conditions in early hours, thereafter heed daytime cycle

Avalanche danger in the morning is LOW at all altitudes, then increases due to loss of snowpack firmness to MODERATE.

On sun-drenched steep slopes from late morning, naturally triggered or skier-triggered small-to-medium wet loose-snow avalanches are possible, mostly in extremely steep terrain.

Glide-snow avalanches (medium-to-isolated-large sized) in very steep grass-covered terrain are possible at any time of day or night, though the likelihood is greatest in afternoon and in evening. Heed glide cracks.

Snowpack structure

The snowpack is capable of bearing loads to start with. During the course of the day it softens at varying speed depending on aspect and gradient, and to varying depth. On sunny slopes it becomes slushy and fracturing down to the ground is possible in places.

Weather

On Monday, unimpaired sunshine in the morning. In the afternoon, some convective cloud build-up, the peaks will remain free. Winds will be blowing at moderate strength from northerly directions. At 2000 m: 4 degrees.

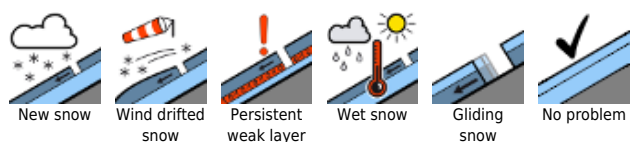
Nocturnal skies on Monday night will be clear.

On Tuesday, increasingly heavy cloud cover will move in over the summits, creating diffuse light conditions. Sunshine will be rare. It will remain dry for the most part. Winds will remain light. At 2000 m: 3 degrees.

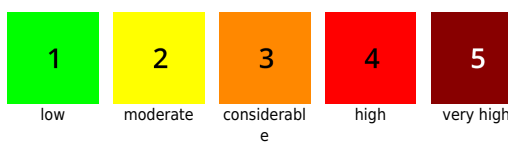
Outlook

Little change, although clouds will pass through and delay transformation to firn snow.

Avalanche problems



Danger ratings

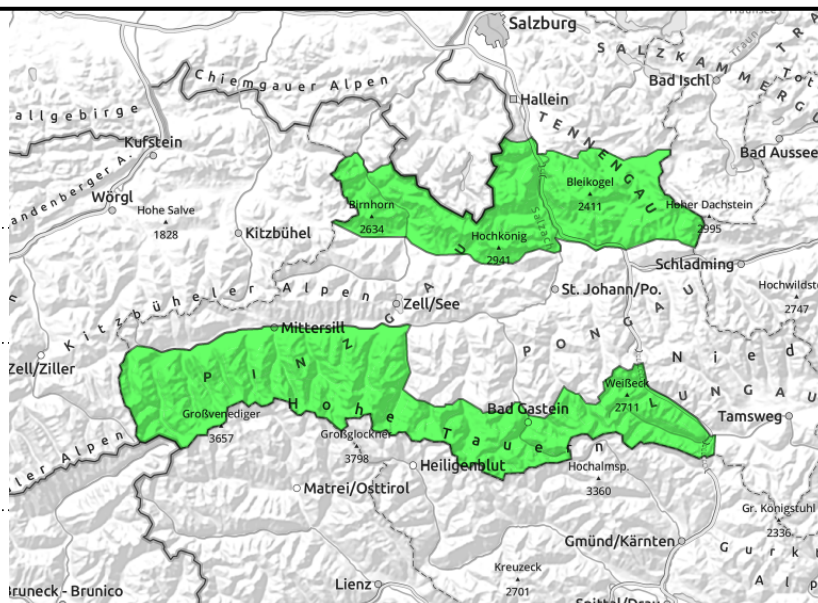


Expositions



28.03.2022, morning

Tennengebirge, Gosaukamm, Steinernes Meer, Hochkönig, Hagengebirge, Göllstock, Loferer und Leoganger Steinberge, Großvenedigergruppe Nord, Großvenedigergruppe Alpenhauptkamm, Glocknergruppe Nord, Glocknergruppe Alpenhauptkamm, Goldberggruppe Alpenhauptkamm, Ankogelgruppe, Muhr



on extremely steep grass-covered slopes, still few releases, but then medium-to-large, below 2400m



melt-freeze crust turns to firn depending on aspect/altitude, thereafter heed moistening, below 2400m

Top springtime conditions in early hours, daytime cycle below 2400m

Avalanche danger in the morning is LOW at all altitudes, then increases due to loss of snowpack firmness to MODERATE below 2400m.

On sun-drenched steep slopes from late morning, naturally triggered or skier-triggered small-to-medium wet loose-snow avalanches are possible, mostly in extremely steep terrain.

Glide-snow avalanches (medium-to-isolated-large sized) in very steep grass-covered terrain are possible at any time of day or night, though the likelihood is greatest in afternoon and in evening. Heed glide cracks.

Snowpack structure

The snowpack is capable of bearing loads to start with. During the course of the day it softens at varying speed depending on aspect and gradient, and to varying depth. On sunny slopes it becomes slushy and fracturing down to the ground is possible in places.

Weather

On Monday, unimpaired sunshine in the morning. In the afternoon, some convective cloud build-up, the peaks will remain free. Winds will be blowing at moderate strength from northerly directions. At 2000 m: 4 degrees; at 3000 m: -3 degrees.

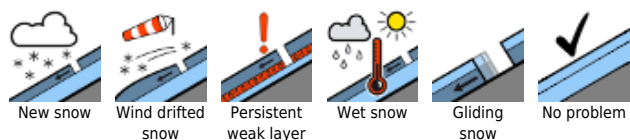
Nocturnal skies on Monday night will be clear.

On Tuesday, increasingly heavy cloud cover will move in over the summits, creating diffuse light conditions. Sunshine will be rare. It will remain dry for the most part. Winds will remain light. At 2000 m: 3 degrees; at 3000 m: -5 degrees.

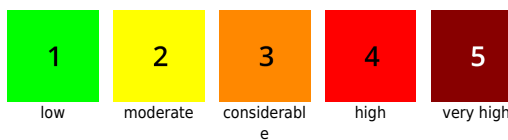
Outlook

Little change, although clouds will pass through and delay transformation to firn snow.

Avalanche problems



Danger ratings

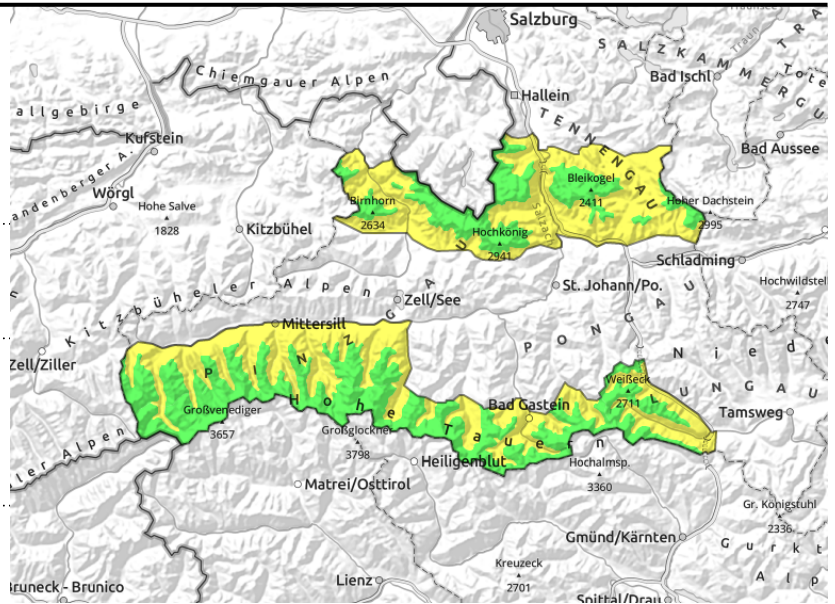


Expositions



28.03.2022, afternoon

Tennengebirge, Gosaukamm, Steinernes Meer, Hochkönig, Hagengebirge, Göllstock, Loferer und Leoganger Steinberge, Großvenedigergruppe Nord, Großvenedigergruppe Alpenhauptkamm, Glocknergruppe Nord, Glocknergruppe Alpenhauptkamm, Goldberggruppe Alpenhauptkamm, Ankogelgruppe, Muhr



on extremely steep grass-covered slopes, still few releases, but then medium-to-large, below 2400m



melt-freeze crust turns to firn depending on aspect/altitude, thereafter heed moistening, below 2400m

Top springtime conditions in early hours, daytime cycle below 2400m

Avalanche danger in the morning is LOW at all altitudes, then increases due to loss of snowpack firmness to MODERATE below 2400m.

On sun-drenched steep slopes from late morning, naturally triggered or skier-triggered small-to-medium wet loose-snow avalanches are possible, mostly in extremely steep terrain.

Glide-snow avalanches (medium-to-isolated-large sized) in very steep grass-covered terrain are possible at any time of day or night, though the likelihood is greatest in afternoon and in evening. Heed glide cracks.

Snowpack structure

The snowpack is capable of bearing loads to start with. During the course of the day it softens at varying speed depending on aspect and gradient, and to varying depth. On sunny slopes it becomes slushy and fracturing down to the ground is possible in places.

Weather

On Monday, unimpaired sunshine in the morning. In the afternoon, some convective cloud build-up, the peaks will remain free. Winds will be blowing at moderate strength from northerly directions. At 2000 m: 4 degrees; at 3000 m: -3 degrees.

Nocturnal skies on Monday night will be clear.

On Tuesday, increasingly heavy cloud cover will move in over the summits, creating diffuse light conditions. Sunshine will be rare. It will remain dry for the most part. Winds will remain light. At 2000 m: 3 degrees; at 3000 m: -5 degrees.

Outlook

Little change, although clouds will pass through and delay transformation to firn snow.

Translated by Jeffrey McCabe, www.creativtrans.com

Avalanche problems



Danger ratings



Expositions

