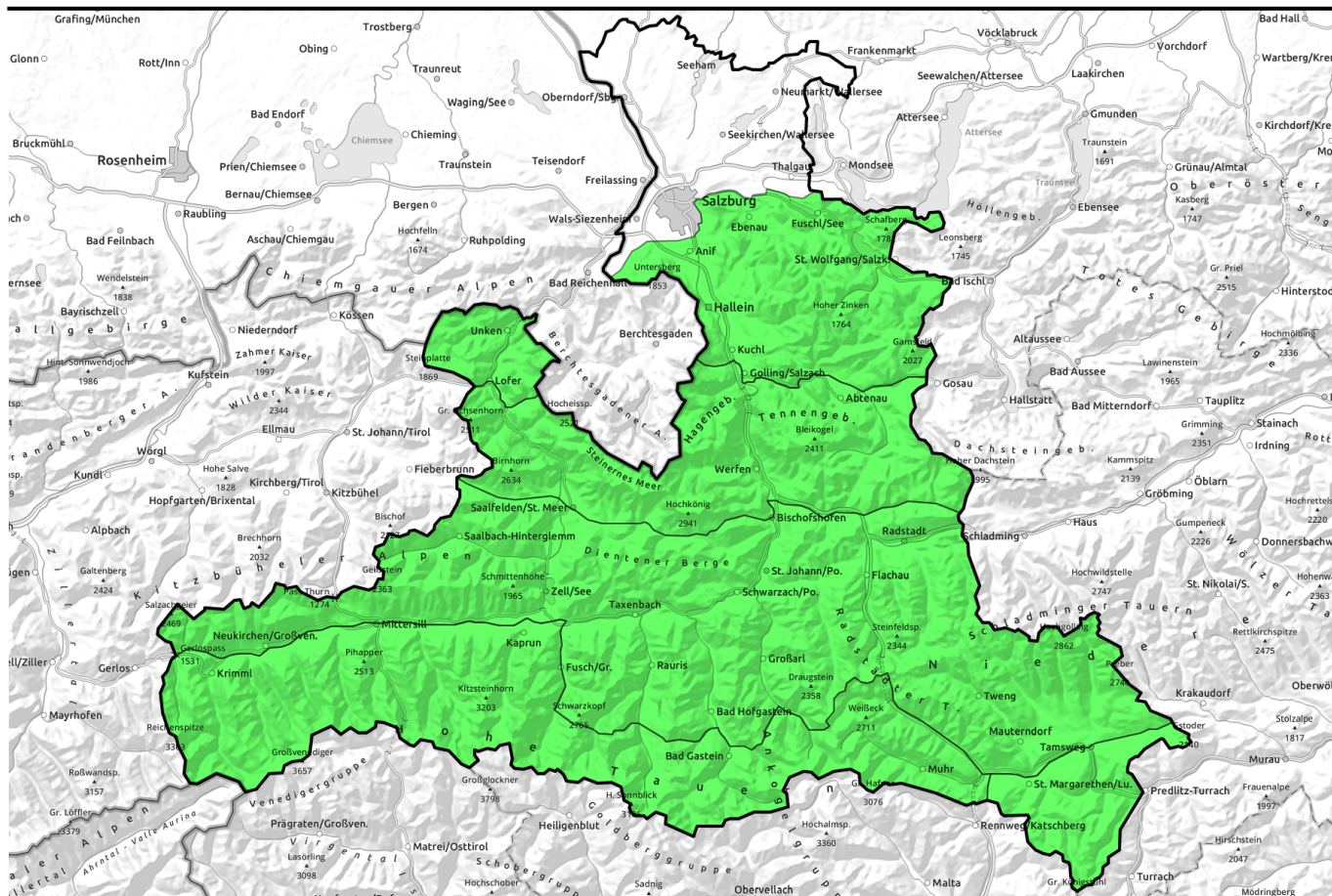


# 27.03.2022, morning



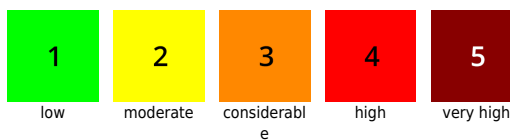
## Springtime conditions, daytime danger cycle rising to MODERATE

- Nockberge, Untersbergstock, Osterhorngruppe, Gamsfeldgruppe, Chiemgauer Alpen, Heutal, Reiteralpe
- Kitzbüheler Alpen, Glemmtal, Oberpinzgauer Grasberge, Dientner Grasberge, Pongauer Grasberge, Niedere Tauern Nord, Niedere Tauern Alpenhauptkamm, Goldberggruppe Nord, Niedere Tauern Süd
- Tennengebirge, Gosaukamm, Steinernes Meer, Hochkönig, Hagengebirge, Göllstock, Loferer und Leoganger Steinberge, Großvenedigergruppe Nord, Großvenedigergruppe Alpenhauptkamm, Glocknergruppe Nord, Glocknergruppe Alpenhauptkamm, Goldberggruppe Alpenhauptkamm, Ankogelgruppe, Muhr

### Avalanche problems



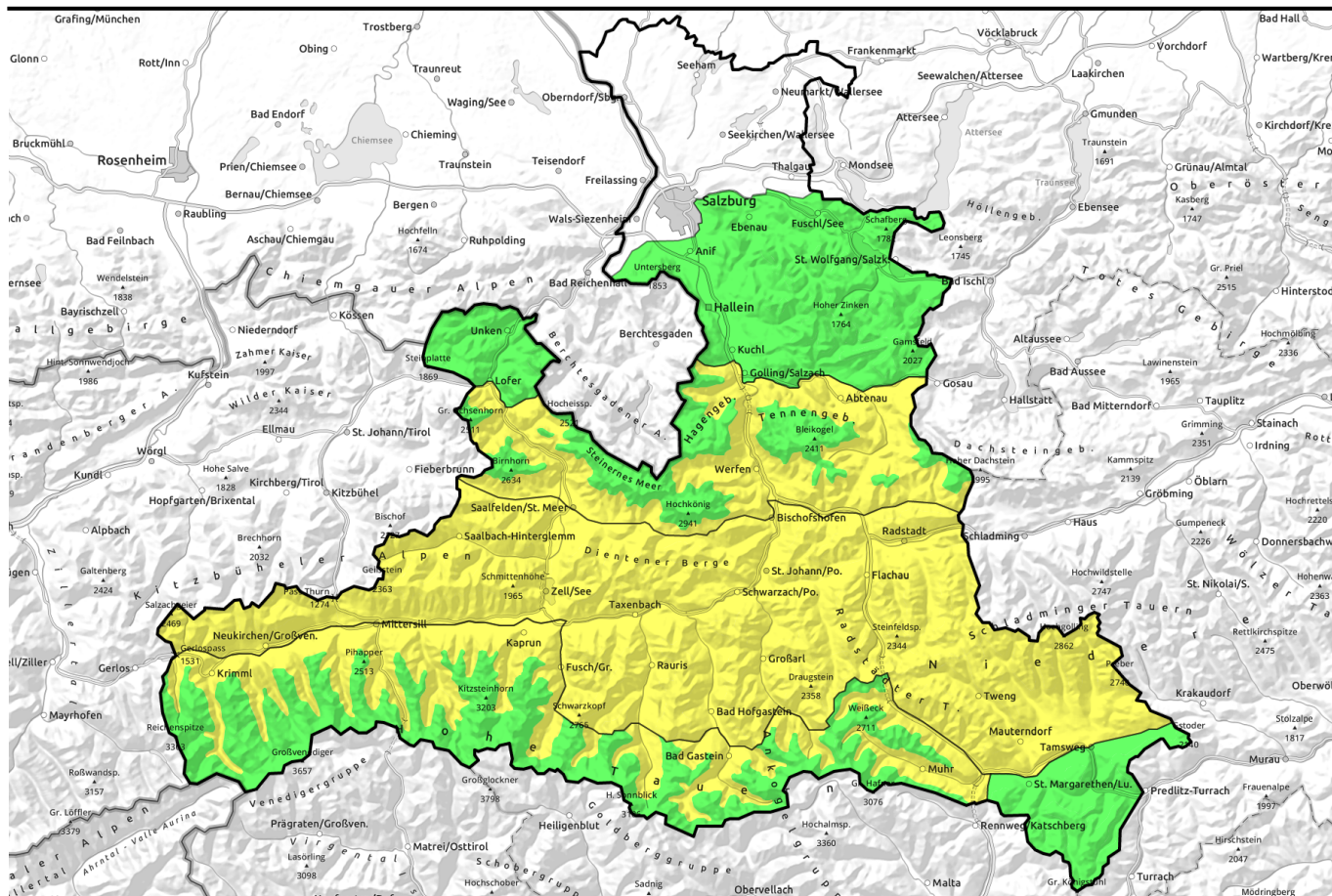
### Danger ratings



### Expositions



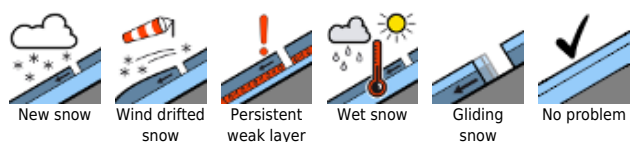
# 27.03.2022, afternoon



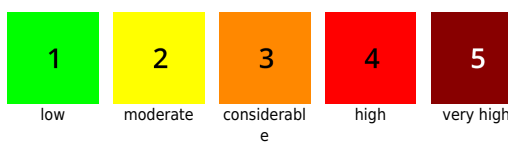
## Frühlingsverhältnisse, Tagesgang auf MÄßIG

	<p>Nockberge, Untersbergstock, Osterhorngruppe, Gamsfeldgruppe, Chiemgauer Alpen, Heutal, Reiteralpe</p>	
	<p>Kitzbüheler Alpen, Glemmtal, Oberpinzgauer Grasberge, Dientner Grasberge, Pongauer Grasberge, Niedere Tauern Nord, Niedere Tauern Alpenhauptkamm, Goldberggruppe Nord, Niedere Tauern Süd</p>	
 2400 m	<p>Tennengebirge, Gosaukamm, Steinernes Meer, Hochkönig, Hagengebirge, Göllstock, Loferer und Leoganger Steinberge, Großvenedigergruppe Nord, Großvenedigergruppe Alpenhauptkamm, Glocknergruppe Nord, Glocknergruppe Alpenhauptkamm, Goldberggruppe Alpenhauptkamm, Ankogelgruppe, Muhr</p>	

### Avalanche problems



### Danger ratings

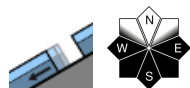


### Expositions

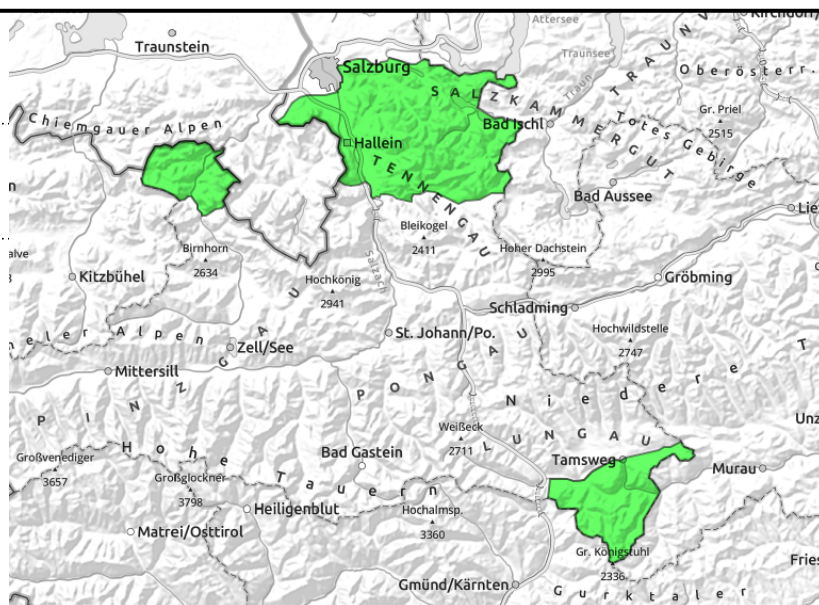


**27.03.2022**

**Nockberge, Untersbergstock, Osterhorngruppe, Gamsfeldgruppe, Chiemgauer Alpen, Heutal, Reiteralpe**



on extremely steep grass-covered slopes, still very few, small-to-medium, below average snow depths



## Snow currently softens also on north-facing slopes

Avalanche danger is initially LOW, then rises during the day yet stays in this danger level. Isolated, seldom glide snow avalanches (small-to-medium) are possible at any time of day or night in very steep grass-covered terrain, though the likelihood is greatest in afternoon and evening. Heed glide cracks.

### Snowpack structure

Initially a hardened melt-freeze crust dominates, often hard-as-steel and icy. During the course of the day it softens at varying speed depending on aspect and gradient, and to varying depth. On sunny slopes it becomes slushy and fracturing down to the ground is possible in places.

### Weather

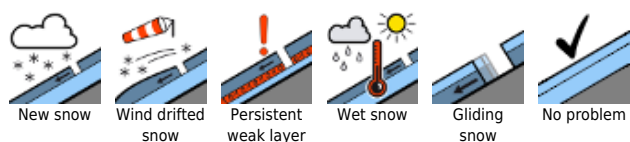
On Sunday, sunshine from morning till evening, good visibility, hardly any clouds in the afternoon, partly moderate strength northerly winds. At 2000 m: 4 degrees.

On Monday, unimpaired sunshine in the morning, some convective cloud build-up in the afternoon (peaks will remain free). Winds at moderate strength from the north. At 2000 m: 4 degrees.

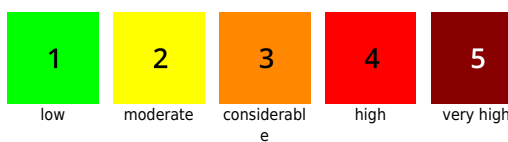
### Outlook

Little change

#### Avalanche problems



#### Danger ratings

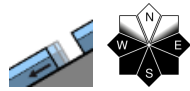
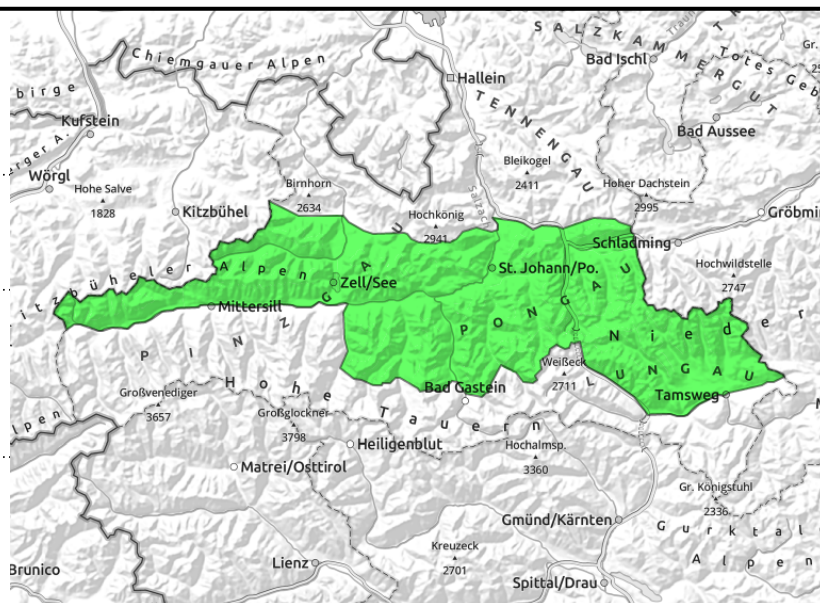


#### Expositions



# 27.03.2022, morning

**Kitzbüheler Alpen, Glemmtal, Oberpinzgauer Grasberge, Dientner Grasberge, Pongauer Grasberge, Niedere Tauern Nord, Niedere Tauern Alpenhauptkamm, Goldberggruppe Nord, Niedere Tauern Süd**



on extremely steep grass-covered slopes, still few releases but they can grow large in isolated cases



melt-freeze crust turns varyingly quickly to firm depending on aspect/altitude, thereafter heed moistening

## Top springtime conditions in early hours, thereafter heed daytime cycle

Avalanche danger in the morning is LOW at all altitudes, then increases due to loss of snowpack firmness to MODERATE.

On sun-drenched steep slopes from late morning, naturally triggered or skier-triggered small-to-medium wet loose-snow avalanches are possible, mostly in extremely steep terrain.

Glide-snow avalanches (medium-to-isolated-large sized) in very steep grass-covered terrain are possible at any time of day or night, though the likelihood is greatest in afternoon and in evening. Heed glide cracks.

### Snowpack structure

The snowpack is capable of bearing loads to start with. During the course of the day it softens at varying speed depending on aspect and gradient, and to varying depth. On sunny slopes it becomes slushy and fracturing down to the ground is possible in places.

### Weather

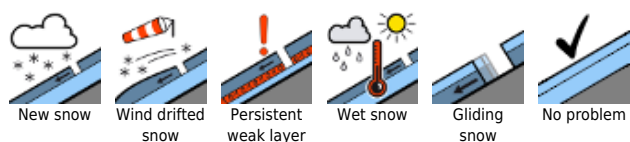
On Sunday, sunshine from morning till evening, good visibility, hardly any clouds in the afternoon, partly moderate strength northerly winds. At 2000 m: 4 degrees; at 3000 m: -3 degrees.

On Monday, unimpaired sunshine in the morning, some convective cloud build-up in the afternoon (peaks will remain free). Winds at moderate strength from the north. At 2000 m: 4 degrees; at 3000 m: -3 degrees.

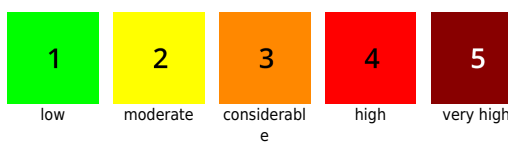
### Outlook

Little change

#### Avalanche problems



#### Danger ratings

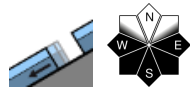
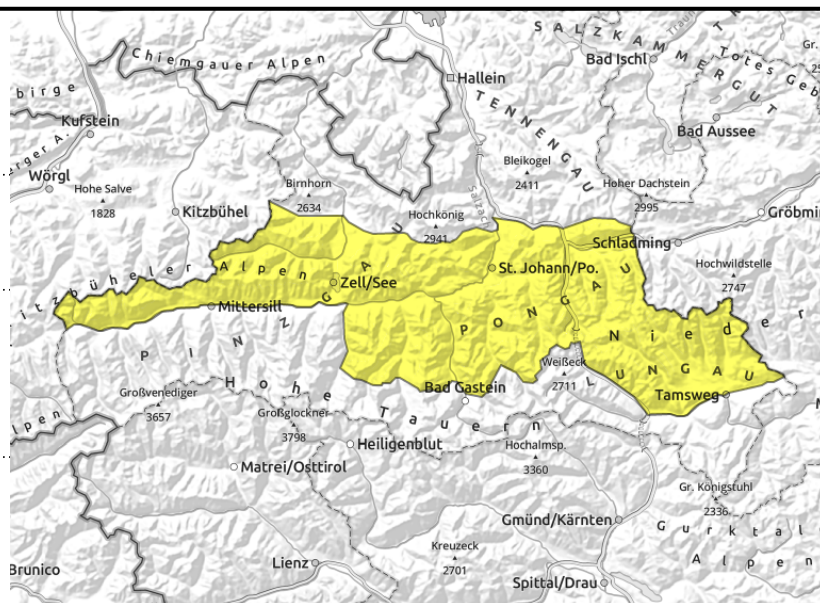


#### Expositions



# 27.03.2022, afternoon

**Kitzbüheler Alpen, Glemmtal, Oberpinzgauer Grasberge, Dientner Grasberge, Pongauer Grasberge, Niedere Tauern Nord, Niedere Tauern Alpenhauptkamm, Goldberggruppe Nord, Niedere Tauern Süd**



on extremely steep grass-covered slopes, still few releases but they can grow large in isolated cases



melt-freeze crust turns varyingly quickly to firm depending on aspect/altitude, thereafter heed moistening

## Top springtime conditions in early hours, thereafter heed daytime cycle

Avalanche danger in the morning is LOW at all altitudes, then increases due to loss of snowpack firmness to MODERATE.

On sun-drenched steep slopes from late morning, naturally triggered or skier-triggered small-to-medium wet loose-snow avalanches are possible, mostly in extremely steep terrain.

Glide-snow avalanches (medium-to-isolated-large sized) in very steep grass-covered terrain are possible at any time of day or night, though the likelihood is greatest in afternoon and in evening. Heed glide cracks.

### Snowpack structure

The snowpack is capable of bearing loads to start with. During the course of the day it softens at varying speed depending on aspect and gradient, and to varying depth. On sunny slopes it becomes slushy and fracturing down to the ground is possible in places.

### Weather

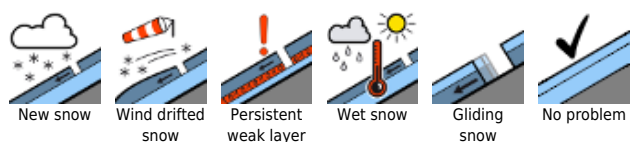
On Sunday, sunshine from morning till evening, good visibility, hardly any clouds in the afternoon, partly moderate strength northerly winds. At 2000 m: 4 degrees; at 3000 m: -3 degrees.

On Monday, unimpaired sunshine in the morning, some convective cloud build-up in the afternoon (peaks will remain free). Winds at moderate strength from the north. At 2000 m: 4 degrees; at 3000 m: -3 degrees.

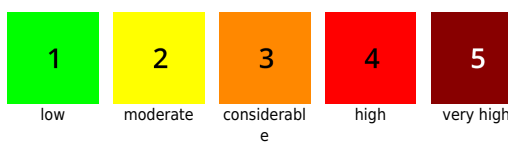
### Outlook

Little change

#### Avalanche problems



#### Danger ratings

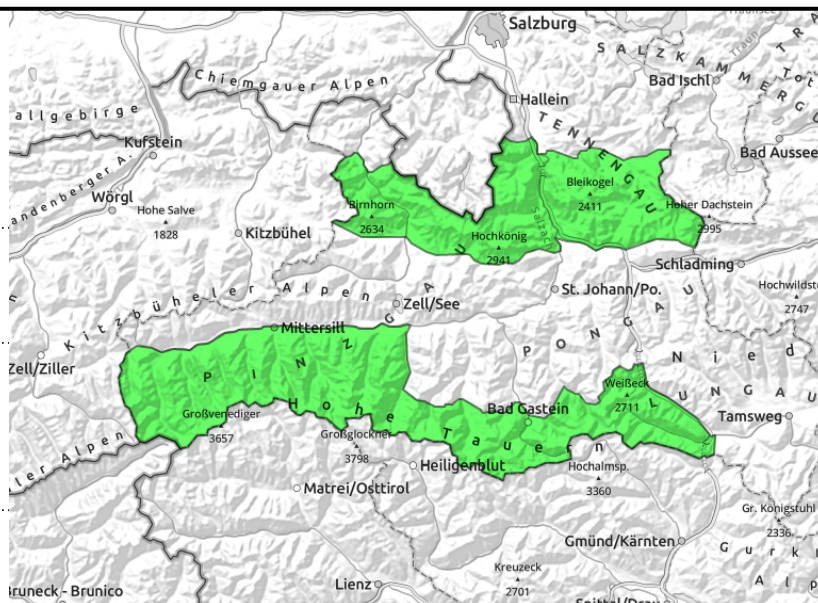


#### Expositions



# 27.03.2022, morning

Tennengebirge, Gosaukamm, Steinernes Meer, Hochkönig, Hagengebirge, Göllstock, Loferer und Leoganger Steinberge, Großvenedigergruppe Nord, Großvenedigergruppe Alpenhauptkamm, Glocknergruppe Nord, Glocknergruppe Alpenhauptkamm, Goldberggruppe Alpenhauptkamm, Ankogelgruppe, Muhr



on extremely steep grass-covered slopes, still few releases, but then medium-to-large, below 2400m



melt-freeze crust turns to firn depending on aspect/altitude, thereafter heed moistening, below 2400m

## Top springtime conditions in early hours, daytime cycle below 2400m

Avalanche danger in the morning is LOW at all altitudes, then increases due to loss of snowpack firmness to MODERATE below 2400m.

On sun-drenched steep slopes from late morning, naturally triggered or skier-triggered small-to-medium wet loose-snow avalanches are possible, mostly in extremely steep terrain.

Glide-snow avalanches (medium-to-isolated-large sized) in very steep grass-covered terrain are possible at any time of day or night, though the likelihood is greatest in afternoon and in evening. Heed glide cracks.

### Snowpack structure

The snowpack is capable of bearing loads to start with. During the course of the day it softens at varying speed depending on aspect and gradient, and to varying depth. On sunny slopes it becomes slushy and fracturing down to the ground is possible in places.

### Weather

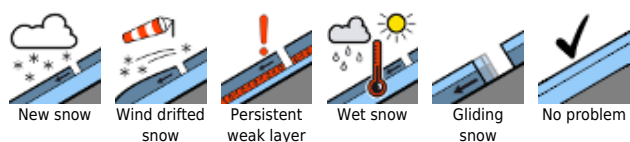
On Sunday, sunshine from morning till evening, good visibility, hardly any clouds in the afternoon, partly moderate strength northerly winds. At 2000 m: 4 degrees; at 3000 m: -3 degrees.

On Monday, unimpaired sunshine in the morning, some convective cloud build-up in the afternoon (peaks will remain free). Winds at moderate strength from the north. At 2000 m: 4 degrees; at 3000 m: -3 degrees.

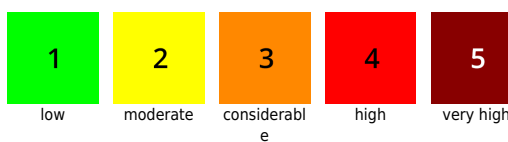
### Outlook

Little change

#### Avalanche problems



#### Danger ratings

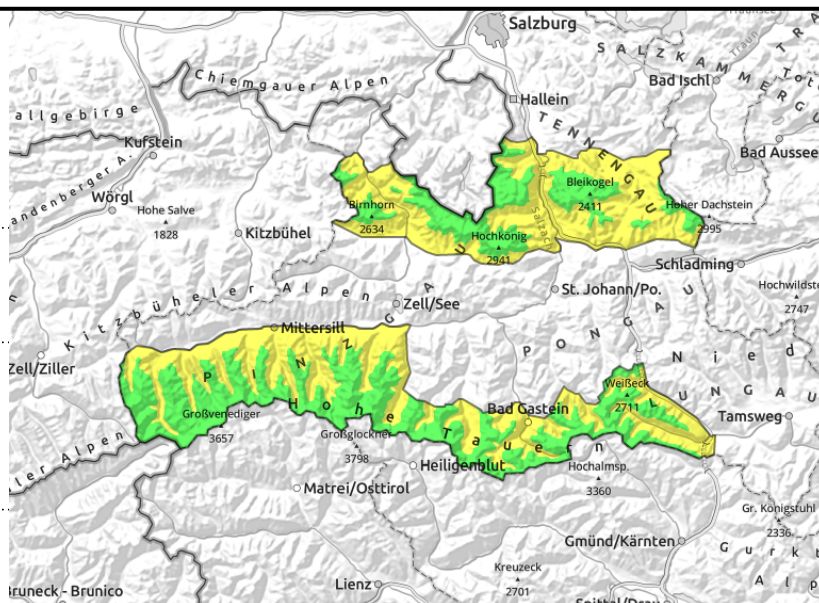


#### Expositions



# 27.03.2022, afternoon

Tennengebirge, Gosaukamm, Steinernes Meer, Hochkönig, Hagengebirge, Göllstock, Loferer und Leoganger Steinberge, Großvenedigergruppe Nord, Großvenedigergruppe Alpenhauptkamm, Glocknergruppe Nord, Glocknergruppe Alpenhauptkamm, Goldberggruppe Alpenhauptkamm, Ankogelgruppe, Muhr



2400 m



on extremely steep grass-covered slopes, still few releases, but then medium-to-large, below 2400m



melt-freeze crust turns to firn depending on aspect/altitude, thereafter heed moistening, below 2400m

## Top springtime conditions in early hours, daytime cycle below 2400m

Avalanche danger in the morning is LOW at all altitudes, then increases due to loss of snowpack firmness to MODERATE below 2400m.

On sun-drenched steep slopes from late morning, naturally triggered or skier-triggered small-to-medium wet loose-snow avalanches are possible, mostly in extremely steep terrain.

Glide-snow avalanches (medium-to-isolated-large sized) in very steep grass-covered terrain are possible at any time of day or night, though the likelihood is greatest in afternoon and in evening. Heed glide cracks.

### Snowpack structure

The snowpack is capable of bearing loads to start with. During the course of the day it softens at varying speed depending on aspect and gradient, and to varying depth. On sunny slopes it becomes slushy and fracturing down to the ground is possible in places.

### Weather

On Sunday, sunshine from morning till evening, good visibility, hardly any clouds in the afternoon, partly moderate strength northerly winds. At 2000 m: 4 degrees; at 3000 m: -3 degrees.

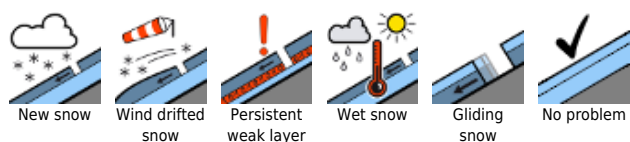
On Monday, unimpaired sunshine in the morning, some convective cloud build-up in the afternoon (peaks will remain free). Winds at moderate strength from the north. At 2000 m: 4 degrees; at 3000 m: -3 degrees.

### Outlook

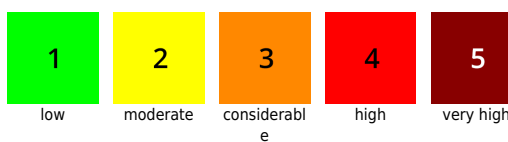
Little change

Translated by Jeffrey McCabe, [www.creativtrans.com](http://www.creativtrans.com)

#### Avalanche problems



#### Danger ratings



#### Expositions

